



# User Guide

Smart Home Bridge

**eHub**

Website: [www.linknlink.com](http://www.linknlink.com)

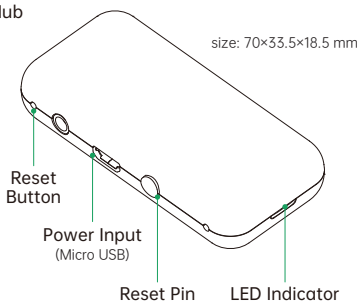
Support: [support@linklink-iot.com](mailto:support@linklink-iot.com)

# 1 OVERVIEW

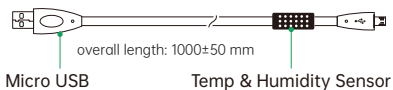
## What's Include

eHub×1, USB cable with sensor×1, Reset pin×1  
Double side tape×1, User guide×1.

eHub



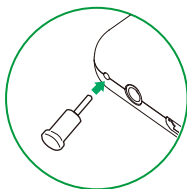
USB Cable With Sensor



Status	Indication
Flashes intermittently	Device is in setup mode and waiting to be added
Flashes slowly then off	Device is being set up and added to network
Flashes slowly continuously	Device is failed to connect to network or disconnected from network
Flash once	IR or RF signal is sent

### • Reset for Setup

When the device is not in setup mode, take out the reset pin and use it to press and hold the Reset Button for 5s until the LED indicator flashes intermittently.



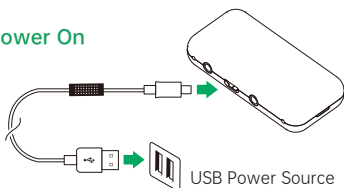
## 2 INSTALLATION STEPS

### STEP 1 Requirements

#### Wi-Fi Router with Internet Access



#### Power On



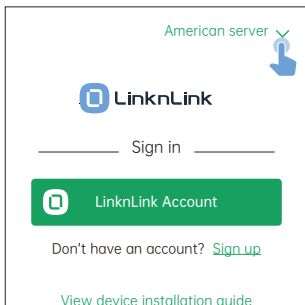
- A smartphone or tablet running iOS 9.0 / Android 5.1 or above.
- A 2.4GHz Wi-Fi network with Internet access.
- Make sure the device is on and the blue LED indicator is flashing intermittently.

### STEP 2 Get the App



- Connect your smartphone to your home Wi-Fi network (2.4GHz only).
- Open your phone's camera, point it at the QR code, download the latest "LinknLink" APP from the App Store or Google Play, and install it on your smart phone.

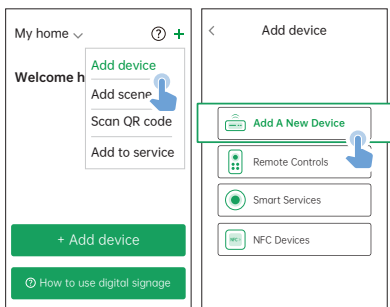
### 3 LOG IN TO THE APP



- Open the LinknLink APP, click on the server selection in the top right corner, then
- click on "LinknLink Account" and log into your cloud account.
- If you don't have an account, click "Sign up" to create a new one.

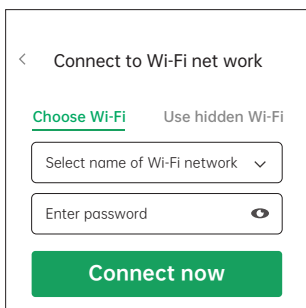
## 4 ADD DEVICE

### STEP 1 Add eHub



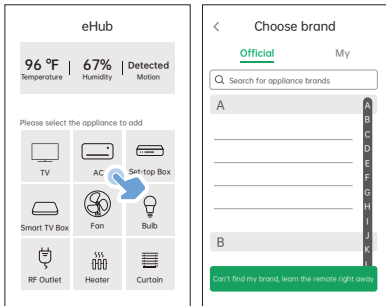
- Power on the eHub, **making sure the indicator light is Flashing intermittently in blue.**
- Turn on your phone's Bluetooth service, click on the "+" in the top right corner -
- "Add device" - "Add a new device" - "eHub series device" - "eHub".
- The APP will start to automatically scan for nearby eHub devices, which may take up to 10 seconds.

### Connect eHub to Wi-Fi



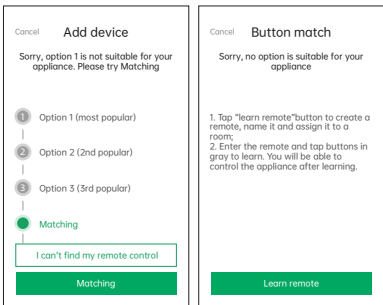
- Select your home Wi-Fi network, enter the password and click "Connect now", the LED indicator will **flash slower and then turn off.**
- Device is successfully connected.
- Choose a room and name the device.

## STEP 2 Add Infrared Remote



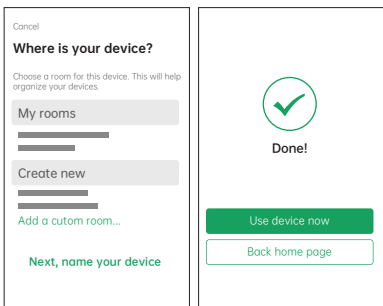
- Click on the "+" in the top right corner, select "Add device", select "Remote controls", select the eHub you want to use. Select a category (ex. TV).
- Choose a brand and find the best infrared code from our recommended options.
- If no usable infrared code is matched, proceed to the next step.
- If you can't find your brand, click on "Can't find my brand, learn the remote right away" at the bottom and proceed to the next page.

## If No Infrared Code is Matched



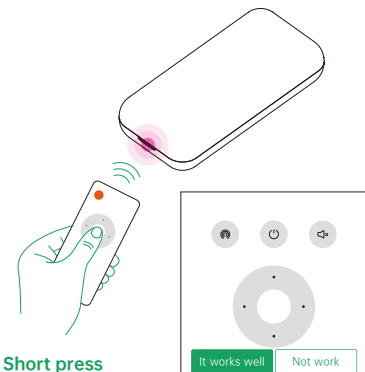
- If you found the brand but no usable infrared code was matched, you have two options:
- Click " Matching" and follow the guide to try other options that may suit your model.
- Click "I Can't find my remote control" → "Learn remote control now" to skip retry and proceed to the next page.

## Learn Infrared Code Manually



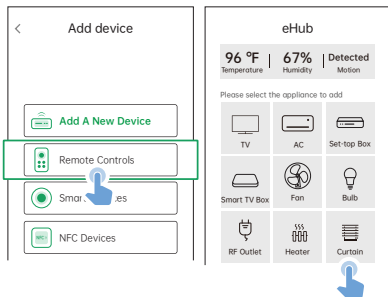
- Firstly, create a remote control, choose a room for this device and name it.
- Click "Use device now" to go to the remote control panel page, then click a grey button you want to learn.
- Follow the guide to learn the button, then test and save.
- Repeat until all required buttons are learned.

## Tips to Learn Infrared Code



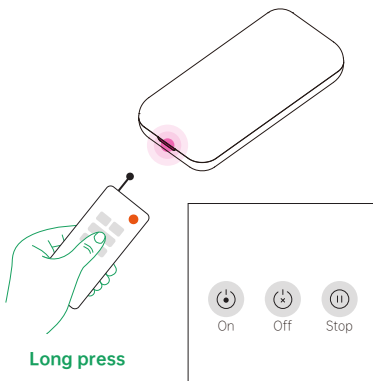
- Aim your physical remote control at eHub, wait for the eHub LED red indicator to light up, then briefly press the button you want to learn on the remote control.
- If a button doesn't work properly, click the "..." in the top right corner and select "Relearn button".

### STEP 3 Add 433MHz RF Remote



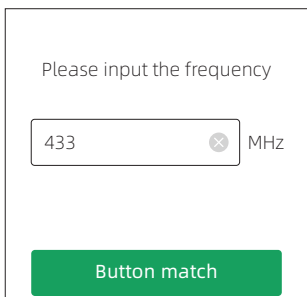
- Click on the "+" in the top right corner, select "Add device", select "Remote control", select the eHub you want to use.
- Choose a category (for example, Curtain) and a brand.
- Ensure that the RF receiving device you want to control is in pairing mode, follow the guide to code pair.
- If you can't find your brand, choose to learn the remote control and proceed to the next step.

### Learn RF Code Manually



- Firstly, create a remote control, choose a room for this device and name it.
- Click "Use device now" to go to the remote control panel page, then click a grey button to learn.
- If you have a physical remote control, keep it close to eHub and follow the guide to learn the button, then test and save.
- If you don't have a physical remote control, proceed to the next step.

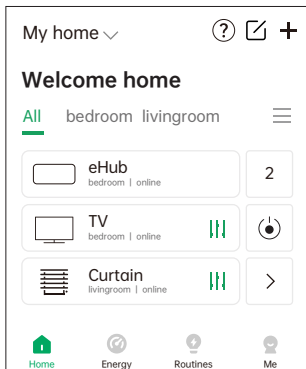
### If No Physical Remote Control



- If you can't find the physical remote control, enter the correct RF frequency of the controlled RF receiving device, make sure the device is in pairing mode, press the "on" button in the App to complete learning, then test and save.
- If button learning fails, repeat the learning process until all required buttons are learned.

**Note** RF learning can sometimes be interfered with by external signals, so you may need to repeat the learning several times to successfully control the device.

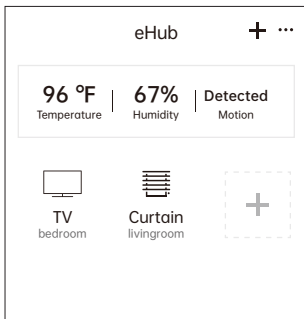
## 5 USE eHub REMOTE CONTROL



- The remote controls that have been added will be listed on the LinknLink App homepage, click to enter the remote control interface.
- Whether the phone uses 4G/5G, or Wi-Fi connection, it can remote control devices at home.

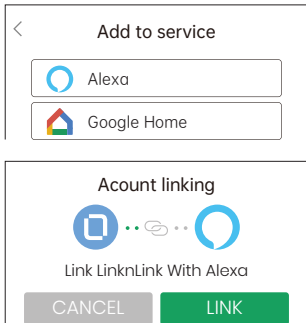


## 6 USE eHub SENSORS



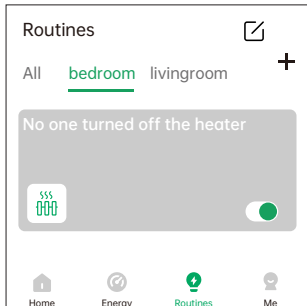
- eHub comes with human radar induction sensor and temperature and humidity sensor.
- In the LinknLink App, click on the eHub device, the real-time status of the three sensors is displayed at the top of the page.
- Click on the sensor to view historical data.
- For Android/ iOS widgets, on the phone, firstly find and select the LinknLink App widget. Then, from the device card, select the type you want, such as temperature, humidity, or human induction. After adding the widget to the phone's home screen, long press on it to configure.

## 7 USE ALEXA / GOOGLE HOME



- If you're already logged into the Alexa or Google Home APP, you can now directly link to the LinknLink skill.
- On the App homepage, click on the "+" in the top right corner and select "Add Voice Assistant". Select "Alexa" or "Google Home", then click "Link Now".
- You will be redirected to the Alexa / Google Home APP and click "Link" to complete this process.
- After successfully discovering the device, you will be able to control the device through the Alexa / Google Home APP or speaker.

## 8 HOME AUTOMATION



- Use the "Routines" in LinknLink App, the sensors in eHub can be used as trigger conditions, and the remote control can be used as execution device. Ex. turn off the heater when the room is continuously unoccupied.
- Similarly, use the "Routine" in Alexa / Google Home to set up the automation you need.



## **LinknLink Pty Ltd**

Manufacturer: Hangzhou LinknLink Technology Co., Ltd.

Website: [www.linknlink.com](http://www.linknlink.com)

Service & Support: [support@linklink-iot.com](mailto:support@linklink-iot.com)

Address: Room 2502, Building A, 57 Jiang' er Road,  
Binjiang, Hangzhou, 310052, P.R. China