



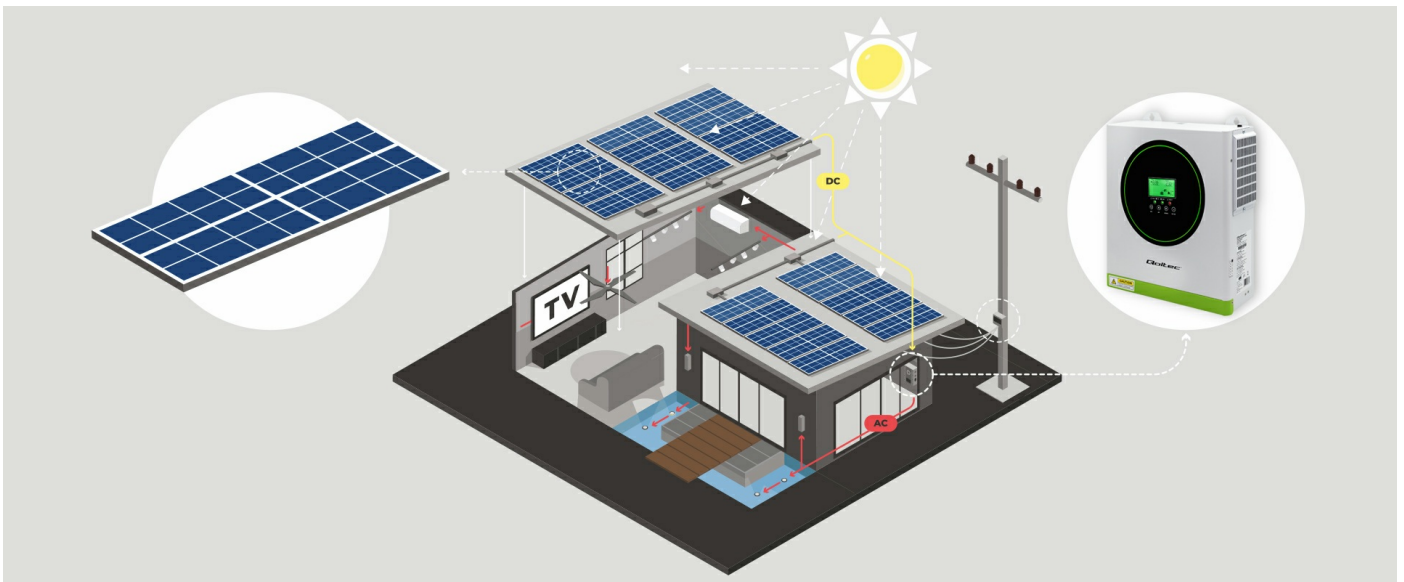
## Qoltec Hybrid Solar Inverter Off-Grid 3500W | 100A | 24V | MPPT | Sinus | Wi-Fi optional | Power factor 1.0

Product code: 53864

The off-grid hybrid inverter converts the energy created by PV modules into energy needed to power electrical appliances. Equipped with a multi-function LCD display, it records operating data allowing continuous monitoring and management of the entire system. It operates in off-grid mode. Allows power to be supplied directly from solar panels or other energy sources, without the need for a backup battery. Has a built-in 100A MPPT charge controller and 60A AC charger. Surge power 7000W. Compatible with LiFePO4, AGM, GEL and DEEP Cycle batteries.

Possibility to connect a compatible wi-fi module: product code [53963](#)

### BE ENERGY INDEPENDENT



How does the hybrid inverter work in off-grid mode ?

The performance of a photovoltaic system depends on the selection of the right inverter, or solar inverter. The inverter performs a key function in this system, **converting the DC current generated by the photovoltaic panels into AC current used by household appliances.** The off-grid hybrid inverter **connects the photovoltaic system, energy storage and the grid.**

It uses excess solar energy to power consumers and charge the battery. When energy production is greater than current demand, **the excess current can be transferred to charge AGM, GEL or energy storage batteries, allowing energy to be stored for later use, such as at night or on cloudy days** . The hybrid inverter **can automatically switch to off-grid mode, supplying energy from the batteries.**

## WHY SHOULD YOU CHOOSE A HYBRID INVERTER ?



Advanced energy management functions: MPPT charge controller

- Inverter with **pure sine wave** inverter type,
- **automatic restart during AC power restoration**,
- **readable multifunctional touchscreen LCD display**,
- **100A MPPT charge controller**,
- option of mains or generator power supply,
- ability to change AC/Solar charger priority settings via LCD display,
- **intelligent charger design for optimum battery performance**
- configurable input voltage range for home appliances and PCs via settings on the LCD display panel,
- configurable battery charging current depending on appliances and PCs via settings on the LCD display,
- **cold start function**,
- reserved communication port for RJ45, RS232

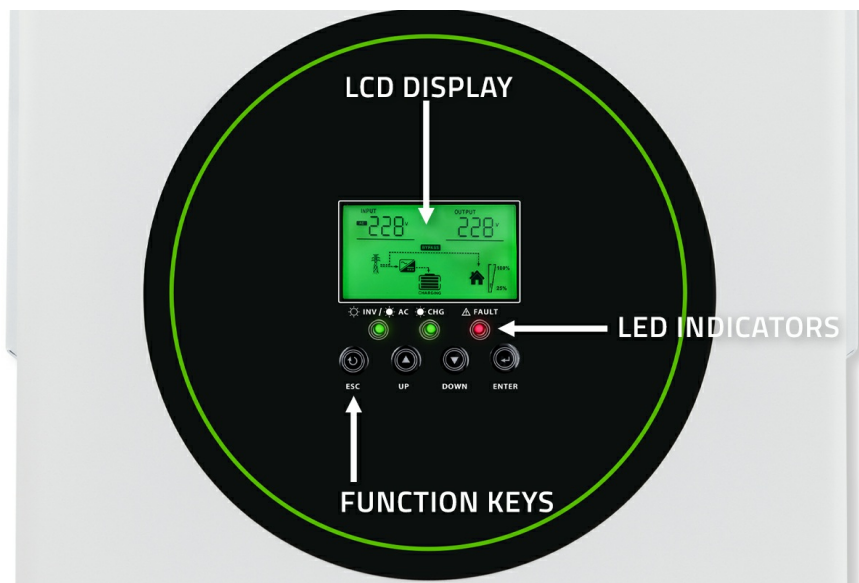
## MAXIMIZE THE POSSIBILITIES WITH MPPT TECHNOLOGY



Increase in electricity production with a significant decrease in operating costs

The battery charging inverter uses a state-of-the-art 100A MPPT charge controller to maximize the power drawn from the photovoltaic panels, using advanced maximum power point tracking technology. Having this feature significantly affects the efficiency of the photovoltaic installation—they can maintain high power even in low sunlight conditions. In addition, the controller controls the battery operation and charging process and protects the battery from damage.

## MULTIFUNCTIONAL TOUCH-SCREEN LCD DISPLAY



Continuous monitoring of battery performance

The product is equipped with a multifunctional, easy-to-use LCD display with control panel. Facilitates monitoring of the entire photovoltaic installation. Allows you to configure the input voltage range for home appliances and personal computers or change the priority settings of the AC/Solar charger. In addition, the display records data and informs about failures, reacting accordingly if any of the parameters exceed the norm. If a fault occurs, the inverter shuts down.

## CONFIDENCE CONFIRMED BY A WARRANTY

Product with 24 months guarantee

Our company is committed to providing technical support and customer service, making our guarantee a comprehensive commitment to customer satisfaction for two years from the date of purchase. The accompanying protocol is an integral part of the guarantee and is necessary to make a claim for faulty goods within 24 months of purchase.

## TECHNICAL DATA

Producer	Qoltec
Type	Off-Grid
Phase	Single phase

Rated Power	3500VA/ 3500W
Surge power	7000VA
Input parameters	
Nominal Input voltage	220/230VAC
Input Voltage Range	170-280VAC; 90-280VAC
Working frequency	50/60 HZ (auto detection)
Output parameters	
Efficiency	94%
Transfer time	10 ms (PC) 20 ms (home appliances)
Waveform	Pure sine wave
BATTERY PARAMETERS	
Type of charging	MPPT
Battery voltage	24V
Charge Current (AC)	60A
Variable charging voltage	27VDC
Battery overcharge protection	28.2VDC
Maximum battery charging current from PV	100A
Work without battery	No
PV PARAMETERS	
Maximum PV array open circuit power	4000W
Maximum solar charge current	100A
MPPT STARTING VOLTAGE	45VDC
MPPT operating voltage range	45 ~ 500VDC
Maximum PV array open circuit voltage	500VDC
OTHER PARAMETERS	
Screen	LCD
Interface	RS-232, RS485
Cooling system	2 x fan
Protection	Anti-short-circuit Against overheating Against overload Against overload
Colour	White, green
Additional information	Support LiFePO4, AGM, GEL, Deep cycle batteries
Notices	We require the device to be installed by a qualified installer with the appropriate authorization. In case of installation by unauthorized persons, the warranty will automatically expire. The included protocol is an integral part of the warranty and is necessary to file a claim for defective goods within 24 months from the date of purchase.
Working temperature	-10°C ~ +50°C
Storage temperature	-15°C do +60°C
Size	330 x 278 x 98 mm
Package contents	1 x Solar inverter 1 x User manual 1 x Device installation protocol
Package depth / length [mm]	402
Package height [mm]	368
Package width [mm]	174
Net weight [kg]	4.35

Gross weight [kg]	5.05
Certificate	CE
Warranty	24 month
EAN code	5901878538648