

---

# Product datasheet

## L 36 W/76

**OSRAM NATURA T8 | Tubular fluorescent lamps 26 mm, with G13 bases, for food presentation**



- Bakeries, meat processors, butchers Shops Supermarkets and department stores Especially suitable for the food sector (DIN 10504)

- Specially tailored spectral distribution Food looks fresh and appetizing without unduly beautifying it



Technical data

Electrical data

Nominal voltage	103 V
Nominal wattage	38.10 W
Rated lamp efficacy (HF data 25 °C)	Under clarification by authority and standardization body
Rated wattage	38.10 W
Lamp current	0.43 A
Nominal current	0.43 A

Photometrical data

Rated luminous flux	1800 lm
Luminous flux at	1800 lm
Light color	76
Nominal luminous flux	1800 lm
Light color (designation)	NATURA
Color temperature	3500 K
Luminous flux	1800 lm

Dimensions & weight



Tube diameter	26 mm
Length	1214 mm
Length with base excl. base pins/connection	1200.00 mm
Diameter	26.0 mm
Product weight	165.00 g
Outer bulb	T26

Lifespan

Product datasheet

Service life	13000 h <sup>1)</sup>
Lifespan	20000 h <sup>1)</sup>
Rated lamp life time	20000 h

<sup>1)</sup> With preheat ECG

Additional product data

Base (standard designation)	G13
Mercury content	5.3 mg
Appropriate disposal acc. to WEEE	Yes

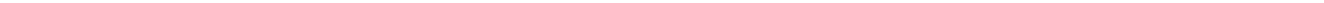
Certificates & standards

Energy consumption	39 kWh/1000h
--------------------	--------------

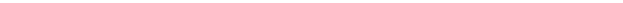
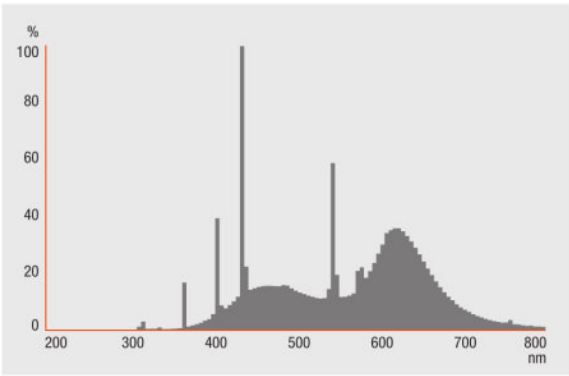
Country specific categorizations

Order reference	L 36W/76
-----------------	----------

Light Distribution

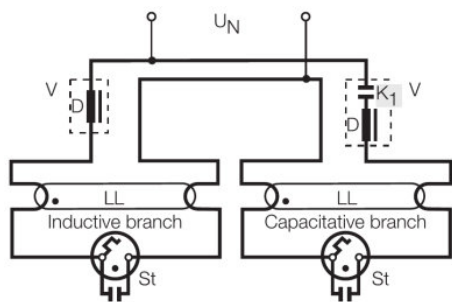


—



FL\_76\_Natura

Product datasheet



DUO CIRCUIT

Logistical Data

Product code	Product description	Packaging unit (Pieces/Unit)	Dimensions (length x width x height)	Volume	Gross weight
4050300010526	L 36 W/76	Shipping carton box 25 Pieces Sleeves	142 mm x 145 mm x 1242 mm	25.57 dm <sup>3</sup>	5062.00 g

The mentioned product code describes the smallest quantity unit which can be ordered. One shipping unit can contain one or more single products. When placing an order, for the quantity please enter single or multiples of a shipping unit.

References / Links

For more information on QUICKTRONIC electronic control gear go to  
► [www.osram.com/QUICKTRONIC](http://www.osram.com/QUICKTRONIC)

Disclaimer

Subject to change without notice. Errors and omission excepted. Always make sure to use the most recent release.

OSRAM is distribution partner  
of LEDVANCE of LAMPS

**OSRAM**

OSRAM GmbH  
Marcel-Breuer-Strasse 6  
80807 Munich, Germany