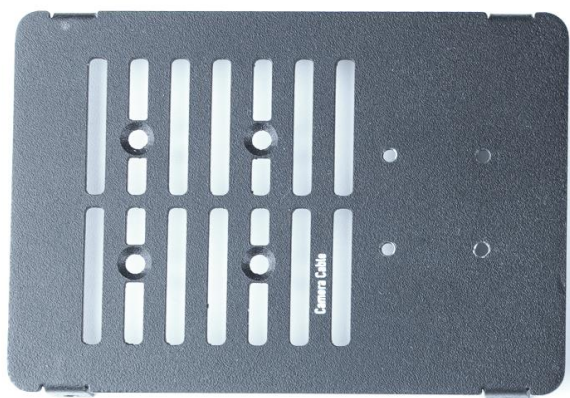


# Assembly instruction

## OKdo Raspberry Pi 4 Steel Case



Included in the product



## 1. Mount the rubber feet



## 2. Mount the lock bracket



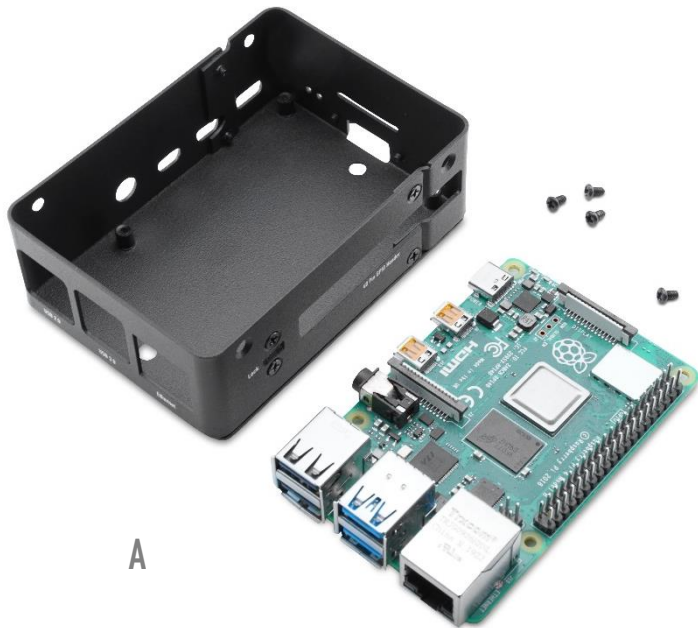
A



B

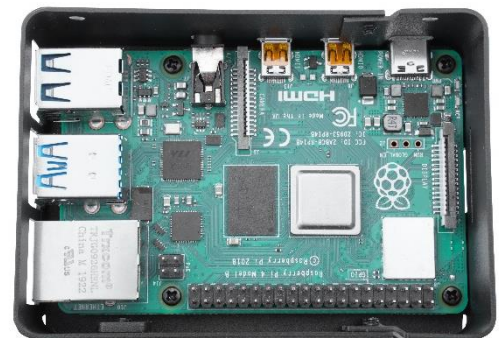
### 3. Mount the board into the case

Always make sure the Micro SD is not installed before put the Raspberry Pi board into the case!



A

B



C

### 4. Install and secure Micro SD

Always make sure the Micro SD is not installed before take out the Raspberry Pi board from the case!



A

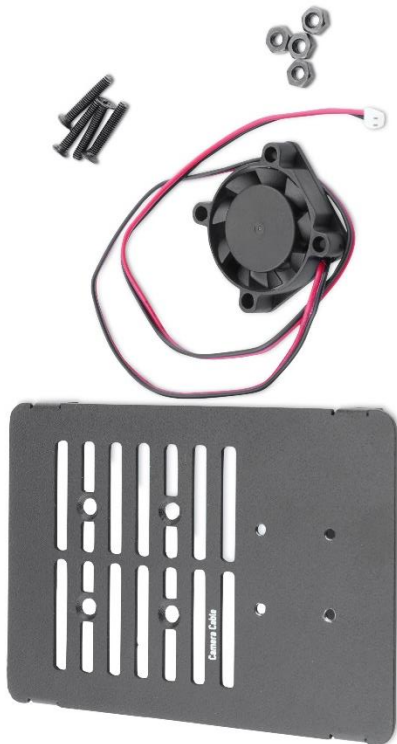


B

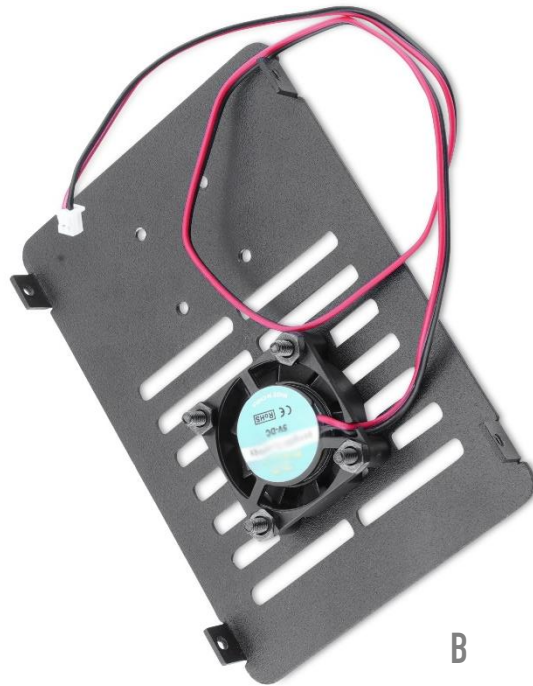


## 5. Install a fan

Remember to install the fan in the same direction as the image to make the fan blow air against the CPU.



A



B

## 6. Put together the lid with the bottom

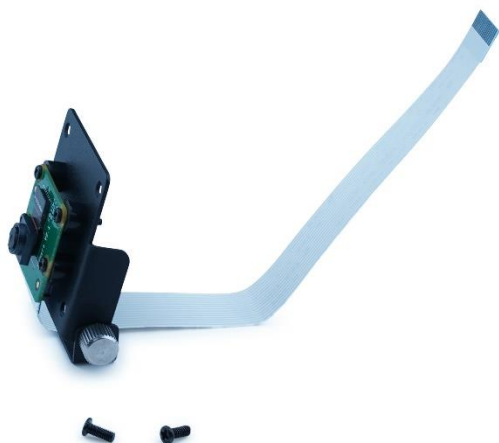


A



B

7. Mount the OKdo camera holder to the case



A



B



C