



C3W Pro

Smart Home Camera

Color Night Vision Camera.

The C3W Pro, the upgraded color night vision camera from EZVIZ, is embedded with an AI algorithm to provide the person detection and more precise alerts even in darkness. You can also have two-way conversations with your family or visitors wherever you are using the EZVIZ App on your mobile phone. Peace of mind, always at your fingertips.



FHD 1080p



Color Night Vision

H.265 H.265 Video Compression



AI-Powered Person Detection



Customizable Voice Alerts



Active Defense with Light and Sound



Two-Way Talk



IP67 Dust and Water Protection



Supports MicroSD Card (up to 256 GB)

Full-color night vision like you've never seen before.

Your night vision is now lit up and vividly restored to full-color thanks to two built-in spotlights and professional optical lenses. So advanced that you can quickly identify details of interest – like the color of the car passing by!



Color Night Vision



Black & White Night Vision

It also lights your way home.

The two spotlights are thoughtful. They not only make color imaging at night a reality but also offer outdoor lighting that you can turn on and off and even adjust their brightness as needed.



Or, enable color vision when necessary.

If you don't need extra lighting, just switch the camera to the black & white night vision via the EZVIZ App and still see 30 meters (98 ft.) far. A third night vision mode is unbelievably smart – it automatically turns on the spotlights upon detection of suspicious motion, so both notifications and remote look-ins will be in full-color.



Color Mode



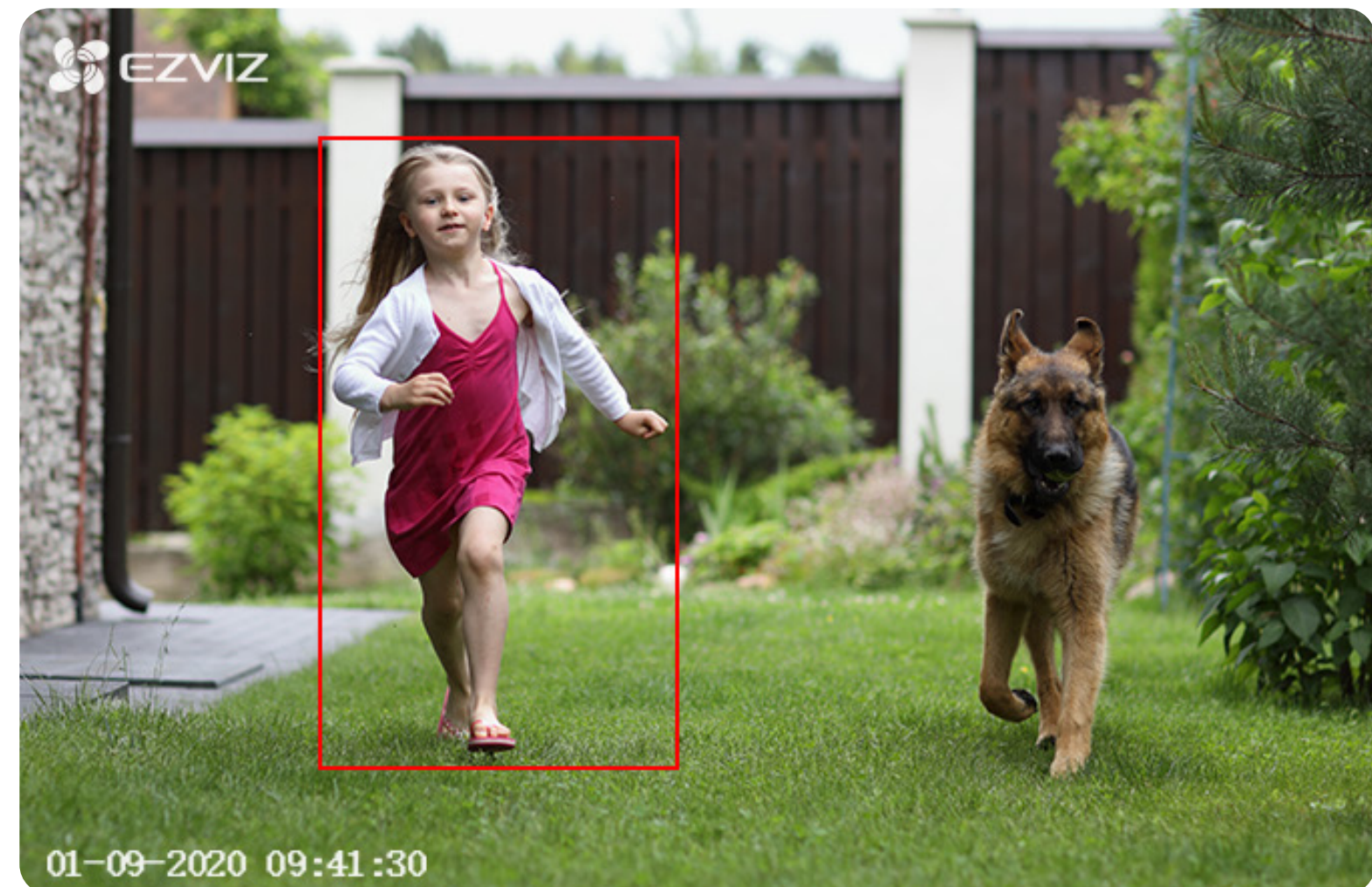
IR Mode



Smart Mode

AI-powered person detection.

As an upgrade from simple motion detection, the embedded AI algorithm intelligently detects the motion of human shapes in real-time. When people enter your customized detection area, you will be alerted immediately.



DIY alerts.

Along with default alert sounds, the camera also allows you to record three 10-second audio messages to either greet or deter visitors. Try something like, "Hello! Welcome!" Or perhaps, "Get away from my house!" It's time to be creative!



Guards at the gate.

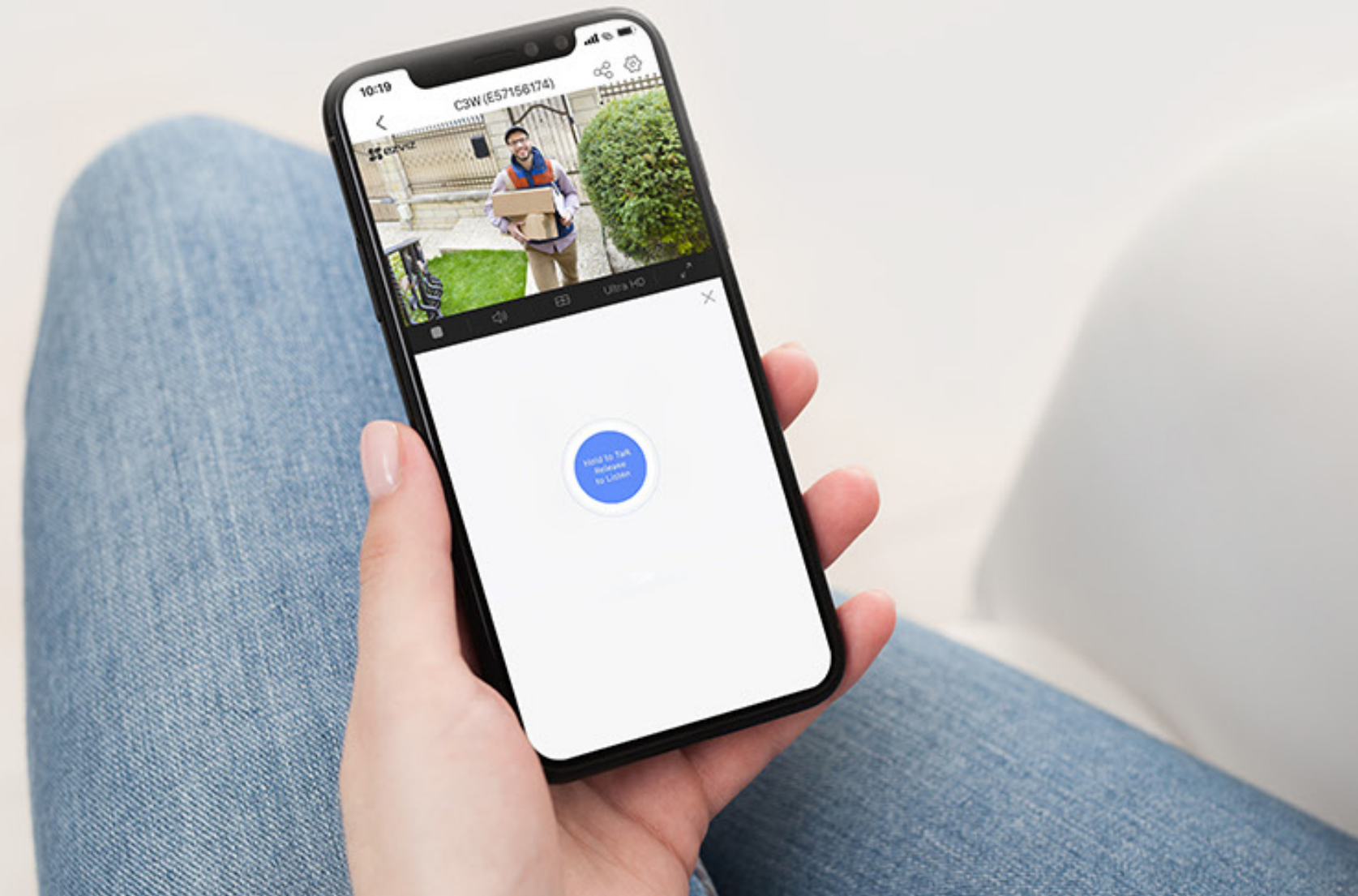
Designed to bring peace of mind, the C3W Pro camera comes with our proud Active Defense function. Upon detection of intruders, the camera will set off a loud siren and flash* two spotlights to scare them off.

*The spotlights will not flash in the darkness when color night vision mode is enabled.



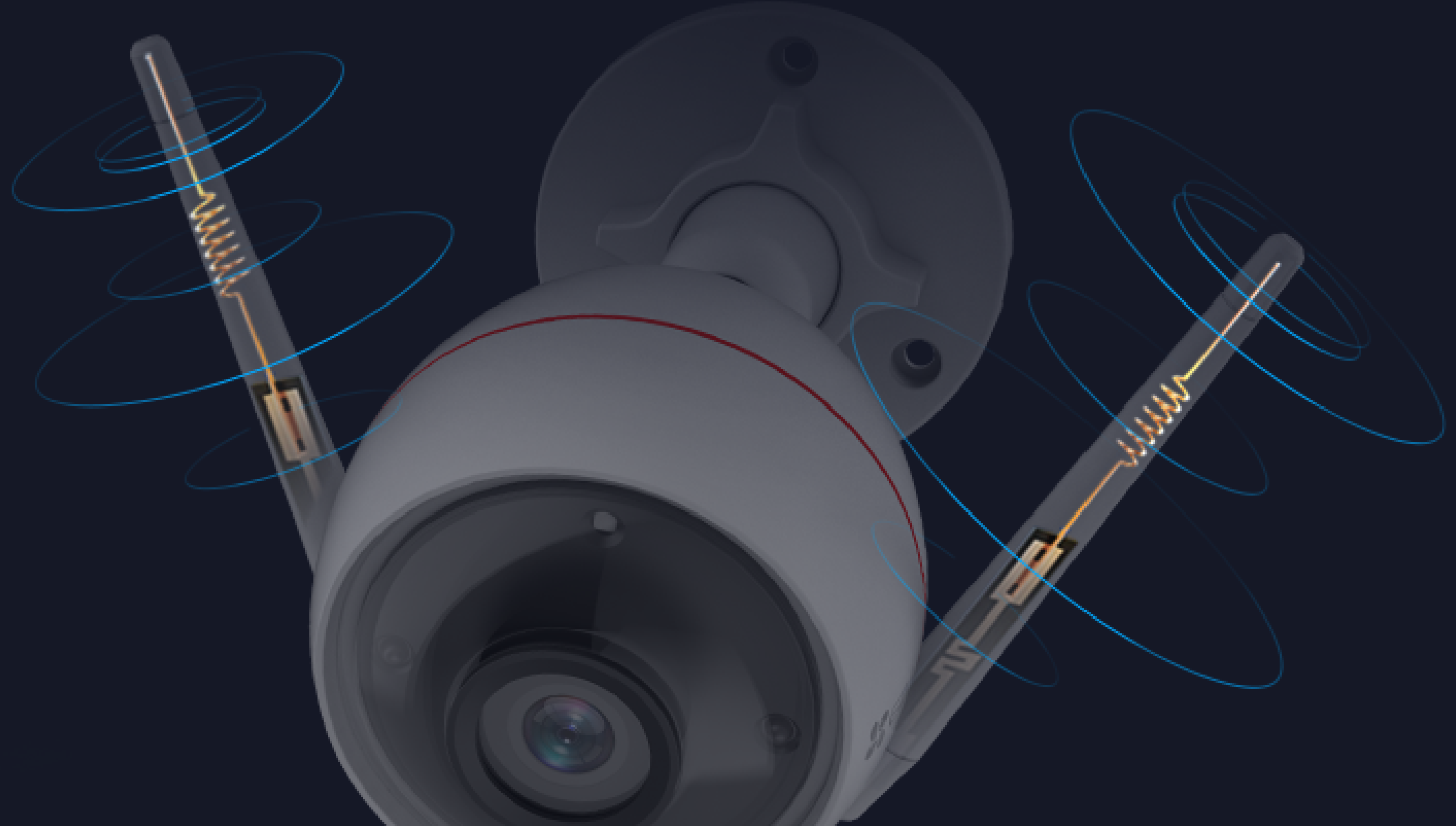
Talk, as if you were there.

Not every outdoor security camera supports two-way communication. The C3W Pro camera took this function to a new height with a high-fidelity speaker and a microphone that features an ultra-long pickup range, so you can hear loud and clear. Or talk as if you were there.



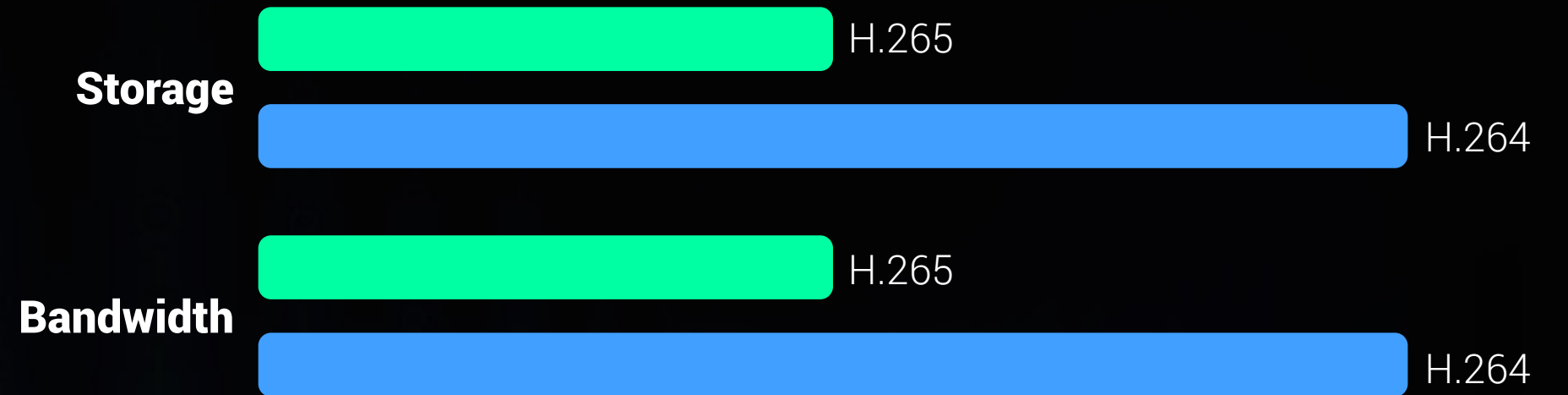
Enhanced connection.

Boasting wall-penetration and anti-interference capabilities, the dual-antenna C3W Pro camera handles long-range transmission easily. Enjoy the confidence to install the camera at the front gate or in your yard while maintaining a steady and reliable connection.



Save money on storage and bandwidth.

The camera features the advanced H.265 video compression technology, achieving better video quality with only half the bandwidth and half the storage space of the previous H.264 video compression standard.



Resists water and dust.

With a whole metallic enclosure and an IP67 rating, the camera can withstand rainy, sunny, stormy, and even snowy days, giving you year-round peace of mind.



Simple installation.

The C3W Pro camera features a 360° swivel and base so that you can install it on your ceiling or wall securely. In just a few minutes, you have a sophisticated security system.



Specifications Model CS-C3W-A0-3H2WFRL

Camera

| | |
|----------------------|---|
| Image Sensor | 1/2.7" Progressive Scan CMOS |
| Minimum Illumination | 0.01 lux @(F1.6, AGC ON), 0 lux with IR |
| Shutter Speed | Self-adaptive shutter |
| Lens | 2.8 mm @F1.6, view angle: 103° horizontal, 119° diagonal 4 mm @F1.6, view angle: 87° horizontal, 104° diagonal |
| Lens Mount | M12 |
| DNR | 3D DNR |
| WDR | Digital WDR |

Compression

| | |
|-------------------|--|
| Video Compression | H.265 / H.264 |
| Video Bit Rate | Ultra-HD; HD; Standard. Adaptive bit rate. |

General

| | |
|--|---|
| Working Temperature | -30 °C to 60 °C (22 °F to 140 °F) |
| Working Humidity | 95% or less (non-condensing) |
| Power Supply | DC 12 V / 1 A |
| Power Consumption | Max. 6 W |
| IP Grade | IP67 |
| Night Vision Distance (Black/White Night Vision Mode) | Max. 30 m (98.43 ft.) |
| Dimensions | 72 mm × 72 mm × 150 mm (2.83" × 2.83" × 5.91") |
| Packaging Dimensions | 252 mm × 110 mm × 92 mm (9.92" × 4.33" × 3.62") |
| Net Weight | 352 g(0.78 lbs) |

Network

| | |
|--------------------------|---|
| User Defined Alarm Tones | Supports |
| Wi-Fi Pairing | AP Pairing |
| Protocol | EZVIZ Cloud Proprietary Protocol |
| Interface Protocol | EZVIZ Cloud Proprietary Protocol |
| General Function | Anti-Flicker, Dual-Stream, Heart Beat, Password Protection, Watermark |
| Max. Bitrate | 2M |

Wi-Fi

| | |
|-------------------|--|
| Standard | IEEE802.11b, 802.11g, 802.11n |
| Frequency Range | 2.4 GHz ~ 2.4835 GHz |
| Channel Bandwidth | Supports 20 MHz |
| Security | 64/128-bit WEP, WPA/WPA2, WPA-PSK/WPA2-PSK |
| Transmission Rate | 11b: 11 Mbps, 11g: 54 Mbps, 11n: 144 Mbps |

Image

| | |
|-----------------|--|
| Max. Resolution | 1920 × 1080 |
| Frame Rate | Max: 30 fps; Self-adaptive during network transmission |

Interface

| | |
|---------------|---|
| Storage | MicroSD card slot (Max. 256 GB) |
| Wired Network | RJ45 × 1(10 M / 100 M Adaptive Ethernet Port) |

In the box

- C3W Pro Color Night Vision Camera
- Power Adapter (1.5 m)
- Mounting Template
- Screw Kit
- Waterproof Kit
- Quick Start Guide

Certifications:

UL / FCC / CE / WEEE / REACH / RoHS

Specifications are subject to change without notice. EZVIZ is a registered trademark of Hangzhou EZVIZ Network Co., Ltd.
Other brands and product names are trademarks or registered trademarks of their respective holders.

<https://www.ezvizlife.com/>