



RACK TRAY AND RACK-MOUNT POWER DISTRIBUTION

BF 2U · BER

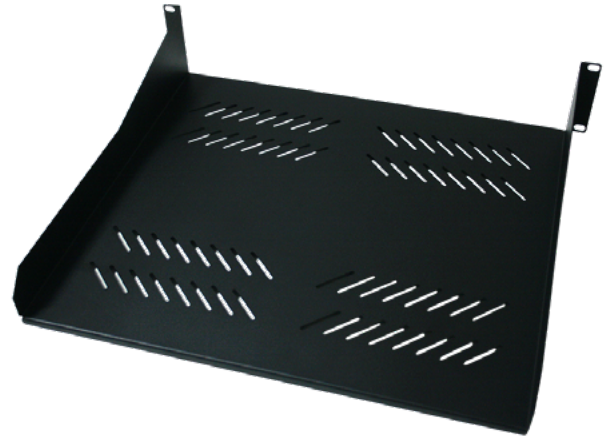


BF 2U

- ✓ Rack tray with front rack bracket 19"
- ✓ Manufactured with SPCC laminated steel to provide robustness and high static load in the installation.

BER

- ✓ Rack-mount power distribution unit to supply current in active equipment rack mounted
- ✓ Designed according to international standards
- ✓ Aluminum construction
- ✓ 19 "format with shukos type DIN 49440-1
- ✓ Switch ON/OFF



BF 2U



BER

180° turn
Rack support
or wall support

TECHNICAL TABLE

REFERENCE		BF 2U
Code		361014
Dimensions	mm	483 x 2U x 400
Material		Cold rolled steel
Max. load	kg	20
Thickness	mm	120 +/- 5
Fixing accessory		4 sets of screws

REFERENCE		BER
Code		361015
Conexions	n°	8
Type		DIN49440-1
Switch ON/OFF		✓ (protector to avoid accidental shutdown)
Short circuit protection		X
Max. load	A	16
Max. voltage	V	250
Max. power input	W	3500
Working voltage	V/Hz	220-250 AC 50 o 60
Contact resistance	m Ω	1-2