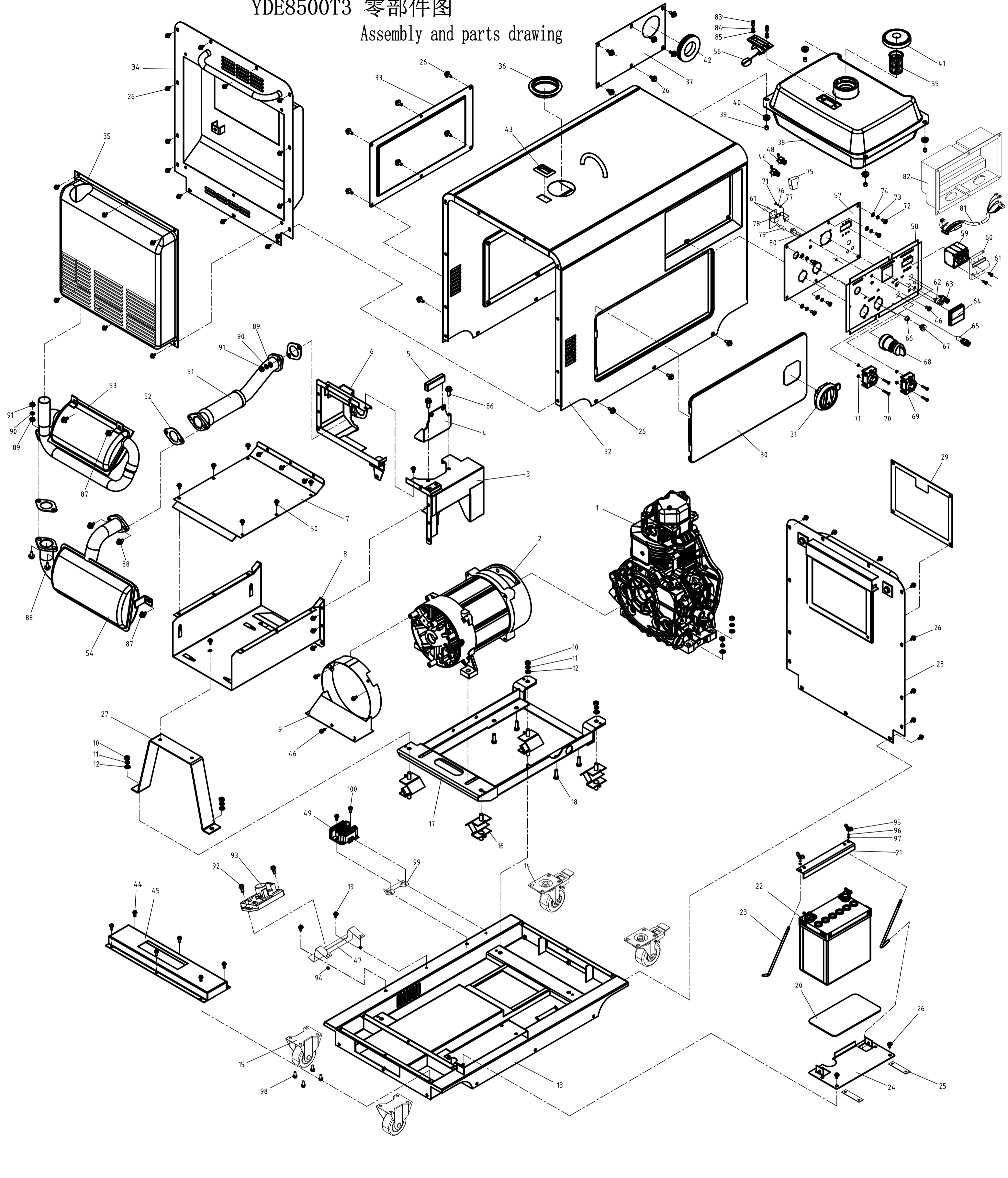


# YDE8500T3 零部件图

## Assembly and parts drawing



序号 No.	代号 Code	中文名称 Description	CN	英文名称 Description	EN	规格型号 Parts Code	数量 Qty	序号 No.	代号 Code	中文名称 Description	CN	英文名称 Description	EN	图号 Parts Code	数量 Qty
1	WG.DL.MY.0005	风冷柴油发动机总成(400V/50Hz)		Air cooled diesel engine		MD192GET-00000	1	36	WG.FL.QT.0014	油桶口减震套		Oil tank port damping sleeve		KDE5000T-05017	1
2	WG.DJ.KT.0010	三相有刷静音电机总成(400V/50Hz)		Three phase brush mute motor assembly (400V / 50Hz)		MTJ5204X140-00000	1	37	WG.BJ.JG.0090.11	滤气封板		Gas filter sealing plate		MDE5000T-0800001	1
3	WG.BJ.JG.0090.01	前引风板焊合件		Front induced draft plate weldment		MDE5000T-0110000	1	38	WG.BJ.VX.0002	油桶总成		Oil tank assembly		YDE5000T-11100	1
4	WG.BJ.JG.0090.01	缓冲支撑焊合件		Buffer support weldment		MDE5000T-011310	1	39	WG.FL.QT.0011	减震垫		Damping pad		MDJ78F-01201	4
5	WG.FL.QT.0019	缓冲套		Buffer sleeve		MDE5000T-01301	1	40	WG.FL.QT.0010	油桶盖		Cap as-tank		MDJ78F-01202	4
6	WG.BJ.JG.0090.02	后引风板焊合件		Rear induced draft plate weldment		MDE5000T-0120000	1	41	WG.CP.PJ.0260	油桶盖组件		Cap as-tank		KDE5000T-02200	1
7	WG.BJ.JG.0090.03	隔热腔盖板焊合件		Heat insulation chamber cover plate weldment		MDE5000T-0140000	1	42	WG.FL.QT.0012	空滤减震垫		Air filter damping pad		KDE5000T-05025	1
8	WG.BJ.JG.0090.04	隔热腔焊合件		Heat insulation cavity weldment		MDE5000T-0130000	1	43	WG.FL.QT.0015	窗框固定套		Window fixing sleeve		KDE5000T-05023	1
9	WG.BJ.JG.0090.05	电机引风罩焊合件		Motor induced draft hood weldment		MDE5000T-02100	1	44	WG.FL.BZ.0137	螺栓M5*12		Bolt M5*12		WG.CP.PJ.0341	13
10	WG.FL.BZ.0032	螺母M10		Nut M10		GB/T6170-2000	10	45	WG.BJ.JG.0005.06	电机底座风罩		Motor talstock air duct		MDE6700T-03201a	1
11	WG.FL.BZ.0074	弹簧垫圈 10		Spring washer 10		GB/T93-1987	10	46	WG.FL.BZ.0160	螺栓M4*12		Bolt M4*12		GB/T818-2000	1
12	WG.FL.BZ.0073	平垫圈 10		Flat washer 10		GB/T93-1987	10	47	WG.BJ.JG.0005.07	AVR支架		AVR support		MDE5000T-09002	1
13	WG.BJ.JG.0090.06	底座焊合件(配备万向轮)		Chassis weldment (equipped with universal wheel)		MDE5000T-a-0310000	1	48	WG.DQ.DL.0012	小型继电器		Small relay		SARE-112DF	2
14	WG.FL.LZ.0002	万向轮		Universal wheel		MD8500T-03005	2	49	WG.DQ.CD.0008	充电调节器		Charging regulator		SW-36AH	1
15	WG.FL.LZ.0001	定向轮		Directional wheel		MD8500T-03006	2	50	WG.FL.BZ.0141	螺栓M6*18		Bolt M6*18		GB/T5789-1986	12
16	WG.XJ.ZL.0012	减震块组合件 (II)		Damping block assembly (II)		MDE5000T-03700b	4	51	WG.JX.XS.0073.01	排气管焊合件		Exhaust pipe weldment		MDE5000T-1010000	1
17	WG.BJ.JG.0004.14	机架底座焊合件(配204电机)		Frame base weldment (with 204 motor)		MD6500E-03400	1	52	WG.JX.XS.0073.02	排气管垫片		Exhaust pipe gasket		MD192F-02015	3
18	WG.FL.BZ.0114	螺栓M5*20		Bolt M5*20		GB/T5783-2000	6	53	WG.JX.XS.0073.03	消声器 (一) 焊合件		Muffler (I) weldment		MDE5000T-1020000	1
19	WG.FL.BZ.0027	螺栓M5*20		Bolt M5*20		GB/T5789-1986	2	54	WG.JX.XS.0073.04	消声器 (二) 焊合件		Muffler (II) weldment		MDE5000T-1030000	1
20	WG.FL.XI.0050	电瓶板		Battery pad		MDE5000T-03018	1	55	WG.CP.PJ.0261	加油滤网		Refueling filter screen		MD168F-10004	1
21	WG.BJ.JG.0004.10	电瓶压板		Battery pressing plate		MDE5000T-03003a	1	56	WG.XV.WD.010	油桶组件		Oil tank assembly		MDE5000E-11300	1
22	WG.DQ.DP.0011	蓄电池 (阿波罗/阿波罗/理士)		Battery (Apollo / sail / show / 理士)		12V 36AH	1	57	WG.BJ.CZ.0087	仪表盘		Instrument panel		MDE5000T3-13110(400V/50HZ)	1
23	WG.BJ.JG.0004.08	电瓶拉杆 (长190)		Battery pull rod (length 190)		MDE5000T-03002	2	58	WG.FL.TS.0024	亚克力胶		Matte paste		MDE5000T3-13120(400V/50HZ)	1
24	WG.BJ.JG.0071.02	电瓶支架板		Battery support plate		MDE5000T-0300001	1	59	WG.DQ.DL.0068	百事水液继电器		BSS Hydro magnetic air switch		L-30	3
25	WG.BJ.JG.0071.03	电瓶支架板垫块		Battery support plate cushion block		MDE7000ST-0300003	1	60	WG.DQ.DL.0069	空开防水罩		Air opening waterproof cover		30-1P-FSM-R-X	3
26	WG.FL.BZ.0041	六角铜螺母M6*18		Hexagon combination bolt M6*18		GB/T6170.17-2000	54	61	WG.FL.BZ.0194	十字槽盘头螺钉 M3*8		Flat head screw M3*8		GB/T6170-2000	3
27	WG.BJ.JG.0090.02	隔热腔盖板焊合件		Heat insulation chamber support weldment		MDE5000T-03510	1	62	WG.DQ.LJ.0012	直流接线柱(蓝色)		DC terminal (red)		910	1
28	WG.BJ.JG.0090.07	右侧板焊合件		Right side panel weldment		MDE5000T-0610000	1	63	WG.DQ.LJ.0011	交流接线柱(蓝色)		AC terminal (black)		910	1
29	WG.BJ.JG.0090.08	空滤外盖板组件		Outer cover plate assembly of air filter		MDE5000T-06200	1	64	WG.DQ.QT.0052	三合一表		Three in one table		HJ301	1
30	WG.BJ.JG.0090.09	前门焊合件		Front door weldment		MDE5000T-a-0820000	1	65	WG.DQ.DL.0067	保险插座		Fuse holder		6x30	1
31	WG.XJ.MS.0018	门锁		Door lock		MS901	1	66	WG.FL.BZ.0017	螺母M6		NUT M6		GB/T6177.1-2000	1
32	WG.BJ.JG.0090.09	机箱焊合件(配备万向轮)		Cabinet weldment (equipped with universal wheel)		MDE5000T-a-0810000	1	67	WG.FL.BZ.0198	接地螺母		Grounding nut		M6镀锌	1
33	WG.BJ.JG.0005.04	右门焊合件		Rear door weldment		MDE5000T-05150	1	68	WG.DQ.QG.0034	电门锁		Electric door lock		JK427	1
34	WG.BJ.JG.0090.10	左门焊合件		Left side panel weldment		MDE5000T-0510000	1	69	WG.DQ.CT.0045	本田插座		Honda socket		B-008-01.1	2
35	WG.BJ.JG.0005.05	散热器组件		Cooling plate assembly		MDE6700T-05200	1	70	WG.FL.BZ.0096	十字槽盘头螺钉 M4*16		Flat head screw M4*16		GB/T6170-2000	4