



## PRESENTING OUR NEWEST INNOVATION

# ***ELECTRIC PALLET TURNTABLE***

Wrap pallets faster while improving ergonomics with an Electric Pallet Turntable (PTE) from BHS, Inc. This motorized rotating surface allows a single operator to wrap up to 12 pallet loads per hour. A foot pedal leaves hands free to hold a stretch wrap dispenser, while variable speeds of 0–12 revolutions per minute keep users in control. For power, simply plug the 20-foot cable into any standard 120 volt, 20-amp outlet. It's a simple, cost-effective way to make securing pallets safer and more efficient.



### **360-Degree Access**

High-profile design keeps the motor within the unit's footprint, allowing forklifts to load and unload pallets from any angle.



### **Built for Ergonomics**

Powered rotation removes the strain from pallet-wrapping, while an easy-grip handle helps with positioning the foot pedal.



### **Forklift Compatible**

Integrated two-way fork pockets allow the PTE to be transported and positioned via lift truck. Feet are also pre-drilled with anchor holes for permanent installation in a facility.



### **Custom Models Available**

Add a roller tabletop to integrate the PTE into a conveyor line. Switch to a circular platform. Support pallets of any size or weight. As a leader in custom design and manufacturing, BHS, Inc can build your PTE to match unique specifications.

**CONTACT THE BHS SALES TEAM FOR MORE INFORMATION ABOUT THIS PRODUCT**

Flip sheet over to learn more about this warehouse solution. [sales@bhs1.com](mailto:sales@bhs1.com) [1.800.BHS.9500](tel:1.800.BHS.9500)

# ELECTRIC PALLET TURNTABLE

## LIFT TABLES & PALLET POSITIONERS

### Ergonomic Design Reduces Fatigue



Prevents bending, reaching, and walking during load-wrapping to improve safety and productivity

### 360° Access

Elevated platform stands 18 3/16" (462 mm) high, with motor and controls beneath. Forklifts can load and unload the unit from any angle of approach



### Pallet Compatibility

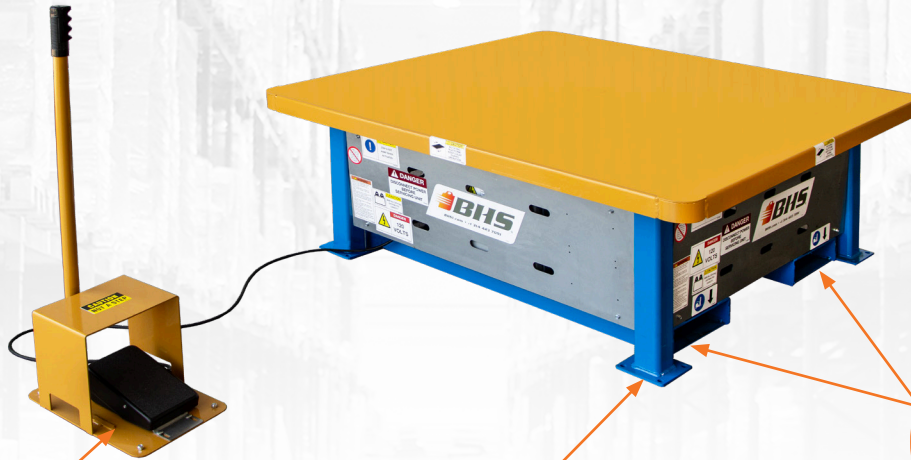
48" by 48" (1.2 m) tabletop is compatible with all standard size pallets. Custom sizes and shapes available on request.

### Standard Voltage Requirements

Powered by any standard 120 volt, 20 amp outlet

### High Output

Wraps 10 to 12 pallet loads per hour

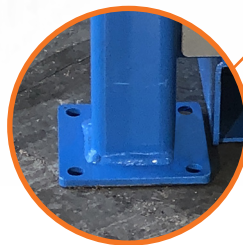


### Mobile Workspace



Two-way fork pockets allow transport via lift truck

### Added Support



Pre-drilled anchor holes for permanent installation

### High Load Capacity

4,000 lb (1,814 kg) load capacity

### Simple Control

Easy-to-use foot control pedal, with ergonomic 36.44" (926 mm) tall handle and 5-ft (1.5-m) cable

### Quick Processing

Variable-speed rotation from 0 to 12 revolutions per minute keeps the operator in control

| Model      | Capacity              | Tabletop                         | Height               | Weight             |
|------------|-----------------------|----------------------------------|----------------------|--------------------|
| PTE4K-4848 | 4,000 lb<br>(1814 kg) | 48" x 48"<br>(1219 mm x 1219 mm) | 18.1875"<br>(462 mm) | 563 lb<br>(255 kg) |