



## WAREHOUSE INNOVATIONS

# ***FLAT STACKING CARTS***

---

The Flat Stacking Cart (FSC) from BHS allows users to transport bulk quantities of furniture or other awkward materials quickly and safely, without the risk of musculoskeletal disorders associated with lifting heavy items. BHS FSCs are made with heavy-duty steel and finished with a durable powder coat to increase longevity.

### **Adjustable Design**

FSCs provide versatile material handling for industrial applications. Four removable steel posts allow effortless loading and unloading. This allows users to adjust the unit for different material handling needs.



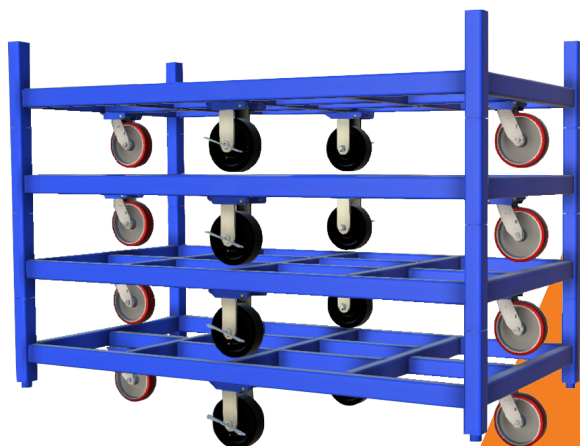
#### **Transport Bulky Items**

Cart construction allows ease of maneuverability to protect operator from injury while transporting heavy loads.



#### **Durable Construction**

Heavy-duty steel construction for industrial and warehousing applications. Powder coat protects frame for long-term dependability.



### ***Space-Saving***

---

The FSC stackable, nestable design takes up less space between uses. Units can be stacked with casters attached.

# FLAT STACKING CARTS

## INDUSTRIAL CARTS

### Bulk Product Transportation

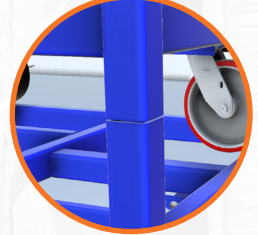


Portable storage for bulky items, including furniture

### Heavy Duty

Rugged construction features stand up to heavy industrial requirements and prevents product damage

### Nesting Design



Units stack for short term storage between uses, making the FSC a support product for peak season.\*

### Maneuverability

Swiveling industrial casters configured to improve maneuverability



### Forklift Compatible

Forklift portable for easy handling of loads up to 4000 lbs

### Wheel Brakes

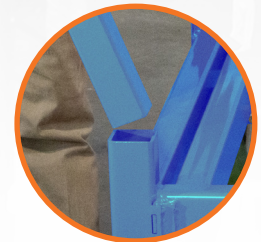


Dependable wheel brakes keep unit stable when not in use

### Custom Units Available

Custom alterations available for any material handling application

### Versatile Design



4 Removable steel posts simplify loading/unloading and double as push bars for simplified maneuvering

Model	Overall Height		Overall Width	Overall Length	Capacity	Unit Weight	Number of Casters
	With Posts	Without Posts					
<b>FSC-4824</b>	62" (1575 mm)	21" (533 mm)	24" (610 mm)	48" (1219 mm)	4000 lb (1814 kg)	255 lb (116 kg)	4 per unit
<b>FSC-6036</b>	62" (1575 mm)	21" (533 mm)	36" (914 mm)	60" (1524 mm)	4000 lb (1814 kg)	350 lb (159 kg)	6 per unit
<b>FSC-8340</b>	62" (1575 mm)	21" (533 mm)	40" (1016 mm)	83" (2108 mm)	4000 lb (1814 kg)	421 lb (191 kg)	6 per unit

\*Posts must be removed before stacking multiple units. Each FSC adds 13.625" (346 mm) when stacked for storage.