



BE Selector Switch Update

Models Affected: All Operator Aboard Battery Extractors

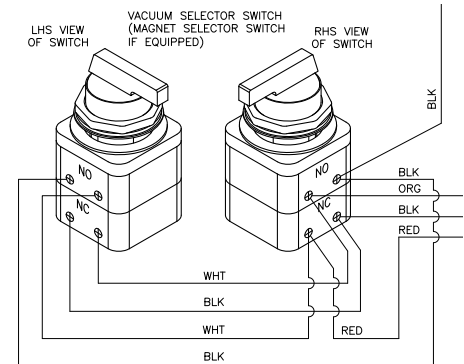
Tech Tip
TT-938

Subject:

BHS has determined that the research and implementation of a different vacuum/magnet selector switch was necessary for ease of operation and maintenance. The new switch uses fewer parts and requires simpler wiring which results in greater durability and minimal service.

Description:

Previously the selector switch was comprised of a selector with two normally open contacts and two normally closed contacts. Wiring of the switch required several jumper wires between the contacts complicating troubleshooting and replacement. The new switch, in use since October 2012, utilizes only two contact blocks, with normally open and normally closed contacts on each block, reducing the number of parts required and simplifying the wiring.



Old style switch wiring

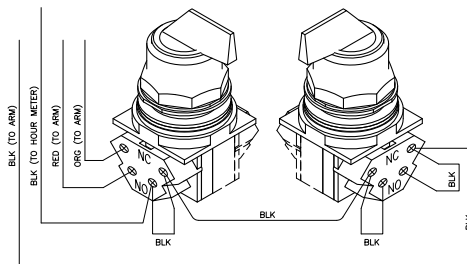
TECHNICAL SUPPORT DEPARTMENT
 1.877.BHS.4YOU M-F 8:00 a.m. - 5:00 p.m. CT
 (1.877.247.4968) BHS1.com

**BATTERY EXTRACTOR
SELECTOR SWITCH KIT
P/N: 80232001**

KIT SHOWN ASSEMBLED

QTY	PART#	DESCRIPTION
1	E1083	SELECTOR SWITCH-3 POSITION-30MM
2	E1080	CONTACT BLOCK- N/O & N/C-30MM
2	E1046	#14 MTW - BLACK
1	E1056	#14 MTW - RED
1	E1056-1	#14 MTW - GREEN
1	E1065	#14 MTW - WHITE
6	E0433	CRIMP CONNECTOR
1	80232001-i	INSTALLATION INSTRUCTIONS

©2008-2012, Battery Handling Systems Inc. St. Louis, MO. All Rights Reserved. 12/12 Rev 2



New style switch wiring

Recommendation:

Parts for the previous switch are no longer available. Therefore, any part replacement for the old switch will require upgrading to the current switch. The complete switch assembly is available as a kit, using the same kit number as the previous switch assembly (Part # 80232001). In order to make installation of the new switch as simple as possible, the kit is shipped completely assembled and wired. Only four wire nut connections are required for installation. For information on this and all of our available parts kits, please visit BHS1.COM. Parts kit information can be found in the "Knowledgebase" under the Service & Support tab.

For more information call: 1.877.BHS.4YOU
(Outside the U.S. +1 314 890 0953)

