

# USER MANUAL

## Sentry 3 FIPS

----- Aug 2016 -----



# Contents

## **About this User Guide**

- 3 System Requirements
- 4 Recommendations

## **Setup**

- 5 Setup- Windows
- 6 Device Initialization-Windows
- 9 Setup- Mac
- 10 Device Initialization- Mac

# About this User Guide

This quick start guide is for Sentry 3 FIPS®, an Optional Managed Secure USB device using the default system values and no customization.

For more information on the central management service, visit [safeconsole.com](https://safeconsole.com).

## SYSTEM REQUIREMENTS

---

### PC Platform

- 1-GHz Processor (or faster)
- 15MB free disk space
- USB 2.0/3.0
- Two available consecutive drive letters after the last physical drive

### PC Operating System Support

- Windows 10
- Windows 8, 8.1 (non RT)
- Windows 7 (SP1)
- Windows Vista® (SP2)

### Mac Platform

- 15MB free disk space
- USB 2.0/3.0

### Mac Operating System Support

- Mac OS X 10.9.x - 10.11.x



**Figure 1.1 – USB 2.0/3.0 Ports, Type A**



**Figure 1.2 – Sentry 3 FIPS**

## RECOMMENDATIONS

To ensure there is ample power provided to the Sentry 3 FIPS device, insert it directly into a USB 2.0/3.0 port on your notebook or desktop, as seen in **Figure 1.3**. Avoid connecting it to any peripheral device(s) that may feature a USB port, such as a keyboard or USB-powered hub, as seen in **Figure 1.4**.



**Figure 1.3 – Recommended Usage**

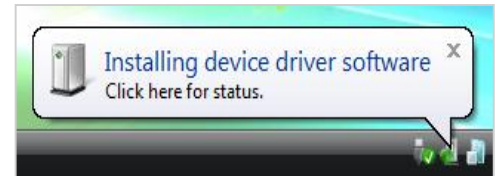


**Figure 1.4 – Not Recommended**

## SETUP (Windows Environment)

**Step 1.** Insert the Sentry 3 FIPS into an available USB port on your notebook or desktop and wait for Windows to detect it.

- Windows Vista/7/8/10 users will receive a device driver notification as seen in **Figure 2.1**.



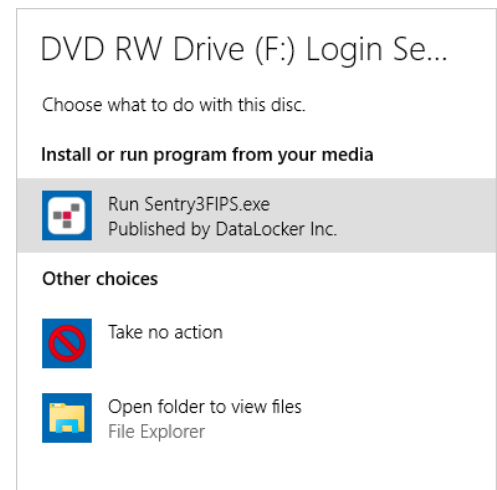
**Figure 2.1 – Device Driver Installation**

Once the new hardware detection is complete, Windows will prompt you to begin the initialization process.

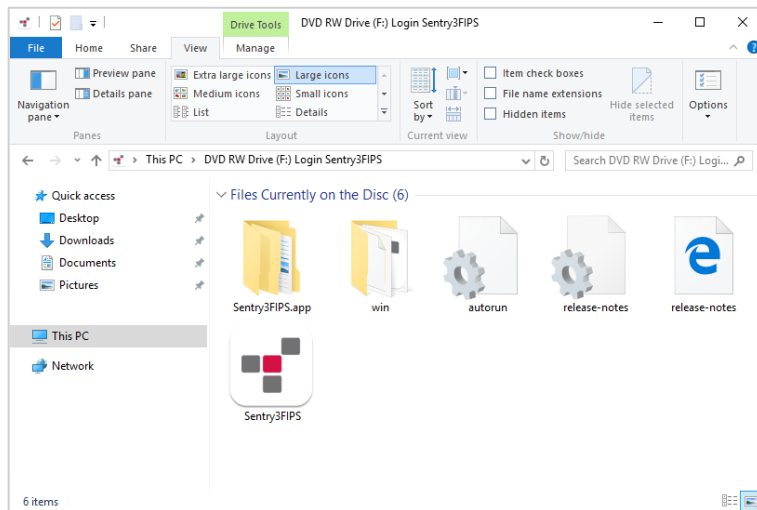
- Windows Vista/7/8/10 users will see an AutoPlay window similar to the one in **Figure 2.2**.

**Step 2.** Select the option 'Run Sentry3FIPS.exe'

If Windows does not AutoPlay, you can browse to the CD-ROM partition (**Figure 2.3**) and manually execute the Sentry 3 FIPS program. This will also start the initialization process.



**Figure 2.2 – AutoPlay Window**



**Figure 2.3 – Sentry 3 FIPS Contents**

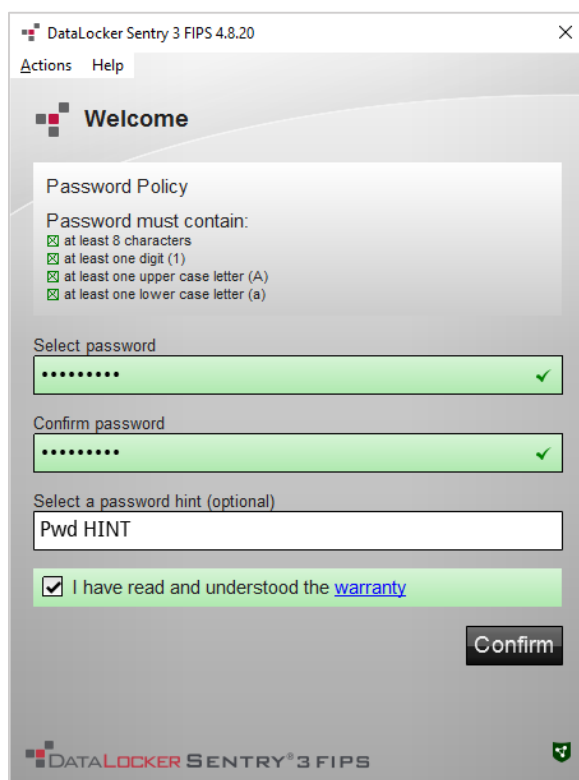
(Note: Menu options in the AutoPlay window may vary depending on what programs are currently installed on your computer. AutoRun will start the initialization process automatically.)

## DEVICE INITIALIZATION (Windows Environment)

Sentry 3 FIPS can be initialized one of two ways: Stand-alone or managed. Upon running DataLocker.exe you will be prompted to create a user password.

1. Select a password. Non-managed and stand-alone drives will require a password with the following criteria (**Figure 3.1**):

**Minimum of eight (8) characters, including 1 upper-case, 1 lower-case, & 1 digit**



**Note:** Managed drives will require passwords that meet the criteria set forth in the policy of the SafeConsole server.

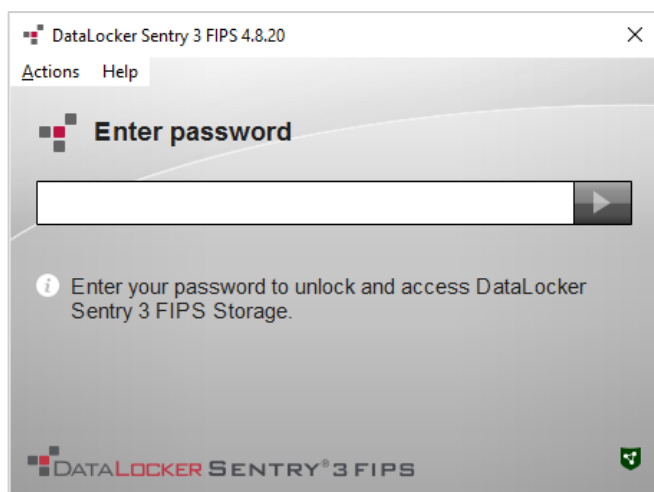
**Figure 3.1 – Confirm Password**

2. Once a password has been selected (and it meets the specified criteria), you must enter it a second time in the 'Confirm Password' text box to ensure proper entry.
3. Click the checkbox to accept the warranty statement.
4. Click [**Confirm**] to complete initialization.

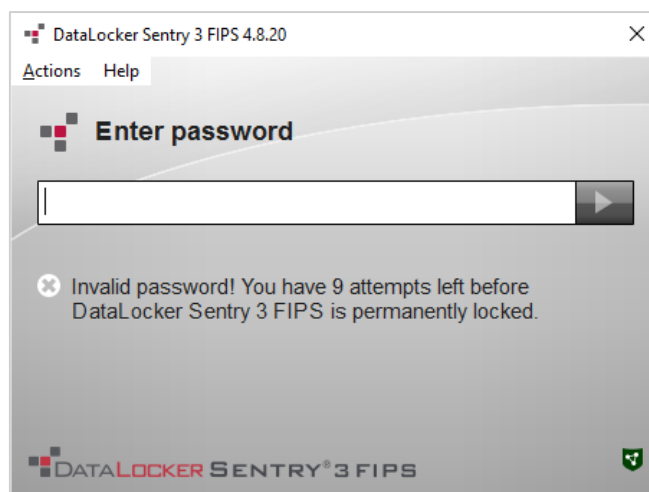
## DEVICE USAGE (Windows Environment)

With each insertion of the Sentry 3 FIPS, you will be prompted to enter the password created during the initialization process (**Figure 4.1**). During the login process, if an invalid password is entered (**Figure 4.2**), you will be given another opportunity to enter the correct password; note that there is a built-in security feature that tracks the number of invalid login attempts and if this number reaches the pre-configured value of 10 (maximum number of invalid logins), the Sentry 3 FIPS will lock the user out and require a device reset. **Figure 4.3**

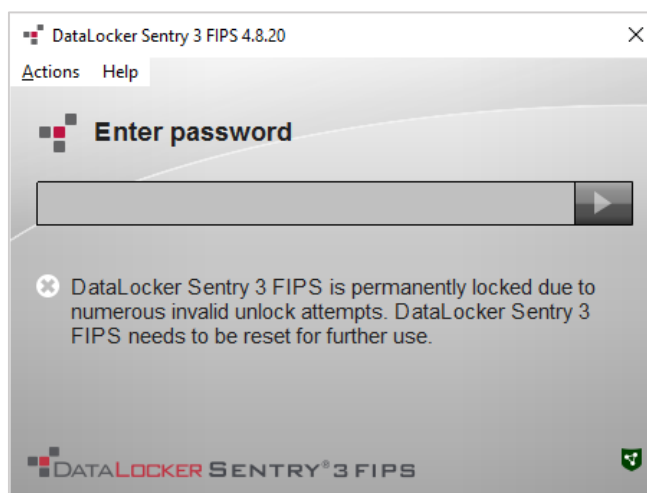
*(Note: Prior to locking the device with 10 invalid password attempts, the login counter will reset with a successful login.)*



**Figure 4.1 – Enter Password**




**Figure 4.2 – Login Failure**



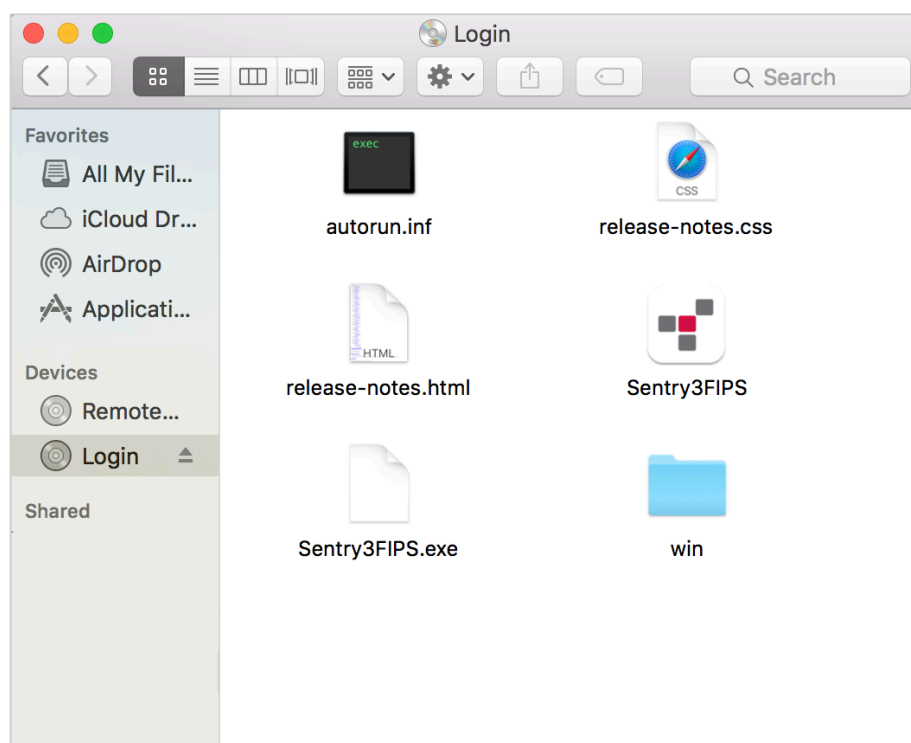
**Figure 4.3 – MaxNoA Reached**

## SETUP (Mac Environment)

Insert the Sentry 3 FIPS into an available USB port on your Mac notebook or desktop and wait for the operating system to detect it. If the 'Login' volume (**Figure 5.1**) does not appear on the desktop, open Finder  and locate the 'Login' volume (**Figure 5.2**) on the left side of the Finder window (listed under **DEVICES**.) Highlight the volume and double-click the 'Sentry3FIPS' application icon the 'Finder' window. (**Figure 5.2**) This will start the initialization process.



**Figure 5.1 – Sentry 3 FIPS**



**Figure 5.2 – Contents**

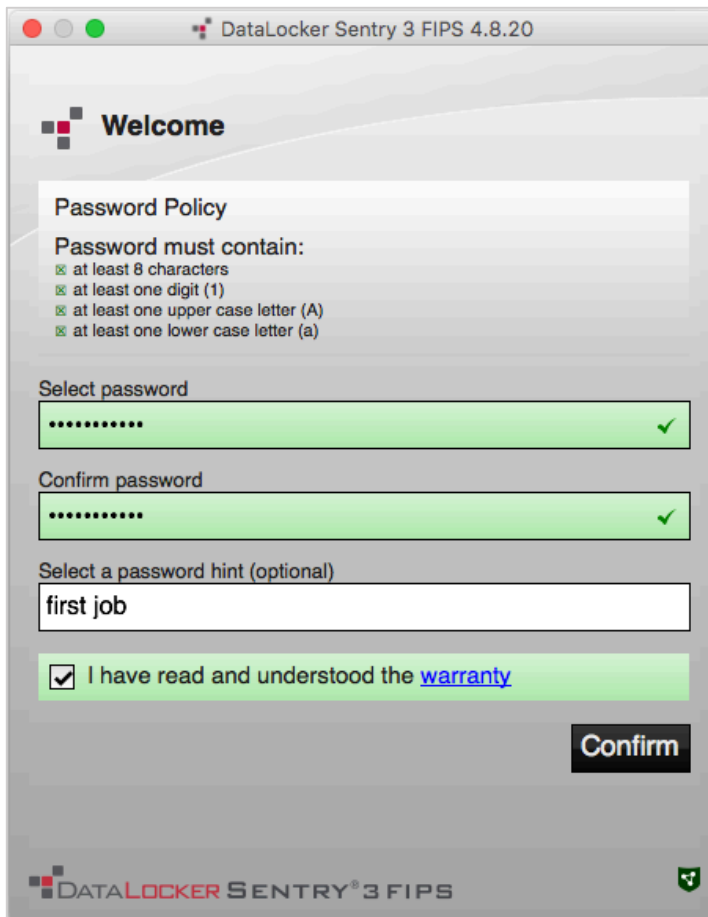


## DEVICE INITIALIZATION (Mac Environment)

Sentry 3 FIPS can be initialized one of two ways: Stand-alone or managed. Upon running Sentry3FIPS.app you will be prompted to create a user password.

1. Select a password. Non-managed and stand-alone drives will require a password with the following criteria (**Figure 6.1**):

**Minimum of eight (8) characters, including 1 upper-case, 1 lower-case, & 1 digit**



The screenshot shows the 'DataLocker Sentry 3 FIPS 4.8.20' application window. It features a 'Welcome' message and a 'Password Policy' section. The policy states: 'Password must contain: at least 8 characters, at least one digit (1), at least one upper case letter (A), and at least one lower case letter (a)'. Below this, there are two password input fields: 'Select password' and 'Confirm password', both showing masked characters and a green checkmark. A 'Select a password hint (optional)' field contains the text 'first job'. A checkbox is checked, with the text 'I have read and understood the [warranty](#)'. A 'Confirm' button is located at the bottom right of the form area. The DataLocker logo and 'SENTRY 3 FIPS' text are visible at the bottom left of the window.

**Note:** Managed drives will require passwords that meet the criteria set forth in the policy of the SafeConsole server.

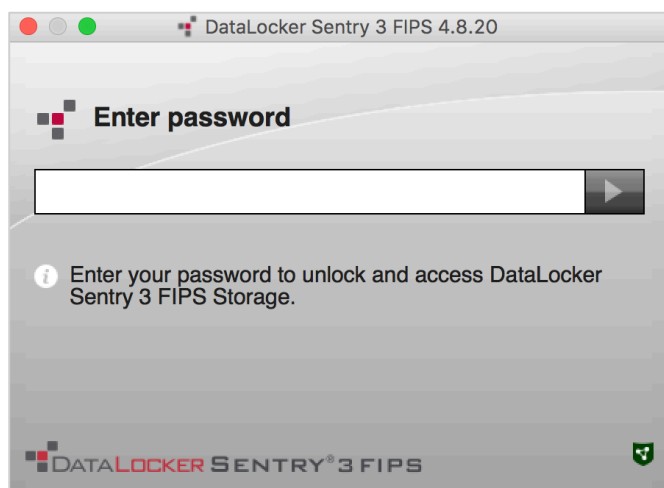
**Figure 6.1 – Confirm Password**

1. Once a password has been selected (and it meets the specified criteria), you must enter it a second time in the 'Confirm Password' text box to ensure proper entry.
2. Click the checkbox to accept the warranty statement.
3. Click [**Confirm**] to complete initialization.

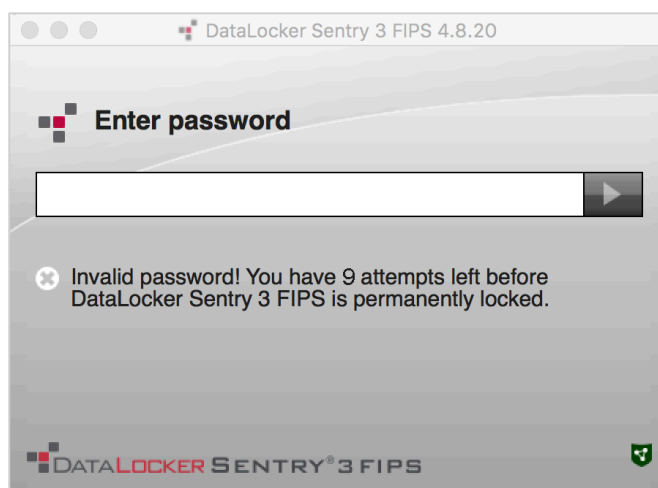
## DEVICE USAGE (Mac Environment)

With each insertion of the Sentry 3 FIPS, you will be prompted to enter the password created during the initialization process (**Figure 7.1**). During the login process, if an invalid password is entered (**Figure 7.2**), you will be given another opportunity to enter the correct password; note that there is a built-in security feature that tracks the number of invalid login attempts and if this number reaches the pre-configured value of 10 (maximum number of invalid logins), the Sentry 3 FIPS will lock the user out and require a device reset. **Figure 7.3**

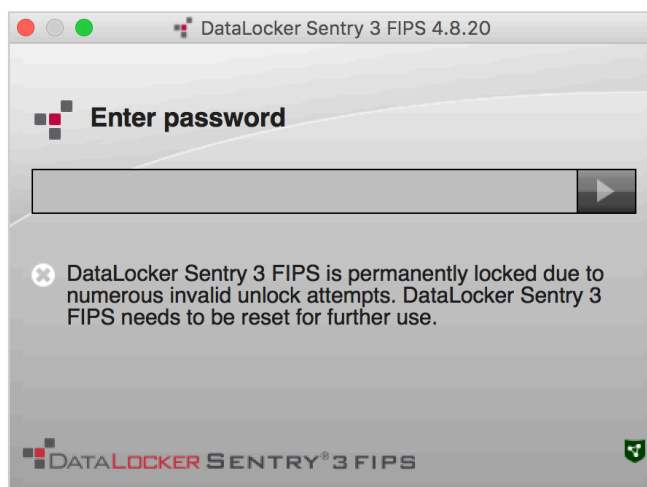
*(Note: Prior to locking the device with 10 invalid password attempts, the login counter will reset with a successful login.)*



**Figure 7.1 – Enter Password**



**Figure 7.2 – Login Failure**



**Figure 7.3 – MaxNoA Reached**