

# Rotating telehandlers

Roto 50.30



**PERFORMANCE AND FEATURES****ROTO50.30S****ROTO50.30SPLUS****Performance**

Unladen weight (kg)

19800

20500

Maximum load capacity (kg)

4950

4950

Lift height (m)

29.2

29.2

Maximum reach (m)

25.4

25.4

Lift height at max. load capacity (m)

11.6

11.6

Reach at max. load capacity (m)

9.1

9.1

Load capacity at max. lift height (m)

2000

2000

Load capacity at max. reach (kg)

400

400

Boom side-shift (mm)

-

-

Frame levelling (%)

+/-12, +/-4

+/-12, +/-4

Boom section

5

5

**Powertrain**

Engine

FPT NEF45

FPT NEF45

Range/Cylinders

4500/4

4500/4

Engine power (kW/HP)

125/170

125/170

Anti-pollution technology

Stage V - DOC + DPf+ SCR

Stage V - DOC + DPf+ SCR

Reversible Fan

-

-

Maximum speed (km/h)

40

40

Fuel tank capacity (l)

150

150

AdBlue tank capacity (l)

43

43

Hydrostatic transmission

YES - 2V

YES - 2V

EPD

STD

STD

Joystick autoaccelerante

STD

STD

Axles

Axial

Axial

Reducers

Epicyclic

Epicyclic

Brakes

Dry discs

Dry discs

**Hydraulic**

Hydraulic pump

LS + FS

2 - LS + FS

Delivery / pressure (L / MIN - BAR)

138 - 250

138+100 - 250/230

Hydraulic oil tank capacity (l)

120

120

Auxiliary hydraulic service on boom

●

●

Rear service line

-

-

**Cab**

Cab finishing

PREMIUM

PREMIUM

ASCS

Full

Full

FOPS II Cab

●

●

ROPS Cab

●

●

Controls

Electronic joystick control

Electronic joystick control

Tilting cab

-

●

Reverse shuttle

Dual reverse

Dual reverse

**Configuration**

Hydropneumatic Suspension CS Merlo

-

-

Hydropneumatic Suspension BSS Merlo

○

○

Hydropneumatic Suspension EAS Merlo

●

●

Work lights on cab

○

○

Sun-shade in the cab

●

●

Tac-lock

●

●

Pre-arrangement for aerial work platform

●

●

Two floating forks

●

●

Pedal Inching-Control

-

-

Permanent four-wheel drive

●

●

All wheel steering

●

●

Three steering way

●

●

Standard tyres

OPT tyres

Hydraulically controlled stabilizers

Turret rotation

Tractor type approval

Pneumatic brakes (ton)

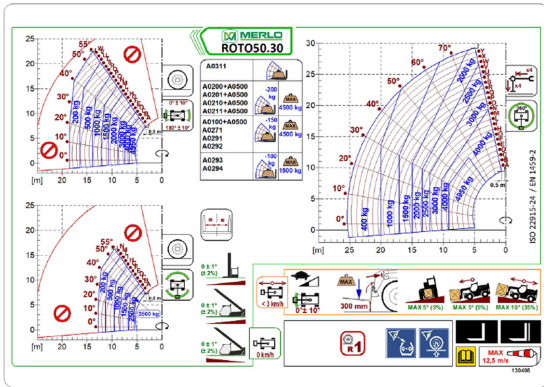
Hydraulic brakes (ton)

PTO

3-point rear linkage



— not available  
● standard  
○ optional



LUMINOZZI INC. - MOTORI (EU) (02)

3 - 23



ME

Dimensions



	ROTO50.30S	ROTO50.30PLUS	
A - Length	7790	-	
C - Wheelbase	3200	5620	
F - Ground clearance	290	290	
H - Width	2490	2490	
M - Cabin width	1010	1010	
P - Height	3160	3160	
R - Turning radius at wheels	4500	4500	
S - Turning radius at forks	6770	6770	

**Your Merlo dealer**

**MERLO S.P.A.**

Via Nazionale, 9

12010 S. Defendente di Cervasca, (Cuneo) Italia

Tel. +39 0171 614111

Fax +39 0171 684101

[info@merlo.com](mailto:info@merlo.com)

[www.merlo.com](http://www.merlo.com)



