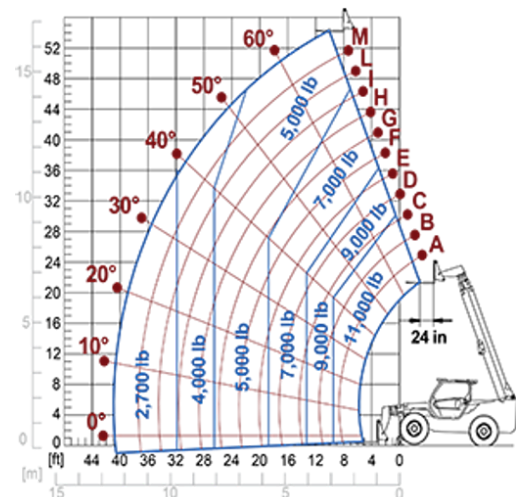


Stabilized telehandlers

Regulatory area: NA
P50.17



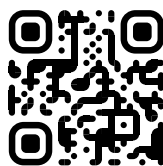
MODEL	P50.17TOP
A - Length (in)	236
C - Wheelbase (in)	120
F - Ground clearance (in)	19
H - Width (in)	98
M - Cab width (in)	40
P - Height (in)	100
S - Fork steering range (in)	214



MODEL	P50.17TOP
PERFORMANCE	
Unladen weight (lb)	31526
Maximum load capacity (lb)	11000
Lift height (ft)	54'
Maximum reach (ft)	41'
Boom side-shift (in)	+/- 17.1
Frame levelling (%)	+/- 8
Boom section	4
POWERTRAIN	
Engine	PERKINS 904
Range/Cylinders (l)	3.6/4
Engine power (kW/HP)	85.9/115
Anti-pollution technology	Stage V - SCR + DOC + DPF
Reversible Fan	●
Maximum speed (mph)	25
Fuel tank capacity (gal)	37
AdBlue tank capacity (gal)	4.8
Hydrostatic transmission EPD	TOP- 2V
Electronic joystick	STD
Axles	Drop portal
Brakes	Dry discs
HYDRAULIC	
Delivery / pressure (gal/min-psi)	38.3 - 3626
Hydraulic oil tank capacity (gal)	29
CAB	
ASCS	Full
FOPS/ROPS Cab	●
Tilting cab	—
CONFIGURATION	
Hydropneumatic Suspension CS Merlo	—
Hydropneumatic Suspension EAS Merlo	—
Permanent four-wheel drive	●
Three steering way	●
Standard tyres	400/80-24"
Hydraulically controlled stabilizers	Narrow
Turret rotation	—
PTO (rpm)	—
3-point rear linkage (lb)	—

— NOT AVAILABLE • ● STANDARD • ○ OPTIONAL

Your Merlo dealer



MERLO S.p.A.

Via Nazionale, 9
12010 S. Defendente di Cervasca, (Cuneo) Italia
Tel. +39 0171 614111

info@merlo.com www.merlo.com

Release 21/11/2025 - 8:52

Data, specifications and illustrations contained in this document are indicative and not binding. Merlo S.p.A. pursues a policy of continuous research and development; therefore, products may differ from those described or be subject to change without prior notice. The products shown may include optional equipment.