

Compact Telehandlers

Turbofarmer 27.6





PERFORMANCE AND FEATURES

TF27.6

Performance

Unladen weight (kg)	4850
Maximum load capacity (kg)	2700
Lift height (m)	5.9
Maximum reach (m)	3.4
Lift height at max. load capacity (m)	4.2
Reach at max. load capacity (m)	1.2
Load capacity at max. lift height (m)	1500
Load capacity at max. reach (kg)	900
Boom side-shift (mm)	-
Frame levelling (%)	-
Boom section	2

Powertrain

Engine	Kohler 2504 TCR
Range/Cylinders	2500/4
Engine power (kW/HP)	55,4/75,1
Anti-pollution technology	Stage V - DOC + DPF
Reversible Fan	-
Maximum speed (km/h)	40
Fuel tank capacity (l)	70
AdBlue tank capacity (l)	-
Hydrostatic transmission	TOP - 1V
EPD	PLUS
Joystick autoaccelerante	-
Axles	Axial
Reducers	Epicyclic
Brakes	Dry discs
Automatic parking brake	●

Hydraulic

Hydraulic pump	Gear + FS
Delivery / pressure (L / MIN - BAR)	95-210
Hydraulic oil tank capacity (l)	70
Auxiliary hydraulic service on boom	●
Rear service line	○

Cab

Cab finishing	Standard
ASCS	Complete
FOPS II Cab	●
ROPS Cab	●
Controls	Electronic joystick control
Tilting cab	-
Reverse shuttle	Dual reverse

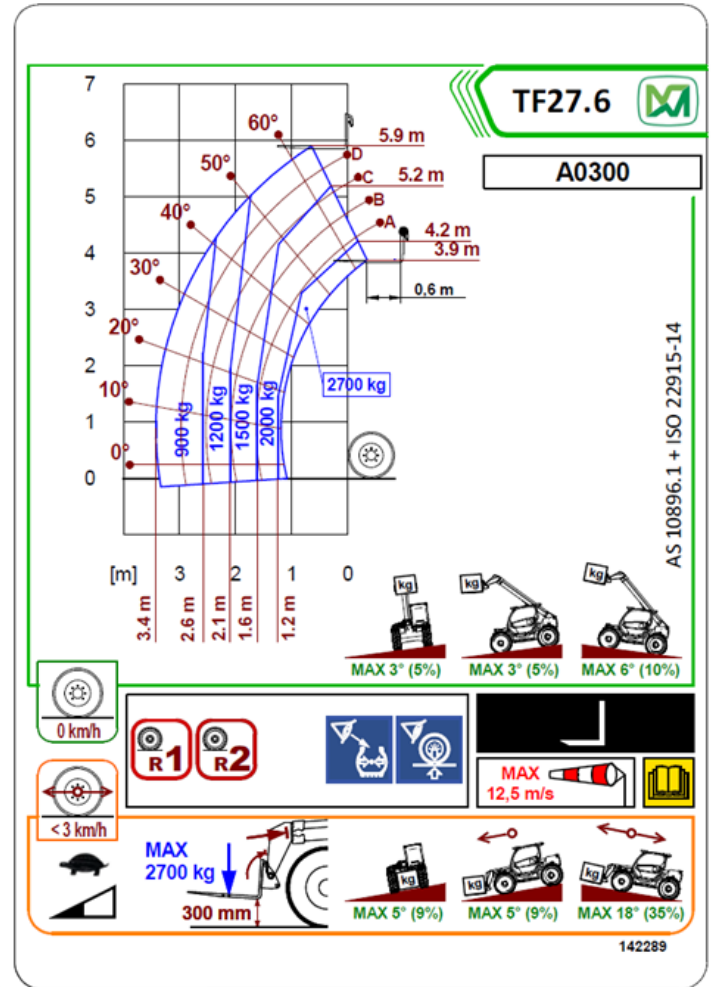
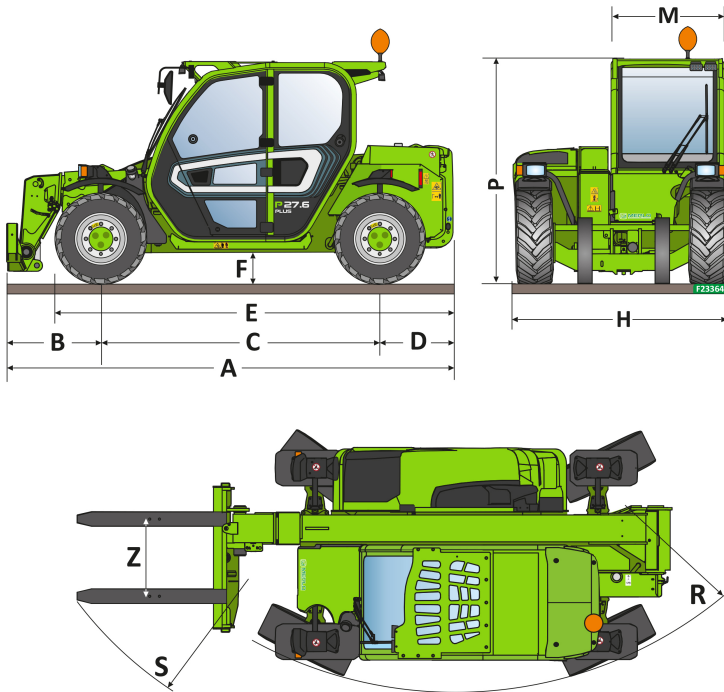
Configuration

Hydropneumatic Suspension CS Merlo	-
Hydropneumatic Suspension BSS Merlo	○
Hydropneumatic Suspension EAS Merlo	-
Work lights on cab	●
Sun-shade in the cab	○
Tac-lock	●
Pre-arrangement for aerial work platform	○
Two floating forks	●
Pedal Inching-Control	●
Permanent four-wheel drive	●
All wheel steering	●
Three steering way	●
Standard tyres	12/75-18
OPT tyres	300/80-15.3
Hydraulically controlled stabilizers	-
Turret rotation	-
Tractor type approval	-
Pneumatic brakes (ton)	-
Hydraulic brakes (ton)	○
PTO	-



- not available
● standard
○ optional

Diagramma di carico



Dimensions



	TF27.6		
A - Length	3910		
C - Wheelbase	2450		
F - Ground clearance	330		
H - Width	1860		
M - Cabin width	1010		
P - Height	2020		
R - Turning radius at wheels	3370		
S - Turning radius at forks	4200		

Your Merlo dealer

MERLO S.P.A.

Via Nazionale, 9

12010 S. Defendente di Cervasca, (Cuneo) Italia

Tel. +39 0171 614111

Fax +39 0171 684101

info@merlo.com

www.merlo.com



