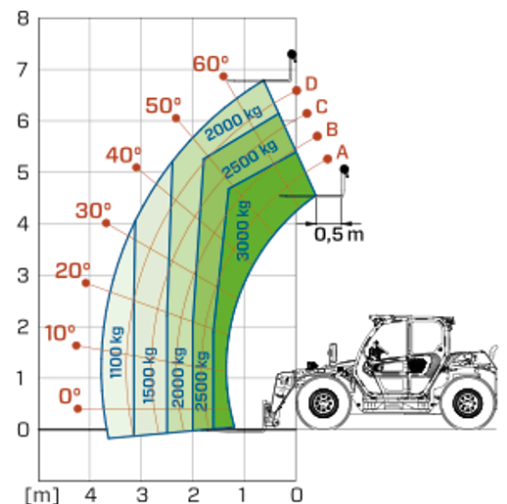


Compact Telehandlers

Regulatory area: EU
TF30.7



MODEL	TF30.7	TF30.7L	TF30.7CS
A - Length (mm)	4510	4510	4490
C - Wheelbase (mm)	2800	2800	2800
F - Ground clearance (mm)	300	300	300
H - Width (mm)	2000	2000	2000
M - Cab width (mm)	1010	1010	1010
P - Height (mm)	2120	2000	2210
S - Fork steering range (mm)	3820	3820	3820

MODEL	TF30.7	TF30.7L	TF30.7CS
PERFORMANCE			
Unladen weight (kg)	6750	6750	6900
Maximum load capacity (kg)	3000	3000	3000
Lift height (m)	6.7	6.7	6.7
Maximum reach (m)	3.7	3.7	3.7
Boom side-shift (mm)	—	—	—
Frame levelling (%)	—	—	—
Boom section	2	2	2
POWERTRAIN			
Engine	DEUTZ TCD2.9HP	DEUTZ TCD2.9HP	DEUTZ TCD2.9HP
Range/Cylinders (l)	2.9/4	2.9/4	2.9/4
Engine power (kW/HP)	75/101.7	75/101.7	75/101.7
Anti-pollution technology	Stage V - SCR + DOC + DPF	Stage V - SCR + DOC + DPF	Stage V - SCR + DOC + DPF
Reversible Fan	○	○	○
Maximum speed (km/h)	40	40	40
Fuel tank capacity (l)	90	90	90
AdBlue tank capacity (l)	12	12	12
Hydrostatic transmission EPD	●	●	●
Electronic joystick	●	●	●
Axles	Axial	Axial	Axial
Brakes	Dry discs	Dry discs	Dry discs
HYDRAULIC			
Delivery / pressure (bar-l/min)	100-250	100-250	100-250
Hydraulic oil tank capacity (l)	55	55	55
CAB			
ASCS	Light	Light	Light
FOPS/ROPS Cab	●	●	●
Tilting cab	—	—	—
CONFIGURATION			
Hydropneumatic Suspension CS Merlo	—	—	●
Frame suspension	—	—	—
Permanent four-wheel drive	●	●	●
Three steering way	●	●	●
Standard tyres	400/70-20"	400/70-20"	400/70-20"
Hydraulically controlled stabilizers	—	—	—
Turret rotation	—	—	—
PTO (rpm)	—	—	—
3-point rear linkage (kg)	—	—	—

— NOT AVAILABLE • ● STANDARD • ○ OPTIONAL

Your Merlo dealer



MERLO S.P.A.

Via Nazionale, 9
12010 S. Defendente di Cervasca, (Cuneo) Italia
Tel. +39 0171 614111

info@merlo.com www.merlo.com

Release 16/06/2026 - 12:29

Data, specifications and illustrations contained in this document are indicative and not binding. Merlo S.p.A. pursues a policy of continuous research and development; therefore, products may differ from those described or be subject to change without prior notice. The products shown may include optional equipment.