

# High capacity telehandlers

Panoramic 72.10





## PERFORMANCE AND FEATURES

P72.10EE

### Performance

Unladen weight (kg)	11300
Maximum load capacity (kg)	7200
Lift height (m)	9.55
Maximum reach (m)	5.2
Lift height at max. load capacity (m)	6.56
Reach at max. load capacity (m)	2
Load capacity at max. lift height (m)	4000
Load capacity at max. reach (kg)	2100
Boom side-shift (mm)	+/- 250
Frame levelling (%)	+/- 8
Boom section	2



### Powertrain

Engine	Perkins 904J
Range/Cylinders	3600/4
Engine power (kW/HP)	85,9/115
Anti-pollution technology	Stage V - SCR + DPF + DOC
Reversible Fan	●
Maximum speed (km/h)	40
Fuel tank capacity (l)	140
AdBlue tank capacity (l)	18
Hydrostatic transmission	YES - 2V
EPD	STD
Joystick autoaccelerante	STD
Axles	Drop portal
Reducers	RR 700
Brakes	Dry discs



### Hydraulic

Hydraulic pump	LS
Delivery / pressure (L / MIN - BAR)	108 - 250
Hydraulic oil tank capacity (l)	100
Auxiliary hydraulic service on boom	●
Rear service line	○



### Cab

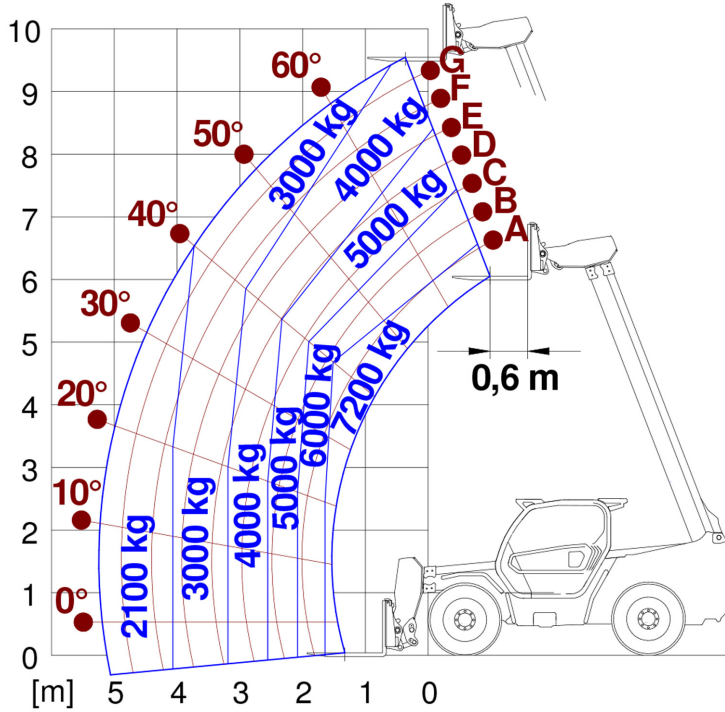
Cab finishing	ECO
ASCS	Full
FOPS II Cab	●
ROPS Cab	●
Controls	Electronic joystick control
Tilting cab	—
Reverse shuttle	Dual reverse



### Configuration

Hydropneumatic Suspension CS Merlo	—
Hydropneumatic Suspension BSS Merlo	—
Hydropneumatic Suspension EAS Merlo	—
Work lights on cab	○
Sun-shade in the cab	○
Tac-lock	●
Pre-arrangement for aerial work platform	○
Two floating forks	●
Pedal Inching-Control	●
Permanent four-wheel drive	●
All wheel steering	●
Three steering way	●
Standard tyres	—
OPT tyres	—
Hydraulically controlled stabilizers	—
Turret rotation	—
Tractor type approval	—
Pneumatic brakes (ton)	—
Hydraulic brakes (ton)	—
PTO	—
3-point rear linkage	—

— not available  
 ● standard  
 ○ optional



Dimensions



	P72.10EE		
A - Length	5480		
C - Wheelbase	2920		
F - Ground clearance	450		
H - Width	2240		
M - Cabin width	1010		
P - Height	2500		
R - Turning radius at wheels	3970		
S - Turning radius at forks	4990		

**Your Merlo dealer**

**MERLO S.P.A.**

Via Nazionale, 9

12010 S. Defendente di Cervasca, (Cuneo) Italia

Tel. +39 0171 614111

Fax +39 0171 684101

[info@merlo.com](mailto:info@merlo.com)

[www.merlo.com](http://www.merlo.com)



