

Attachments

Europe version



Y497ENG
0126

 **MERLO**

Merlo carriages

ZM2S carriage

CARRIAGE MODEL	WIDTH (mm)	HEIGHT (mm)	MAXIMUM LOAD CAPACITY (kg)
ZM2 S	840	445	2500

ZM2 carriage

CARRIAGE MODEL	WIDTH (mm)	HEIGHT (mm)	MAXIMUM LOAD CAPACITY (kg)
ZM2	1190	981	2500/4500

ZM3 - ZM3 3TL carriage*

CARRIAGE MODEL	WIDTH (mm)	HEIGHT (mm)	MAXIMUM LOAD CAPACITY (kg)
ZM3	1190	706	4500/7500
ZM3 3TL	1190	706	4500/7500

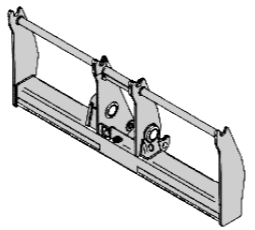
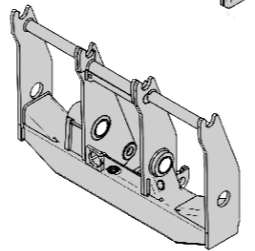
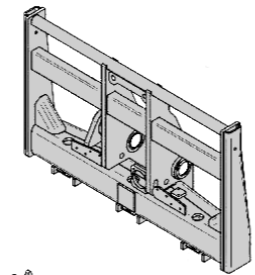
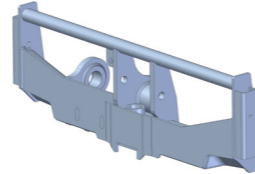
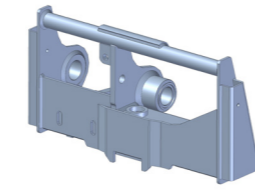
*Triple Tac-Lock

ZM4 carriage

CARRIAGE MODEL	WIDTH (mm)	HEIGHT (mm)	MAXIMUM LOAD CAPACITY (kg)
ZM4	1360	948	8000/12000

ZM4 XL carriage

CARRIAGE MODEL	WIDTH (mm)	HEIGHT (mm)	MAXIMUM LOAD CAPACITY (kg)
ZM4 XL	2315	948	8000/12000



Machine ranges

COMPACT TELEHANDLERS	MEDIUM CAPACITY TELEHANDLERS	STABILISED TELEHANDLERS	HIGH CAPACITY TELEHANDLERS	ROTATING TELEHANDLERS	TELESCOPIC TRACTORS
ZM2S	ZM2	ZM2	ZM3	ZM2	ZM2
EW25.5-60	TF35.7-140	P30.10	TF50.8T-170-HF	ROTO 40.16	MF34.7-140
EW25.5-90	TF35.7CS-140	P30.10L	TF50.8TCS-170-HF	ROTO 40.16S	MF34.7CS-140
	TF33.9-140	P35.11	TF50.8TCS-170-CVT-HF	ROTO 40.18	MF34.7CS-140-CVT
	TF33.9CS-140	TF35.11TT-145	TF45.11T-170-HF	ROTO 40.18S	MF34.9-140
P27.6PLUS	TF42.7-116	P40.12	TF45.11TCS-170-HF	ROTO 50.21	MF34.9CS-140
P27.6TOP	TF42.7-136	P40.12 PLUS	TF45.11TCS-170-CVT-HF	ROTO 50.21S	MF34.9CS-140-CVT
TF27.6	TF42.7CS-116	P40.13	TF45.11TCS-170-CVT-HF	ROTO 50.21S PLUS	MF44.7CS-170-CVT
P30.7	TF42.7CS-136	P40.13 PLUS	TF65.9T-170-HF	ROTO 50.26	MF44.9CS-170-CVT
P30.7L	TF42.7CS-145-CVT	P40.13CS TOP	TF65.9TCS-170-HF	ROTO 50.26S	
TF30.7	TF42.7TT-136	P40.14	TF65.9TCS-170-CVT-HF	ROTO 50.26S PLUS	
TF30.7L	TF42.7TT CS-136	P40.14 PLUS	P72.10 Plus	ROTO 50.30S	
P30.10	TF42.7TT CS-145-CVT	P40.14CS TOP	P50.18HM	ROTO 50.30S PLUS	
P30.10L	TF38.10-116	P40.17	P65.14HM	ROTO 50.35S PLUS-CVT	
TF30.7CS	TF38.10-136	P40.17 PLUS	ZM4	ZM3	
TF33.7-G	TF38.10 CS-116	P40.17CS TOP	P120.10HM	ROTO 70.24S	
TF33.7-115	TF38.10 CS-136	ZM3		ROTO 70.24S PLUS	
TF33.7-LG	TF38.10 CS-145-CVT	P50.17 PLUS		ROTO 70.28S PLUS-CVT	
TF33.7-115L	TF38.10TT-136	P50.17 TOP			
TF30.9-G	TF38.10TT CS-136	P50.18 PLUS			
TF30.9-115	TF38.10TT CS-145-CVT	P50.18CS TOP			
TF30.9-LG					
TF30.9-115L					

Tac-Lock

Tac-Lock: implement hydraulic locking system operated from the cab



Standard Tac-Lock



Triple Tac-Lock



ZM4 Tac-lock

Key

ABBREVIATIONS	
Compact Telehandlers	COMP
Medium Capacity Telehandlers	MC
Telescopic tractors	MF
Stabilised telehandlers	STAB
High capacity telehandlers	HC
Rotating telehandlers	ROTO

APPLICATIONS	
	Agriculture
	Construction
	Industry
	Ecology

SYMBOLS	
●	applicable
-	not applicable

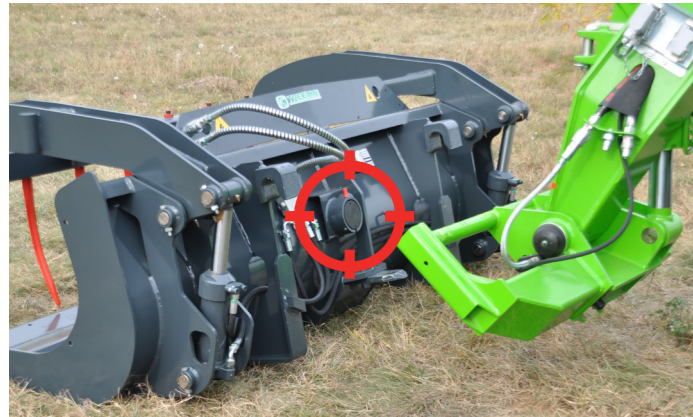
ATTENTION: This information is for guidance only and in no way does it authorise the combination of the attachment with the machine model mentioned. Consult the user and maintenance manual of the telehandler for a list of authorised matching attachments.

Merlo precision and technology

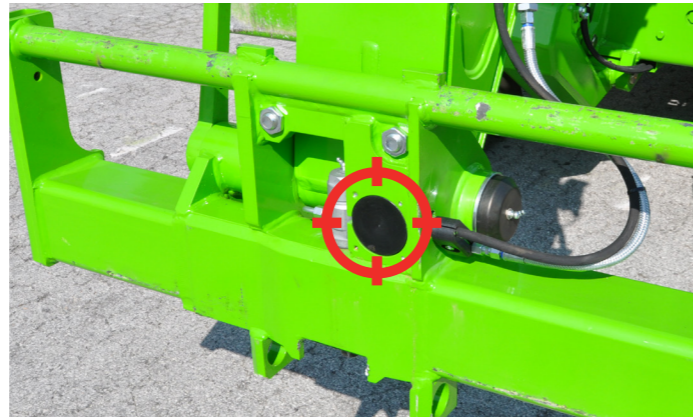
Dynamic load control

For the Merlo Group, safety is an absolute value: this is why the exclusive new generation Merlo ASCS (Adaptive Stability Control System) has been designed. The purpose of this technology is to allow the operator to work in total safety, making the most of the telescopic handler's potential and the attachment used.

Automatic attachment recognition



Sensor located on attachment



Sensor located on carriage

The Merlo ASCS system allows the telehandler:

- to recognise the mounted attachment by automatically calibrating the vehicle's behaviour and reaction parameters. Thanks to specific load diagrams, the Merlo ASCS system is therefore able to maximise machine stability and adapt boom movements to the specific working situation;
- to analyse the values received from the load sensor, by determining, in real time, the actual capacity of the machine.

The operator can check the dynamic balance of the machine at any time, thanks to the traffic light on the front upright. In the case of manoeuvres that could jeopardise the stability of the telehandler, the ASCS will first slow down and then block all movements that could compromise the safety of the operator and the vehicle, while any other movements being still possible. Once the attachment family has been selected, the ASCS system will determine the appropriate load diagram for the specific machine/attachment configuration.

For works with bucket, the EN15000 standard allows the intervention limits of the safety systems to be modified in order to allow smoother and simpler working with such attachments. The Merlo ASCS system with retracted and low boom will therefore have working parameters that will allow more efficient work, guaranteeing smoother movements than those before the introduction of the ASCS system. All information is displayed on the LCD screen, allowing the operator to use the telescopic handler simply and safely. The system is able to recognise all the attachments produced by TreEmme.



Index

Forks

Forks and fork holders - Merlo	6
Forks and fork holders - FEM	7
Fork positioner	8
Carriage ZM4 XL with fork positioner	9
FEM fork holder carriage with positioner - hydraulic side-shift	10

Skips

Concrete mixer	11
Digging bucket	12
Re-handling bucket	13
Bulk material bucket	14
Strengthened bulk material bucket	15
Bulk material bucket with increased reversing travel	16
Multipurpose bucket (4x1)	17
Multipurpose bucket with grab	18
Bucket with silage claw	19
Bucket with hydraulic hatch	20
Waste loader	21
Push blade	22

Forks and clamps

Fork for manure/straw with grab	23
Three-spike folding fork for straw bales	24
Four-spike fork for straw bales with sliding protection	25
Bale fork with grab	26
Handler for single round bale	27
Handler for double round bale	28

Hooks

Lifting boom	29
Telescopic lifting boom	30
Fly jib	31
Fly jib with winch	32
Towing hook on carriage	33
Container hook	34
Big Bag handler	35
Winch on carriage	36
Carriage winch support	37

Aerial work platforms

Fixed width platform	38
Fixed width slewing platform	39
Extensible slewing aerial work platform	40
Extensible slewing aerial work platform	41
Front-opening slewing aerial work platform	42
Extendible slewing aerial work platform with front loading	43
Space aerial work platform	44
Three-sided aerial work platform with top protection	45
Slewing aerial work platform for tunnels	46

Special

Bricks handler	47
Materials container	48
Double log clamp	49
Log clamp	50
Pipe handler	51
Tyre handler	52
Cylinder handler	53
Drum clamp	54
Tunnel ring holder boom	55
Fruit tree shaker	56
Sweeper	57
Combined snow sweeper	58



Forks and fork holders - Merlo

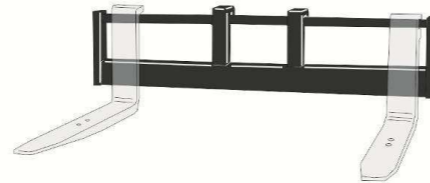
Standard forks

COMMERCIAL REF.		ZM	WEIGHT (kg)	LENGTH (mm)	MAXIMUM CAPACITY (kg)
TWIN	SINGLE		SINGLE	SINGLE	SINGLE
A0326	A0326.1	ZM2S	61	1200	2000-2500
A0300	A0300.1	ZM2	77	1200	1450-1750
A0311	A0311.1	ZM2	87	1200	2500-2250
A0327	A0327.1	ZM2	89	1200	2500-2250
A0302	A0302.1	ZM3	143	1200	3000
A0323	A0323.1	ZM3	143	1200	3750
A0305	A0305.1	ZM4	290	1800	5000-6000
A0322	A0322.1	ZM4	290	1800	5000-6000



Extra wide fork carriage

COMMERCIAL REF.	ZM	WEIGHT (kg)	WIDTH (mm)	MAXIMUM CAPACITY (kg)
A0100	ZM2	140	1895	4500
A0101	ZM3	175	1920	7500



Floating forks carriage

COMMERCIAL REF.	ZM	WEIGHT (kg)	WIDTH (mm)	MAXIMUM CAPACITY (kg)
A0299	ZM2S - ZM2	250	1200	3000
NEW A0293**	ZM2	220	1200	1500
NEW A0294**	ZM2	230	1200	1500
A0291	ZM2	290	1200	4500
A0292	ZM2	305	1200	4500
A0291A*	ZM2	320	1200	4500
A0292A*	ZM2	336	1200	4500
A0298	ZM3	480	1200	7500

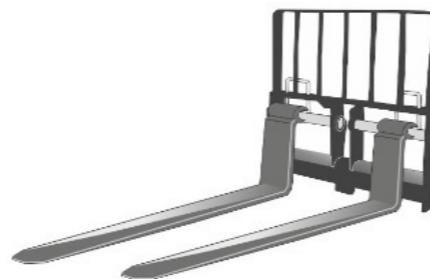
* Type-approved for road use

** Narrow forks



Carriage with extra long forks

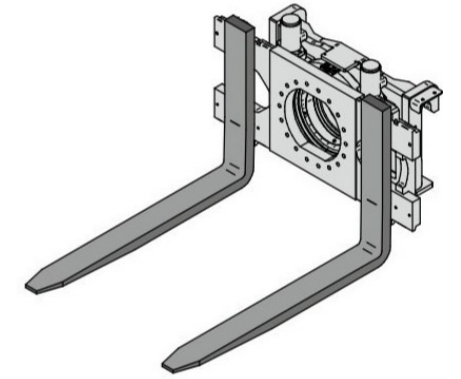
COMMERCIAL REF.	ZM	WEIGHT (kg)	WIDTH (mm)	LENGTH (mm)	MAXIMUM CAPACITY (kg)
				SINGLE	
A0609	ZM2S - ZM2	310	1200	2000	1800
A0606	ZM2	420	1200	2400	1800
A0605	ZM2	410	1200	2000	2200
A0608	ZM3	640	1210	2400	2700
A0607	ZM3	580	1210	2000	3200



Forks and fork holders - Merlo

Rotating forks carriage

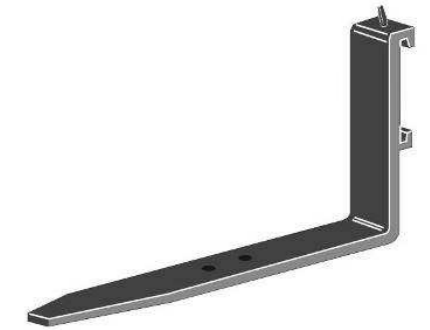
COMMERCIAL REF.	FEM COUPLING	ZM	WEIGHT (kg)	WIDTH (mm)	ROTATION (°)	MAXIMUM CAPACITY (kg)
NEW A3218		ZM2S	370	1000	360	2500
A3215	III	ZM2	550	1200	360	3500
A3216	IV	ZM3	1015	1760	360	5000



Forks and fork holders - FEM

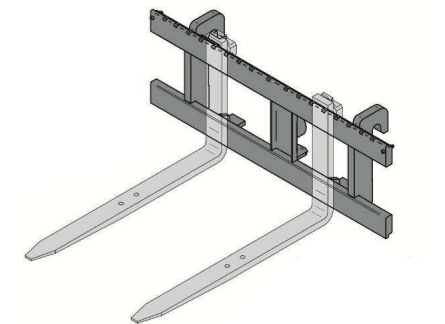
FEM Forks

COMMERCIAL REF.		FEM COUPLING	WEIGHT (kg)	LENGTH (mm)	MAXIMUM CAPACITY (kg)
TWIN	SINGLE		SINGLE	SINGLE	SINGLE
NEW A0501	A0501.1	II	60	1200	1250
A0500	A0500.1	III	83	1200	2150
A0520	A0520.1	IV	130	1200	3000
A0524	A0524.1	IV	162	1200	3600
A0525	A0521.1	IV	131	1200	3750
A0521	A0521.1	V	226	1200	5000



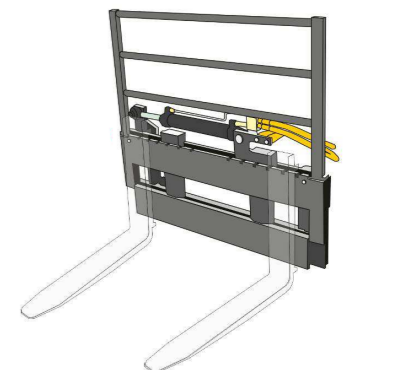
Fork carriage - FEM

COMMERCIAL REF.	FEM COUPLING	ZM	WEIGHT (kg)	WIDTH (mm)	MAXIMUM CAPACITY (kg)
A0198	II	ZM2S - ZM2	550	1500	2500
A0242	IV	ZM3	820	2400	2700
A0200	III	ZM2	145	1500	4500
A0201	III	ZM2	156	1500	4500
A0210	III	ZM2	185	2000	4500
A0211	III	ZM2	190	2000	4500
A0230	IV	ZM3	310	1500	7500
A0240	IV	ZM3	355	1800	7500
A0245	V	ZM4	515	2400	10000



Fork side-shift on standard carriage

COMMERCIAL REF.	FEM COUPLING	ZM	WEIGHT (kg)	WIDTH (mm)	SHIFT (mm)	MAXIMUM CAPACITY (kg)
A0281	III	ZM2	410	1355	+/- 154	4000
A0282	III	ZM2	380	1355	+/- 154	4000
A0283	IV	ZM3	560	1355	+/- 154	7000





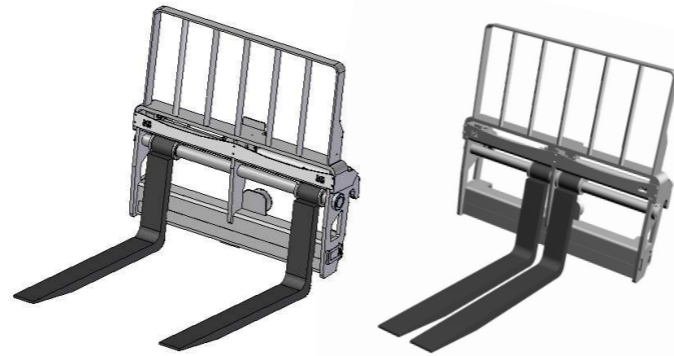
Fork positioner



Automatic fork positioner on carriage

FEATURES

- It allows safe fork positioning
- It can be applied to ZM2 and ZM3 carriages
- It ensures utmost versatility of use
- Hydraulic actuator



COMMERCIAL REF.	ZM	WEIGHT (kg)	WIDTH (mm)	MAXIMUM CAPACITY (kg)
A0270C	ZM2S - ZM2	315	1200	4500
A0271	ZM2	315	1200	4500
A0272	ZM3	500	1200	7500

REQUIREMENTS	OPTIONS	LIMITS
-	-	-

Carriage ZM4 XL with fork positioner



Automatic fork positioner on ZM4 XL

FEATURES

- It allows safe fork movement
- ZM4 extra wide carriage
- Option that can only be sold on a new machine (replaces standard ZM4 carriage)
- Hydraulic actuator



COMMERCIAL REF.	ZM	WEIGHT (kg)	MIN-MAX WIDTH (mm)	FORK LENGTH (mm)	MAXIMUM CAPACITY (kg)
V2250	ZM4 XL	290	454-2315	1800	11500

REQUIREMENTS	OPTIONS	LIMITS
-	The kit V2250 includes extra wide carriage with fork positioner. Some attachments may not be compatible with the Extra wide carriage (A0245, A0521, A2201, A0305)	-



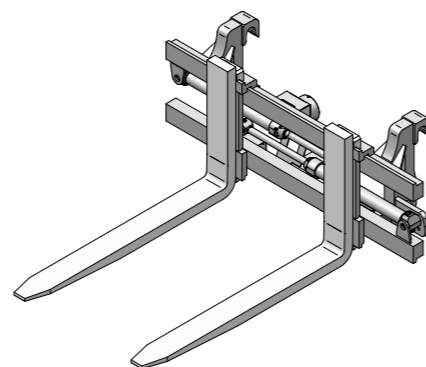
FEM fork holder carriage with positioner - hydraulic side-shift



Positioner - Side-shift Automatic fork positioner on carriage

FEATURES

- It allows safe fork positioning and movement
- It can be applied to ZM2 and ZM3 carriages
- It ensures utmost versatility of use
- Hydraulic actuators



COMMERCIAL REF.	FEM COUPLING	ZM	WEIGHT (kg)	FORK LENGTH (mm)	WIDTH (mm)	MAXIMUM CAPACITY (kg)
NEW A0278	II	ZM2S	280	1085	1200	2500
NEW A0277	III	ZM2	480	1550	1200	4500
NEW A0277A*	III	ZM2	470	1550	1200	4500
NEW A0277B*	III	ZM2	490	1550	1800	4500

*Full Taper Forks

REQUIREMENTS	OPTIONS	LIMITS
-	-	-

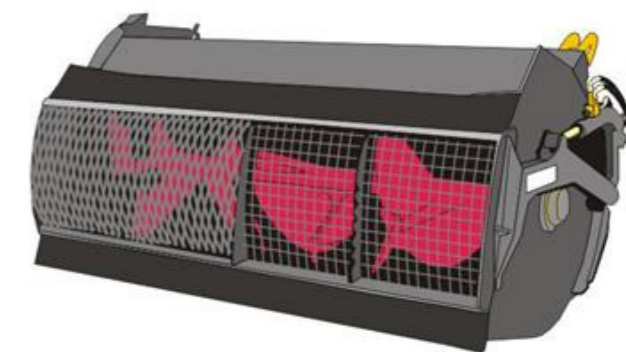
Concrete mixer



Designed for mixing and handling concrete having a maximum thickness of 2500 kg/m³

Features

- Door hydraulic opening and closing also possible via radio control
- Hydraulically-controlled helix protection grille, with automatic closing device
- Wear-resistant steel helix that can be replaced
- Swivelling chute for concrete unloading



COMMERCIAL REF.	WEIGHT (kg)	WIDTH (mm)	CAPACITY (l)	MAXIMUM CAPACITY (kg)	MACHINE RANGE					
					COMP	MC	MF	STAB	HC	ROTO
A1565	690	1060	350	875	●	●	●	●	-	-
A1570	750	1710	500	1250	●	●	●	●	-	-
A1571	750	1710	500	1250	-	-	-	-	-	●
A1580	880	2225	750	1875	●	●	●	●	-	-
A1581	880	2225	750	1875	-	-	-	-	-	●
A1582	1020	2225	750	1875	-	-	-	-	●	●
A1583	1020	2225	750	1875	-	-	-	-	●	-

REQUIREMENTS	OPTIONS	LIMITS
Services oil continuous delivery	Extension chute (1,5m), flexible unloading hose (1,5m), radio control	-



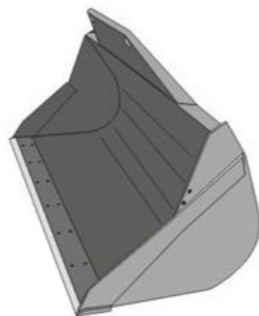
Digging bucket



Ideal for digging and handling material having a maximum density of 2250 kg/m³

FEATURES

- Monocoque body for increased strength
- Provided with front blade protection for road use
- Bucket edge and wearing blade having 530HB hardness
- Side reinforcement blades



COMMERCIAL REF.	WEIGHT (kg)	WIDTH (mm)	CAPACITY* (l)	MAXIMUM CAPACITY (kg)	MACHINE RANGE					
					COMP	MC	MF	STAB	HC	ROTO
A0697	280	1700	500	1125	●	-	-	-	-	-
A0699	300	1840	550	1250	●	-	-	-	-	-
A0741	355	2240	750	1680	-	-	-	●	-	-
A0700	360	2000	800	1800	●	-	-	-	-	●
A0708	380	2150	850	1900	●	-	-	●	-	-
A0698	370	2100	850	1910	●	●	-	●	-	-
A0701	400	2240	900	2025	●	●	●	●	-	●
A0706	430	2440	1000	2250	-	-	●	●	-	●
A0707	400	2440	1000	2250	-	-	-	-	●	●
A0704**	565	2440	1200	2700	-	-	-	-	●	●
A0703	910	2440	1800	4050	-	-	-	-	●	-

**Triple Tac-Lock

*Capacity when heaped

REQUIREMENTS	OPTIONS	LIMITS
-	Teeth, wearing blade	-



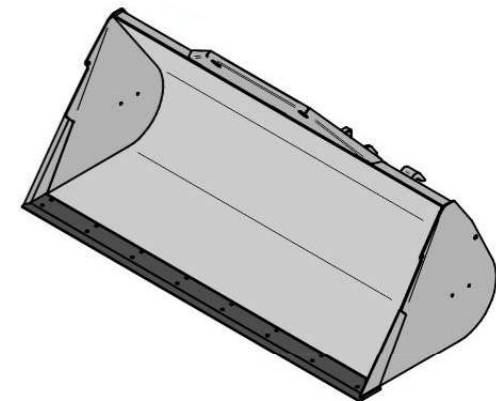
Re-handling bucket



Bucket designed for handling materials having a maximum density of 1800 kg/m³

FEATURES

- Suitable to level, turn over, handle
- Monocoque body with external reinforcements for increased strength
- Provided with front blade protection for road use
- Bucket edge and wearing blade having 530HB hardness



COMMERCIAL REF.	WEIGHT (kg)	WIDTH (mm)	CAPACITY* (l)	MAXIMUM CAPACITY (kg)	MACHINE RANGE					
					COMP	MC	MF	STAB	HC	ROTO
NEW A0724	400	2000	1100	1980	●	-	-	-	-	-
A0710	390	2240	1250	2250	●	●	●	●	-	●
A0712	410	2400	1350	2430	●	●	●	●	-	●
A0717	710	2500	1800	3240	-	-	-	-	●	●

*Capacity when heaped

REQUIREMENTS	OPTIONS	LIMITS
-	Teeth, wearing blade	-



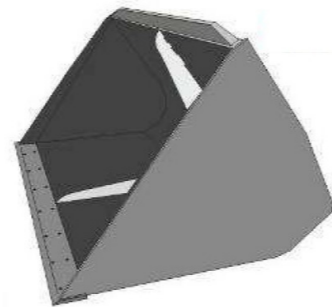
Bulk material bucket



Bucket designed for handling bulk material having a maximum density of 900 kg/m³

FEATURES

- Ideal for bulk materials
- Monocoque body with external reinforcements for increased strength
- Sides with steel ribs
- Bolted double-edged wearing blade available



COMMERCIAL REF.	WEIGHT (kg)	WIDTH (mm)	CAPACITY* (l)	MAXIMUM CAPACITY (kg)	MACHINE RANGE					
					COMP	MC	MF	STAB	HC	ROTO
A0723	425	1700	1400	1260	●	-	-	-	-	-
A0716	435	1840	1500	1350	●	-	-	-	-	-
A0713	435	2000	1700	1530	●	-	-	-	-	-
A0714	485	2240	1800	1620	●	●	●	●	-	●
A0718	460	2100	1900	1710	●	●	●	●	-	-
A0720	490	2400	2000	1800	●	●	●	●	-	●
A0720A	541	2400	2000	1800	●	●	●	●	-	●
A0720B***	545	2400	2000	1800	-	-	-	-	-	-
A0780	605	2400	2500	2250	●	●	●	●	-	●
A0782	695	2500	3000	2700	-	●	●	●	-	●
A0781**	740	2500	2500	2250	-	-	-	-	●	●
R2200**	890	2500	3000	2700	-	-	-	-	●	●
A0785	1100	2500	3500	3150	-	-	-	-	●	-
A0786	1400	2500	5000	4500	-	-	-	-	●	-

*Capacity when heaped **Triple Tac-Lock ***With rear protection grille

REQUIREMENTS	OPTIONS	LIMITS
-	Teeth, wearing blade	-



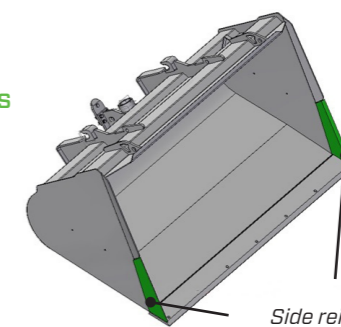
Strengthened bulk material bucket



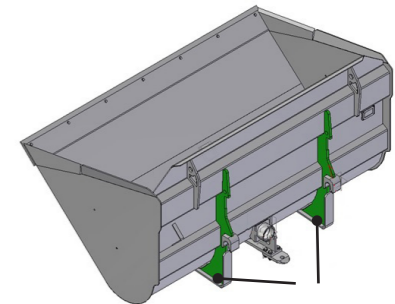
Strengthened bulk material bucket for exceptional performance

FEATURES

- Unbelievably versatile bucket, suitable for countless applications
- Strengthened bucket structure compared to standard bulk material bucket
- It allows a more convenient handling of bulk materials thanks to an increased angle of attack
- Double-edged wearing blade for greater longevity



Side reinforcements with wear-resistant material



Reinforced connection to carriage

COMMERCIAL REF.	WEIGHT (kg)	WIDTH (mm)	CAPACITY (l)	MAXIMUM CAPACITY (kg)	MACHINE RANGE					
					COMP	MC	MF	STAB	HC	ROTO
A0730	556	2050	1500	1350	●	-	-	-	-	-
A0731	660	2250	1800	1620	●	●	●	●	-	●
A0732	670	2400	1800	1620	●	●	●	●	-	●
A0733	715	2400	2000	1800	●	●	●	●	-	●
A0734	763	2400	2200	1980	-	●	●	●	-	-
A0735	805	2500	2500	2250	-	●	●	●	-	-
A0736	805	2500	2500	2250	-	-	-	-	●	-
A0737	860	2500	3000	2700	-	-	-	-	●	-
A0738	984	2500	3500	3150	-	-	-	-	●	-

REQUIREMENTS	OPTIONS	LIMITS
-	-	-



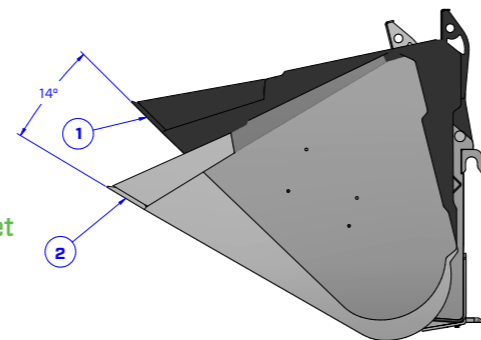
Bulk material bucket with increased reversing travel



Bucket designed to handle bulk material, featuring a strengthened structure and increased unloading capacity

FEATURES

- Reversing travel increased by 14 degrees for increased load capacity
- Ideal for bulk materials
- Strengthened bucket structure compared to standard bulk material bucket
- Double-edged wearing blade for greater longevity



1) COMMERCIAL REF. **A0737**
2) COMMERCIAL REF. **22S510**

COMMERCIAL REF.	WEIGHT (kg)	WIDTH (mm)	CAPACITY (l)	MAXIMUM CAPACITY (kg)	COMP	MC	MACHINE RANGE				ROTO
							MF	STAB	HC		
22S510	860	2500	3000	2700	-	-	-	-	●	-	

REQUIREMENTS	OPTIONS	LIMITS
-	-	-



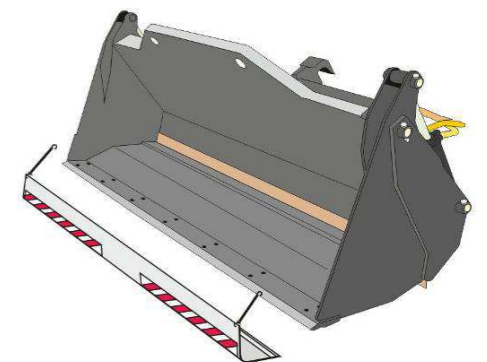
Multipurpose bucket (4x1)



Attachment ideal for several kinds of processes: digging (max. density 2250 kg/m³), rehandling (max. density 1800 kg/m³), handling bulk materials (max. density 900 kg/m³)

FEATURES

- Suitable to level, push, dig, handle
- Mobile part for unloading on trucks and trailers
- Standard Triple Tack Lock (excluding A0810)
- Provided with front blade protection for road use



COMMERCIAL REF.	WEIGHT (kg)	WIDTH (mm)	BLADE WIDTH (mm)	CAPACITY* (l)	MAXIMUM CAPACITY (kg)	MACHINE RANGE					
						COMP	MC	MF	STAB	HC	ROTO
DIGGING BUCKET											
A0809	610	1765	1700	500	1130	●	-	-	-	-	-
A0810	630	1905	1840	600	1350	●	-	-	-	-	-
A0800	720	2305	2240	800	1800	●	●	●	●	●	●
A0820	780	2305	2240	1000	2250	●	●	●	●	●	●
RE-HANDLING BUCKET											
A0870	840	2305	2240	1250	2250	●	●	●	●	●	●
BULK MATERIAL BUCKET											
A0860	1220	2585	2500	3000	2700	-	-	-	-	●	-

*Capacity when heaped

REQUIREMENTS	OPTIONS	LIMITS
-	Teeth (digging only), wearing blade	-



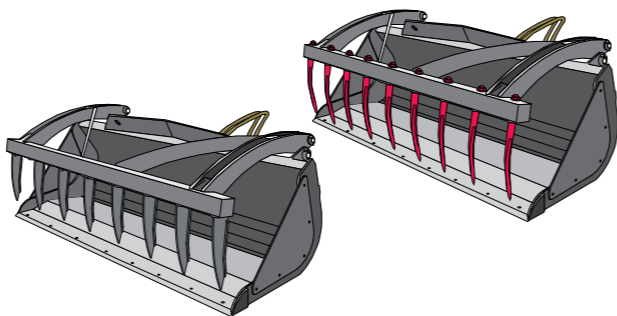
Multipurpose bucket with grab



Bucket designed for handling materials having a maximum density of 1800 kg/m³

FEATURES

- Monocoque body for increased strength
- Removable sides for more volume
- Available with welded or forged teeth with closing flush with or against the wall, to respond to any need for use
- Hydraulically operated grab



COMMERCIAL REF.	WEIGHT (kg)	WIDTH (mm)	CAPACITY (l)	MAXIMUM CAPACITY (kg)	MACHINE RANGE					
					COMP	MC	MF	STAB	HC	ROTO
A0835	497	1840	700	1260	●	-	-	-	-	-
NEW A0836*	497	1840	700	1260	●	-	-	-	-	-
NEW A0841*	570	2000	900	1700	●	●	●	●	-	-
NEW A0840*	605	2240	1000	1900	●	●	●	●	-	-
A0852	595	2100	1100	1980	●	●	●	●	-	-
NEW A0838*	660	2400	1200	2160	●	●	●	●	-	-
NEW A0843*	700	2400	1500	2700	-	●	●	●	-	-
NEW A0846*	804	2400	2350	4230	-	-	-	-	●	-

A0837 Side panels for A0836

A0847 Side panels for A0846

A0848 Side spikes

Removable side panels to facilitate their replacement in case of wear

Warning: the weight changes depending on the selected teeth. Indicated is the forged teeth weight

* Available in a version with welded teeth

REQUIREMENTS	OPTIONS	LIMITS
-	Wearing blade	-



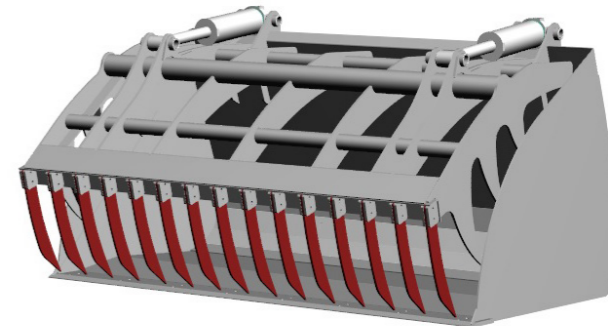
Bucket with silage claw



Bucket for silage, 3000 litre capacity

FEATURES

- Best output for silage agricultural applications
- Bucket structure designed for safely handling the material
- Teeth specifically designed for silage scraping operations
- Grab designed to ensure strength and light weight



COMMERCIAL REF.	WEIGHT (kg)	WIDTH (mm)	CAPACITY (l)	MAXIMUM CAPACITY (kg)	MACHINE RANGE					
					COMP	MC	MF	STAB	HC	ROTO
12S554	1520	2440	3000	2700	●	●	●	●	-	-

REQUIREMENTS	OPTIONS	LIMITS
-	-	-



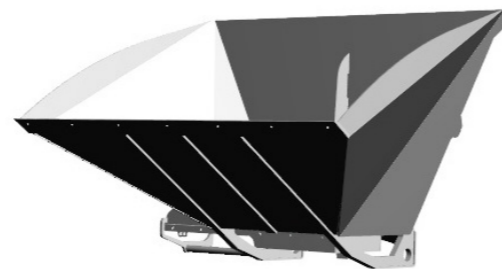
Bucket with hydraulic hatch



Bucket with hydraulic hatch for materials having a maximum density of 900 kg/m³

FEATURES

- Perfect for highly flowing materials
- It allows the operator to quickly empty the bucket avoiding big carriage movements
- Hydraulically-operated opening of the unloading door
- Double-edged wearing blade available either in steel or in rubber



COMMERCIAL REF.	WEIGHT (kg)	WIDTH (mm)	CAPACITY (l)	MAXIMUM CAPACITY (kg)	MACHINE RANGE					
					COMP	MC	MF	STAB	HC	ROTO
A0861	556	2500	2000	1800	●	●	-	●	-	●
A0862	700	2500	2500	2250	-	-	-	-	●	-

REQUIREMENTS	OPTIONS	LIMITS
-	-	-



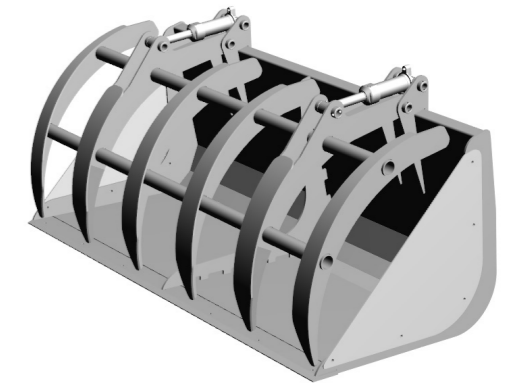
Waste loader



Bucket ideal for handling waste

FEATURES

- Grab designed to safely grab the material
- Ideal for materials having various consistencies
- Strong and resistant structure
- Removable side panels are included



COMMERCIAL REF.	WEIGHT (kg)	WIDTH (mm)	CAPACITY (l)	MAXIMUM CAPACITY (kg)	MACHINE RANGE					
					COMP	MC	MF	STAB	HC	ROTO
A0872	800	2400	2000	1800	●	●	●	●	●	●

REQUIREMENTS	OPTIONS	LIMITS
-	-	-



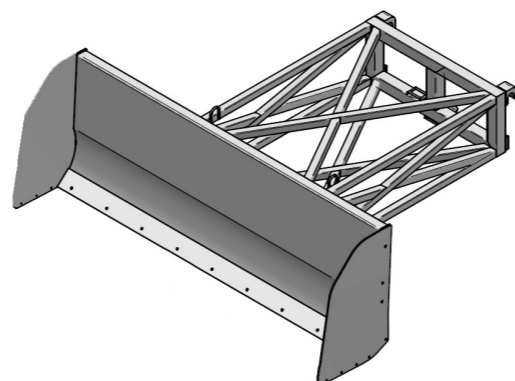
Push blade



Push blade for handling cereals

FEATURES

- Light and versatile implement, which is ideal to easily handle cereals
- Extension chassis designed to ensure minimum overall dimensions and maximum visibility
- Equipped with rubber wearing blade for a smoother sliding movement
- Side ertalon support shoes to avoid damaging the floor



COMMERCIAL REF.	WEIGHT (kg)	BLADE WIDTH (mm)	BLADE HEIGHT (mm)	EXTENSION LENGTH (mm)	MACHINE RANGE					
					COMP	MC	MF	STAB	HC	ROTO
A0905	480	2600	910	1790	●	●	●	●	-	-
A0906	535	2600	910	2500	-	-	-	-	●	-

REQUIREMENTS	OPTIONS	LIMITS
-	-	-



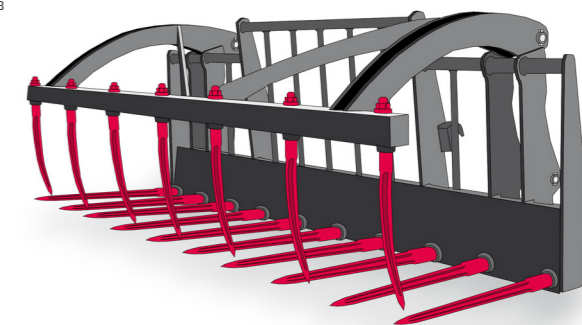
Fork for manure/straw with grab



Designed for handling straw-manure mixtures having a maximum density of 800 kg/m³

FEATURES

- High penetration tips
- Reinforced structure
- Hydraulically operated grab
- On request available without grab



COMMERCIAL REF.	WEIGHT (kg)	WIDTH (mm)	MAXIMUM CAPACITY (kg)	MACHINE RANGE						
				COMP	MC	MF	STAB	HC	ROTO	
WITH GRAB										
A2308	580	2280	2000	●	-	-	-	-	-	-
A2301	518	1945	1500	●	●	●	●	-	-	-
A2307	480	1900	1500	●	-	-	-	-	-	-
A2300	580	2280	2000	●	●	●	●	-	-	-
A2303	600	2280	2000	-	-	-	-	●	-	-
WITH NO GRAB										
A2306	304	2250	2000	●	●	●	●	-	-	-

REQUIREMENTS	OPTIONS	LIMITS
-	Additional side teeth	-



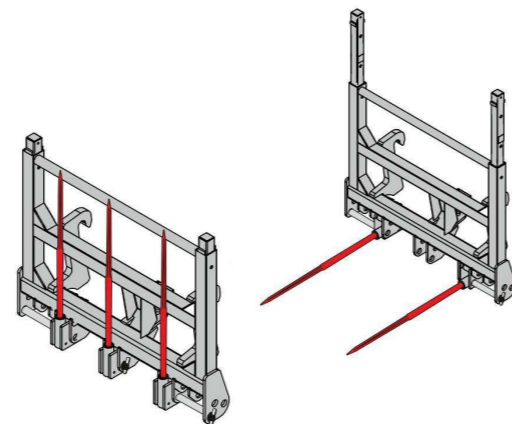
Three-spike folding fork for straw bales



Attachment suitable to handle one or more bales

FEATURES

- Sliding and removable upper protection
- Interchangeable and folding high penetration spikes
- Reinforced structure
- Different spike length depending on the model



COMMERCIAL REF.	WEIGHT (kg)	NO. OF SPIKES	SPIKE LENGTH (mm)	WIDTH (mm)	MAXIMUM CAPACITY (kg)	MACHINE RANGE					
						COMP	MC	MF	STAB	HC	ROTO
A2337	220	2/3	840	1390	1500	●	-	-	-	-	-
A2331	220	3	840	1390	1500	●	●	●	●	-	-
A2332	230	3	1040	1390	1500	●	●	●	●	-	-
A2333	240	3	1220	1390	1500	●	●	●	●	-	-
A2334	220	2	1220	1390	1000	●	●	●	●	-	-
A2336	225	3	1220	1390	1500	-	-	-	-	●	-

REQUIREMENTS

OPTIONS

LIMITS



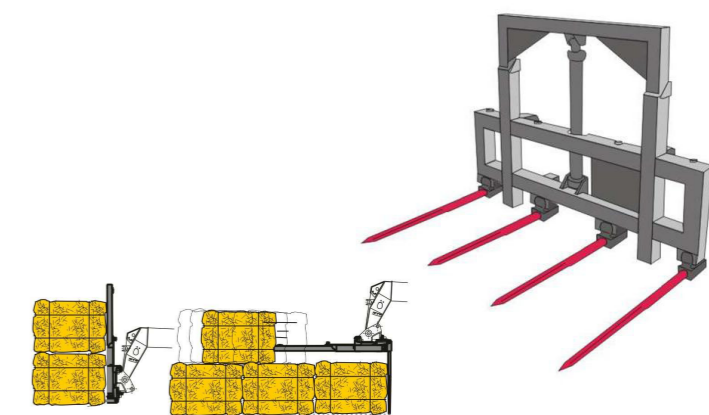
Four-spike fork for straw bales with sliding protection



Attachment suitable to handle one or more bales

FEATURES

- Suitable to store bales up to roof height
- Hydraulically-operated height-adjustable protection
- Interchangeable and folding high penetration spikes
- Protection height 1320 mm to 1900 mm



COMMERCIAL REF.	WEIGHT (kg)	WIDTH (mm)	MAXIMUM CAPACITY (kg)	MACHINE RANGE					
				COMP	MC	MF	STAB	HC	ROTO
A2340	320	1720	1500	●	●	●	●	-	-
A2341	405	1750	4000	-	-	-	-	●	-

REQUIREMENTS

OPTIONS

LIMITS



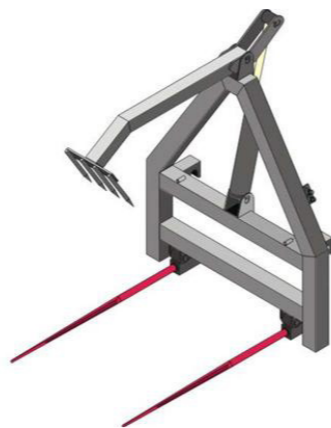
Bale fork with grab



Fork suitable for loading two or more stacked bales, with upper retaining grab with hydraulic positioning

FEATURES

- Interchangeable spikes that can be folded back against the chassis made of high-strength pressed steel
- Conical tips with cross-shaped section for improved penetration into the material
- Spikes with a useful length of 840 and 1240 mm can be supplied on request



COMMERCIAL REF.	WEIGHT (kg)	WIDTH (mm)	MAX. GRAB HEIGHT (mm)	MAXIMUM CAPACITY (kg)	COMP	MC	MACHINE RANGE				ROTO
							MF	STAB	HC		
NEW A2319	240	840	2565	1500	●	●	●	-	-	-	-
A2320	240	1040	2565	1500	●	●	●	●	-	●	-
NEW A2324	240	1240	2565	1500	●	●	●	-	-	-	-

REQUIREMENTS	OPTIONS	LIMITS
-	-	-



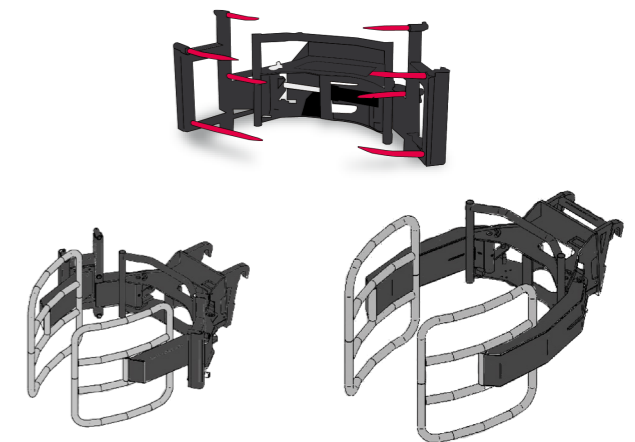
Handler for single round bale



Attachment designed to handle one round bale

FEATURES

- Versions for wrapped and unwrapped bales are available
- Easy transition from wrapped to unwrapped round bales for multi-purpose versions
- Available for various bale dimensions
- Independent closure movements for each side



COMMERCIAL REF.	WEIGHT (kg)	WIDTH (mm)	BALE DIAMETER		MAXIMUM CAPACITY (kg)	COMP	MC	MACHINE RANGE				ROTO
			ØP (m)	ØF (m)				MF	STAB	HC		
A2407	190	1485	1.2-2	-	1200	●	●	●	●	●	-	-
A2408	270	1495	1.2-2	1.4-1,5	1200	●	●	●	●	●	-	-
A2405	323	1495	1.2-2	1.4-1,8	1200	●	●	●	●	●	-	-
A2402	210	1215	-	1.4-1,5	1000	●	●	●	●	●	-	-
A2406	240	1200	-	1.4-1,8	1000	●	●	●	●	●	-	-
A2416	225	1485	1.2-2	-	1200	-	-	-	-	●	-	-
A2418	335	1495	1.2-2	1.4-1,8	1200	-	-	-	-	●	-	-
A2419	300	1495	-	1.4-1,8	1000	-	-	-	-	●	-	-

ØP: unwrapped bale

ØF: wrapped bale

REQUIREMENTS	OPTIONS	LIMITS
-	-	-



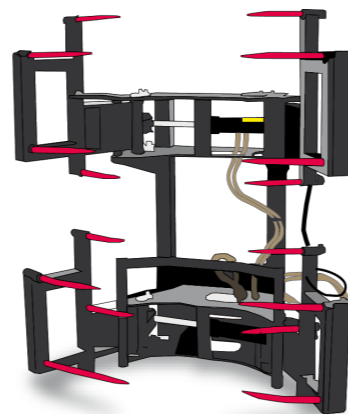
Handler for double round bale



Attachment designed to handle one or two unwrapped round bales

FEATURES

- Possibility to control the handlers simultaneously or independently* (only on preset machines)
- Possibility to handle 1 or 2 bales at a time
- Light and resistant structure
- Independent closure movements for each side



COMMERCIAL REF.	WEIGHT (kg)	WIDTH (mm)	BALE DIAMETER		MAXIMUM CAPACITY (kg)	COMP	MC	MACHINE RANGE			
			ØP (m)	ØF (m)				MF	STAB	HC	ROTO
A2413	390	1485	1.2-2	-	1200	●	●	●	●	-	-
A2413A	390	1495	1.2-2	-	1200	●	●	●	●	-	-
A2417	400	1485	1.2-2	-	1200	-	-	-	-	●	-

ØP: unwrapped bale

ØF: wrapped bale

REQUIREMENTS

* Arrangement for second hydraulic function

OPTIONS

LIMITS



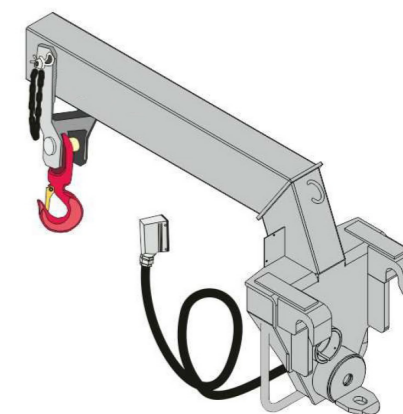
Lifting boom



Attachment ideal to handle overhanging suspended loads

FEATURES

- Type-approved hook, equipped with safety tab, swivelling over 360°
- Ideal for nursery gardening
- Standard load limiter
- Strong structure



COMMERCIAL REF.	WEIGHT (kg)	WIDTH (mm)	LENGTH* (mm)	MAXIMUM CAPACITY (kg)	COMP	MC	MACHINE RANGE			
							MF	STAB	HC	ROTO
A1124C	125	495	1335	1500	●	-	-	-	-	-
A1124B	125	495	1335	1500	●	-	-	-	-	-
A1118B	125	495	1335	2200	●	●	●	●	-	●
A1119B	190	550	1340	3500	-	-	-	-	●	●
A1129B	415	570	1780	6000	-	-	-	-	●	-

*distance between carriage and hook centre

REQUIREMENTS

OPTIONS

LIMITS



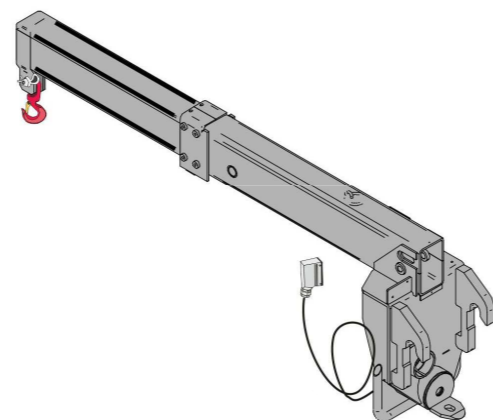
Telescopic lifting boom



Attachment designed to handle overhanging suspended loads

FEATURES

- Type-approved hook, equipped with safety tab, swivelling over 360°
- Ideal for nursery gardening
- Standard load limiter
- Extensible boom (725 mm)



COMMERCIAL REF.	WEIGHT (kg)	WIDTH (mm)	LENGTH* (mm)	MAXIMUM CAPACITY (kg)	MACHINE RANGE					
					COMP	MC	MF	STAB	HC	ROTO
A1123B	220	475	1445	1500	-	●	●	●	-	●
A1127B	346	480	1650	2200	-	●	-	●	●	●

*distance between carriage and hook centre

REQUIREMENTS	OPTIONS	LIMITS
-	-	-

Fly jib



Ideal for lifting, handling and positioning suspended loads

FEATURES

- Lightweight and high rigidity trellis structure
- Type-approved hook, equipped with safety tab, swivelling over 360°
- Standard load limiter
- Available in a number of different lengths



COMMERCIAL REF.	WEIGHT (kg)	WIDTH (mm)	LENGTH* (mm)	MAXIMUM CAPACITY (kg)	MACHINE RANGE					
					COMP	MC	MF	STAB	HC	ROTO
A1230C	125	400	3225	400	●	-	-	-	-	-
A1230B	125	400	3225	400	●	-	-	-	-	-
A1225B	185	460	5000	500	-	-	-	-	-	●
A1200B	112	400	3225	600	●	●	●	●	-	●
A1220B	148	450	3710	900	-	-	-	-	●	●
A1210B	120	440	1910	1500	●	●	●	●	-	●
A1221B	135	450	2000	2000	-	-	-	-	-	●

*distance between carriage and hook centre

REQUIREMENTS	OPTIONS	LIMITS
-	Equipment for handling the fly jib	-



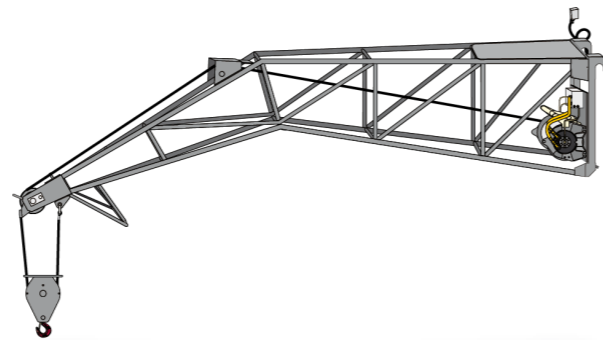
Fly jib with winch



Ideal for lifting, handling and positioning suspended loads

FEATURES

- Rope block with type-approved hook, equipped with safety tab, swivelling over 360°
- Lightweight and high rigidity trellis structure
- Hook available with different travel lengths, depending on the model
- Standard load limiter



COMMERCIAL REF.	WEIGHT (kg)	LENGTH (mm)	MAX. HOOK TRAVEL (m)	MAXIMUM CAPACITY (kg)	MACHINE RANGE					
					COMP	MC	MF	STAB	HC	ROTO
A1330C	215	3535	28	400	●	-	-	-	-	-
A1330B	215	3535	28	400	●	-	-	-	-	-
A1300B	205	3535	28	600	●	●	●	●	-	●
A1310B	288	1975	30	1500	●	●	●	●	-	●
A1320B	305	3865	23	900	-	-	-	-	●	●
A1215B	290	1550	35	2000	-	-	-	●	-	●
A1321B	330	2000	35	2000	-	-	-	-	●	●

REQUIREMENTS	OPTIONS	LIMITS
-	Equipment for handling the fly jib	-



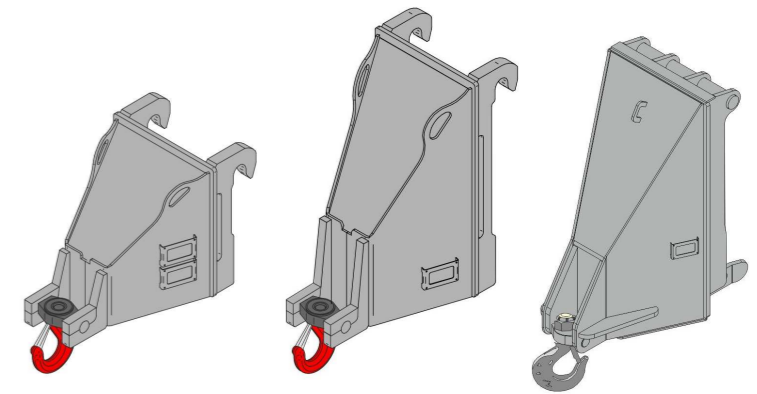
Towing hook on carriage



Attachment designed to lift and handle suspended loads

FEATURES

- Ideal for industry and construction applications
- Type-approved hook, equipped with safety tab, swivelling over 360°
- Compact attachment
- Possibility to reach the maximum capacity of the machine



COMMERCIAL REF.	WEIGHT (kg)	LENGTH* (mm)	MAXIMUM CAPACITY (kg)	MACHINE RANGE					
				COMP	MC	MF	STAB	HC	ROTO
A1000	100	560	5000	●	●	●	●	-	●
A1001	148	560	7500	-	-	-	-	●	●
A1003	320	675	12000	-	-	-	-	●	-

*distance between carriage and hook centre

REQUIREMENTS	OPTIONS	LIMITS
-	-	-



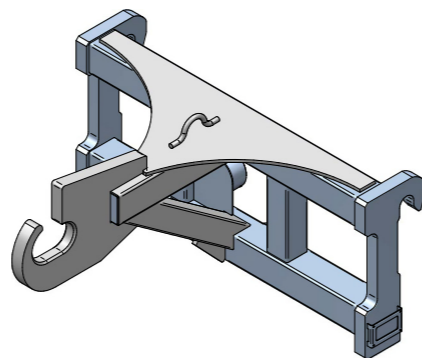
Container hook



Attachment designed to lift and handle swap body containers

FEATURES

- Ideal for ecology applications
- Designed for swap body hooks having a diameter of 50 - 60 mm
- Wear-resistant steel hook 450 HB
- Possibility to reach the maximum capacity of the machine



COMMERCIAL REF.	WEIGHT (kg)	LENGTH (mm)	MAXIMUM CAPACITY (kg)	MACHINE RANGE					
				COMP	MC	MF	STAB	HC	ROTO
22S508	165	650	5000	●	●	●	●	-	●

REQUIREMENTS	OPTIONS	LIMITS
-	-	-



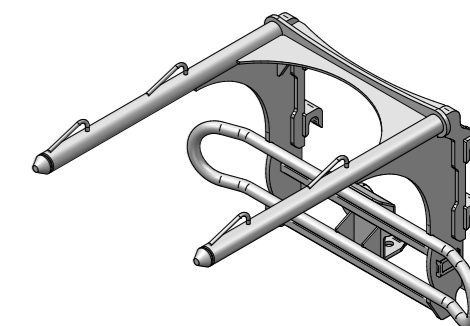
Big Bag handler



Attachment designed to lift and handle big bags using 1, 2 or 4 hooks

FEATURES

- Tubular structure to avoid the risk of damaging the big bags
- Presence of 4 stops to prevent slipping during manoeuvring
- Raised coupling structure to prevent damage to the roof of the trailer during loading
- Maximum safety when handling big bags



COMMERCIAL REF.	WEIGHT (kg)	LENGTH (mm)	MAXIMUM CAPACITY (kg)	MACHINE RANGE					
				COMP	MC	MF	STAB	HC	ROTO
A2420	230	1650	2500	●	●	●	●	●	●

REQUIREMENTS	OPTIONS	LIMITS
-	-	-



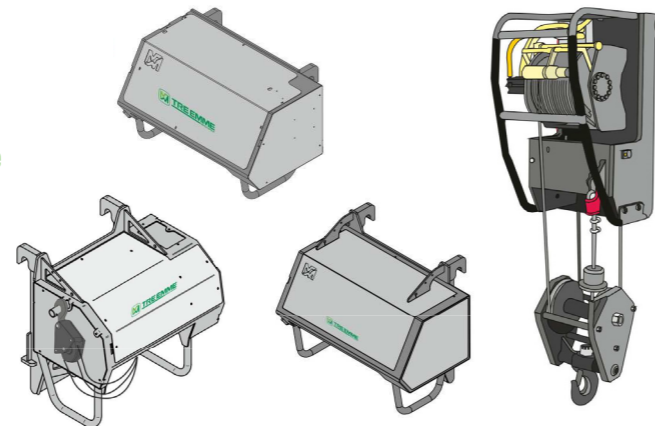
Winch on carriage



Attachment designed to lift suspended loads

FEATURES

- Equipped with pressure roller to ensure wire rope adherence to drum
- Winch support available for carrying it on machine (some models only - option)
- Hook speed between 28 and 11 m/min
- Easy maintenance



COMMERCIAL REF.	WEIGHT (kg)	WIDTH (mm)	MAX. HOOK TRAVEL (m)	MAXIMUM CAPACITY (kg)	MACHINE RANGE					
					COMP	MC	MF	STAB	HC	ROTO
A2765	575	1230	35	4000	●	●	●	●	●	●
A2766	575	1230	35	4500	-	-	-	●	-	●
NEW A2767B	570	1230	16	5000	-	-	-	-	●	●
A2768	606	1230	24/16*	4000/6000*	-	-	-	-	●	●
A2772B	680	1200	13	10000	-	-	-	-	●	-
A2769	600	1230	35-24*	4500-6750*	-	-	-	-	●	●

*double line pull/triple line pull

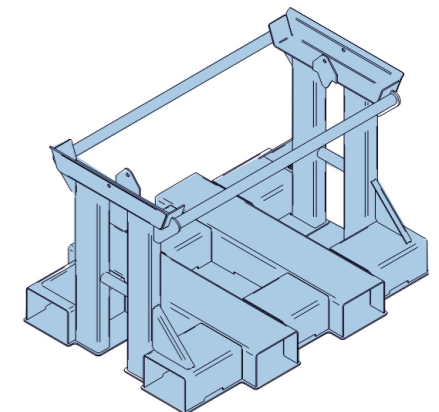
REQUIREMENTS	OPTIONS	LIMITS
-	Equipment for handling the winch (only on selected machine models)	-



Winch support on carriage



Support for all winches on the price list



COMMERCIAL REF.	WEIGHT (kg)	WIDTH (mm)	LENGTH (mm)	COMPATIBILITY	MACHINE RANGE					
					COMP	MC	MF	STAB	HC	ROTO
NEW A2790	100	1060	830	All winches on the price list	●	●	●	●	●	●

REQUIREMENTS	OPTIONS	LIMITS
-	-	-



Fixed width platform



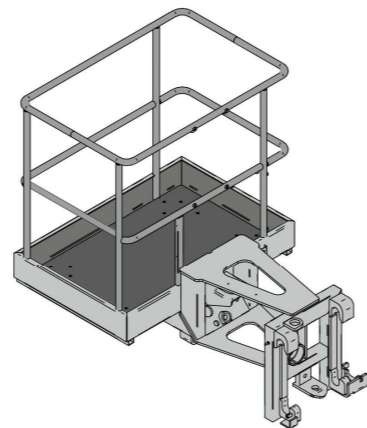
Fixed width slewing platform



Aerial work platform designed to lift 2 persons under safety conditions

FEATURES

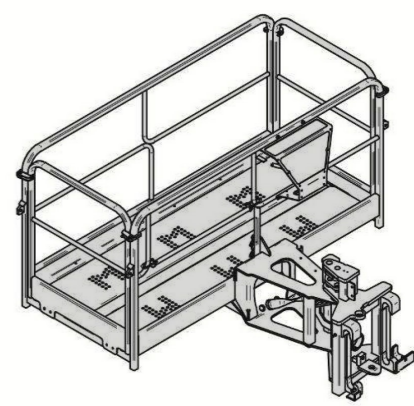
- Maximum safety
- Non-slip floor
- Easy access to the work surface
- Equipped with load detection device featuring pre-alarm and alarm



Aerial work platform designed to lift two/three persons under safety conditions

FEATURES

- Hydraulically-operated shuttle side rotation
- Equipped with a control panel to manage machine and attachment movements
- Easy access to the aerial work platform area
- Version with top protection available



COMMERCIAL REF.	WEIGHT (kg)	WIDTH (mm)	MAXIMUM CAPACITY (kg)	PEOPLE	MACHINE RANGE					
					COMP	MC	MF	STAB	HC	ROTO
A1759.1	210	1200	200	2	●	-	-	-	-	-
A1740.1	230	1140	200	2	●	●	●	●	-	-
A1740A.1	240	1140	300	2	-	-	-	-	●	-
A1741.1	230	1140	300	2	-	-	-	●	-	●
A1741A.1	225	1140	300	2	-	-	-	-	●	●

COMMERCIAL REF.	WEIGHT (kg)	WIDTH (mm)	MAXIMUM CAPACITY (kg)	PEOPLE	MACHINE RANGE					
					COMP	MC	MF	STAB	HC	ROTO
NEW A1829.1**	670	4000	1000	3	-	-	-	●	-	●
NEW A1829A.1**	690	4000	1000	3	-	-	-	-	●	●
NEW A1742.1**	410	2300	300	3	-	-	-	●	-	●
NEW A1742A.1**	410	2300	300	3	-	-	-	-	●	●
NEW A1742D.1**	430	2300	300	3	-	-	-	-	●	-
A1834.1*	460	2380	300	3	-	-	-	●	-	●
A1834A.1*	480	2380	300	3	-	-	-	-	●	●

* Version with top protection

** Available also in the galvanised version

REQUIREMENTS	OPTIONS	LIMITS
Pre-arrangement for aerial work platform	-	Not compatible with radial wheels. The coupling of an aerial work platform to a machine must be expressly authorised by Merlo SPA

REQUIREMENTS	OPTIONS	LIMITS
Pre-arrangement for aerial work platform	-	The coupling of an aerial work platform to a machine must be expressly authorised by Merlo SPA

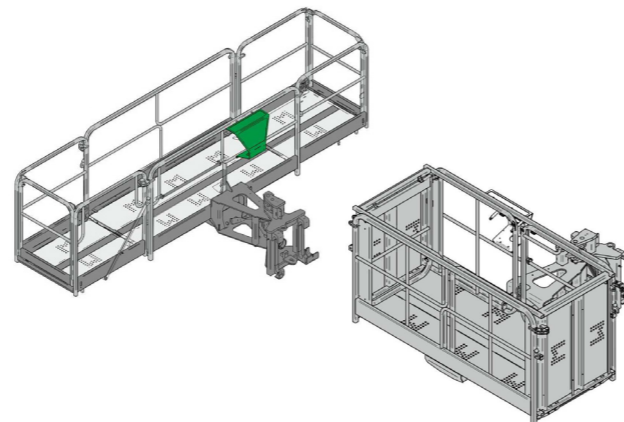


Extensible slewing aerial work platform

Aerial work platform designed to lift two/three persons under safety conditions

FEATURES

- Lightweight frame for larger working area
- Hydraulically-operated shuttle side rotation
- Manual opening of the two extensible structures, it can be done from the inside and at a height
- Standard load limiter



COMMERCIAL REF.	WEIGHT (kg)	WIDTH (mm)	MAXIMUM CAPACITY (kg)	PEOPLE	MACHINE RANGE					
					COMP	MC	MF	STAB	HC	ROTO
NEW A1827.1*	510	2.3-4,5	300	3	-	-	-	●	-	●
NEW A1827A.1*	578	2.3-4,5	300	3	-	-	-	-	●	●
NEW A1827B.1*	645	2.3-4,5	300	3	-	-	-	-	●	-
NEW A1831.1*	530	2.3-4,5	800	3	-	-	-	●	-	●
NEW A1831A.1*	566	2.3-4,5	800	3	-	-	-	-	●	●
NEW A1828.1*	530	2.3-5	300	3	-	-	-	●	-	●
NEW A1828A.1*	566	2.3-5	300	3	-	-	-	-	●	●
NEW A1828B.1*	585	2.3-5	300	3	-	-	-	-	●	-

* Available also in the galvanised version

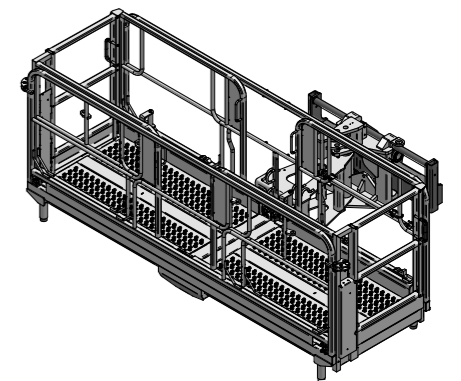
REQUIREMENTS	OPTIONS	LIMITS
Pre-arrangement for aerial work platform	-	The coupling of an aerial work platform to a machine must be expressly authorised by Merlo SPA

Extensible slewing aerial work platform

Aerial work platform designed to lift two/three persons under safety conditions

FEATURES

- Lightweight frame for larger working area
- Hydraulically-operated shuttle side rotation
- Manual sliding of the two extensible structures (double-position), it can be done from the inside and at a height
- Standard load limiter



COMMERCIAL REF.	WEIGHT (kg)	WIDTH (mm)	MAXIMUM CAPACITY (kg)	PEOPLE	MACHINE RANGE					
					COMP	MC	MF	STAB	HC	ROTO
NEW A1846.1*	825	3400 - 5760	700	3	-	-	-	-	-	●
NEW A1847.1*	825	3400 - 5760	700	3	-	-	-	-	-	●

* Available also in the galvanised version

REQUIREMENTS	OPTIONS	LIMITS
Pre-arrangement for aerial work platform	-	The coupling of an aerial work platform to a machine must be expressly authorised by Merlo SPA



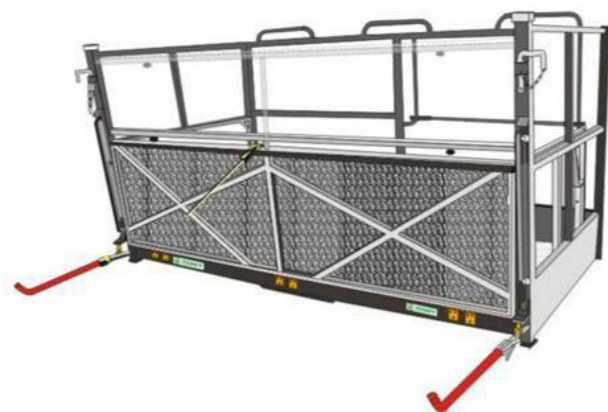
Front-opening slewing aerial work platform



Aerial work platform designed to lift two/three persons under safety conditions

FEATURES

- Ideal for working at height
- Hydraulically-operated shuttle side rotation
- Equipped with a control panel to manage machine and attachment movements
- Flippable front protection



COMMERCIAL REF.	WEIGHT (kg)	WIDTH (mm)	MAXIMUM CAPACITY (kg)	PEOPLE	MACHINE RANGE					
					COMP	MC	MF	STAB	HC	ROTO
A1743.1	555	2400	800	3	-	-	-	●	-	●
A1743A.1	525	2400	800	3	-	-	-	-	-	●

REQUIREMENTS

Pre-arrangement for aerial work platform

OPTIONS

-

LIMITS

The coupling of an aerial work platform to a machine must be expressly authorised by Merlo SPA



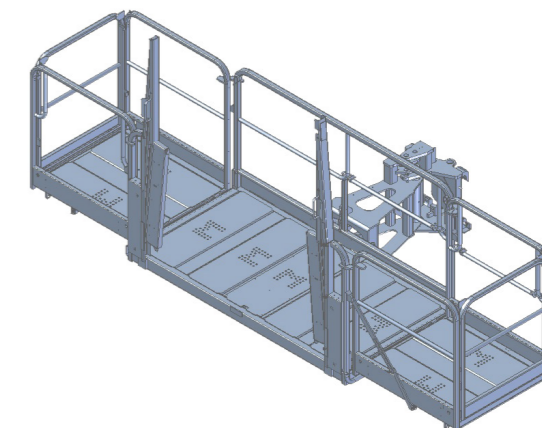
Extendible slewing aerial work platform with front loading



Aerial work platform designed to lift two/three persons under safety conditions

FEATURES

- Ideal for working at height
- Hydraulically-operated shuttle side rotation
- Equipped with a control panel to manage machine and attachment movements
- Pantograph front opening for easy loading



COMMERCIAL REF.	WEIGHT (kg)	WIDTH (mm)	MAXIMUM CAPACITY (kg)	PEOPLE	MACHINE RANGE					
					COMP	MC	MF	STAB	HC	ROTO
A1839.1	590	2300 - 4450	300	3	-	-	-	●	-	●
A1839A.1	590	2300 - 4450	300	3	-	-	-	-	●	●

REQUIREMENTS

Pre-arrangement for aerial work platform

OPTIONS

-

LIMITS

-



SPACE aerial work platform

Aerial work platform designed to lift two persons under safety conditions

FEATURES

- Allows work in a wide variety of conditions
- Shuttle telescopic boom
- Negative and positive movements
- Rotation on carriage axis by +180°/-130°



COMMERCIAL REF.	WEIGHT (kg)	WIDTH (mm)	MAXIMUM CAPACITY (kg)	OPERATION (m)	MACHINE RANGE					
					COMP	MC	MF	STAB	HC	ROTO
A1873.1	615	1265	200	11/-9	-	-	-	-	-	●
A1873A.1	615	1265	200	11/-9	-	-	-	-	-	●

REQUIREMENTS	OPTIONS	LIMITS
Pre-arrangement for aerial work platform	-	The coupling of an aerial work platform to a machine must be expressly authorised by Merlo SPA

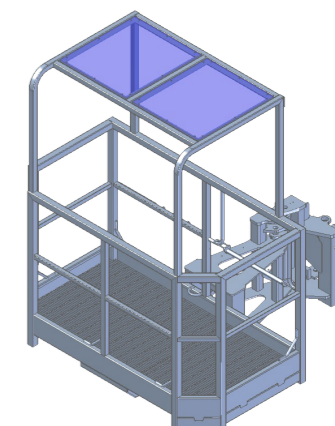


Three-sided aerial work platform with top protection

Frame made of hollow section bars, with grating base.

FEATURES

- Hydraulically-operated shuttle side rotation.
- Flippable overhead guard with anti-collision device.
- Automatic load-sensing device stopping any movement if the set limit is exceeded.
- Fixing on carriage with safety pin.



COMMERCIAL REF.	WEIGHT (kg)	WIDTH (mm)	MAXIMUM CAPACITY (kg)	PEOPLE	MACHINE RANGE					
					COMP	MC	MF	STAB	HC	ROTO
A1836.1	505	1800	300	3	-	-	-	●	-	●
A1837.1	525	1800	300	3	-	-	-	●	-	●

REQUIREMENTS	OPTIONS	LIMITS
Pre-arrangement for aerial work platform	-	-



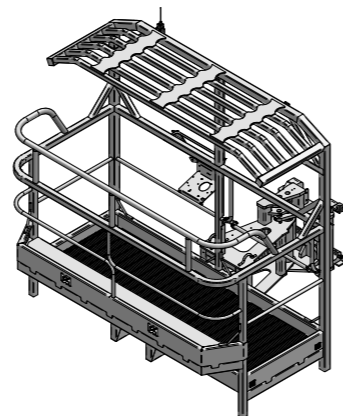
Slewing aerial work platform for tunnels



Aerial work platform designed to lift two/three persons under safety conditions

FEATURES

- Integrated protection grille at the top of the platform to protect against crushing and falling debris
- Hydraulically-operated shuttle side rotation
- Anti-collision system that restricts movement when a minimum safe distance from an obstacle is reached
- Designed according to FOPS-1 standard



COMMERCIAL REF.	WEIGHT (kg)	WIDTH (mm)	MAXIMUM CAPACITY (kg)	PEOPLE	MACHINE RANGE					
					COMP	MC	MF	STAB	HC	ROTO
NEW A1848.1*	630	2300	800	3	-	-	-	-	-	●
NEW A1849.1*	650	2300	800	3	-	-	-	-	-	●

* Available also in the galvanised version

REQUIREMENTS	OPTIONS	LIMITS
Pre-arrangement for aerial work platform	-	The coupling of an aerial work platform to a machine must be expressly authorised by Merlo SPA



Bricks handler



Attachment suitable for handling materials such as bricks and blocks

FEATURES

- Ideal for all types of industry
- Lockable loading access door
- Light and resistant structure
- Compatible with ZM2 and ZM3 carriages



COMMERCIAL REF.	WEIGHT (kg)	WIDTH (mm)	MAXIMUM CAPACITY (kg)	MACHINE RANGE					
				COMP	MC	MF	STAB	HC	ROTO
A1901	200	1200	1000	●	●	●	●	●	●

REQUIREMENTS	OPTIONS	LIMITS
-	-	It can only be used for transporting materials



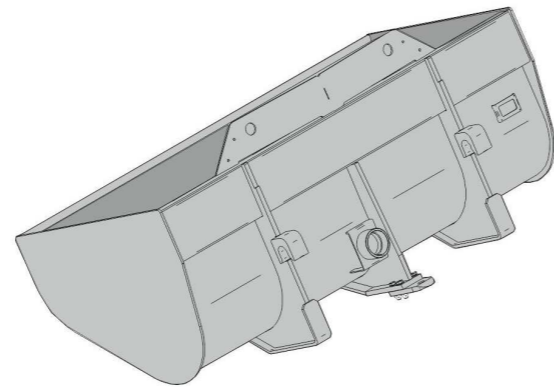
Materials container



Ideal for material handling

FEATURES

- Ideal for all types of industry
- Specific equipment for Roto range
- Easy material loading and unloading
- Light and resistant structure



COMMERCIAL REF.	WEIGHT (kg)	WIDTH (mm)	CAPACITY (l)	MAXIMUM CAPACITY (kg)	MACHINE RANGE					
					COMP	MC	MF	STAB	HC	ROTO
A0844	410	2000	1250	1500	-	-	-	-	-	●
A0849	410	2000	1250	1500	-	-	-	-	-	●

REQUIREMENTS	OPTIONS	LIMITS
-	-	-



Double log clamp



Clamp designed for log handling, forestry and agricultural operations

FEATURES

- High strength
- Independent stop arms
- Ease of use: single hydraulic control
- High manoeuvrability



COMMERCIAL REF.	WEIGHT (kg)	WIDTH (mm)	MAXIMUM CAPACITY (kg)	MIN. - MAX. DIAMETER (mm)	MACHINE RANGE					
					COMP	MC	MF	STAB	HC	ROTO
A2200	590	1215	7000	150-1000	●	●	●	●	●	●
A2201	998	2400	9.000	150-1000	-	-	-	-	●	-

REQUIREMENTS	OPTIONS	LIMITS
-	-	-



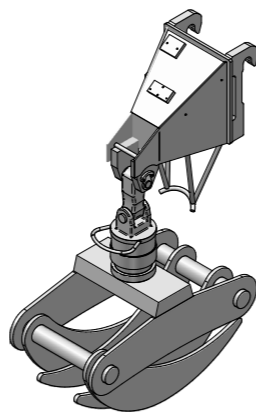
Log clamp



Clamp designed for log handling, forestry and agricultural operations

FEATURES

- Wear-resistant steel clamping element
- Continuous 360° rotation
- Optimised design for gripping logs on the ground without picking up other material
- Optimised weight for increased load capacity



COMMERCIAL REF.	WEIGHT (kg)	WIDTH (mm)	MAXIMUM CAPACITY (kg)	MAXIMUM OPENING (mm)	MACHINE RANGE					
					COMP	MC	MF	STAB	HC	ROTO
A2202C	350	1070	3500	1070	●	-	-	-	-	-
A2202	350	1070	3500	1070	●	-	-	-	-	-
A2203	510	1150	5000	1150	-	●	●	●	-	●
A2204	720	1150	7500	1150	-	-	-	-	●	●

REQUIREMENTS	OPTIONS	LIMITS
-	-	-

Pipe handler



Equipment for handling pipes of various dimensions

FEATURES

- It can handle pipes Ø60 mm - Ø700 mm
- Grip is ensured thanks to adiprene shoes
- Separate control for grab and clamp
- Clamp designed to obtain maximum grip



COMMERCIAL REF.	WEIGHT (kg)	WIDTH (mm)	FORK LENGTH (mm)	MAXIMUM CAPACITY (kg)	MACHINE RANGE					
					COMP	MC	MF	STAB	HC	ROTO
A2216	820	2000	1200	4300	-	-	-	-	●	-

REQUIREMENTS	OPTIONS	LIMITS
-	-	-



Tyre handler



Equipment for handling tyres of large dimensions

FEATURES

- 360° clamp rotation
- It can handle tyres having a diameter up to 4000 mm
- Clamp designed to obtain maximum grip
- Maximum capacity of 5000 kg



COMMERCIAL REF.	ZM	WEIGHT (kg)	WIDTH (mm)	WHEEL DIAMETER (mm)	MAXIMUM CAPACITY (kg)	MACHINE RANGE					
						COMP	MC	MF	STAB	HC	ROTO
A2218	ZM2	800	1720-3280	1200-3000	2000	●	●	●	●	-	●
A2212	ZM3	1450	2188-3290	1800-3100	2000	-	-	-	●	●	●
A2213	ZM4	1657	3638-5120	2000-4000	5000	-	-	-	-	●	-
A2217*	ZM4	1765	3638-5120	2000-4000	5000	-	-	-	-	●	-

* Rotating Pads

REQUIREMENTS	OPTIONS	LIMITS
-	-	-

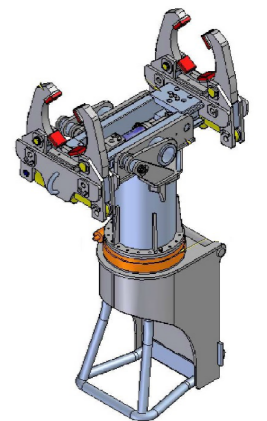
Cylinder handler



Specific handler for cylinders of large dimensions

FEATURES

- It can handle several types of cylinders
- 4 different movements (clamp rotation, clamp opening and closing, slider side shift and tilting)
- 3 different clamping systems to easily adapt to every cylinder
- It can be remotely controlled from the ground



COMMERCIAL REF.	WEIGHT (kg)	MAXIMUM CAPACITY IN THE VERTICAL POSITION (kg)	MAX. DIAMETER (mm)	MAXIMUM PRESSURE (bar)	MACHINE RANGE					
					COMP	MC	MF	STAB	HC	ROTO
A2214	1750	1720-3280	419 (16,5") 343 (13,5") 330 (13")	250	-	-	-	-	●	-

REQUIREMENTS	OPTIONS	LIMITS
-	The max. diameter varies based on the type of clamp used	-

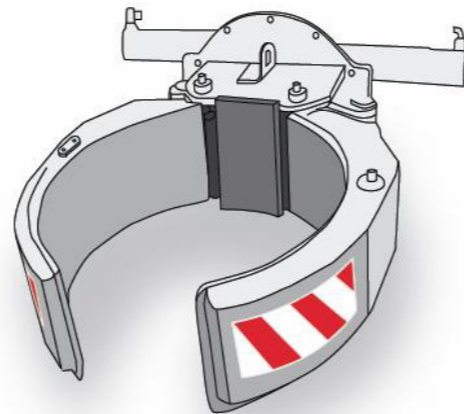


Drum clamp

Implement for clamping and handling drums or similar materials

FEATURES

- Ideal for all types of industry
- 360° clamp rotation
- It handles drums having a diameter of 600 to 700 mm
- Easy to use



COMMERCIAL REF.	WEIGHT (kg)	DRUM MAX-MIN DIAMETER (mm)	MAXIMUM CAPACITY (kg)	MACHINE RANGE					
				COMP	MC	MF	STAB	HC	ROTO
A2210C	275	600-700	600	●	-	-	-	-	-
A2210	275	600-700	600	●	●	●	●	-	●

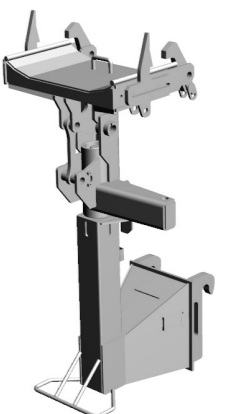
REQUIREMENTS	OPTIONS	LIMITS
Prearrangement for accessory with 2 functions	-	-

Tunnel ring holder boom

Specific attachment for transporting ribs

FEATURES

- It allows safe rib clamping and transport
- Adjustable rib wedges
- Equipped with rib stop on the implement
- Head 75° rotation to reduce front overall dimensions



COMMERCIAL REF.	WEIGHT (kg)	HEIGHT (mm)	WIDTH (mm)	MACHINE RANGE					
				COMP	MC	MF	STAB	HC	ROTO
A2414	380	1695	1695	-	-	-	●	-	●

REQUIREMENTS	OPTIONS	LIMITS
-	-	-



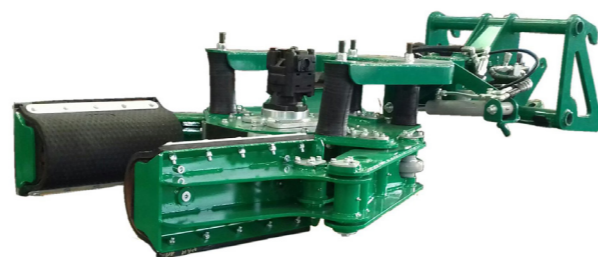
Fruit tree shaker



Vibrating equipment designed for harvesting fruits from olive trees and fruit trees in general by mechanically detaching them and letting them fall down

FEATURES

- Customised shaking by means of variable geometry eccentric masses ensuring minimum stress to the plant
- Patented shaking, anti-barking and energy-saving technologies
- Available with one or two arms
- Optimised design to maximise head-tree contact surface area



COMMERCIAL REF.	WEIGHT (kg)	WIDTH (mm)	MAXIMUM DIAMETER (kg)	MACHINE RANGE					
				COMP	MC	MF	STAB	HC	ROTO
23S503	700	1370	500	●	●	-	-	-	-

REQUIREMENTS	OPTIONS	LIMITS
Prearrangement for olive tree shaking	-	-

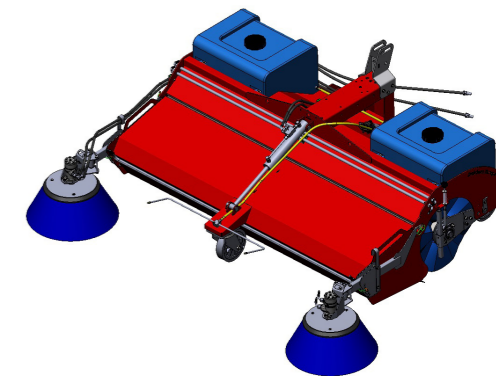
Sweeper



Modular attachment designed to meet sweeping needs, especially in urban, industrial and agricultural contexts

FEATURES

- Customisable modular structure
- Moistening reservoirs integrated in the chassis for enhanced visibility
- Automatic road profile adaptation system
- Medium or intensive use version available



COMMERCIAL REF.	WEIGHT (kg)	WIDTH (mm)	CONTAINER CAPACITY (l)	MACHINE RANGE					
				COMP	MC	MF	STAB	HC	ROTO
23S505	260 - 610	1800 - 2930	180 - 600	●	●	●	●	●	●

REQUIREMENTS	OPTIONS	LIMITS
Services oil continuous delivery	-	-



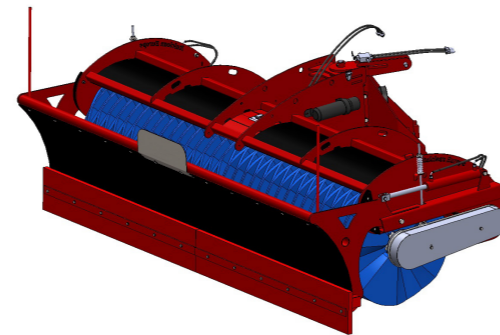
Combined snow sweeper



Attachment designed to remove snow where efficient cleaning is required, with no salt or chemicals

FEATURES

- Multi-purpose attachment
- Snow blade with reversible wearing profile
- Automatic road profile adaptation system
- Fully recyclable central brush



COMMERCIAL REF.	WEIGHT (kg)	HEIGHT (mm)	WIDTH (mm)	MACHINE RANGE					
				COMP	MC	MF	STAB	HC	ROTO
23S504	880 - 1100	1100	2750 - 3750	●	●	●	●	●	●

REQUIREMENTS	OPTIONS	LIMITS
Services oil continuous delivery	-	-

Data, characteristics and illustrations contained in this document are indicative and not binding.

Merlo Spa pursues a policy of continuous research and development, therefore, our products may have different characteristics from those described or may undergo changes without any prior notice. The products shown may include optional equipment.

Y497ENG
0126

Your Merlo dealer

MERLO S.p.A.

Via Nazionale, 9 - 12010 S. Defendente di Cervasca (CN) Italy
Tel. +39 0171 614111 - Fax +39 0171 684101
www.merlo.com - info@merlo.com

