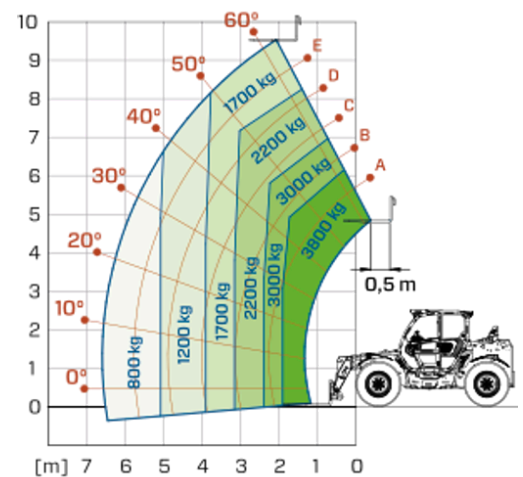


Medium Capacity Telehandlers

Regulatory area: EU
TF38.10

MERLO



MODEL	TF38.10-116	TF38.10-136	TF38.10CS-116	TF38.10CS-136	TF38.10CS-145-CVT
A - Length (mm)	4760	4760	4760	4760	4760
C - Wheelbase (mm)	2810	2810	2810	2810	2810
F - Ground clearance (mm)	460	460	460	460	460
H - Width (mm)	2310	2310	2310	2310	2310
M - Cab width (mm)	1010	1010	1010	1010	1010
P - Height (mm)	2530	2530	2530	2530	2530
S - Fork steering range (mm)	4800	4800	4800	4800	4800

MODEL	TF38.10-116	TF38.10-136	TF38.10CS-116	TF38.10CS-136	TF38.10CS-145-CVT
PERFORMANCE					
Unladen weight (kg)	8300	8500	8500	8500	8500
Maximum load capacity (kg)	3800	3800	3800	3800	3800
Lift height (m)	9.5	9.5	9.5	9.5	9.5
Maximum reach (m)	6.6	6.6	6.6	6.6	6.6
Boom side-shift (mm)	—	—	—	—	—
Frame levelling (%)	—	—	—	—	—
Boom section	3	3	3	3	3
POWERTRAIN					
Engine	PERKINS 904	PERKINS 904	PERKINS 904	PERKINS 904	DEUTZ TCD 3.6
Range/Cylinders (l)	3.6/4	3.6/4	3.6/4	3.6/4	3.6/4
Engine power (kW/HP)	85.9/116.8	100/136	85.9/116.8	100/136	105/143
Anti-pollution technology	Stage V - SCR + DOC + DPF	Stage V - SCR + DOC + DPF	Stage V - SCR + DOC + DPF	Stage V - SCR + DOC + DPF	Stage V - SCR + DOC + DPF
Reversible Fan	●	●	●	●	●
Maximum speed (km/h)	40	40	40	40	40
Fuel tank capacity (l)	140	140	140	140	140
AdBlue tank capacity (l)	16	16	16	16	18
Hydrostatic transmission EPD	●	●	●	●	CVTronic
Electronic joystick	●	●	●	●	●
Axles	Drop portal	Drop portal	Drop portal	Drop portal	Drop portal
Brakes	Dry discs	Dry discs	Dry discs	Dry discs	Dry discs
HYDRAULIC					
Delivery / pressure (bar-l/min)	151-250	139-250	151-250	139-250	145-250
Hydraulic oil tank capacity (l)	100	100	100	100	100
CAB					
ASCS	Light	Light	Light	Light	Light
FOPS/ROPS Cab	●	●	●	●	●
Tilting cab	—	—	—	—	—
CONFIGURATION					
Hydropneumatic Suspension CS Merlo	—	—	●	●	●
Frame suspension	—	—	—	—	—
Permanent four-wheel drive	●	●	●	●	●
Three steering way	●	●	●	●	●
Standard tyres	400/70-24"	400/70-24"	400/70-24"	400/70-24"	400/70-24"
Hydraulically controlled stabilizers	—	—	—	—	—
Turret rotation	—	—	—	—	—
PTO (rpm)	—	—	—	—	—
3-point rear linkage (kg)	—	—	—	—	—

— NOT AVAILABLE • ● STANDARD • ○ OPTIONAL

Your Merlo dealer



MERLO S.P.A.

Via Nazionale, 9
12010 S. Defendente di Cervasca, (Cuneo) Italia
Tel. +39 0171 614111

info@merlo.com www.merlo.com

Release 18/06/2026 - 7-7

Data, specifications and illustrations contained in this document are indicative and not binding. Merlo S.p.A. pursues a policy of continuous research and development; therefore, products may differ from those described or be subject to change without prior notice. The products shown may include optional equipment.