

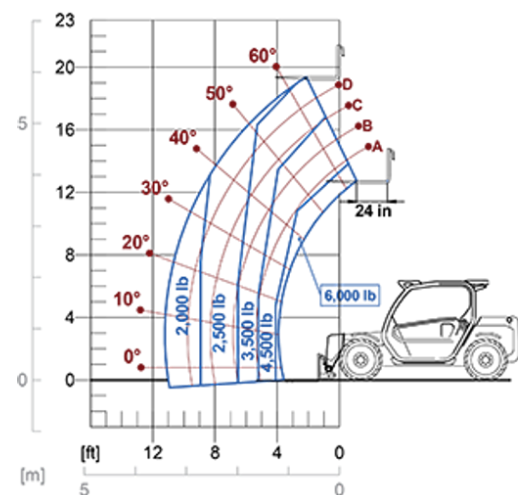
# Compact Telehandlers

Regulatory area: NA

## TF27.6



MODEL	TF27.6EE4
A - Length (in)	154
C - Wheelbase (in)	96
F - Ground clearance (in)	11
H - Width (in)	73
M - Cab width (in)	40
P - Height (in)	79.5
S - Fork steering range (in)	165



MODEL	TF27.6EE4
<b>PERFORMANCE</b>	
Unladen weight (lb)	10692
Maximum load capacity (lb)	6000
Lift height (ft)	19'
Maximum reach (ft)	10'
Boom side-shift (in)	—
Frame levelling (%)	—
Boom section	2
<b>POWERTRAIN</b>	
Engine	REHLKO 2504
Range/Cylinders (l)	2.5/4
Engine power (kW/HP)	55.4/75.1
Anti-pollution technology	Tier 4 - DOC
Reversible Fan	—
Maximum speed (mph)	25
Fuel tank capacity (gal)	18.5
AdBlue tank capacity (gal)	—
Hydrostatic transmission EPD	TOP - 1V
Electronic joystick	STD
Axles	Axial
Brakes	Dry discs
<b>HYDRAULIC</b>	
Delivery / pressure (gal/min-psi)	25.1 - 3046
Hydraulic oil tank capacity (gal)	18.5
<b>CAB</b>	
ASCS	Light
FOPS/ROPS Cab	●
Tilting cab	—
<b>CONFIGURATION</b>	
Hydropneumatic Suspension CS Merlo	—
Frame suspension	—
Permanent four-wheel drive	●
Three steering way	●
Standard tyres	12/75-18"
Hydraulically controlled stabilizers	—
Turret rotation	—
PTO (rpm)	—
3-point rear linkage (lb)	—

— NOT AVAILABLE • ● STANDARD • ○ OPTIONAL

**Your Merlo dealer**



**MERLO S.p.A.**

Via Nazionale, 9  
12010 S. Defendente di Cervasca, (Cuneo) Italia  
Tel. +39 0171 614111

info@merlo.com www.merlo.com

Release 19/02/2026 - 7:59

Data, specifications and illustrations contained in this document are indicative and not binding. Merlo S.p.A. pursues a policy of continuous research and development; therefore, products may differ from those described or be subject to change without prior notice. The products shown may include optional equipment.