

Rotating Telehandlers

ROTO70.28SPULSE4 CVT



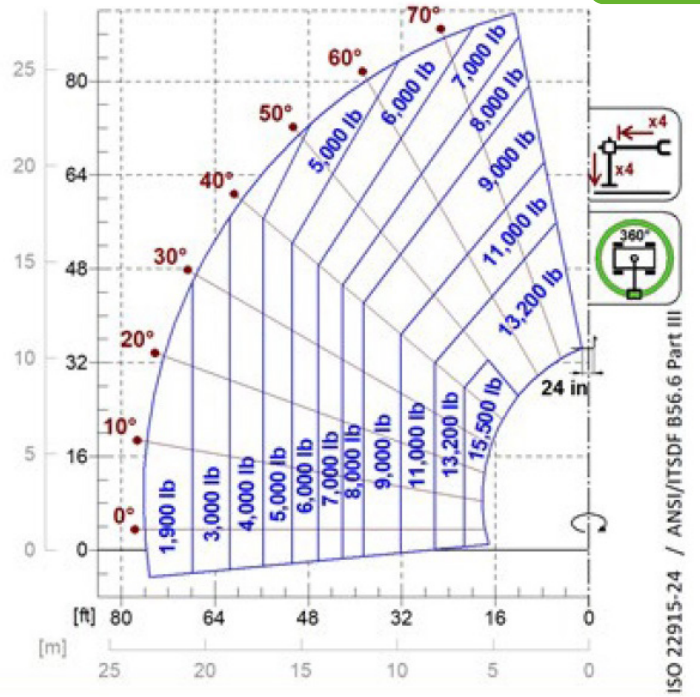
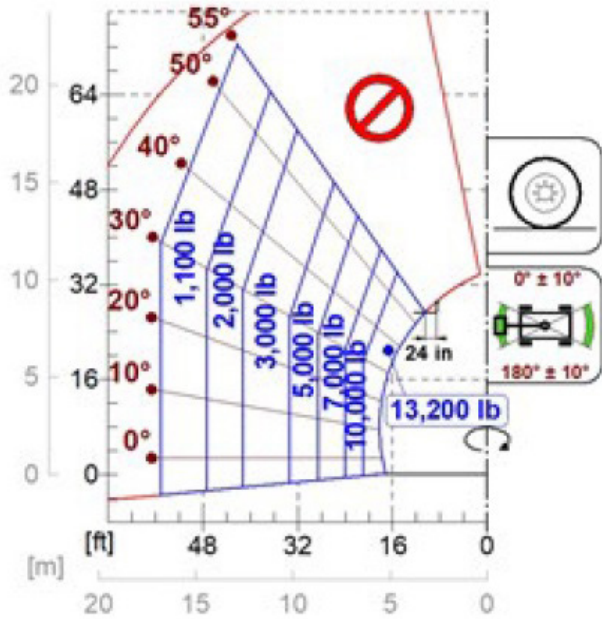
 **MERLO**



PERFORMANCE AND FEATURES	ROTO70.28SPLUSEE4 CVT		
Performance			
Total unladen weight (lb)	50155		
Maximum capacity (lb)	15500		
Lifting height (ft)	91' 9"		
Maximum reach (ft)	76' 1"		
Maximum operating height (ft)	33' 0"		
Maximum operating reach (ft)	21' 5"		
Capacity at maximum height (lb)	7000		
Capacity at maximum reach (lb)	1900		
Lateral boom movement (inch)	-		
Tilting correction (%)	± 12; ± 4		
Boom sections	4		
PowerTrain			
Turbo motor	FPT NEF45		
Displacement/cylinders	4500/4		
Engine Power (kW/HP)	125/170		
Anti-pollution technology	TIER 4 - SCR + DOC		
Reversible fan	-		
Maximum speed (mph)	25		
Fuel tank (gal)	39.6		
AdBlue tank (gal)	11.4		
Hydrostatic transmission	CVTronic		
EPD	●		
Auto-revving joystick	●		
Axles - Reducers	Axial, Epicyclic		
Machine brakes	Wet discs		
Automatic parking brake	●		
Hydraulic			
Hydraulic pump	2 - LS + FS		
Flow rate/pressure (gal/min - psi)	41,7+26,4 - 3771		
Hydraulic tank	58.1		
Hydraulic outlet at the top of the boom	●		
Rear hydraulic outlets	-		
Cab			
Cab configuration	Premium		
ASCS Adaptive Stability Control System	Full		
FOPS LIV II cab	●		
ROPS cab	●		
Cab commands	Electronic joystick control		
Tilting Cab	●		
Reverse shuttle	Dual Reverse		
Configuration			
Cab suspension	-		
Boom suspension	○		
Suspension on axles	●		
Work headlights on cab	●		
Sun blind	●		
Tac-lock	●		
Provision for a platform	●		
Two floating forks	●		
Inching-Control	-		
Four-wheel drive	●		
Four-wheel steering	●		
Three steering modes	●		
Standard tyres	445/80 R 25		
Optional tyres	-		
Stabilisers	Multiposition		
Turret rotation	continuous		
Type approval as an agricultural tractor	-		
Approval with PNEUMATIC braking	-		
Approval with HYDRAULIC braking	-		
PTO	-		
3-point linkage	-		

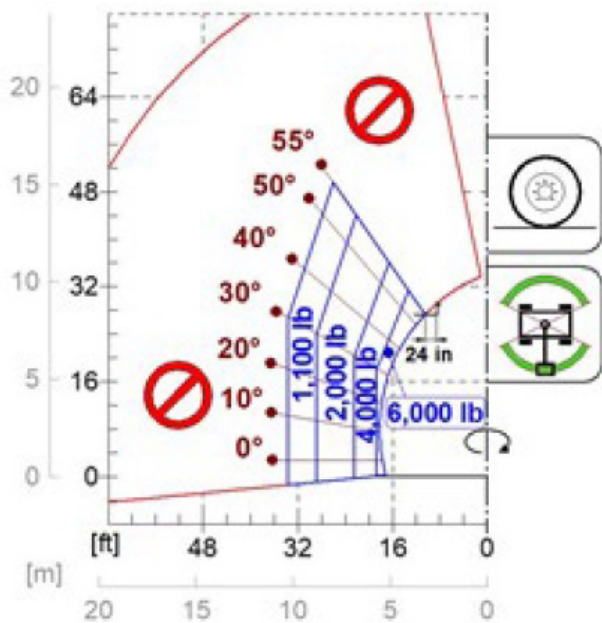
- Not Available
● Standard
○ Optional

Load charts



ISO 22915-24 / ANSI/ITSDF B56.6 Part III

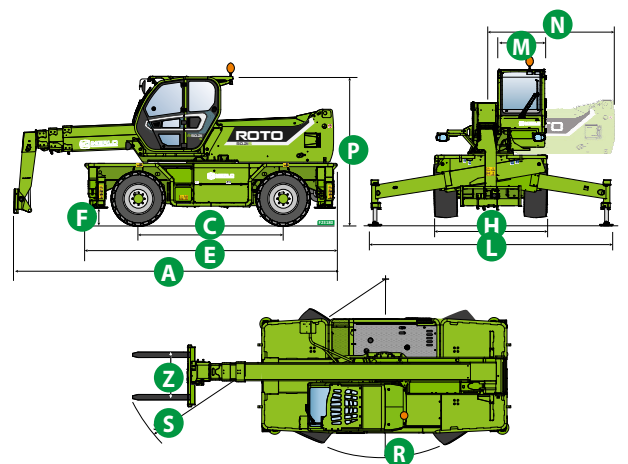
ROTO 70.28SPLUSEE4-CVT

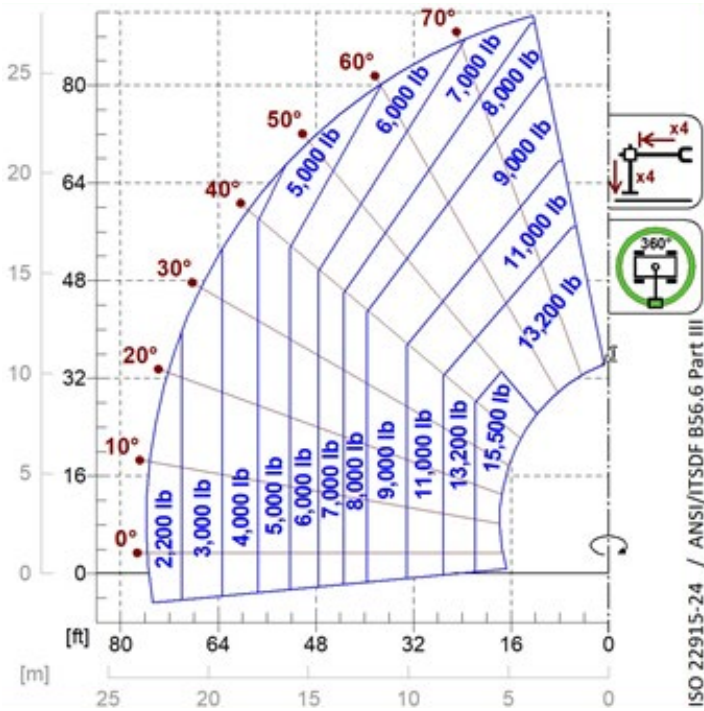


Dimensions

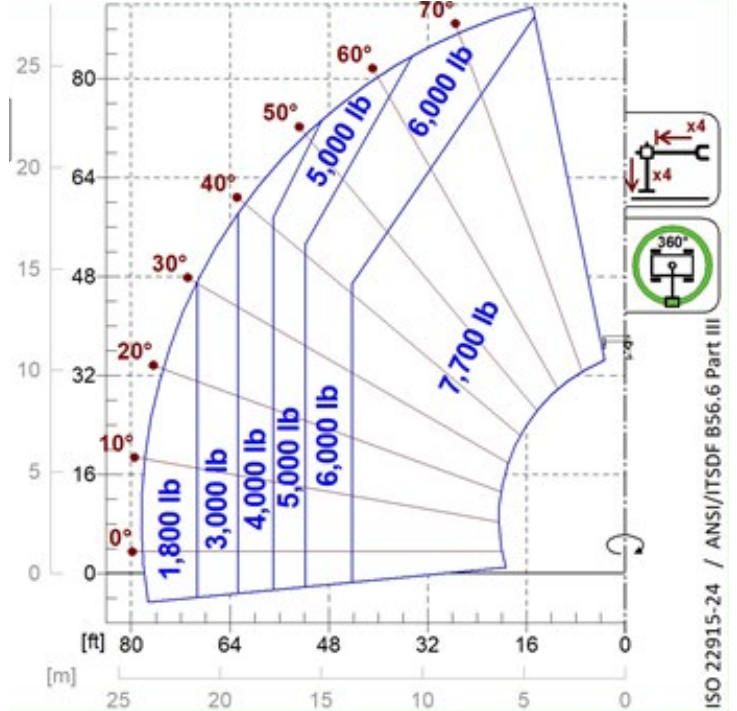


	ROTO 70.28		
A (inch)	327.2		
C (inch)	148.8		
E (inch)	272.0		
F (inch)	12.4		
H (inch)	100.0		
L (inch)	248.8		
M (inch)	39.8		
N (inch)	145.3		
P (inch)	130.9		
R (inch)	190.6		
S (inch)	272.4		
Z (inch)	33.5		

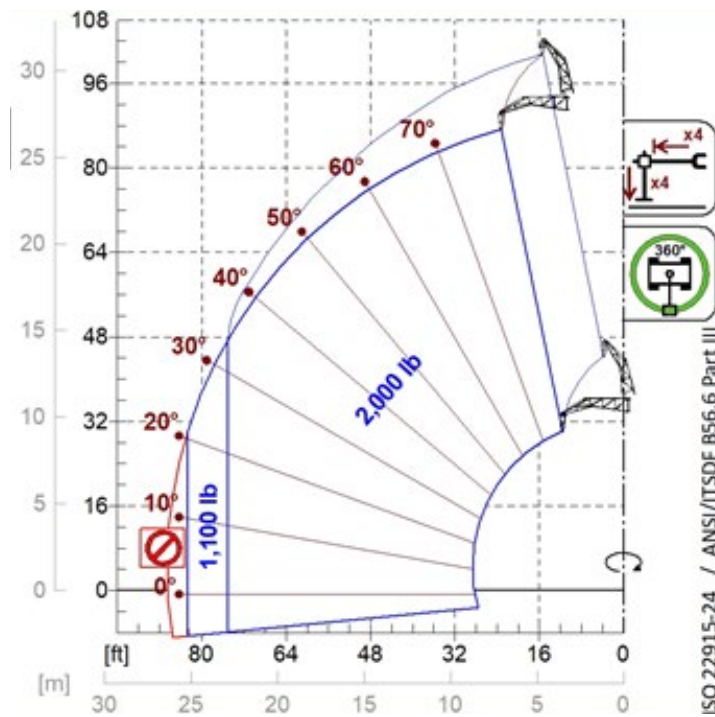




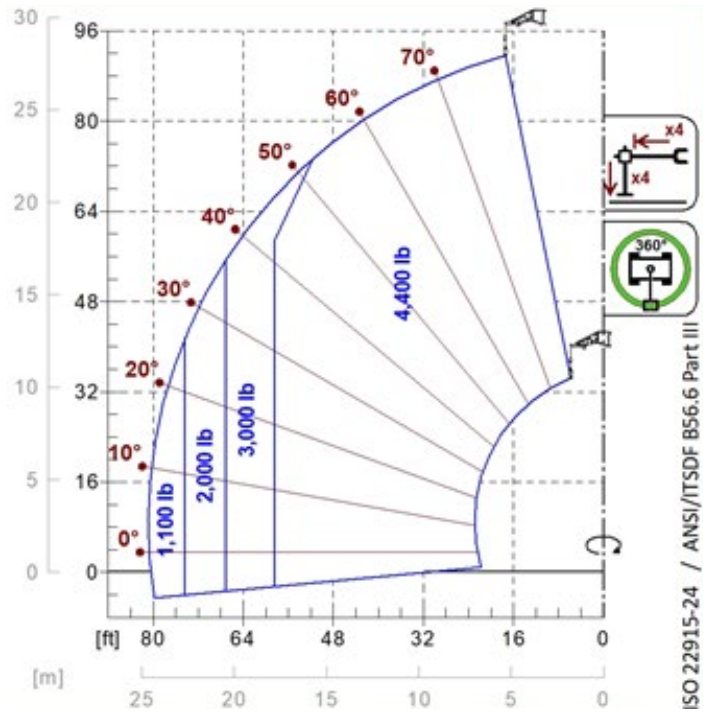
A1001



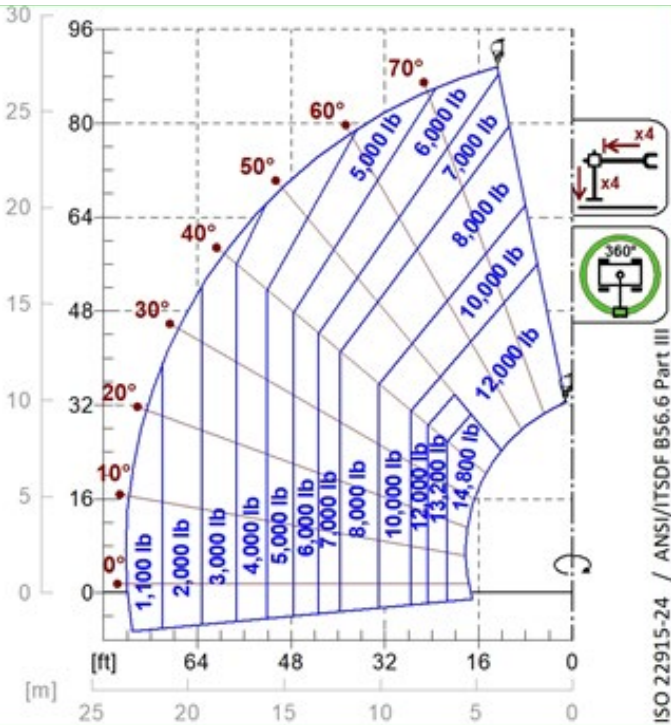
A1119B



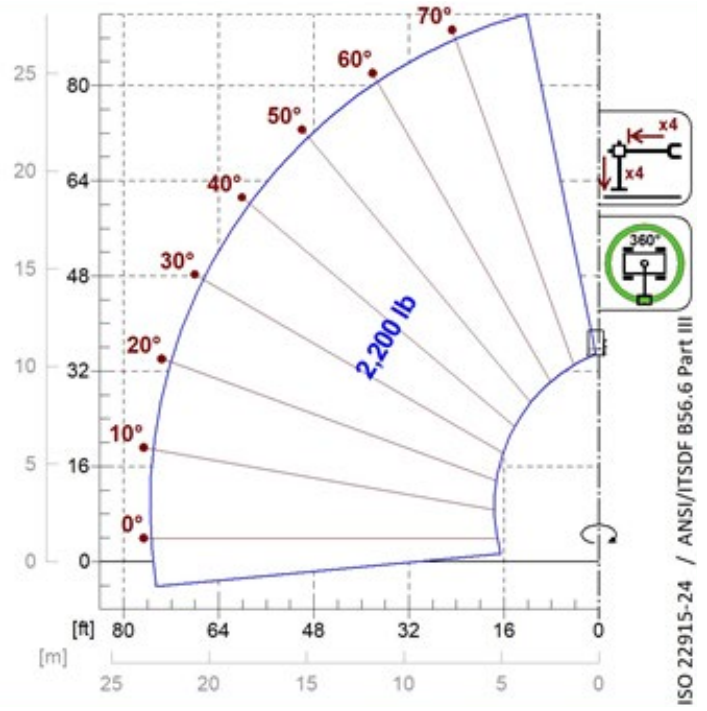
A1220B
A1320B



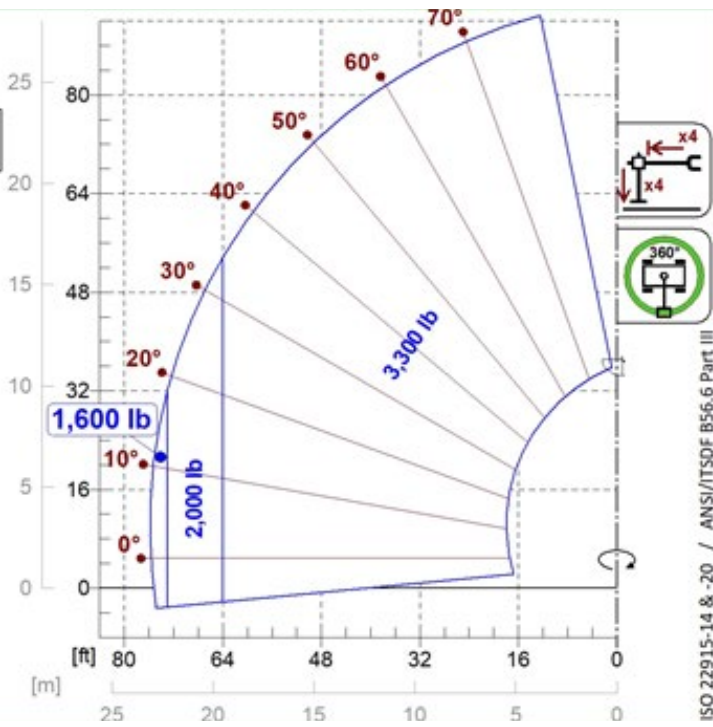
A1321B



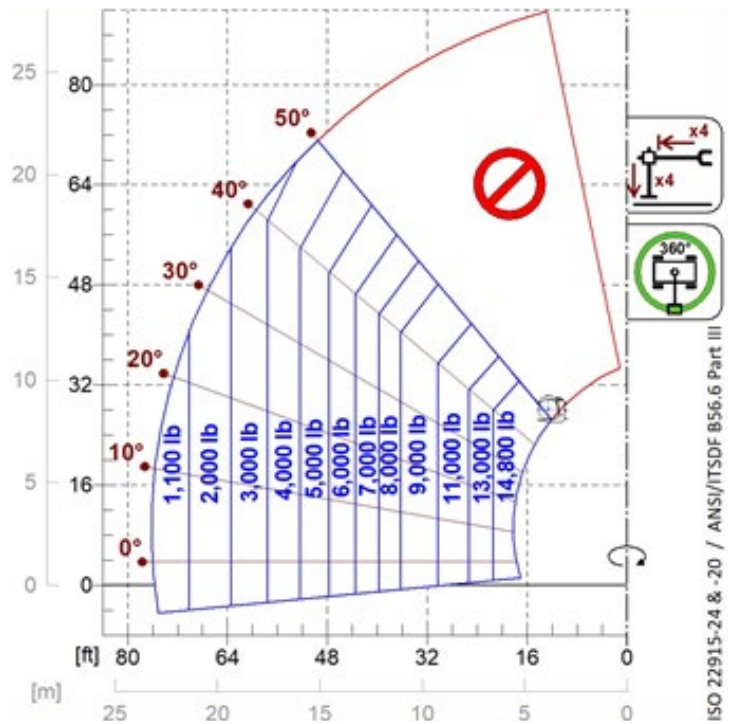
A2768
A2769



A1900



A0849



A2200

Your Merlo dealer



ROTO 70.28SPLUSEE4- CVT:

MA00853 - VIN: D0003914 - SAV: D0492E1 - 26/11/2020

MERLO S.P.A.

Via Nazionale, 9

12010 S. Defendente di Cervasca, (Cuneo) Italia

Tel. +39 0171 614111

Fax +39 0171 684101

info@merlo.com

www.merlo.com

