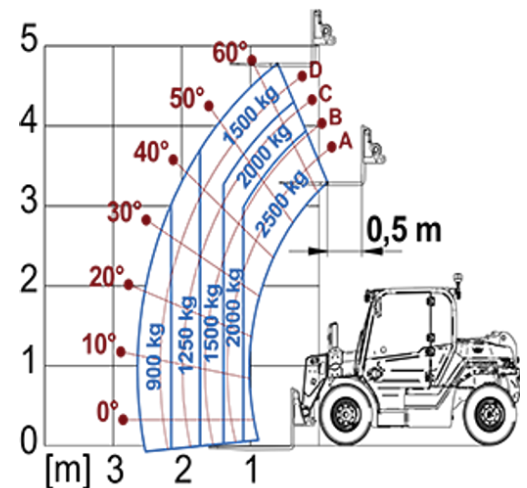


# Electric Telehandlers

Regulatory area: EE

## EW25.5

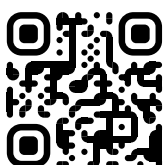


MODEL	EW25.5-60	EW25.5-90
A - Length (mm)	3320	3320
C - Wheelbase (mm)	2100	2100
F - Ground clearance (mm)	230	230
H - Width (mm)	1540	1540
M - Cab width (mm)	770	770
P - Height (mm)	1975	1975
S - Fork steering range (mm)	2230	2700

MODEL	EW25.5-60	EW25.5-90
<b>PERFORMANCE</b>		
Unladen weight (kg)	4950	4950
Maximum load capacity (kg)	2500	2500
Lift height (m)	4.8	4.8
Maximum reach (m)	2.6	2.6
Boom section	2	2
<b>POWERTRAIN</b>		
Engine	2 Electric	3 Electric
Battery (type and V)	Lead acid - 48 V	Lead acid - 48 V
Nominal capacity	960 Ah	960 Ah
Engine power (kW/HP)	44/60	60/90
Maximum speed (km/h)	25	25
Traction	2WD, 3 traction mode	4WD, 3 traction mode
Autonomy (hours)	8h	8h
Recharge time	9h (220V)	9h (220V)
Recharge voltage	220V/400V	220V/400V
Battery charger	●	●
Lithium battery	○	○
<b>HYDRAULIC</b>		
Hydraulic pump	G + FS	G + FS
Delivery / pressure (L / MIN - BAR)	42 - 210	42 - 210
<b>CAB</b>		
Closed cab	○	○
FOPS LIV I and ROPS	●	●
Controls	Electronic joystick control	Electronic joystick control
Reverse shuttle	Dual Reverse	Dual Reverse
<b>CONFIGURATION</b>		
Battery fast replacement	●	●
Work lights on cab (LED)	●	●
Rotating beacon and blue reverse light	●	●
Two steering wheels	Rear	Rear
Front standard tyres	10/75-15.3"	10/75-15.3"
Rear standard tyres	7.5-15"	7.5-15"
E-holder brakes	●	●
Regenerative braking	●	●
Automatic parking brake	●	●

— NOT AVAILABLE • ● STANDARD • ○ OPTIONAL

**Your Merlo dealer**



**MERLO S.P.A.**

Via Nazionale, 9  
12010 S. Defendente di Cervasca, (Cuneo) Italia  
Tel. +39 0171 614111

info@merlo.com www.merlo.com

Release 3/12/2025 - 8:42

Data, specifications and illustrations contained in this document are indicative and not binding. Merlo S.p.A. pursues a policy of continuous research and development; therefore, products may differ from those described or be subject to change without prior notice. The products shown may include optional equipment.