

High capacity telehandlers

Turbofarmer 65.9



**PERFORMANCE AND FEATURES****TF65.9T-170-HF****TF65.9TCS-170-HF****TF65.9TCS-170-CVTRONIC-HF****Performance**

Unladen weight (kg)	11000	11200	11250
Maximum load capacity (kg)	6500	6500	6500
Lift height (m)	8.8	8.8	8.8
Maximum reach (m)	4.7	4.7	4.7
Lift height at max. load capacity (m)	7	7	7
Reach at max. load capacity (m)	1.5	1.5	1.5
Load capacity at max. lift height (m)	4500	4500	4500
Load capacity at max. reach (kg)	2000	2000	2000
Boom side-shift (mm)	-	-	-
Frame levelling (%)	+/-8	+/-8	+/-8
Boom section	2	2	2

Powertrain

Engine	FPT NEF45	FPT NEF45	FPT NEF45
Range/Cylinders	4500/4	4500/4	4500/4
Engine power (kW/HP)	125/170	125/170	125/170
Anti-pollution technology	Stage V - SCR + DOC + DPF	Stage V - SCR + DOC + DPF	Stage V - SCR + DOC + DPF
Reversible Fan	○	○	○
Maximum speed (km/h)	40	40	40
Fuel tank capacity (l)	140	140	140
AdBlue tank capacity (l)	18	18	18
Hydrostatic transmission	YES - 2V	YES - 2V	CVTronic
EPD	PLUS	PLUS	PLUS
Joystick autoaccelerante	STD	STD	STD
Axles	Axial	Axial	Axial
Reducers	Epicyclic	Epicyclic	Epicyclic
Brakes	Dry discs	Dry discs	Dry discs

Hydraulic

Hydraulic pump	HF	HF	HF
Delivery / pressure (L / MIN - BAR)	160 - 250	160 - 250	160 - 250
Hydraulic oil tank capacity (l)	100	100	100
Auxiliary hydraulic service on boom	●	●	●
Rear service line	○	○	○

Cab

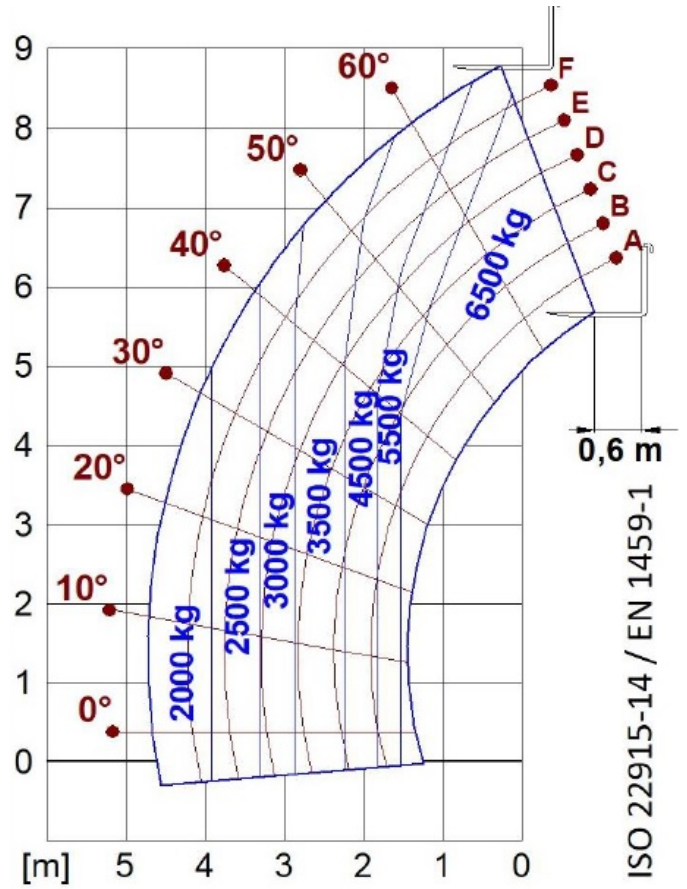
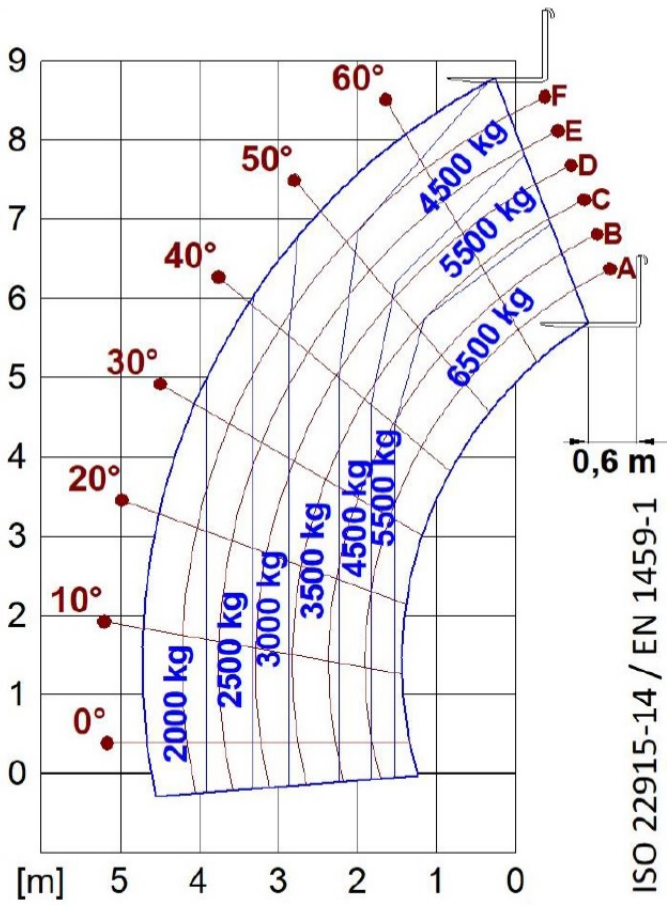
Cab finishing	PREMIUM	PREMIUM	PREMIUM
ASCS	Full	Full	Full
FOPS II Cab	●	●	●
ROPS Cab	●	●	●
Controls	Electronic joystick control	Electronic joystick control	Electronic joystick control
Tilting cab	—	—	—
Reverse shuttle	Dual reverse	Dual reverse	Dual reverse

Configuration

Hydropneumatic Suspension CS Merlo	—	●	●
Hydropneumatic Suspension BSS Merlo	●	●	●
Hydropneumatic Suspension EAS Merlo	—	—	—
Work lights on cab	●	●	●
Sun-shade in the cab	●	●	●
Tac-lock	●	●	●
Pre-arrangement for aerial work platform	—	—	—
Two floating forks	●	●	●
Pedal Inching-Control	●	●	●
Permanent four-wheel drive	●	●	●
All wheel steering	●	●	●
Three steering way	●	●	●
Standard tyres	—	—	—
OPT tyres	—	—	—
Hydraulically controlled stabilizers	—	—	—
Turret rotation	—	—	—
Tractor type approval	○	○	○
Pneumatic brakes (ton)	○	○	○
Hydraulic brakes (ton)	○	○	○
PTO	—	—	—
3-point rear linkage	—	—	—



— not available
● standard
○ optional



Dimensions



	TF65.9T-170-HF	TF65.9TCS-170-HF	TF65.9TCS-170-CVTRONIC-HF
A - Length	5260	1270	1270
C - Wheelbase	3050	4660	4660
F - Ground clearance	440	440	440
H - Width	2400	2400	2400
M - Cabin width	1010	1010	1010
P - Height	2510	2510	2510
R - Turning radius at wheels	4560	4560	4560
S - Turning radius at forks	5325	5325	5325

Your Merlo dealer

MERLO S.P.A.

Via Nazionale, 9

12010 S. Defendente di Cervasca, (Cuneo) Italia

Tel. +39 0171 614111

Fax +39 0171 684101

info@merlo.com

www.merlo.com



