

Medium Capacity Telehandlers

Turbofarmer 42.7TT



**PERFORMANCE AND FEATURES****TF42.7TTCS-145-CVTRONIC****TF42.7TT-136****TF42.7TTCS-136****Performance**

Unladen weight (kg)	8000	7800	7800
Maximum load capacity (kg)	4200	4200	4200
Lift height (m)	7	7	7
Maximum reach (m)	3.8	3.8	3.8
Lift height at max. load capacity (m)	5.6	5.6	5.6
Reach at max. load capacity (m)	1.5	1.5	1.5
Load capacity at max. lift height (m)	3500	3500	3500
Load capacity at max. reach (kg)	1750	1750	1750
Boom side-shift (mm)	+/- 150	+/- 150	+/- 150
Frame levelling (%)	+/- 8	+/- 8	+/- 8
Boom section	2	2	2

Powertrain

Engine	Deutz TCD3.6	Perkins 904J	Perkins 904J
Range/Cylinders	3600/4	3600/4	3600/4
Engine power (kW/HP)	105/143	85,9/116,8	85,9/116,8
Anti-pollution technology	Stage V - SCR + DPF + DOC	Stage V - SCR + DPF + DOC	Stage V - SCR + DPF + DOC
Reversible Fan	●	●	●
Maximum speed (km/h)	40	40	40
Fuel tank capacity (l)	140	140	140
AdBlue tank capacity (l)	18	18	18
Hydrostatic transmission	CVTronic	YES - 2V	YES - 2V
EPD	PLUS	PLUS	PLUS
Joystick autoaccelerante	STD	STD	STD
Axles	Drop portal	Drop portal	Drop portal
Reducers	RR 700	RR 700	RR 700
Brakes	Dry discs	Dry discs	Dry discs

Hydraulic

Hydraulic pump	LS+FS	LS+FS	LS+FS
Delivery / pressure (L / MIN - BAR)	145-250	151-250	151-250
Hydraulic oil tank capacity (l)	100	100	100
Auxiliary hydraulic service on boom	●	●	●
Rear service line	○	○	○

Cab

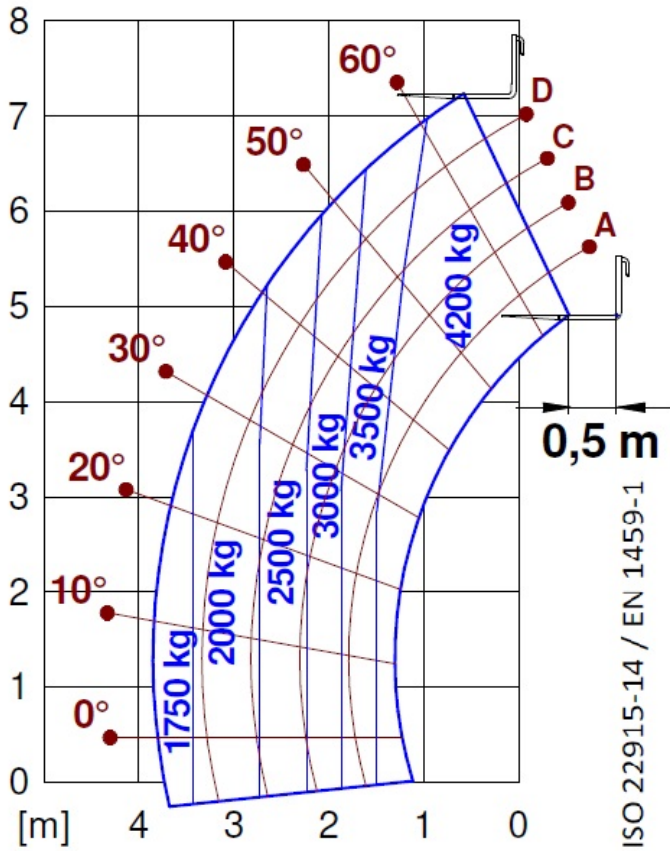
Cab finishing	ECO	ECO	ECO
ASCS	Light	Light	Light
FOPS II Cab	●	●	●
ROPS Cab	●	●	●
Controls	Electronic joystick control	Electronic joystick control	Electronic joystick control
Tilting cab	—	—	—
Reverse shuttle	Dual reverse	Dual reverse	Dual reverse

Configuration

Hydropneumatic Suspension CS Merlo	●	—	—
Hydropneumatic Suspension BSS Merlo	○	○	○
Hydropneumatic Suspension EAS Merlo	—	—	—
Work lights on cab	●	●	●
Sun-shade in the cab	○	○	○
Tac-lock	●	●	●
Pre-arrangement for aerial work platform	○	○	○
Two floating forks	●	●	●
Pedal Inching-Control	●	●	●
Permanent four-wheel drive	●	●	●
All wheel steering	●	●	●
Three steering way	●	●	●
Standard tyres	—	—	—
OPT tyres	—	—	—
Hydraulically controlled stabilizers	—	—	—
Turret rotation	—	—	—
Tractor type approval	○	○	○
Pneumatic brakes (ton)	○	○	○
Hydraulic brakes (ton)	○	○	○
PTO	—	—	—
3-point rear linkage	—	—	—



— not available
● standard
○ optional



Dimensions



	TF42.7TTCS-145-CVTRONIC	TF42.7TT-136	TF42.7TTCS-136
A - Length	4730	1215	1215
C - Wheelbase	2810	4104	4104
F - Ground clearance	460	460	460
H - Width	2310	2310	2310
M - Cabin width	1010	1010	1010
P - Height	2530	2530	2530
R - Turning radius at wheels	3985	3985	3985
S - Turning radius at forks	4800	4800	4800

Your Merlo dealer

MERLO S.P.A.

Via Nazionale, 9

12010 S. Defendente di Cervasca, (Cuneo) Italia

Tel. +39 0171 614111

Fax +39 0171 684101

info@merlo.com

www.merlo.com



