

Rotating telehandlers

Roto 50.21



**PERFORMANCE AND FEATURES****ROTO50.21S****ROTO50.21SPLUS****ROTO50.21****Performance**

Unladen weight (kg)	15800	16500	15800
Maximum load capacity (kg)	4950	4950	4950
Lift height (m)	21	21	21
Maximum reach (m)	17.9	17.9	17.9
Lift height at max. load capacity (m)	10.7	10.7	10.7
Reach at max. load capacity (m)	7	7	7
Load capacity at max. lift height (m)	2500	2500	2500
Load capacity at max. reach (kg)	800	800	800
Boom side-shift (mm)	-	-	-
Frame levelling (%)	+/-12, +/-4	+/-12, +/-4	-
Boom section	4	4	4

Powertrain

Engine	FPT NEF45	FPT NEF45	Deutz TCD
Range/Cylinders	4500/4	4500/4	3600/4
Engine power (kW/HP)	125/170	125/170	55,4/75
Anti-pollution technology	Stage V - DOC + DPf+ SCR	Stage V - DOC + DPf+ SCR	Stage V, DOC+DPF
Reversible Fan	-	-	-
Maximum speed (km/h)	40	40	25
Fuel tank capacity (l)	150	150	150
AdBlue tank capacity (l)	43	43	
Hydrostatic transmission	YES - 2V	YES - 2V	YES - 2V
EPD	STD	STD	STD
Joystick autoaccelerante	STD	STD	STD
Axles	Drop portal	Drop portal	Drop portal
Reducers	RR 700	RR 700	RR 700
Brakes	Dry discs	Dry discs	Dry discs

Hydraulic

Hydraulic pump	LS + FS	2 - LS + FS	LS + FS
Delivery / pressure (L / MIN - BAR)	138 - 250	138+100 - 250/230	103,5 - 250
Hydraulic oil tank capacity (l)	120	120	120
Auxiliary hydraulic service on boom	●	●	●
Rear service line	-	-	-

Cab

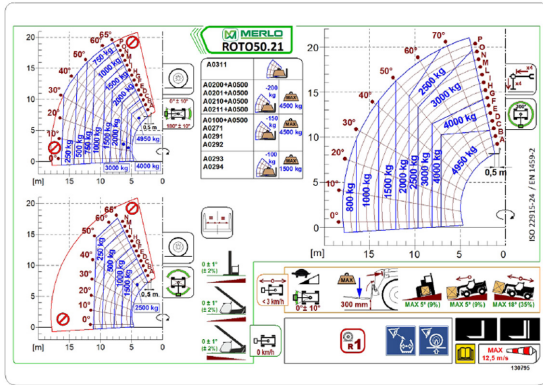
Cab finishing	PREMIUM	PREMIUM	PREMIUM
ASCS	Full	Full	Full
FOPS II Cab	●	●	●
ROPS Cab	●	●	●
Controls	Electronic joystick control	Electronic joystick control	Electronic joystick control
Tilting cab	-	●	-
Reverse shuttle	Dual reverse	Dual reverse	Dual reverse

Configuration

Hydropneumatic Suspension CS Merlo	-	-	-
Hydropneumatic Suspension BSS Merlo	-	-	-
Hydropneumatic Suspension EAS Merlo	●	●	-
Work lights on cab	○	○	○
Sun-shade in the cab	●	●	●
Tac-lock	●	●	●
Pre-arrangement for aerial work platform	●	●	●
Two floating forks	●	●	●
Pedal Inching-Control	-	-	-
Permanent four-wheel drive	●	●	●
All wheel steering	●	●	●
Three steering way	●	●	●
Standard tyres			
OPT tyres			
Hydraulically controlled stabilizers			
Turret rotation			
Tractor type approval			
Pneumatic brakes (ton)			
Hydraulic brakes (ton)			
PTO			
3-point rear linkage			



- not available
● standard
○ optional



ISO 9319-1/ISO 9319-2/EN 1459-2

M

Dimensions



	ROTO50.21S	ROTO50.21SPUS	ROTO50.21
A - Length	6830	-	-
C - Wheelbase	3070	5370	5370
F - Ground clearance	370	370	370
H - Width	2430	2430	2430
M - Cabin width	1010	1010	1010
P - Height	3120	3120	3120
R - Turning radius at wheels	3850	3850	3850
S - Turning radius at forks	6100	6100	6100

Your Merlo dealer

MERLO S.P.A.

Via Nazionale, 9

12010 S. Defendente di Cervasca, (Cuneo) Italia

Tel. +39 0171 614111

Fax +39 0171 684101

info@merlo.com

www.merlo.com



