

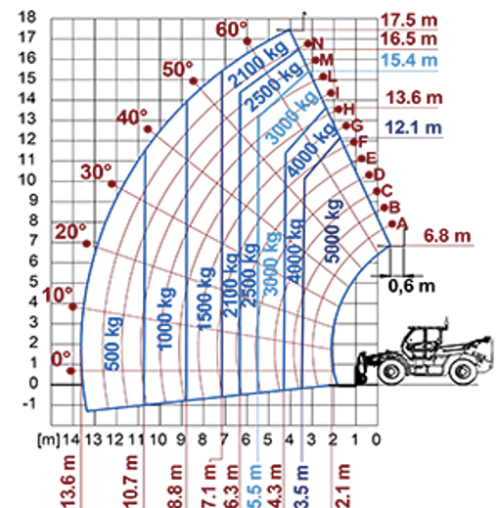
# High Capacity Telehandlers

Regulatory area: AU  
P50.18HM

**MERLO**



| MODEL                        | P50.18HM |
|------------------------------|----------|
| A - Length (mm)              | 6230     |
| C - Wheelbase (mm)           | 3290     |
| F - Ground clearance (mm)    | 450      |
| H - Width (mm)               | 2520     |
| M - Cab width (mm)           | 1010     |
| P - Height (mm)              | 2850     |
| S - Fork steering range (mm) | 5480     |



| MODEL                                | P50.18HM                  |
|--------------------------------------|---------------------------|
| <b>PERFORMANCE</b>                   |                           |
| Unladen weight (kg)                  | 16250                     |
| Maximum load capacity (kg)           | 5000                      |
| Lift height (m)                      | 17.4                      |
| Maximum reach (m)                    | 13                        |
| Boom side-shift (mm)                 | +/- 440                   |
| Frame levelling (%)                  | +/-8                      |
| Boom section                         | 4                         |
| <b>POWERTRAIN</b>                    |                           |
| Engine                               | FPT NEF45                 |
| Range/Cylinders (l)                  | 4.5/4                     |
| Engine power (kW/HP)                 | 125/170                   |
| Anti-pollution technology            | Stage V - SCR + DOC + DPF |
| Reversible Fan                       | —                         |
| Maximum speed (km/h)                 | 40                        |
| Fuel tank capacity (l)               | 150                       |
| AdBlue tank capacity (l)             | 43                        |
| Hydrostatic transmission EPD         | CVTronic                  |
| Electronic joystick                  | ●                         |
| Axles                                | Axial                     |
| Brakes                               | Wet discs                 |
| <b>HYDRAULIC</b>                     |                           |
| Delivery / pressure (bar-l/min)      | 158-230                   |
| Hydraulic oil tank capacity (l)      | 149                       |
| <b>CAB</b>                           |                           |
| ASCS                                 | Full                      |
| FOPS/ROPS Cab                        | ●                         |
| Tilting cab                          | —                         |
| <b>CONFIGURATION</b>                 |                           |
| Hydropneumatic Suspension CS Merlo   | —                         |
| Hydropneumatic Suspension EAS Merlo  | —                         |
| Permanent four-wheel drive           | ●                         |
| Three steering way                   | ●                         |
| Standard tyres                       | 17.5-25"                  |
| Hydraulically controlled stabilizers | —                         |
| Turret rotation                      | —                         |
| PTO (rpm)                            | —                         |
| 3-point rear linkage (kg)            | —                         |

— NOT AVAILABLE • ● STANDARD • ○ OPTIONAL

**Your Merlo dealer**



**MERLO S.p.A.**

Via Nazionale, 9  
12010 S. Defendente di Cervasca, (Cuneo) Italia  
Tel. +39 0171 614111

info@merlo.com www.merlo.com

Release 24/11/2025 - 14:19

Data, specifications and illustrations contained in this document are indicative and not binding. Merlo S.p.A. pursues a policy of continuous research and development; therefore, products may differ from those described or be subject to change without prior notice. The products shown may include optional equipment.