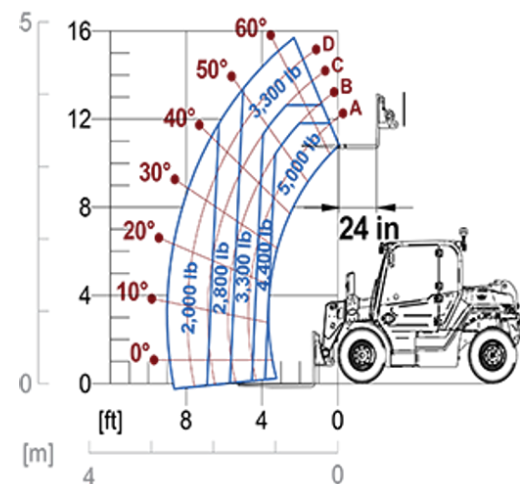


Electric Telehandlers

Regulatory area: NA

EW25.5

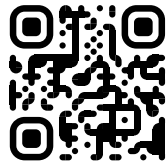


MODEL	EW25.5-60	EW25.5-90
A - Lenght (in)	130.7	130.7
C - Wheelbase (in)	82.7	82.7
F - Ground clearance (in)	9.1	9.1
H - Width (in)	60.6	60.6
M - Cab width (in)	30.3	30.3
P - Height (in)	77.8	77.8
S - Fork steering range (in)	87.8	106.3

MODEL	EW25.5-60	EW25.5-90
PERFORMANCE		
Unladen weight (lb)	10913	10913
Maximum load capacity (lb)	5511	5511
Lift height (ft)	15.7	15.7
Maximum reach (ft)	8.5	8.5
Boom section	2	2
POWERTRAIN		
Engine	2 Electrical	3 Electrical
Battery (type and V)	Lead Acid - 48 V	Lead Acid - 48 V
Nominal capacity	960 Ah	960 Ah
Engine power (kW/HP)	44/60	60/90
Maximum speed (mph)	15.5	15.5
Traction	2WD, 3 traction modes	4WD, 3 traction modes
Autonomy (hours)	8h	8h
Recharge time	9h (220V)	9h (220V)
Recharge voltage	220V/400V	220V/400V
Battery charger	●	●
HYDRAULIC		
Hydraulic pump	G+ FS	G+ FS
Hydraulics pressure (gal/min-psi)	11.1 – 3045,8	11.1 – 3045,8
CAB		
Closed cab	○	○
FOPS LIV I and ROPS	●	●
Controls	Electronic joystick control	Electronic joystick control
Reverse shuttle	Dual Reverse	Dual Reverse
CONFIGURATION		
Battery fast replacement	●	●
Work lights on cab (LED)	●	●
Rotating beacon and blue reverse light	●	●
Two steering wheels	Rear	Rear
Front standard tyres	10/75-15.3"	10/75-15.3"
Rear standard tyres	7.5-15"	7.5-15"
E-holder brakes	●	●
Regenerative braking	●	●
Automatic parking brake	●	●

— NOT AVAILABLE • ● STANDARD • ○ OPTIONAL

Your Merlo dealer



MERLO S.P.A.
 Via Nazionale, 9
 12010 S. Defendente di Cervasca, (Cuneo) Italia
 Tel. +39 0171 614111
info@merlo.com www.merlo.com
 Release 20/11/2025 - 11:12

Data, specifications and illustrations contained in this document are indicative and not binding. Merlo S.p.A. pursues a policy of continuous research and development; therefore, products may differ from those described or be subject to change without prior notice. The products shown may include optional equipment.