

Attachments

U.S.A. version



[October 2024]



Y497USA
1024

 **MERLO**

Merlo carriages

ZM2S carriage

CARRIAGE MODEL	WIDTH (in -ft)	HEIGHT (in -ft)	MAX CAPACITY (lb)
ZM2 S	33	17	5511

ZM2 carriage

CARRIAGE MODEL	WIDTH (in -ft)	HEIGHT (in -ft)	MAX CAPACITY (lb)
ZM2	46,8	15	5500/9900

ZM3 - ZM3 3TL* carriage

CARRIAGE MODEL	WIDTH (in -ft)	HEIGHT (in -ft)	MAX CAPACITY (lb)
ZM3	46,8	27,8	9900/16530
ZM3 3TL	46,8	27,8	9900/16530

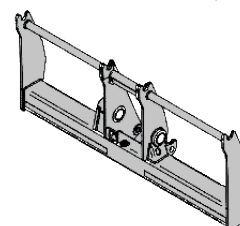
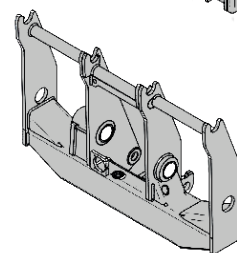
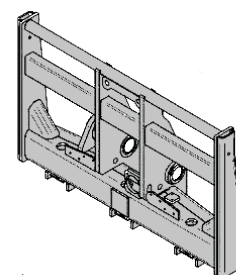
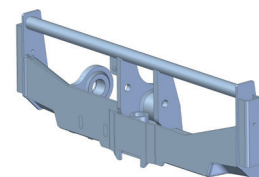
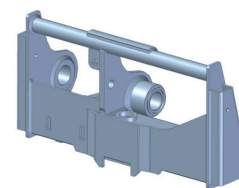
*Triple Tac-Lock

ZM4 carriage

CARRIAGE MODEL	WIDTH (in -ft)	HEIGHT (in -ft)	MAX CAPACITY (lb)
ZM4	53,5	37,3	17630/26455

ZM4 XL carriage

CARRIAGE MODEL	WIDTH (in -ft)	HEIGHT (in -ft)	MAX CAPACITY (lb)
ZM4	91,1	37,3	17630/26455

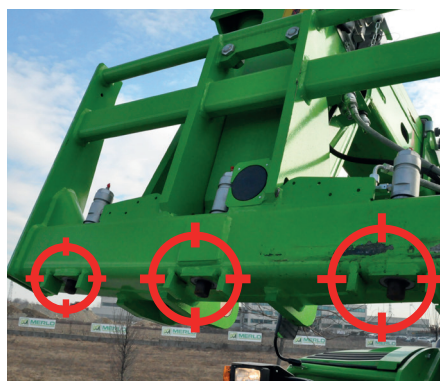


Tac-Lock

Tac-Lock: hydraulic attachment clamping system from the cab



Standard Tac-Lock



Triple Tac-Lock



Tac-Lock ZM4

Machine ranges

COMPACT THL	MEDIUM CAPACITY THL	STABILIZED THL	HIGH CAPACITY THL	ROTATING THL	TRACTOR THL
ZM2S	ZM2	ZM2	ZM3	ZM2	ZM2
EW25.5-60	TF35.7-140	P35.11 EE4	TF50.8T-170-HF	ROTO 40.18	MF34.7-140
EW25.5-90	TF35.7CS-140	P40.13 EE4	TF50.8TCS-170-HF	ROTO 40.18S	MF34.7CS-140
	TF33.9-140	P40.13 Plus	TF50.8TCS-170-CVT-HF	ROTO 50.21	MF34.7CS-140-CVT
ZM2	TF33.9CS-140	P40.13CS TOP	TF45.11T-170-HF	ROTO 50.21S PLUS	MF44.9CS-170-CVT
P27.6 EE4 PLUS	TF42.7-136	P40.17 EE4	TF45.11TCS-170-HF	ROTO 50.26	
P27.6 EE4 TOP	TF42.7CS-136	P40.17 PLUS	TF45.11TCS-170-CVT-HF	ROTO 50.26S	
P27.6 TOP	TF42.7TT-136	P40.17CS TOP	TF65.9T-170-HF	ROTO 50.26S PLUS	
TF27.6 EE4	TF42.7TT CS-136		TF65.9TCS-170-HF	ROTO 50.30S PLUS	
TF33.7-115	TF38.10-136	ZM3	TF65.9TCS-170-CVT-HF	ROTO 50.35S PLUS-CVT	
TF33.7-115L	TF38.10 CS-116	P50.17 TOP	P72.10 PLUS		
TF30.9-115	TF38.10 CS-136	P50.18 PLUS	P50.18HM	ZM3	
TF30.9-115L	TF38.10TT-136	P50.18CS TOP	P65.14HM	ROTO 70.24S PLUS	
	TF38.10TT CS-136			ROTO 70.28S PLUS-CVT	
			ZM4		
			P120.10HM		

Legend

ABBREVIATIONS

Compact Thl	COMP
Medium capacity Thl	MC
Tractor Thl	MF
Stabilized Thl	STAB
High capacity Thl	HC
Rotating Thl	ROTO

APPLICATIONS

	Agricultura
	Building
	Industry
	Ecology

SYMBOLS

●	applicable
-	not applicable

WARNING: La presente This information is by way of example only and does not in any way authorize the combination of the attachment to the machine model cited. Consult the use and maintenance manual of the handler for the list of authorized attachments.

Merlo precision and technology

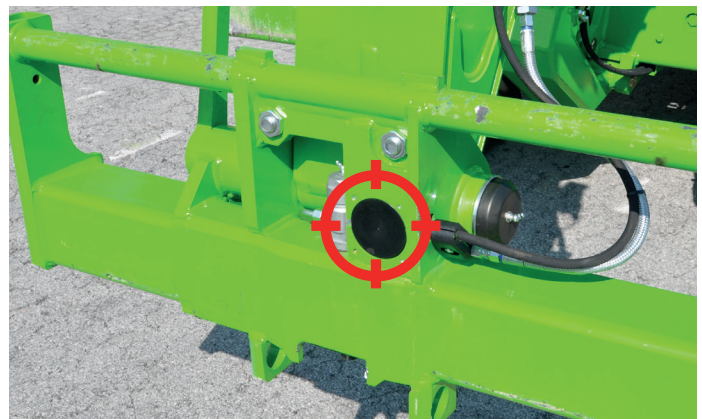
Dynamic load control

For the Merlo Group, safety is an absolute value: this is why the exclusive new generation Merlo ASCS (Adaptive Stability Control System) system has been designed. The purpose of this technology is to allow the operator to work in total safety, making the most of the telescopic handler's potential and the attachment used.

Automatic recognition of the attachment



Sensor on the attachment



Sensor on the carriage

The Merlo ASCS system allows the telehandler:

- to recognise the mounted attachment by automatically calibrating the vehicle's behaviour and reaction parameters. Thanks to specific load diagrams, the Merlo ASCS system is therefore able to maximise machine stability and adapt boom movements to the specific working situation;
- to analyse the values received from the load sensor, by determining, in real time, the actual capacity of the machine.

The operator can check the dynamic balance of the machine at any time, thanks to the traffic light on the front upright. When the operational stability limit is reached, the system first reduces the speed of the arm and then stops movement completely. All movements towards a position under safer conditions are permitted during this phase.

Depending on the implement in use, the system is able to vary the response of the machine and the speed of movements.

Under EN15000 standard, automatic activation of the working free zone is allowed when the machine is equipped with a shovel, which is recognised accordingly. A working area of up to 1 metre of reach and 10° of lift.

Within this area it is possible to operate without the control system blocking the movement of the implement in case of overload, facilitating digging operations and ensuring perfectly smooth movements.

All information is displayed on the LCD screen, allowing the operator to use the telescopic handler simply and safely.

The system is able to recognise all the attachments produced by TreEmme.



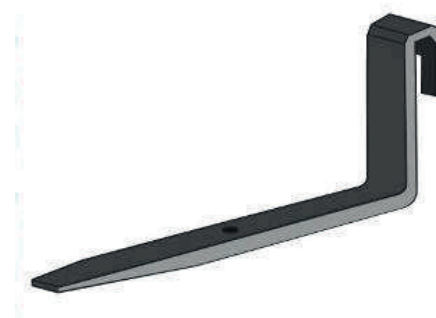
Contents

Merlo forks, fork carriers	6
Fem forks, fork carriers	7
Forks positioner	8
Concrete mixer	9
Lifting boom	10
Telescopic lifting boom	11
Fly jib	12
Fly jib with winch	13
Lifting hook on carriage	14
Mechanical bag holder	15
Hydraulic winch on carriage	16
Fixed platform	17
Fixed slewing platform	18
Extensible slewing platform	19
SPACE platform	20
Bricks handler	21
Digging bucket	22
Rehandling bucket	23
Bulk material bucket	24
Reinforced bulk material bucket	25
Multipurpose bucket (4x1)	26
Multipurpose bucket with grab	27
Bottom discharge bucket	28
Waste bucket	29
Cereal Pusher Blade	30
Fork for manure/straw with grab	31
Foldable tines bale fork with grapple	32
2/3 spikes folding fork for straw bales	33
4 spikes folding fork for straw bales with sliding protection	34
Handler for single round bale	35
Handler for double round bale	36
Log grabs	37
Double log clamp	38
Drum clamp	39
Tunnel ring holder boom	40
Materials Container	41

Merlo forks, fork carriers

Standard forks

SALES REF.		ZM	WEIGHT (lb)	LENGHT (in - ft)	MAX CAPACITY (lb)
PAIR	SINGLE		SINGLE	SINGLE	SINGLE
NEW A0326	A0326.1	ZM2S - ZM2	135	48-4	2750
A0300	A0300.1	ZM2	170	48-4	3860
A0311	A0311.1	ZM2	190	48-4	4960
A0327	A0327.1	ZM2	200	48-4	5520
A0315	A0315.1	ZM2	198	59-5	3860
A0302	A0302.1	ZM3	630	49-4	6620
A0323	A0323.1	ZM3	630	49-4	8280
A0305	A0305.1	ZM4	640	71-6	11000/13225
A0322	A0322.1	ZM4	640	71-6	11000



Extra large forks carriage

SALES REF.	ZM	WEIGHT (lb)	WIDTH (in - ft)	MAX CAPACITY (lb)
A0100	ZM2	291	75-6	8160
A0101	ZM3	463	76-6	13230



Carriage with extra long floating forks

SALES REF.	ZM	WEIGHT (lb)	WIDTH (in - ft)	LENGHT (in - ft)	MAX CAPACITY (lb)
				SINGLE	
NEW A0609	ZM2S	684	48-4	79-7	3970
A0605	ZM2	904	47-4	79-7	4850
A0606	ZM2	926	47-4	94-8	3970
A0607	ZM3	1279	48-4	79-7	7055
A0608	ZM3	1411	48-4	94-8	5950



Carriage with floating forks

SALES REF.	ZM	WEIGHT (lb)	WIDTH (in - ft)	MAX CAPACITY (lb)
NEW A0299	ZM2S - ZM2	550	47-4	6600
A0291	ZM2	639	47-4	8820
A0292	ZM2	672	47-4	8820
A0293*	ZM2	485	47-4	3300
A0294*	ZM2	507	47-4	3300
NEW A0298	ZM3	1060	47-4	16550

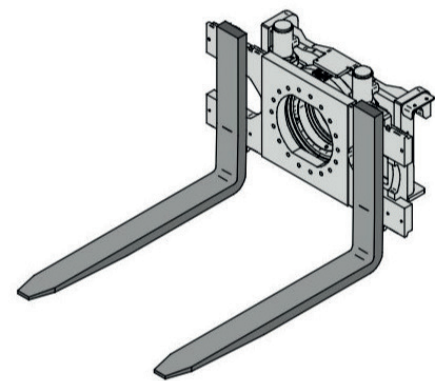


* slim version

Forks and fork holders - Merlo

Fork rotator

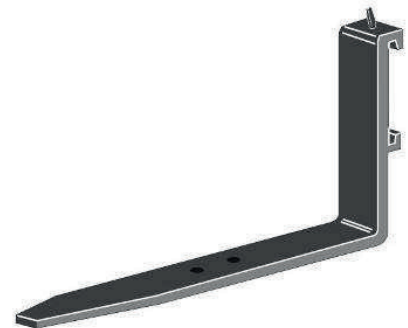
COMMERCIAL REF.	FEM COUPLING	ZM	WEIGHT (lb)	WIDTH (in - ft)	ROTATION (°)	MAX CAPACITY (lb)
A3216	IV	ZM3	2240	70-6	360	11000



Forks and fork holders - FEM

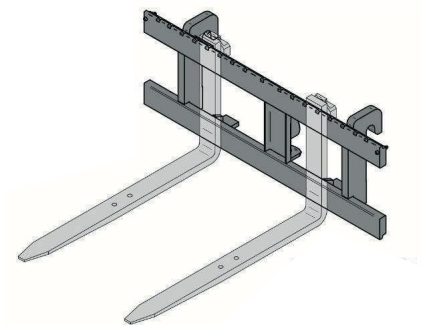
FEM forks

SALES REF.		FEM ATTACH.	WEIGHT (lb)	LENGHT (in - ft)		MAX CAPACITY (lb)
PAIR	SINGLE			SINGLE	SINGLE	
A0500	A0500.1	III	183	48-4		4740
NEW A0520	A0520.1	IV	285	48-4		6600
NEW A0524	A0524.1	IV	360	48-4		7900
A0525	A0525.1	IV	289	48-4		8280
NEW A0521	A0521.1	IV	500	48-4		11000



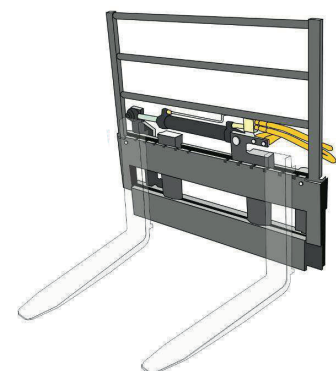
FEM forks carriage

SALES REF.	FEM ATTACH.	ZM	WEIGHT (lb)	WIDTH (in - ft)	MAX CAPACITY (lb)
NEW A0198	II	ZM2S - ZM2	1200	59-5	5500
A0200	III	ZM2	320	59-5	9920
A0201	III	ZM2	344	59-5	9920
A0210	III	ZM2	408	79-7	9920
A0211	III	ZM2	419	79-7	9920
A0230	IV	ZM3	683	59-5	16530
A0240	IV	ZM3	783	71-6	16530
NEW A0245	V	ZM4	1150	94-8	22050



Forks sideshifter on standard carriage

SALES REF.	FEM ATTACH.	ZM	WEIGHT (lb)	WIDTH (in - ft)	TRANSLATION MOVEMENT (in)	MAX CAPACITY (lb)
A0281	III	ZM2	904	53-4	+/- 6	8810
A0282	III	ZM2	838	53-4	+/- 6	8810
A0283	IV	ZM3	1235	53-4	+/- 6	15430





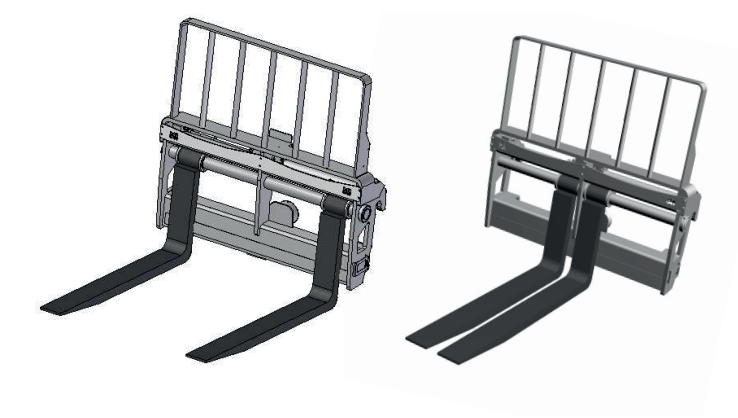
Fork positioner



Automatic fork positioner on ZM2, ZM3 carriage

FEATURES

- Allows the forks to be moved safely
- To be applied on standard ZM2, ZM3 carriage
- Extreme versatility of use
- Hydraulic actuator



COMMERCIAL REF. CODE	ZM	WEIGHT (lb)	WIDTH (in - ft)	MAX CAPACITY (lb)
NEW A0270C	ZM2S - ZM2	700	47-4	9920
A0271	ZM2	694	47-4	9920
A0272	ZM3	1102	47-4	16530

REQUIREMENTS	OPTIONS	LIMITATIONS
-	-	-



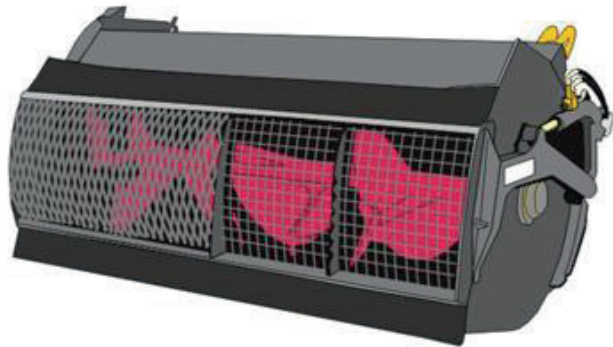
Concrete mixer



Designed to mix and handle concrete having a maximum density of 5511 lb/ft³

FEATURES

- Hydraulic hatch opening and closing, even with radio control
- Hydraulic control of propeller protective grid, with automatic closure device
- Wear resistant, replaceable steel propellers
- Rotating chute for delivering concrete



COMMERCIAL REF. CODE	WEIGHT (lb)	WIDTH (in - ft)	LOAD CAPACITY (ft³ - Yd³)	MAX CAPACITY (lb)	MACHINE RANGE					
					COMP	MC	MF	STAB	HC	ROTO
A1565	1521	42-3	12 - 0.46	1930	●	●	●	●	-	-
A1570	1653	67-6	18 - 0.65	2760	●	●	●	●	-	-
A1571	1653	67-6	18 - 0.65	2760	-	-	-	-	-	●
A1580	1940	88-7	26 - 0.98	4130	●	●	●	●	-	-
A1581	1940	88-7	26 - 0.98	4130	-	-	-	-	-	●
A1583	2249	88-7	26 - 0.98	4130	-	-	-	-	●	-

REQUIREMENTS	OPTIONS	LIMITATIONS
Oil continuous pumping	Extension chute (4.9 ft), unload hose (4.9 ft), radio control	-



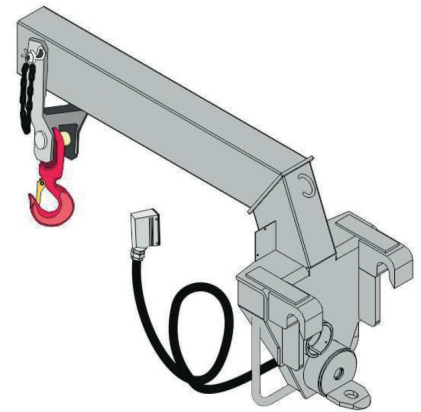
Lifting boom



Ideal attachment for handling suspended overhanging loads

FEATURES

- Type-approved safety hook fitted with safety tang slewing over 360°.
- Ideal for handling suspended loads
- Load limiter fitted as standard
- Sturdy structure



COMMERCIAL REF. CODE	WEIGHT (lb)	WIDTH (in - ft)	LENGHT° (in - ft)	MAX CAPACITY (lb)	MACHINE RANGE					
					COMP	MC	MF	STAB	HC	ROTO
NEW A1124C*	275	20-2	53-4	3300	●	-	-	-	-	-
A1124B	276	20-2	53-4	3300	●	-	-	-	-	-
A1118B	276	19-2	53-4	4850	●	●	●	●	-	●
A1119B	419	22-2	53-4	7720	-	-	-	-	●	●
NEW A1129B	910	22-2	68-6	13200	-	-	-	-	●	-

*lowered, °carriage - hook centre distance

REQUIREMENTS	OPTIONS	LIMITATIONS
-	-	-



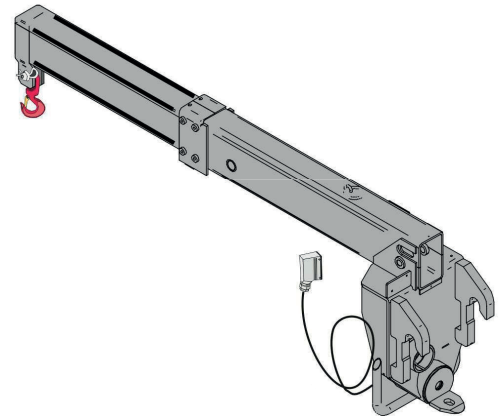
Telescopic lifting boom



Attachment designed for handling suspended overhanging loads

FEATURES

- Type-approved safety hook fitted with safety tang slewing over 360°.
- Ideal for handling suspended loads
- Load limiter fitted as standard
- Extendable boom (28 in)



COMMERCIAL REF. CODE	WEIGHT (lb)	WIDTH (in- ft)	LENGHT* (in - ft)	MAX CAPACITY (lb)	MACHINE RANGE					
					COMP	MC	MF	STAB	HC	ROTO
A1123B	485	20-2	57-5	3300	-	●	●	●	-	●
A1127B	763	20-2	65-5	4850	-	-	-	-	●	●

*carriage – hook centre distance

REQUIREMENTS	OPTIONS	LIMITATIONS
-	-	-



Fly jib



Ideal for lifting, transport and positioning of suspended loads

FEATURES

- High stiffness, low-weight trellis structure
- Type-approved safety hook fitted with safety tang slewing over 360°.
- Load limiter fitted as standard
- Available in various lengths



COMMERCIAL REF. CODE	WEIGHT (lb)	WIDTH (in - ft)	LENGHT® (in - ft)	MAX CAPACITY (lb)	MACHINE RANGE					
					COMP	MC	MF	STAB	HC	ROTO
NEW A1230C	275	16-1	127-11	880	●	-	-	-	-	-
A1230B	276	16-1	127-11	880	●	-	-	-	-	-
A1200B	247	16-1	127-11	1320	●	●	●	●	-	●
A1210B	265	17-1	75-6	3300	●	●	●	●	-	●
A1225B	408	18-1.5	197-16	1100	-	-	-	-	-	●
A1220B	326	18-1.5	146-12	1980	-	-	-	-	●	●
NEW A1221B	300	17-1	78-6	4420	-	-	-	-	●	●

*carriage – hook centre distance

REQUIREMENTS	OPTIONS	LIMITATIONS
-	Fly jib transport equipment	-



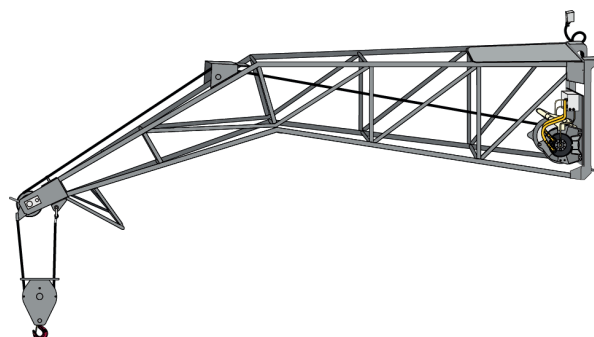
Fly jib with winch



Ideal for lifting, transport and positioning of suspended loads

FEATURES

- Type-approved safety hook block fitted with safety tang slewing over 360°.
- High stiffness, low-weight trellis structure
- Several hook travels are available based on model
- Load limiter fitted as standard



COMMERCIAL REF. CODE	WEIGHT (lb)	LENGHT (in - ft)	MAX HOOK TRAVEL (yd)	MAX CAPACITY (lb)	MACHINE RANGE					
					COMP	MC	MF	STAB	HC	ROTO
NEW A1330C	475	140-12	31	880	●	-	-	-	-	-
A1330B	474	140-12	31	880	●	-	-	-	-	-
A1300B	452	140-12	31	1320	●	●	●	●	-	●
A1310B	635	78-6	33	3300	●	●	●	●	-	●
A1215B	639	61-5	38	4400	-	-	-	●	-	●
A1320B	672	152-13	25	1980	-	-	-	-	●	●
A1321B	728	79-7	38	4400	-	-	-	-	●	●

REQUIREMENTS	OPTIONS	LIMITATIONS
-	Fly jib transport equipment	-



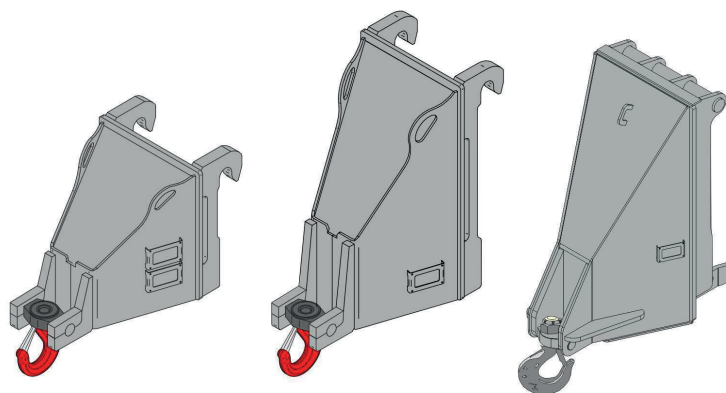
Lifting hook on carriage



Attachment designed for lifting and handling suspended loads

FEATURES

- Ideal for the construction and industry sectors
- Type-approved safety hook fitted with safety tang slewing over 360°.
- Compact attachment
- Possibility of reaching the machine's maximum capacity



COMMERCIAL REF. CODE	WEIGHT (lb)	LENGHT* (in - ft)	MAX CAPACITY (lb)	MACHINE RANGE					
				COMP	MC	MF	STAB	HC	ROTO
A1000	220	22-2	11000	●	●	●	●	-	●
A1001	326	22-2	16530	-	-	-	-	●	●
A1003	705	27-2	26450	-	-	-	-	●	-

*carriage - hook centre distance

REQUIREMENTS	OPTIONS	LIMITATIONS
-	-	-



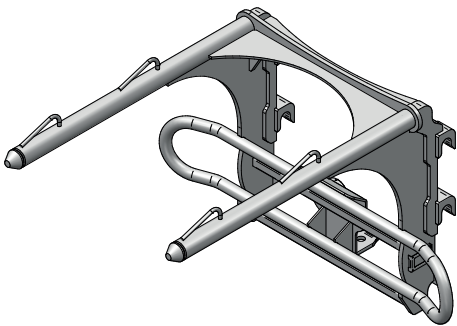
Big Bag handler



Attachment designed to lift and handle big bags using 1, 2 or 4 hooks

FEATURES

- Tubular structure to avoid the risk of damaging the big bags
- Presence of 4 stops to prevent slipping during manoeuvring
- Raised coupling structure to prevent damage to the roof of the trailer during loading
- Maximum safety when handling big bags



COMMERCIAL REF. CODE	WEIGHT (lb)	LENGHT (in - ft)	MAX CAPACITY (lb)	MACHINE RANGE					
				COMP	MC	MF	STAB	HC	ROTO
NEW A2420	510	65-5	5500	●	●	●	●	●	●

REQUIREMENTS	OPTIONS	LIMITATIONS
-	-	-



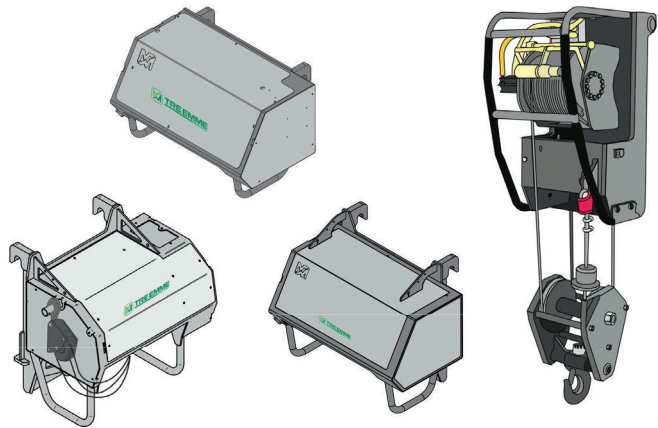
Hydraulic winch on carriage



Attachment designed for lifting suspended loads

FEATURES

- Fitted with an idler system to ensure cable-drum adherence
- Support available for transporting a winch on the machine (only for certain models - optional)
- Hook speed between 91 and 36 ft/min
- Simplified maintenance



COMMERCIAL REF. CODE	WEIGHT (lb)	WIDTH (in - ft)	MAX HOOK TRAVEL (yd)	MAX CAPACITY (lb)	MACHINE RANGE					
					COMP	MC	MF	STAB	HC	ROTO
NEW A2765	1270	49-4	32	8800	●	●	●	●	●	●
A2766	1100	49-4	38	10000	-	-	-	●	-	●
NEW A2767B	1340	44-4	18	11000	-	-	-	-	●	●
NEW A2768	1340	49-4	26-18	8830-13200	-	-	-	-	●	●
A2769	1323	48-4	38-26*	9900-14900*	-	-	-	-	●	●
A2772B	1500	48-4	18	22000	-	-	-	-	●	-

*dual towing/triple towing

REQUIREMENTS	OPTIONS	LIMITATIONS
-	Winch transport equipment (only for certain machine models)	-



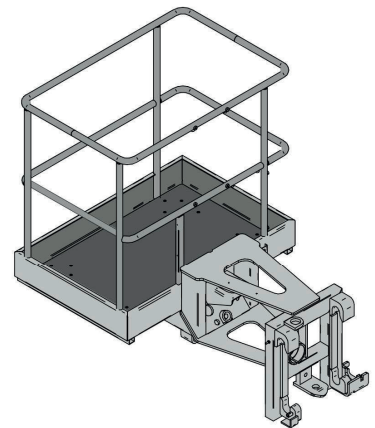
Fixed platform



Platform designed for safe lifting of 2 people

FEATURES

- Maximum safety
- Non-slip floor
- Easy access to work level
- Equipped with a load-sensing device with pre-alarm and alarm



COMMERCIAL REF. CODE	WEIGHT (lb)	WIDTH (in - ft)	MAX CAPACITY (lb)	PERSON	MACHINE RANGE					
					COMP	MC	MF	STAB	HC	ROTO
NEW A1776.1	460	45-4	400	1	●	-	-	-	-	-
NEW A1775.1	460	45-4	400	1	●	-	-	-	-	-
NEW A1774.1	500	45-4	500	2	-	●	●	-	-	-

REQUIREMENTS	OPTIONS	LIMITATIONS
Provision for platform	-	Not compatible with radial wheels. The combination of an overhead working platform to a machine must be expressly authorized by Merlo SPA



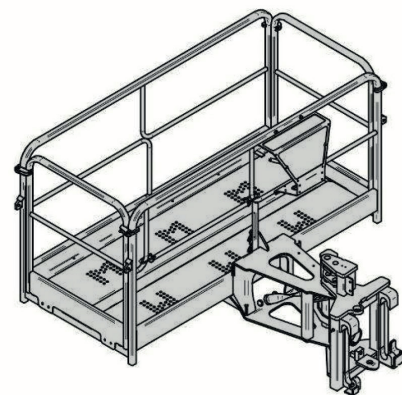
Fixed slewing platform



Platform designed for safe lifting of two/three people

FEATURES

- Hydraulically operated platform side rotation
- Equipped with control panel for managing machine and attachment movements
- Easy access to the platform area
- Version available with upper guard



COMMERCIAL REF. CODE	WEIGHT (lb)	WIDTH (in - ft)	MAX CAPACITY (lb)	PERSON	MACHINE RANGE					
					COMP	MC	MF	STAB	HC	ROTO
A1765.1	410	91-8	660	3	-	-	-	●	●	●
A1765A.1	892	91-8	660	3	-	-	-	-	●	●
A1769.1	1480	158-13	2200	3	-	-	-	-	-	●
NEW A1769A.1	1520	158-13	2200	3	-	-	-	-	●	●
NEW A1765B.1	1100	91-8	660	3	-	-	-	-	●	-

*version with upper guard

REQUIREMENTS	OPTIONS	LIMITATIONS
Provision for platform	-	The combination of an overhead working platform to a machine must be expressly authorized by Merlo SPA



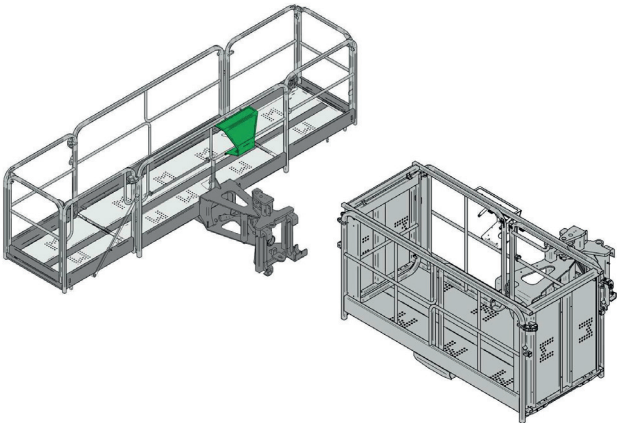
Extensible Slewing platform



Platform designed for safe lifting of two/three people

FEATURES

- Lightweight structure to provide larger work area
- Hydraulically operated platform side rotation
- Manual opening of the two extending structures, performed from inside and at height
- Load limiter fitted as standard



COMMERCIAL REF. CODE	WEIGHT (lb)	WIDTH (in - ft)	MAX CAPACITY (lb)	PERSON	MACHINE RANGE					
					COMP	MC	MF	STAB	HC	ROTO
A1766.1	1135	91-8	660	3	-	-	-	●	-	●
A1766A.1	1280	91-8	660	3	-	-	-	-	●	●
A1768.1	1250	91-8	1760	3	-	-	-	●	-	●
A1768A.1	1300	91-8	1760	3	-	-	-	-	●	●

REQUIREMENTS	OPTIONS	LIMITATIONS
Provision for platform	-	The combination of an overhead working platform to a machine must be expressly authorized by Merlo SPA



SPACE platform



Platform designed for safe lifting of two people

FEATURES

- Allows use in a broad range of situations
- Telescopic platform boom
- Negative and positive operativity
- Rotation on carriage axis by $+180^{\circ}/-130^{\circ}$



COMMERCIAL REF. CODE	WEIGHT (lb)	WIDTH (in - ft)	MAX CAPACITY (lb)	OPERATIVITY (ft)	MACHINE RANGE					
					COMP	MC	MF	STAB	HC	ROTO
NEW A1767.1	1356	50-4	440	36/-30	-	-	-	-	-	●
NEW A1767A.1	1356	50-4	440	36/-30	-	-	-	-	-	●

REQUIREMENTS	OPTIONS	LIMITATIONS
Provision for platform	-	The combination of an overhead working platform to a machine must be expressly authorized by Merlo SPA



Bricks handler



Attachment ideal for handling materials such as bricks and building blocks

FEATURES

- Ideal for every kind of industrial sector
- Access door to loading area fitted with closure lock
- Lightweight, sturdy structure
- It is compatible with ZM2 and ZM3 carriages



COMMERCIAL REF. CODE	WEIGHT (lb)	WIDTH (in - ft)	MAX CAPACITY (lb)	MACHINE RANGE					
				COMP	MC	MF	STAB	HC	ROTO
NEW A1901	441	47-4	2200	●	●	●	●	●	●

REQUIREMENTS	OPTIONS	LIMITATIONS
-	-	Only to be used for carrying materials .



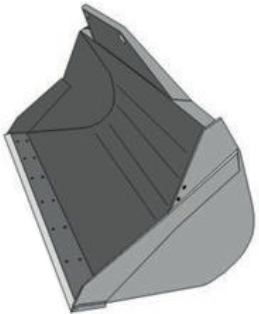
Digging bucket



Ideal for excavation and handling of material with a maximum density of 4.960 lb/ft³

FEATURES

- Monocoque body for better resistance
- Delivered with front cutter protection for on-road circulation
- Bucket loader cutter and wear blade with hardness 530HB
- Side reinforcement cutters



COMMERCIAL REF. CODE	WEIGHT (lb)	WIDTH (in - ft)	LOAD CAPACITY* (ft³ - Yd³)	MAX CAPACITY (lb)	MACHINE RANGE					
					COMP	MC	MF	STAB	HC	ROTO
NEW A0697	620	67-6	18 - 0.67	2480	●	-	-	-	-	-
A0699	661	72-6	19 - 0.72	2760	●	-	-	-	-	-
A0700	794	79-7	28 - 1.05	3970	●	-	-	-	-	●
A0698	816	83-7	30 - 1.11	4210	●	●	-	●	-	-
A0701	882	88-7	32 - 1.18	4460	●	●	●	●	-	●
A0706	948	96-8	35 - 1.31	4960	-	-	●	●	-	●
A0707	882	96-8	35 - 1.31	4960	-	-	-	-	●	●
A0704**	1246	96-8	42 - 1.57	5950	-	-	-	-	●	●
A0703	2006	96-8	64 - 2.35	8930	-	-	-	-	●	-

**triple Tac-Lock

*heaped full capacity

REQUIREMENTS	OPTIONS	LIMITATIONS
-	Teeth, Blade wear	-



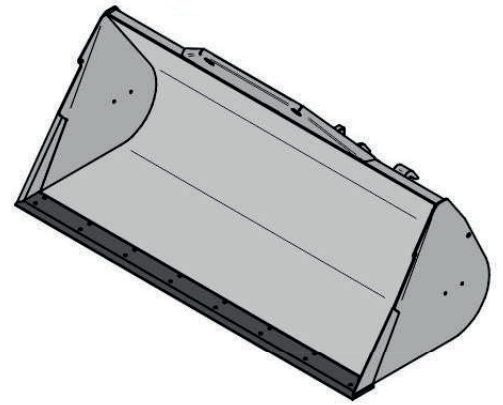
Rehandling bucket



Bucket designed to handle materials having a maximum density of 3.968 lb/ft³

FEATURES

- Suitable for levelling, shifting and handling
- Monocoque body with external reinforcements for better resistance
- Delivered with front cutter protection for on-road circulation
- Bucket loader cutter and wear blade with hardness 530HB



COMMERCIAL REF. CODE	WEIGHT (lb)	WIDTH (in - ft)	LOAD CAPACITY* (ft ³ - Yd ³)	MAX CAPACITY (lb)	MACHINE RANGE					
					COMP	MC	MF	STAB	HC	ROTO
NEW A0724	880	79-7	39 - 1.44	4365	●	-	-	-	-	-
A0710	860	88-7	44 - 1.63	4960	●	●	●	●	-	●
A0712	904	94-8	48 - 1.77	5360	●	●	●	●	-	●
A0717	1565	98-8	64 - 2.35	7140	-	-	-	-	●	●

*heaped full capacity

REQUIREMENTS	OPTIONS	LIMITATIONS
-	Teeth, Blade wear	-



Bulk Material Bucket



Bucket designed to handle bulk materials having a maximum density of 1.984 lb/ft³

FEATURES

- Ideal for bulk materials
- Monocoque body with external reinforcements for better resistance
- Sides with steel ribbing
- Wear blade with double bolted bevel available



COMMERCIAL REF. CODE	WEIGHT (lb)	WIDTH (in - ft)	LOAD CAPACITY* (ft ³ - Yd ³)	MAX CAPACITY (lb)	MACHINE RANGE					
					COMP	MC	MF	STAB	HC	ROTO
NEW A0723	940	67-6	49 - 1.81	2780	●	-	-	-	-	-
A0716	959	72-6	53 - 1.96	2980	●	-	-	-	-	-
A0713	959	79-7	60 - 2.22	3370	●	-	-	-	-	-
A0714	1069	88-7	64 - 2.35	3570	●	●	●	●	-	●
A0718	1014	83-7	67 - 2.49	3770	●	●	●	●	-	-
A0720	1080	94-8	71 - 2.62	3970	●	●	●	●	-	●
NEW A0720A***	1190	94-8	71 - 2.62	3970	●	●	●	●	-	-
NEW A0720B****	1120	94-8	71 - 2.62	3970	●	●	●	●	-	●
A0780	1334	94-8	88 - 3.27	4960	●	●	●	●	-	●
A0782	1532	98-8	106 - 3.92	5950	-	●	●	●	-	●
A0781**	1631	98-8	88 - 3.27	4960	-	-	-	-	●	●
R2200**	1962	98-8	106 - 3.92	5950	-	-	-	-	●	●
NEW A0785	2425	98-8	123 - 4.56	6950	-	-	-	-	●	-
A0786	3086	98-8	177 - 6.54	9920	-	-	-	-	●	-

*heaped full capacity - **triple Tac-Lock - *** central reinforcement - **** rear protection

REQUIREMENTS	OPTIONS	LIMITATIONS
-	Blade wear	-



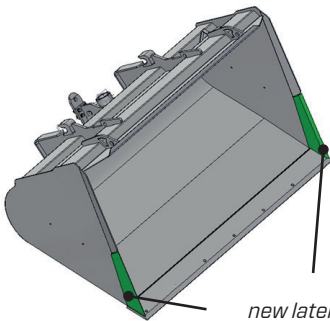
Reinforced bulk material bucket



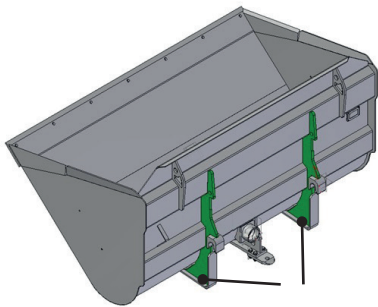
Reinforced bulk bucket for exceptional performance

FEATURES

- Extremely versatile bucket for countless applications
- Reinforced bucket structure compared to classic bucket
- The increased tilting angle makes the material to be moved easily
- Double layer wearing blade for longer operating life



new lateral
anti-wear devices



new m20 joints for
increased strength

COMMERCIAL REF. CODE	WEIGHT (lb)	WIDTH (in - ft)	LOAD CAPACITY (ft³ - Yd³)	MAX CAPACITY (lb)	MACHINE RANGE					
					COMP	MC	MF	STAB	HC	ROTO
A0730	1226	81-7	53 - 1.96	2980	-	-	-	-	-	-
A0731*	1455	89-7	64 - 2.35	3570	●	●	●	●	-	●
A0732*	1477	94-8	64 - 2.35	3570	●	●	●	●	-	●
A0733*	1576	94-8	71 - 2.62	3670	●	●	●	●	-	●
A0734*	1682	94-8	78 - 2.88	4365	-	●	●	●	-	-
A0735*	1775	98-8	88 - 3.27	4960	-	●	●	●	-	-
A0736*	1775	98-8	88 - 3.27	4960	-	-	-	-	●	-
A0737*	1896	98-8	106 - 3.92	5950	-	-	-	-	●	-
A0738*	2169	98-8	124 - 4.58	6945	-	-	-	-	●	-

NEW *triple Tac-Lock

REQUIREMENTS	OPTIONS	LIMITATIONS
-	-	-



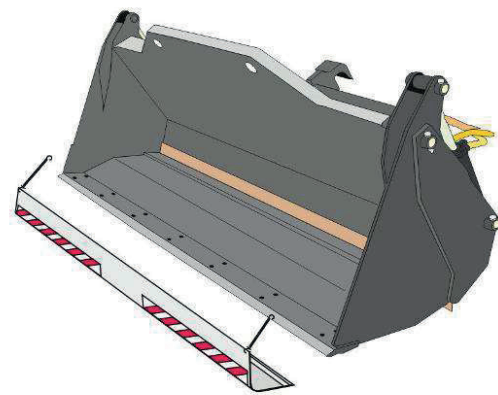
Multipurpose bucket (4x1)



Ideal attachment for various processing operations: excavation (max density 4.960 lb/ft³), rehandling (max density 3.968 lb/ft³), bulk handling (max density 1.984 lb/ft³)

FEATURES

- Suitable for levelling, pushing, excavating, handling
- Mobile part for unloading on to truck or trailers
- Triple Tack Lock as standard (excluding A0810)
- Delivered with front cutter protection for on-road circulation



COMMERCIAL REF. CODE	WEIGHT (lb)	WIDTH (in - ft)	BLADE WIDTH (in - ft)	LOAD CAPACITY* (ft³)	MAX CAPACITY (lb)	MACHINE RANGE					
						COMP	MC	MF	STAB	HC	ROTO
DIGGING BUCKET											
NEW A0809	1350	70-6	67-6	18	2500	●	-	-	-	-	-
A0810	1389	75-6	72-6	21	2980	●	-	-	-	-	-
A0800	1587	91-8	88-7	28	3970	●	●	●	●	●	●
A0820	1720	91-8	88-7	35	4960	●	●	●	●	●	●
REHANDLING BUCKET											
A0870	1852	91-8	88-7	44	4960	●	●	●	●	●	●
BULK MATERIAL BUCKET											
A0860	2690	102-8	98-8	106	5950	-	-	-	-	●	-
			*heaped full capacity								

REQUIREMENTS	OPTIONS	LIMITATIONS
-	Teeth (excavation only), Blade wear	-



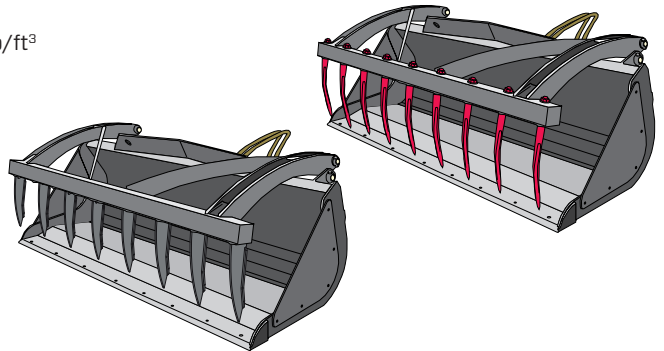
Multipurpose bucket with grab



Attachments designed to handle materials having a maximum density of 3.968 lb/ft³

FEATURES

- Monocoque body for better resistance
- Removable sides for more volume
- Available with welded or forged teeth, with closure flush with or against walls to meet any operating requirement
- Hydraulically-operated grab



COMMERCIAL REF. CODE	WEIGHT (lb)	WIDTH (in - ft)	LOAD CAPACITY (ft ³ - Yd ³)	MAX CAPACITY (lb)	MACHINE RANGE					
					COMP	MC	MF	STAB	HC	ROTO
NEW A0835	1096	72-6	25 - 0.92	2780	●	-	-	-	-	-
A0836	1096	72-6	25 - 0.92	2780	●	-	-	-	-	-
A0836B	1180	72-6	25 - 0.92	2780	●	-	-	-	-	-
A0841	1257	79-7	32 - 1.18	3750	●	●	●	●	-	-
A0841B	1330	79-7	32 - 1.18	3750	●	●	●	●	-	-
A0840	1334	88-7	35 - 1.31	4190	●	●	●	●	-	-
A0840B	1380	88-7	35 - 1.31	4190	●	●	●	●	-	-
A0852	1312	83-7	39 - 1.44	4365	●	●	●	●	-	-
A0838	1455	94-8	42 - 1.57	4760	●	●	●	●	-	-
A0838B	1460	94-8	42 - 1.56	4760	●	●	●	●	-	-
A0843	1543	94-8	53 - 1.96	5950	-	●	●	●	-	-
A0843B	1630	94-8	53 - 1.96	5950	-	●	●	●	-	-
A0846	1773	94-8	83 - 3.07	9330	-	-	-	-	●	-
NEW A0846B	1920	94-8	83 - 3.07	9330	-	-	-	-	●	-

*B Welded Teeth

REQUIREMENTS	OPTIONS	LIMITATIONS
-	Blade wear	-



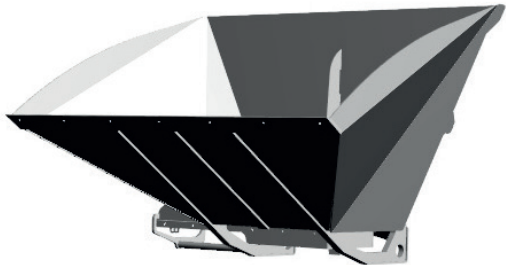
Bottom discharge bucket



Cereal bucket with hydraulically actuated hatch having a maximum density of 1.984 lb/ft³

FEATURES

- Ideal for cereal and other bulk materials
- It allows the material to be discharged without carriage movement
- Hatch is open/closed hydraulically
- Double-layer wearing blade available in steel or in polymer material



COMMERCIAL REF. CODE	WEIGHT (lb)	WIDTH (in - ft)	LOAD CAPACITY (ft³ - Yd³)	MAX CAPACITY (lb)	MACHINE RANGE					
					COMP	MC	MF	STAB	HC	ROTO
A0861	1226	98-8	71 - 2.62	3970	●	●	-	●	-	●
A0862	1543	98-8	88 - 3.27	4960	-	-	-	-	●	-

REQUIREMENTS	OPTIONS	LIMITATIONS
-	-	-



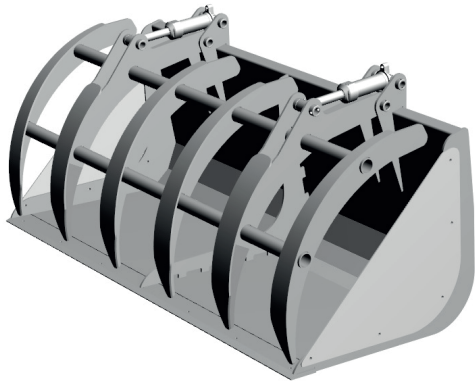
Waste bucket



Bucket designed to move garbage and recycling material

FEATURES

- Grab designed to safely clench the material
- Can be used with materials of variable density
- Strong and resitant structure
- Removable lateral side panels included



COMMERCIAL REF. CODE	WEIGHT (lb)	WIDTH (in - ft)	LOAD CAPACITY (ft³ - Yd³)	MAX CAPACITY (lb)	MACHINE RANGE					
					COMP	MC	MF	STAB	HC	ROTO
A0872	1764	94-8	71 - 2.62	3970	●	●	●	●	●	●

REQUIREMENTS	OPTIONS	LIMITATIONS
-	-	-



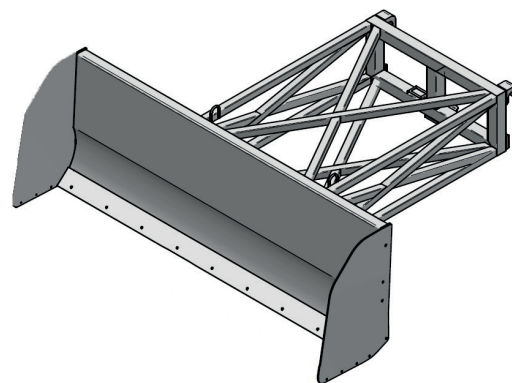
Cereal pusher blade



Pusher blade ideal for cereal pushing and handling

FEATURES

- Light and practical attachments to easily push cereals
- Extension frame designed for maximum strenght and visibility
- Provided with a rubber wearing blade to esase the sliding movement
- Lateral support pads in ertalon material to prevent floor damage



COMMERCIAL REF. CODE	WEIGHT (lb)	BLADE WIDTH (in - ft)	BLADE HEIGHT (in - ft)	EXTENSION LENGHT (in - ft)	MACHINE RANGE					
					COMP	MC	MF	STAB	HC	ROTO
A0905	1060	102-8	35-3	70-6	●	●	●	●	-	-
NEW A0906	1190	103-8	45-4	125-10	-	-	-	-	●	-

REQUIREMENTS	OPTIONS	LIMITATIONS
-	-	-



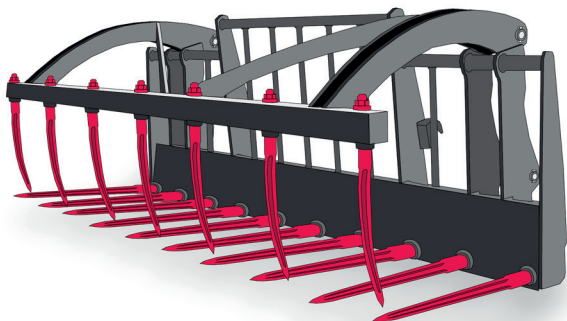
Fork for manure/straw with grab



Designed to handle manure with straw content having a maximum density of 1.763 lb/ft³

FEATURES

- High-penetration tips
- Reinforced structure
- Hydraulically-operated grab
- Version without grab available on request



COMMERCIAL REF. CODE	WEIGHT (lb)	WIDTH (in - ft)	MAX CAPACITY (lb)	MACHINE RANGE					
				COMP	MC	MF	STAB	HC	ROTO
WITH GRAB									
NEW A2308	1280	90-7	4400	●	-	-	-	-	-
A2301	1142	77-6	3300	●	●	●	●	-	-
NEW A2307	1058	72-6	3300	●	-	-	-	-	-
A2300	1279	90-7	4400	●	●	●	●	-	-
NEW A2303	1320	90-7	4400	-	-	-	-	●	-
WITHOUT GRAB									
A2306	670	89-7	4400	●	●	●	●	-	-

REQUIREMENTS	OPTIONS	LIMITATIONS
-	additional side teeth	-



Foldable tines bale fork with grapple



Fork for loading one or more big bales, with hydraulically - operated top jaw

FEATURES

- Interchangeable spikes which tilt back against the carriage for safe transportation, made of high resistance steel
- Conical cross-section for better penetration of the bale
- 33 in or 49 in long spikes can be supplied upon request



COMMERCIAL REF. CODE	WEIGHT (lb)	WIDTH (in - ft)	MAX. HEIGHT GRAPPLE (in - ft)	MAX CAPACITY (lb)	MACHINE RANGE					
					COMP	MC	MF	STAB	HC	ROTO
NEW A2319	530	41-3	101-8	3310	●	●	●	-	-	-
A2320	530	41-3	101-8	3310	●	●	●	●	-	●
NEW A2324	530	41-3	101-8	3310	●	●	●	-	-	-

REQUIREMENTS	OPTIONS	LIMITATIONS
-	-	-



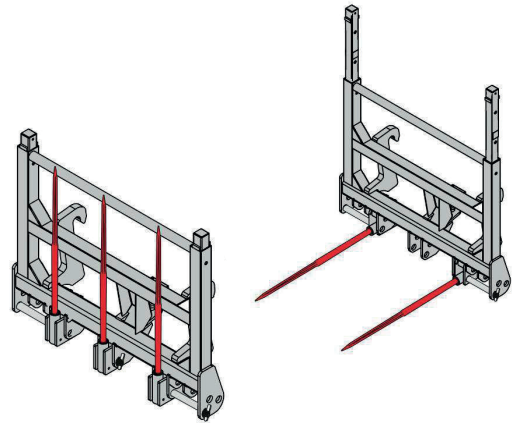
2/3 spikes folding fork for straw bales



Attachment suitable for handling one or two bales

FEATURES

- Extractable sliding upper guard.
- Interchangeable and tip-over high-penetration tines
- Reinforced structure
- Different tine lengths depending on model



COMMERCIAL REF. CODE	WEIGHT (lb)	N° TIPS	LENGHT TINES (in - ft)	WIDTH (in - ft)	MAX CAPACITY (lb)	MACHINE RANGE					
						COMP	MC	MF	STAB	HC	ROTO
NEW A2337	485	1	33-3	55-5	3300	●	-	-	-	-	-
A2331	485	3	33-3	55-5	3300	●	●	●	●	-	-
A2332	507	3	41-3	55-5	3300	●	●	●	●	-	-
A2333	529	3	48-4	55-5	3300	●	●	●	●	-	-
A2334	485	2	48-4	55-5	2200	●	●	●	●	-	-
NEW A2336	500	3	48-4	55-5	3300	-	-	-	-	●	-

REQUIREMENTS	OPTIONS	LIMITATIONS
-	-	-



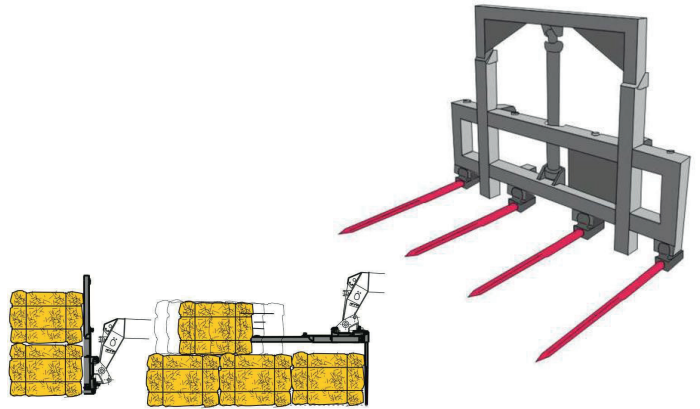
4 spikes folding fork for straw bales with sliding protection



Attachment suitable for handling one or two bales

FEATURES

- Suitable for storing bales up to roof level
- Hydraulically-operated height-adjustable protection
- Interchangeable and tip-over high-penetration tips
- Guard height from 1.320 mm to 1.900 mm



COMMERCIAL REF. CODE	WEIGHT (lb)	WIDTH (in - ft)	MAX CAPACITY (lb)	MACHINE RANGE					
				COMP	MC	MF	STAB	HC	ROTO
A2340	705	68-6	3300	●	●	●	●	-	-
NEW A2341	890	68-6	8800	-	-	-	-	●	-

REQUIREMENTS	OPTIONS	LIMITATIONS
-	-	-



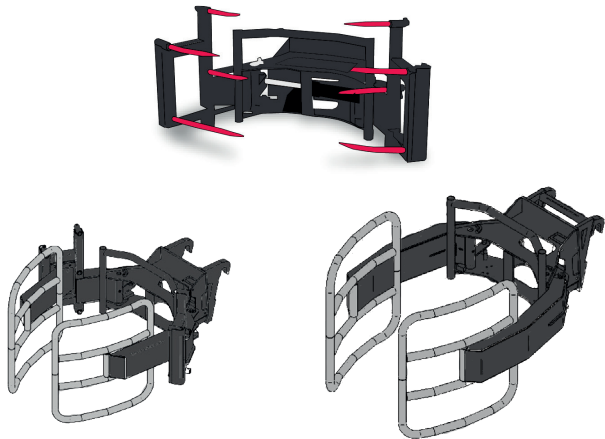
Handler for single round bale



Attachment designed for handling round bales

FEATURES

- Version available for round bales with or without bands
- Easy transitions from banded to non-banded rotary bales for multi-purpose versions
- Available for various bale dimensions
- Independent closure movement for individual sides



COMMERCIAL REF. CODE	WEIGHT (lb)	WIDTH (in - ft)	ROTARY BALE DIAMETER		MAX CAPACITY (lb)	MACHINE RANGE					
			ØP (in)	ØF (in)		COMP	MC	MF	STAB	HC	ROTO
A2407	419	58-5	47-79	-	2650	●	●	●	●	●	-
A2408	595	59-5	47-80	55-59	2650	●	●	●	●	●	-
A2405	712	59-5	47-81	55-71	2650	●	●	●	●	●	-
A2402	463	48-4	-	55-59	2200	●	●	●	●	●	-
A2406	529	47-4	-	55-71	2200	●	●	●	●	●	-
NEW A2416	400	59-5	48-79	-	2600	-	-	-	-	●	-
NEW A2418	780	48-4	56-71	56-71	2600	-	-	-	-	●	-
NEW A2419	660	59-5	-	56-71	2200	-	-	-	-	●	-

ØP: round bale without band

ØF: round bale with band

REQUIREMENTS	OPTIONS	LIMITATIONS
-	-	-



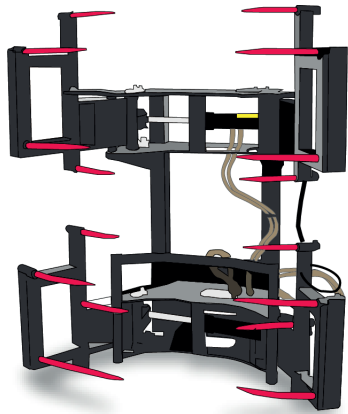
Handler for double round bale



Attachment designed to handle one or two unwrapped round bales

FEATURES

- Possibility to control the handlers simultaneously or independently* (only on preset machines)
- Possibility to handle 1 or 2 bales at a time
- Light and resistant structure
- Independent closure movements for each side



COMMERCIAL REF.	WEIGHT (lb)	WIDTH (in - ft)	BALE DIAMETER		MAX CAPACITY (lb)	COMP	MC	MACHINE RANGE			
			ØP (in)	ØF (in)				MF	STAB	HC	ROTO
NEW A2413	860	59-5	-	48-79	2600	●	●	●	●	-	-

ØP: unwrapped bale
 ØF: wrapped bale

REQUIREMENTS	OPTIONS	LIMITS
* Arrangement for second hydraulic function	-	-



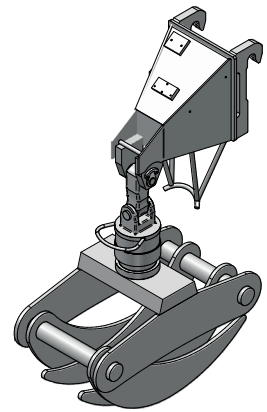
Log clamp



Clamp designed for log handling, forestry and agricultural operations

FEATURES

- Wear-resistant steel clamping element
- Continuous 360° rotation
- Optimised design for gripping logs on the ground without picking up other material
- Optimised weight for increased load capacity



COMMERCIAL REF. CODE	WIDTH (lb)	LENGHT (in - ft)	MAX CAPACITY (lb)	DIAMETER MAX (in -ft)	MACHINE RANGE					
					COMP	MC	MF	STAB	HC	ROTO
NEW A2202C	770	42-3	7700	36-3	●	-	-	-	-	-
NEW A2202	770	42-3	7700	36-3	●	-	-	-	-	-
NEW A2203	1125	45-4	11000	40-3	-	●	●	●	-	●
NEW A2204	1590	45-4	16500	56-5	-	-	-	-	●	●

REQUIREMENTS	OPTIONS	LIMITATIONS
-	-	-



Double log clamp



Clamp designed to handle trunks, forestry and agricultural work

FEATURES

- High-strength
- Independent hold booms
- Easy to use: single hydraulic command
- High manoeuvrability



COMMERCIAL REF. CODE	WEIGHT (lb)	WIDTH (in - ft)	MAX CAPACITY (lb)	DIAMETER MIN - MAX (in)	MACHINE RANGE					
					COMP	MC	MF	STAB	HC	ROTO
A2200	1300	48-4	15430	5.9-39.4	●	●	●	●	●	●
NEW A2201	2200	95-8	19850	5.9-39.4	-	-	-	-	●	-

REQUIREMENTS	OPTIONS	LIMITATIONS
-	-	-



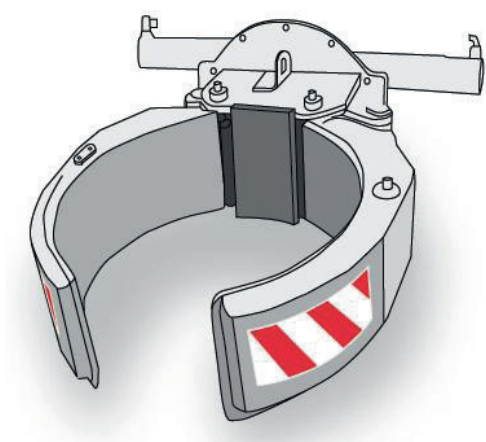
Drum clamp



Attachment for pick-up and handling of drums and similar materials

FEATURES

- Ideal for every kind of industrial sector
- 360° rotary clamp
- Handling of drums measuring 23 in to 27 in in diameter
- Easy to use



COMMERCIAL REF. CODE	WEIGHT (lb)	BARREL DIAMETER MAX-MIN (in)	MAX CAPACITY (lb)	MACHINE RANGE					
				COMP	MC	MF	STAB	HC	ROTO
NEW A2210C	606	23.6-27.6	1320	●	-	-	-	-	-
A2210	606	23.6-27.6	1320	●	●	●	●	-	●

REQUIREMENTS	OPTIONS	LIMITATIONS
Pre-arrangement for 2-function attachment	-	-



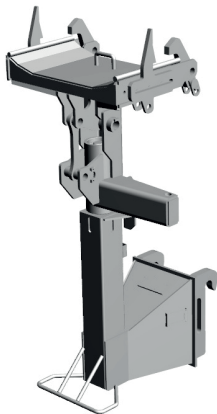
Tunnel ring holder boom



Attachment specific for handling tunnel rings

FEATURES

- Safely clenching and transport of tunnel rings
- Adjustable wedges for ring-stop
- Equipped with a locking device for the ring
- 75° degree clamp rotation to reduce frontal encumbrance



COMMERCIAL REF. CODE	WEIGHT (lb)	HEIGHT (in - ft)	WIDTH (in - ft)	COMP	MC	MACHINE RANGE			
						MF	STAB	HC	ROTO
A2414	838	67-6	36-3	-	-	-	●	-	●

REQUIREMENTS	OPTIONS	LIMITATIONS
-	-	-



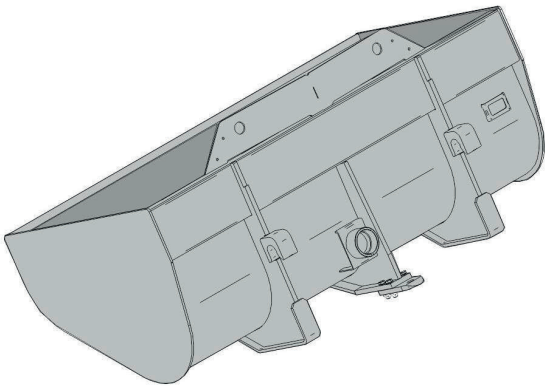
Materials Container



Ideal for handling materials

FEATURES

- Ideal for every kind of industrial sector
- Specific attachment for Roto range
- Easy material loading/unloading
- Lightweight, sturdy structure



COMMERCIAL REF. CODE	WEIGHT (lb)	MAX CAPACITY (lb)	MACHINE RANGE					
			COMP	MC	MF	STAB	HC	ROTO
A0844	900	3300	-	-	-	-	-	●
A0849	900	3300	-	-	-	-	-	●

REQUIREMENTS	OPTIONS	LIMITATIONS
-	-	-

Note



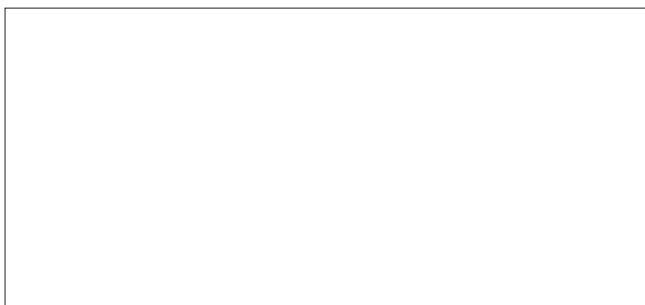
Note



The data, features and illustrations contained in this document are for indicative purposes only, and are not binding. Merlo Spa pursues a policy of continual research and development, and as such, our products may feature characteristics that differ from those described or may be subject to modification without prior notice. The products illustrated may include optional equipment.

Y497USA
1024

Your Merlo dealer



MERLO S.p.A.

Via Nazionale, 9 - 12010 S. Defendente di Cervasca (CN) Italia
Tel. +39 0171 614111 - Fax +39 0171 684101
www.merlo.com - info@merlo.com

