

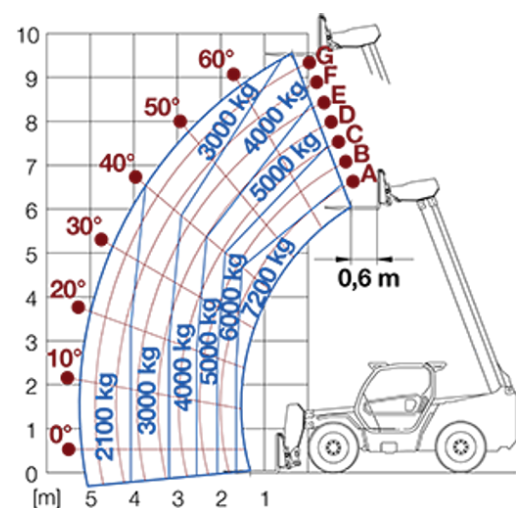
High Capacity Telehandlers

Regulatory area: **EE**
P72.10

MERLO



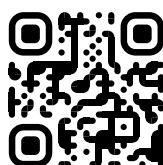
MODEL	P72.10EE
A - Length (mm)	5480
C - Wheelbase (mm)	2920
F - Ground clearance (mm)	450
H - Width (mm)	2310
M - Cab width (mm)	1010
P - Height (mm)	2500
S - Fork steering range (mm)	4990



MODEL	P72.10EE
PERFORMANCE	
Unladen weight (kg)	11150
Maximum load capacity (kg)	7200
Lift height (m)	9.55
Maximum reach (m)	5.2
Boom side-shift (mm)	+/- 250
Frame levelling (%)	+/- 8
Boom section	2
POWERTRAIN	
Engine	PERKINS 904
Range/Cylinders (l)	3.6/4
Engine power (kW/HP)	85.9/116.8
Anti-pollution technology	Tier 3
Reversible Fan	●
Maximum speed (km/h)	40
Fuel tank capacity (l)	140
AdBlue tank capacity (l)	—
Hydrostatic transmission EPD	●
Electronic joystick	●
Axles	Drop portal
Brakes	Dry discs
HYDRAULIC	
Delivery / pressure (bar-l/min)	108-250
Hydraulic oil tank capacity (l)	100
CAB	
ASCS	Full
FOPS/ROPS Cab	●
Tilting cab	—
CONFIGURATION	
Hydropneumatic Suspension CS Merlo	—
Hydropneumatic Suspension EAS Merlo	—
Permanent four-wheel drive	●
Three steering way	●
Standard tyres	400/70-24"
Hydraulically controlled stabilizers	—
Turret rotation	—
PTO (rpm)	—
3-point rear linkage (kg)	—

— NOT AVAILABLE • ● STANDARD • ○ OPTIONAL

Your Merlo dealer



MERLO S.P.A.

Via Nazionale, 9
12010 S. Defendente di Cervasca, (Cuneo) Italia
Tel. +39 0171 614111

info@merlo.com www.merlo.com

Release 4/11/2025 - 7:58

Data, specifications and illustrations contained in this document are indicative and not binding. Merlo S.p.A. pursues a policy of continuous research and development; therefore, products may differ from those described or be subject to change without prior notice. The products shown may include optional equipment.