

Stabilized telehandlers

Panoramic 30.10



**PERFORMANCE AND FEATURES****P30.10EE4****P30.10LEE4****Performance**

Unladen weight (kg)

7600

7100

Maximum load capacity (kg)

3000

3000

Lift height (m)

9.8

9.6

Maximum reach (m)

6.7

6.5

Lift height at max. load capacity (m)

9.8

9.6

Reach at max. load capacity (m)

2.5

2.3

Load capacity at max. lift height (m)

3000

3000

Load capacity at max. reach (kg)

1000

1000

Boom side-shift (mm)

-

-

Frame levelling (%)

-

-

Boom section

3

3

Powertrain

Engine

Kohler 2504 TCR

Kohler 2504 TCR

Range/Cylinders

2500/4

2500/4

Engine power (kW/HP)

55,4/75,1

55,4/75,1

Anti-pollution technology

Stage V - DOC + DPF

Tier 4 - DOC

Reversible Fan

●

●

Maximum speed (km/h)

40

33

Fuel tank capacity (l)

80

80

AdBlue tank capacity (l)

-

-

Hydrostatic transmission

YES - 2V

YES - 2V

EPD

STD

STD

Joystick autoaccelerante

STD

STD

Axles

Axial

Axial

Reducers

Epicyclic

Epicyclic

Brakes

Dry discs

Dry discs

Hydraulic

Hydraulic pump

LS+FS

LS + FS

Delivery / pressure (L / MIN - BAR)

117-210

117 - 210

Hydraulic oil tank capacity (l)

85

85

Auxiliary hydraulic service on boom

●

●

Rear service line

○

○

Cab

Cab finishing

ECO

ECO

ASCS

Light

Light

FOPS II Cab

●

●

ROPS Cab

●

●

Controls

Electronic joystick control

Electronic joystick control

Tilting cab

-

-

Reverse shuttle

Dual reverse

Dual reverse

Configuration

Hydropneumatic Suspension CS Merlo

-

-

Hydropneumatic Suspension BSS Merlo

○

○

Hydropneumatic Suspension EAS Merlo

-

-

Work lights on cab

○

○

Sun-shade in the cab

○

○

Tac-lock

●

●

Pre-arrangement for aerial work platform

○

○

Two floating forks

●

●

Pedal Inching-Control

●

●

Permanent four-wheel drive

●

●

All wheel steering

●

●

Three steering way

●

●

Standard tyres

OPT tyres

Hydraulically controlled stabilizers

Turret rotation

-

-

Tractor type approval

-

Pneumatic brakes (ton)

-

Hydraulic brakes (ton)

-

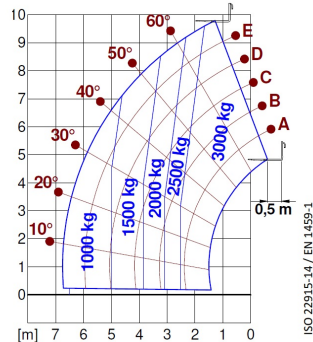
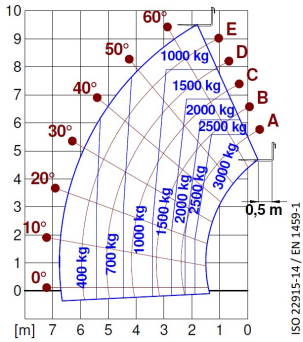
PTO

3-point rear linkage



— not available
● standard
○ optional

Diagramma di carico

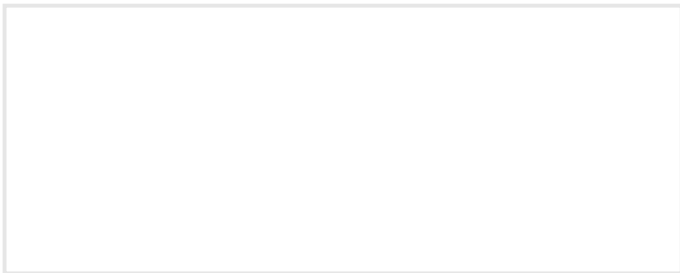


Dimensions



	P30.10EE4	P30.10LEE4	
A - Length	4700	1250	
C - Wheelbase	2740	3920	
F - Ground clearance	290	340 (300)	
H - Width	2100	2100	
M - Cabin width	1010	1010	
P - Height	2120	2020	
R - Turning radius at wheels	3930	4740	
S - Turning radius at forks	5050	5280	

Your Merlo dealer



MERLO S.P.A.

Via Nazionale, 9

12010 S. Defendente di Cervasca, (Cuneo) Italia

Tel. +39 0171 614111

Fax +39 0171 684101

info@merlo.com

www.merlo.com



