

High capacity telehandlers

Panoramic 50.18HM





PERFORMANCE AND FEATURES

P50.18HM

Performance

Unladen weight (lb)	34613
Maximum load capacity (lb)	11000
Lift height (ft)	57' 5"
Maximum reach (ft)	44' 0"
Lift height at max. load capacity (ft)	40' 0"
Reach at max. load capacity (ft)	11' 1"
Load capacity at max. lift height (lb)	5000
Load capacity at max. reach (lb)	1100
Boom side-shift (inch)	+/- 17,3
Frame levelling (%)	+/-8
Boom section	4



Powertrain

Engine	FPT NEF45
Range/Cylinders	4500/4
Engine power (kW/HP)	125/170
Anti-pollution technology	Tier 4
Reversible Fan	NO
Maximum speed (mph)	25
Fuel tank capacity (gal)	40
AdBlue tank capacity (gal)	11.4
Hydrostatic transmission	CVTronic
EPD	Plus
Joystick autoaccelerante	STD
Axles	Assiali
Reducers	Epicicloidali
Brakes	In bagno d'olio



Hydraulic

Hydraulic pump	LS + FS
Delivery / pressure (GAL / MIN - PSI)	41,7 - 3046
Hydraulic oil tank capacity (gal)	39.3
Auxiliary hydraulic service on boom	●
Rear service line	○



Cab

Cab finishing	
ASCS	
FOPS II Cab	SI
ROPS Cab	SI
Controls	Joystick elettronico
Tilting cab	
Reverse shuttle	Dual reverse

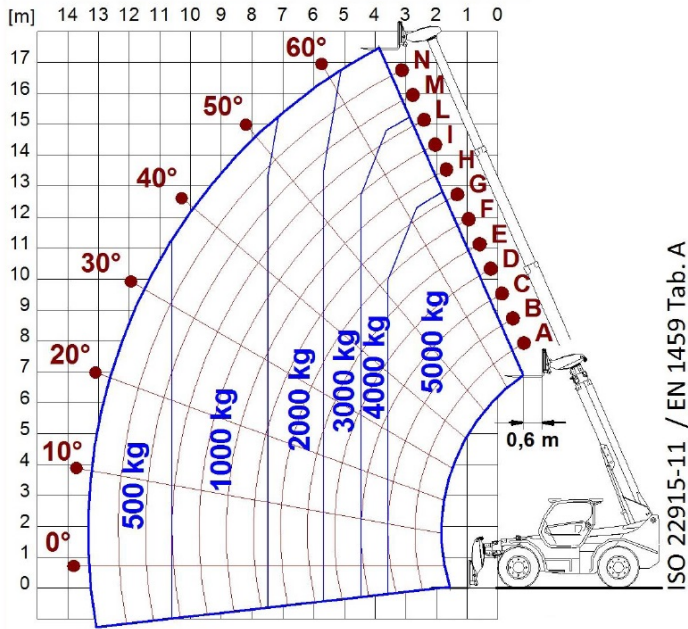


Configuration

Hydropneumatic Suspension CS Merlo	—
Hydropneumatic Suspension BSS Merlo	—
Hydropneumatic Suspension EAS Merlo	—
Work lights on cab	●
Sun-shade in the cab	●
Tac-lock	●
Pre-arrangement for aerial work platform	OPT
Two floating forks	SI
Pedal Inching-Control	SI
Permanent four-wheel drive	SI
All wheel steering	●
Three steering way	●
Standard tyres	
OPT tyres	
Hydraulically controlled stabilizers	
Turret rotation	
Tractor type approval	—
Pneumatic brakes (ton)	—
Hydraulic brakes (ton)	—
PTO	
3-point rear linkage	

- not available
- standard
- optional

Diagramma di carico



Dimensions



	P50.18HM		
A - Length	243		
C - Wheelbase	128		
F - Ground clearance	18		
H - Width	99		
M - Cabin width	40		
P - Height	112		
R - Turning radius at wheels	169		
S - Turning radius at forks	216		

Your Merlo dealer

MERLO S.P.A.

Via Nazionale, 9

12010 S. Defendente di Cervasca, (Cuneo) Italia

Tel. +39 0171 614111

Fax +39 0171 684101

info@merlo.com

www.merlo.com



