

# Stabilized telehandlers

Panoramic 40.13



**PERFORMANCE AND FEATURES****P40.13EE****Performance**

Unladen weight (kg)	9300
Maximum load capacity (kg)	4000
Lift height (m)	12.5
Maximum reach (m)	8.74
Lift height at max. load capacity (m)	10.9
Reach at max. load capacity (m)	3.3
Load capacity at max. lift height (m)	3500
Load capacity at max. reach (kg)	1000
Boom side-shift (mm)	+/- 340
Frame levelling (%)	+/- 8
Boom section	3

**Powertrain**

Engine	Kohler KDI 2504
Range/Cylinders	2500/4
Engine power (kW/HP)	55,4/75,1
Anti-pollution technology	Stage V - DOC + DPF
Reversible Fan	●
Maximum speed (km/h)	33
Fuel tank capacity (l)	140
AdBlue tank capacity (l)	-
Hydrostatic transmission	YES - 2V
EPD	STD
Joystick autoaccelerante	STD
Axles	Drop portal
Reducers	RR 700
Brakes	Dry discs

**Hydraulic**

Hydraulic pump	LS
Delivery / pressure (L / MIN - BAR)	104 - 250
Hydraulic oil tank capacity (l)	100
Auxiliary hydraulic service on boom	●
Rear service line	○

**Cab**

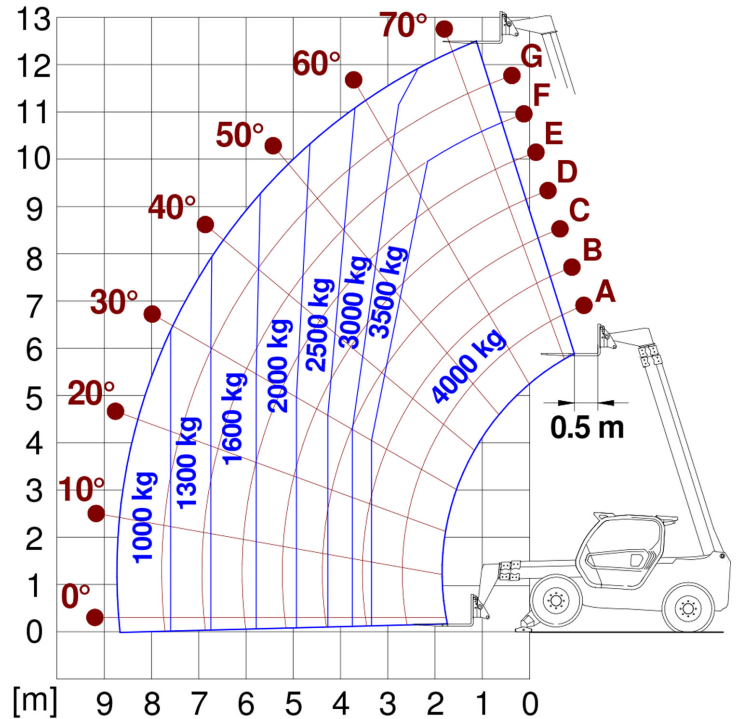
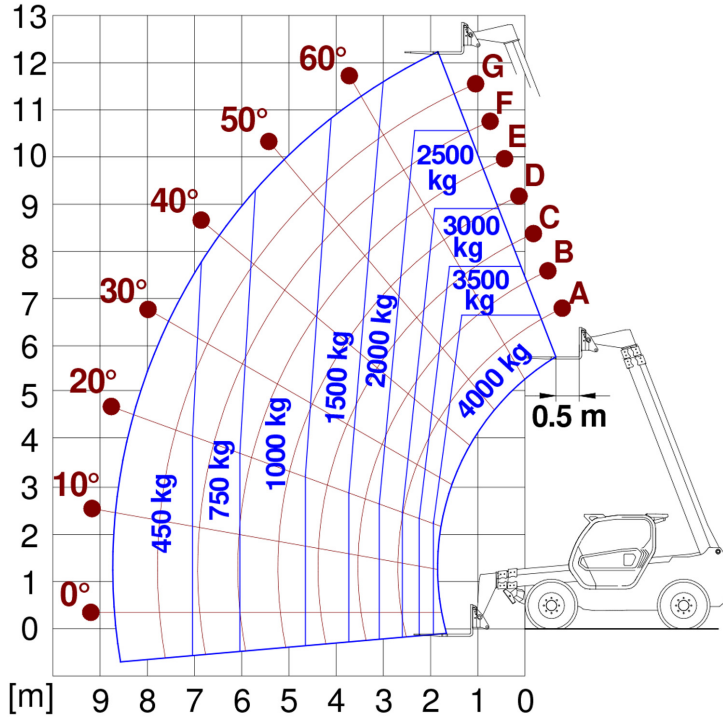
Cab finishing	ECO
ASCS	Light
FOPS II Cab	●
ROPS Cab	●
Controls	Electronic joystick control
Tilting cab	—
Reverse shuttle	Dual reverse

**Configuration**

Hydropneumatic Suspension CS Merlo	—
Hydropneumatic Suspension BSS Merlo	○
Hydropneumatic Suspension EAS Merlo	—
Work lights on cab	○
Sun-shade in the cab	○
Tac-lock	●
Pre-arrangement for aerial work platform	○
Two floating forks	●
Pedal Inching-Control	●
Permanent four-wheel drive	●
All wheel steering	●
Three steering way	●
Standard tyres	—
OPT tyres	—
Hydraulically controlled stabilizers	—
Turret rotation	—
Tractor type approval	—
Pneumatic brakes (ton)	—
Hydraulic brakes (ton)	—
PTO	—
3-point rear linkage	—



— not available  
● standard  
○ optional



Dimensions



	P40.13EE		
A - Length	5410		
C - Wheelbase	2810		
F - Ground clearance	375		
H - Width	2240		
M - Cabin width	1010		
P - Height	2425		
R - Turning radius at wheels	3920		
S - Turning radius at forks	4940		

**Your Merlo dealer**

**MERLO S.P.A.**

Via Nazionale, 9  
12010 S. Defendente di Cervasca, (Cuneo) Italia  
Tel. +39 0171 614111  
Fax +39 0171 684101

[info@merlo.com](mailto:info@merlo.com)  
[www.merlo.com](http://www.merlo.com)



