

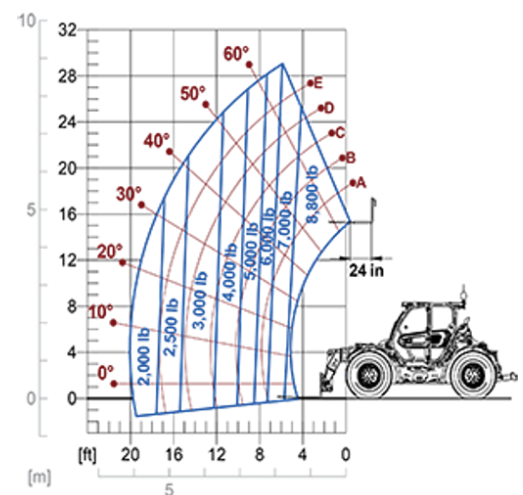
Telescopic Tractors

Regulatory area: NA

MF44.9



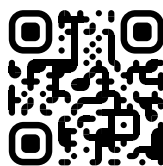
MODEL	MF44.9CS-170-CVT
A - Length (in)	219
C - Wheelbase (in)	116
F - Ground clearance (in)	17
H - Width (in)	94
M - Cab width (in)	40
P - Height (in)	102
S - Fork steering range (in)	198



MODEL	MF44.9CS-170-CVT
PERFORMANCE	
Unladen weight (lb)	21010
Maximum load capacity (lb)	8800
Lift height (ft)	29'
Maximum reach (ft)	19'
Boom side-shift (in)	—
Frame levelling (%)	+/- 8
Boom section	3
POWERTRAIN	
Engine	FPT NEF45
Range/Cylinders (l)	4.5/4
Engine power (kW/HP)	125/170
Anti-pollution technology	Stage V - SCR + DOC + DPF
Reversible Fan	○
Maximum speed (mph)	25
Fuel tank capacity (gal)	37
AdBlue tank capacity (gal)	4.8
Hydrostatic transmission EPD	CVTronic
Electronic joystick	●
Axles	Axial
Brakes	Dry discs
HYDRAULIC	
Delivery / pressure (gal/min-psi)	40 - 3045
Hydraulic oil tank capacity (gal)	26.4
CAB	
ASCS	Full
FOPS/ROPS Cab	●
Tilting cab	—
CONFIGURATION	
Hydropneumatic Suspension CS Merlo	●
Hydropneumatic Suspension EAS Merlo	—
Permanent four-wheel drive	●
Three steering way	●
Standard tyres	500/70-24"
Hydraulically controlled stabilizers	—
Turret rotation	—
PTO (rpm)	540/1000
3-point rear linkage (lb)	CAT III - 15432 Lb

— NOT AVAILABLE • ● STANDARD • ○ OPTIONAL

Your Merlo dealer



MERLO S.P.A.

Via Nazionale, 9
12010 S. Defendente di Cervasca, (Cuneo) Italia
Tel. +39 0171 614111

info@merlo.com www.merlo.com

Release 20/11/2025 - 13:59

Data, specifications and illustrations contained in this document are indicative and not binding. Merlo S.p.A. pursues a policy of continuous research and development; therefore, products may differ from those described or be subject to change without prior notice. The products shown may include optional equipment.