

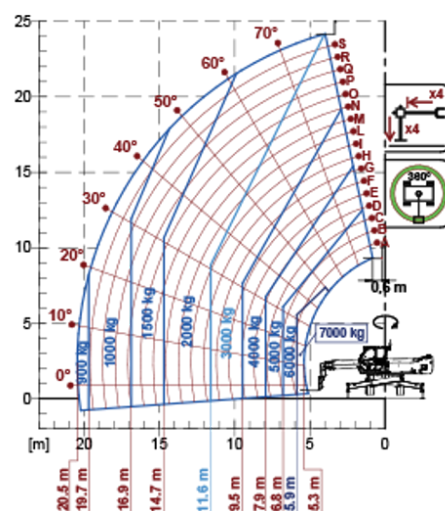
# Rotating Telehandlers

Regulatory area: AU

## ROT070.24



MODEL	ROT070.24SPLUS
A - Length (mm)	7545
C - Wheelbase (mm)	3200
F - Ground clearance (mm)	290
H - Width (mm)	2490
M - Cab width (mm)	1010
P - Height (mm)	3160
S - Fork steering range (mm)	6770



MODEL	ROT070.24SPLUS
<b>PERFORMANCE</b>	
Unladen weight (kg)	20200
Maximum load capacity (kg)	7000
Lift height (m)	20.5
Maximum reach (m)	20.5
Boom side-shift (mm)	—
Frame levelling (%)	+/-12, +/-4
Boom section	4
<b>POWERTRAIN</b>	
Engine	FPT NEF45
Range/Cylinders (l)	4.5/4
Engine power (kW/HP)	125/170
Anti-pollution technology	Stage V - SCR + DOC + DPF
Reversible Fan	—
Maximum speed (km/h)	40
Fuel tank capacity (l)	150
AdBlue tank capacity (l)	43
Hydrostatic transmission EPD	●
Electronic joystick	●
Axles	Axial
Brakes	Dry discs
<b>HYDRAULIC</b>	
Delivery / pressure (bar-l/min)	138+100-250/230
Hydraulic oil tank capacity (l)	120
<b>CAB</b>	
ASCS	Full
FOPS/ROPS Cab	●
Tilting cab	●
<b>CONFIGURATION</b>	
Hydropneumatic Suspension CS Merlo	—
Hydropneumatic Suspension EAS Merlo	●
Permanent four-wheel drive	●
Three steering way	●
Standard tyres	445/65-22.5"
Hydraulically controlled stabilizers	Multiposition
Turret rotation	Continuous
PTO (rpm)	—
3-point rear linkage (kg)	—

— NOT AVAILABLE • ● STANDARD • ○ OPTIONAL

**Your Merlo dealer**



**MERLO S.p.A.**

Via Nazionale, 9  
12010 S. Defendente di Cervasca, (Cuneo) Italia  
Tel. +39 0171 614111

info@merlo.com www.merlo.com

Release 24/11/2025 - 14:25

Data, specifications and illustrations contained in this document are indicative and not binding. Merlo S.p.A. pursues a policy of continuous research and development; therefore, products may differ from those described or be subject to change without prior notice. The products shown may include optional equipment.