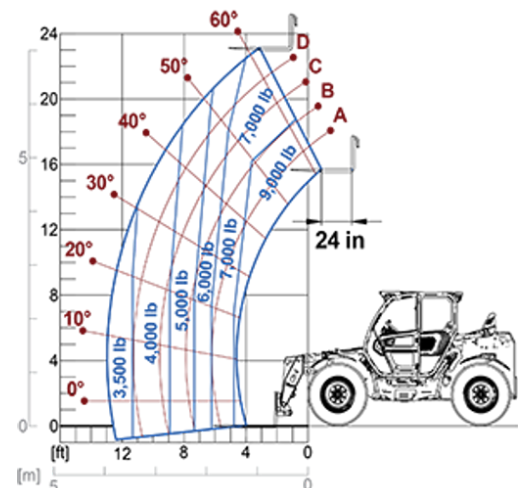


Medium Capacity Telehandlers

Regulatory area: NA
TF42.7



MODEL	TF42.7-136	TF42.7CS-136
A - Length (in)	186	186
C - Wheelbase (in)	111	111
F - Ground clearance (in)	18	18
H - Width (in)	91	91
M - Cab width (in)	40	40
P - Height (in)	100	100
S - Fork steering range (in)	189	189

MODEL	TF42.7-136	TF42.7CS-136
PERFORMANCE		
Unladen weight (lb)	17636	17636
Maximum load capacity (lb)	9000	9000
Lift height (ft)	23'	23'
Maximum reach (ft)	12'	12'
Boom side-shift (in)	—	—
Frame levelling (%)	—	—
Boom section	2	2
POWERTRAIN		
Engine	PERKINS 904	PERKINS 904
Range/Cylinders (l)	3.6/4	3.6/4
Engine power (kW/HP)	100/136	100/136
Anti-pollution technology	Stage V - SCR + DOC + DPF	Stage V - SCR + DOC + DPF
Reversible Fan	●	●
Maximum speed (mph)	40	25
Fuel tank capacity (gal)	140	140
AdBlue tank capacity (gal)	—	—
Hydrostatic transmission EPD	●	●
Electronic joystick	STD	STD
Axles	Drop portal	Drop portal
Brakes	Dry discs	Dry discs
HYDRAULIC		
Delivery / pressure (gal/min-psi)	39.6-3626	39.6-3626
Hydraulic oil tank capacity (gal)	26.4	26.4
CAB		
ASCS	Light	Light
FOPS/ROPS Cab	●	●
Tilting cab	—	—
CONFIGURATION		
Hydropneumatic Suspension CS Merlo	—	●
Hydropneumatic Suspension EAS Merlo	—	—
Permanent four-wheel drive	●	●
Three steering way	●	●
Standard tyres	400/70-24"	400/70-24"
Hydraulically controlled stabilizers	—	—
Turret rotation	—	—
PTO (rpm)	—	—
3-point rear linkage (lb)	—	—

— NOT AVAILABLE • ● STANDARD • ○ OPTIONAL

Your Merlo dealer



MERLO S.P.A.

Via Nazionale, 9
12010 S. Defendente di Cervasca, (Cuneo) Italia
Tel. +39 0171 614111

info@merlo.com www.merlo.com

Release 20/11/2025 - 16:9

Data, specifications and illustrations contained in this document are indicative and not binding. Merlo S.p.A. pursues a policy of continuous research and development; therefore, products may differ from those described or be subject to change without prior notice. The products shown may include optional equipment.