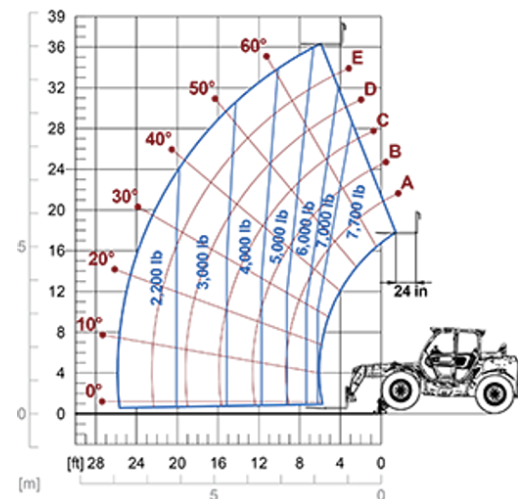


Stabilized Telehandlers

Regulatory area: NA
P35.11



MODEL	P35.11EE4
A - Length (in)	203
C - Wheelbase (in)	111
F - Ground clearance (in)	18
H - Width (in)	91
M - Cab width (in)	40
P - Height (in)	100
S - Fork steering range (in)	205



MODEL	P35.11EE4
PERFORMANCE	
Unladen weight (lb)	19841
Maximum load capacity (lb)	7700
Lift height (ft)	36'
Maximum reach (ft)	25'
Boom side-shift (in)	+/- 12.2
Frame levelling (%)	+/- 8
Boom section	3
POWERTRAIN	
Engine	REHLKO 2504
Range/Cylinders (l)	2.5/4
Engine power (kW/HP)	55.4/75.1
Anti-pollution technology	Tier 4 - DOC
Reversible Fan	●
Maximum speed (mph)	20.5
Fuel tank capacity (gal)	37
AdBlue tank capacity (gal)	—
Hydrostatic transmission EPD	●
Electronic joystick	STD
Axles	Drop portal
Brakes	Dry discs
HYDRAULIC	
Delivery / pressure (gal/min-psi)	30.9 - 3626
Hydraulic oil tank capacity (gal)	26.4
CAB	
ASCS	Light
FOPS/ROPS Cab	●
Tilting cab	—
CONFIGURATION	
Hydropneumatic Suspension CS Merlo	—
Frame suspension	—
Permanent four-wheel drive	●
Three steering way	●
Standard tyres	405/70-24"
Hydraulically controlled stabilizers	Narrow
Turret rotation	—
PTO (rpm)	—
3-point rear linkage (lb)	—

— NOT AVAILABLE • ● STANDARD • ○ OPTIONAL

Your Merlo dealer



MERLO S.p.A.

Via Nazionale, 9
12010 S. Defendente di Cervasca, (Cuneo) Italia
Tel. +39 0171 614111

info@merlo.com www.merlo.com

Release 19/02/2026 - 8:23

Data, specifications and illustrations contained in this document are indicative and not binding. Merlo S.p.A. pursues a policy of continuous research and development; therefore, products may differ from those described or be subject to change without prior notice. The products shown may include optional equipment.