

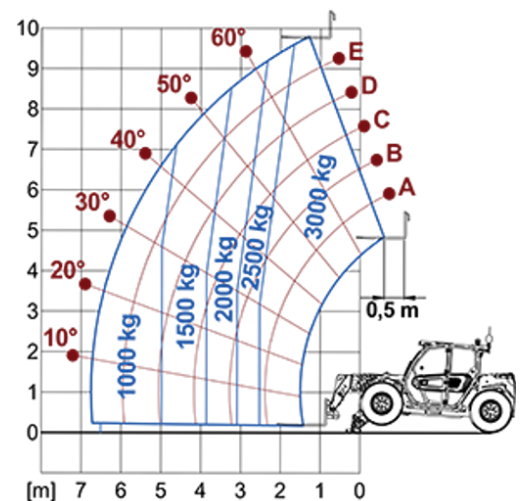
# Stabilized Telehandlers

Regulatory area: EE  
P30.10

**MERLO**



MODEL	P30.10EE4
A - Length (mm)	4700
C - Wheelbase (mm)	2740
F - Ground clearance (mm)	290
H - Width (mm)	2100
M - Cab width (mm)	1010
P - Height (mm)	2120
S - Fork steering range (mm)	5050



MODEL	P30.10EE4
<b>PERFORMANCE</b>	
Unladen weight (kg)	7600
Maximum load capacity (kg)	3000
Lift height (m)	9.8
Maximum reach (m)	6.7
Boom side-shift (mm)	—
Frame levelling (%)	—
Boom section	3
<b>POWERTRAIN</b>	
Engine	KOHLER 2504
Range/Cylinders (l)	2.5/4
Engine power (kW/HP)	55.4/75.1
Anti-pollution technology	Stage V - DOC + DPF
Reversible Fan	●
Maximum speed (km/h)	40
Fuel tank capacity (l)	80
AdBlue tank capacity (l)	—
Hydrostatic transmission EPD	●
Electronic joystick	●
Axles	Axial
Brakes	Dry discs
<b>HYDRAULIC</b>	
Delivery / pressure (bar-l/min)	117-210
Hydraulic oil tank capacity (l)	85
<b>CAB</b>	
ASCS	Light
FOPS/ROPS Cab	●
Tilting cab	—
<b>CONFIGURATION</b>	
Hydropneumatic Suspension CS Merlo	—
Hydropneumatic Suspension EAS Merlo	—
Permanent four-wheel drive	●
Three steering way	●
Standard tyres	400/70-20"
Hydraulically controlled stabilizers	—
Turret rotation	—
PTO (rpm)	—
3-point rear linkage (kg)	—

— NOT AVAILABLE • ● STANDARD • ○ OPTIONAL

**Your Merlo dealer**



**MERLO S.p.A.**

Via Nazionale, 9  
12010 S. Defendente di Cervasca, (Cuneo) Italia  
Tel. +39 0171 614111

[info@merlo.com](mailto:info@merlo.com) [www.merlo.com](http://www.merlo.com)

Release 4/11/2025 - 8:3

Data, specifications and illustrations contained in this document are indicative and not binding. Merlo S.p.A. pursues a policy of continuous research and development; therefore, products may differ from those described or be subject to change without prior notice. The products shown may include optional equipment.