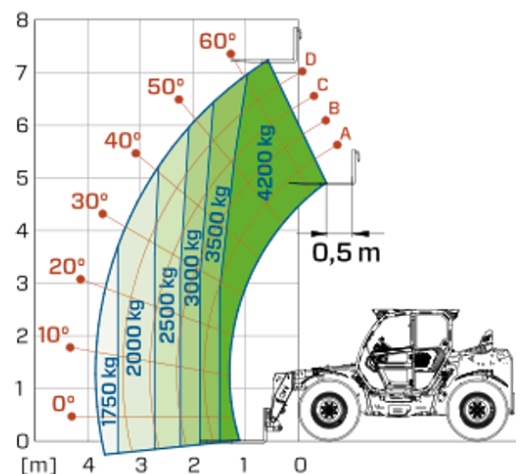


# Medium Capacity Telehandlers

Regulatory area: EU  
TF42.7TT

**MERLO**



MODEL	TF42.7TT-136	TF42.7TTCS-136	TF42.7TTCS-145-CVT
A - Length (mm)	4730	4730	4730
C - Wheelbase (mm)	2810	2810	2810
F - Ground clearance (mm)	460	460	460
H - Width (mm)	2310	2310	2310
M - Cab width (mm)	1010	1010	1010
P - Height (mm)	2530	2530	2530
S - Fork steering range (mm)	4800	4800	4800

MODEL	TF42.7TT-136	TF42.7TTCS-136	TF42.7TTCS-145-CVT
<b>PERFORMANCE</b>			
Unladen weight (kg)	8000	8200	8200
Maximum load capacity (kg)	4200	4200	4200
Lift height (m)	7.2	7.2	7.2
Maximum reach (m)	3.8	3.8	3.8
Boom side-shift (mm)	+/- 150	+/- 150	+/- 150
Frame levelling (%)	+/- 8	+/- 8	+/- 8
Boom section	2	2	2
<b>POWERTRAIN</b>			
Engine	PERKINS 904	PERKINS 904	DEUTZ TCD3.6
Range/Cylinders (l)	3.6/4	3.6/4	3.6/4
Engine power (kW/HP)	100/136	100/136	105/143
Anti-pollution technology	Stage V - SCR + DOC + DPF	Stage V - SCR + DOC + DPF	Stage V - SCR + DOC + DPF
Reversible Fan	●	●	●
Maximum speed (km/h)	40	40	40
Fuel tank capacity (l)	140	140	140
AdBlue tank capacity (l)	16	16	18
Hydrostatic transmission EPD	●	●	CVTronic
Electronic joystick	●	●	●
Axles	Drop portal	Drop portal	Drop portal
Brakes	Dry discs	Dry discs	Dry discs
<b>HYDRAULIC</b>			
Delivery / pressure (bar-l/min)	139-250	139-250	150-250
Hydraulic oil tank capacity (l)	100	100	100
<b>CAB</b>			
ASCS	Light	Light	Light
FOPS/ROPS Cab	●	●	●
Tilting cab	—	—	—
<b>CONFIGURATION</b>			
Hydropneumatic Suspension CS Merlo	—	●	●
Frame suspension	—	—	—
Permanent four-wheel drive	●	●	●
Three steering way	●	●	●
Standard tyres	400/70-24"	400/70-24"	400/70-24"
Hydraulically controlled stabilizers	—	—	—
Turret rotation	—	—	—
PTO (rpm)	—	—	—
3-point rear linkage (kg)	—	—	—

— NOT AVAILABLE • ● STANDARD • ○ OPTIONAL

Your Merlo dealer



**MERLO S.P.A.**

Via Nazionale, 9  
12010 S. Defendente di Cervasca, (Cuneo) Italia  
Tel. +39 0171 614111

info@merlo.com www.merlo.com

Release 18/06/2026 - 6:57

Data, specifications and illustrations contained in this document are indicative and not binding. Merlo S.p.A. pursues a policy of continuous research and development; therefore, products may differ from those described or be subject to change without prior notice. The products shown may include optional equipment.