

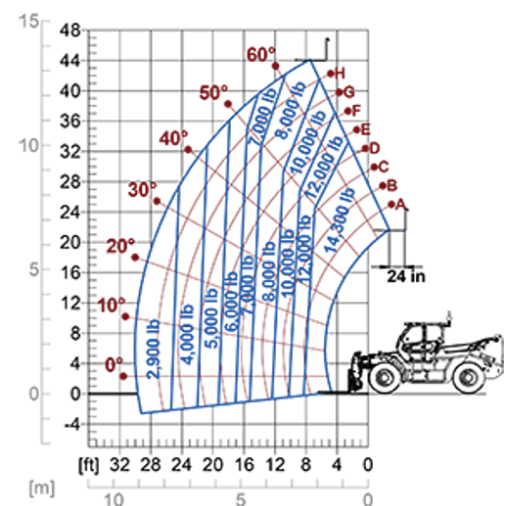
High Capacity Telehandlers

Regulatory area: NA
P65.14HM

MERLO



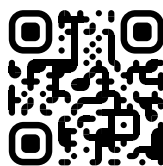
MODEL	P65.14HM
A - Length (in)	233
C - Wheelbase (in)	128
F - Ground clearance (in)	18
H - Width (in)	99
M - Cab width (in)	40
P - Height (in)	112
S - Fork steering range (in)	213



MODEL	P65.14HM
PERFORMANCE	
Unladen weight (lb)	33621
Maximum load capacity (lb)	14300
Lift height (ft)	44'
Maximum reach (ft)	30'
Boom side-shift (in)	+/- 14.8
Frame levelling (%)	+/- 8
Boom section	3
POWERTRAIN	
Engine	FPT NEF45
Range/Cylinders (l)	4.5/4
Engine power (kW/HP)	125/170
Anti-pollution technology	Stage V - SCR + DOC + DPF
Reversible Fan	—
Maximum speed (mph)	25
Fuel tank capacity (gal)	40
AdBlue tank capacity (gal)	11.4
Hydrostatic transmission EPD	CVTronic
Electronic joystick	STD
Axles	Axial
Brakes	Wet discs
HYDRAULIC	
Delivery / pressure (gal/min-psi)	41.7 - 3046
Hydraulic oil tank capacity (gal)	39.3
CAB	
ASCS	Full
FOPS/ROPS Cab	●
Tilting cab	—
CONFIGURATION	
Hydropneumatic Suspension CS Merlo	—
Hydropneumatic Suspension EAS Merlo	—
Permanent four-wheel drive	●
Three steering way	●
Standard tyres	17.5-25"
Hydraulically controlled stabilizers	—
Turret rotation	—
PTO (rpm)	—
3-point rear linkage (lb)	—

— NOT AVAILABLE • ● STANDARD • ○ OPTIONAL

Your Merlo dealer



MERLO S.p.A.

Via Nazionale, 9
12010 S. Defendente di Cervasca, (Cuneo) Italia
Tel. +39 0171 614111

info@merlo.com www.merlo.com

Release 21/11/2025 - 8:22

Data, specifications and illustrations contained in this document are indicative and not binding. Merlo S.p.A. pursues a policy of continuous research and development; therefore, products may differ from those described or be subject to change without prior notice. The products shown may include optional equipment.