

Stabilized telehandlers

Panoramic 50.18



**PERFORMANCE AND FEATURES****P50.18EE****Performance**

Unladen weight (kg)	13300
Maximum load capacity (kg)	5000
Lift height (m)	17.5
Maximum reach (m)	13.5
Lift height at max. load capacity (m)	9.2
Reach at max. load capacity (m)	3.7
Load capacity at max. lift height (m)	2500
Load capacity at max. reach (kg)	750
Boom side-shift (mm)	+/- 445
Frame levelling (%)	+/- 8
Boom section	4

**Powertrain**

Engine	Perkins 904J
Range/Cylinders	3600/4
Engine power (kW/HP)	85,9/115
Anti-pollution technology	Stage V - SCR + DPF + DOC
Reversible Fan	●
Maximum speed (km/h)	40
Fuel tank capacity (l)	140
AdBlue tank capacity (l)	18
Hydrostatic transmission	YES - 2V
EPD	STD
Joystick autoaccelerante	STD
Axles	Drop portal
Reducers	RR 700
Brakes	Dry discs

**Hydraulic**

Hydraulic pump	LS
Delivery / pressure (L / MIN - BAR)	104 - 250
Hydraulic oil tank capacity (l)	110
Auxiliary hydraulic service on boom	●
Rear service line	○

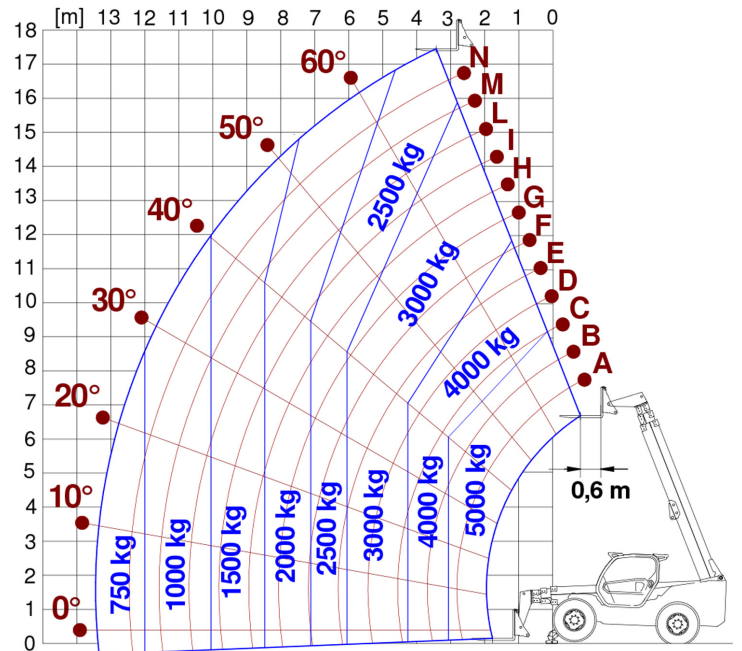
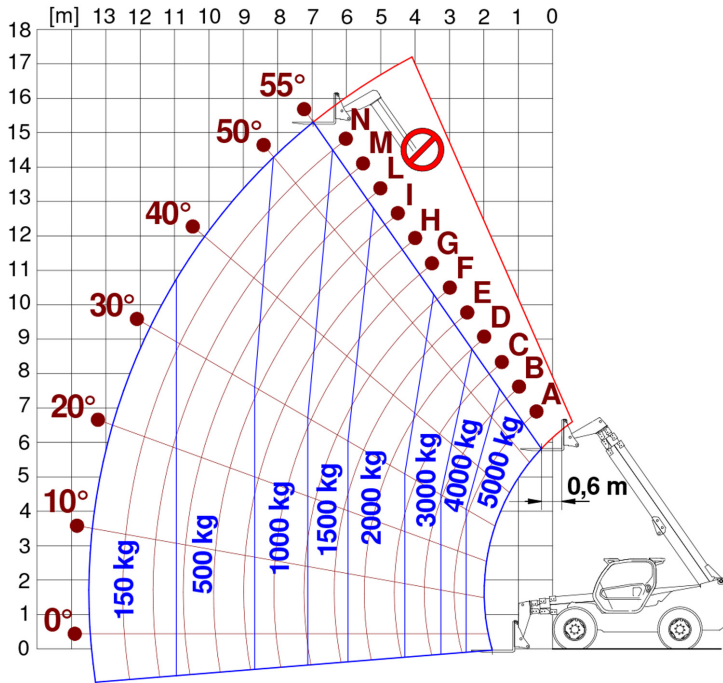
**Cab**

Cab finishing	ECO
ASCS	Full
FOPS II Cab	●
ROPS Cab	●
Controls	Electronic joystick control
Tilting cab	—
Reverse shuttle	Dual reverse

**Configuration**

Hydropneumatic Suspension CS Merlo	—
Hydropneumatic Suspension BSS Merlo	○
Hydropneumatic Suspension EAS Merlo	—
Work lights on cab	○
Sun-shade in the cab	○
Tac-lock	●
Pre-arrangement for aerial work platform	○
Two floating forks	●
Pedal Inching-Control	●
Permanent four-wheel drive	●
All wheel steering	●
Three steering way	●
Standard tyres	—
OPT tyres	—
Hydraulically controlled stabilizers	—
Turret rotation	—
Tractor type approval	—
Pneumatic brakes (ton)	—
Hydraulic brakes (ton)	—
PTO	—
3-point rear linkage	—

- not available
- standard
- optional



Dimensions



	P50.18EE		
A - Length	6190		
C - Wheelbase	3060		
F - Ground clearance	485		
H - Width	2480		
M - Cabin width	1010		
P - Height	2535		
R - Turning radius at wheels	4265		
S - Turning radius at forks	5611		

Your Merlo dealer

MERLO S.P.A.

Via Nazionale, 9

12010 S. Defendente di Cervasca, (Cuneo) Italia

Tel. +39 0171 614111

Fax +39 0171 684101

info@merlo.com

www.merlo.com



