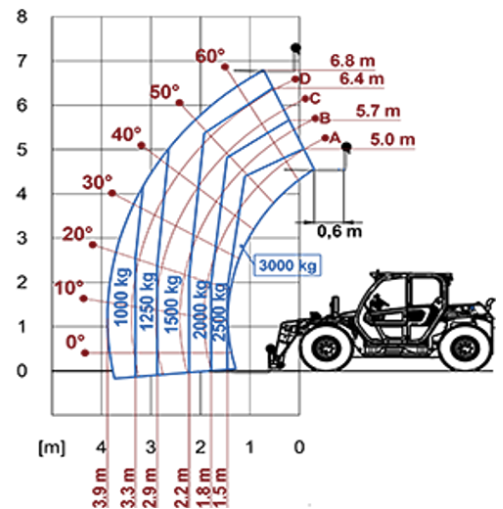


Compact Telehandlers

Regulatory area: AU
TF30.7



MODEL	TF30.7EE	TF30.7LEE
A - Length (mm)	4510	4510
C - Wheelbase (mm)	2800	2800
F - Ground clearance (mm)	300	300
H - Width (mm)	2000	2000
M - Cab width (mm)	1010	1010
P - Height (mm)	2120	2000
S - Fork steering range (mm)	3820	3820

MODEL	TF30.7EE	TF30.7LEE
PERFORMANCE		
Unladen weight (kg)	6650	6650
Maximum load capacity (kg)	3000	3000
Lift height (m)	6.8	6.8
Maximum reach (m)	3.7	3.7
Boom side-shift (mm)	—	—
Frame levelling (%)	—	—
Boom section	2	2
POWERTRAIN		
Engine	DEUTZ TCD 2.9	DEUTZ TCD 2.9
Range/Cylinders (l)	2.9/4	2.9/4
Engine power (kW/HP)	75/102	75/102
Anti-pollution technology	Tier 3	Tier 3
Reversible Fan	●	●
Maximum speed (km/h)	40	40
Fuel tank capacity (l)	90	90
AdBlue tank capacity (l)	—	—
Hydrostatic transmission EPD	●	●
Electronic joystick	●	●
Axles	Axial	Axial
Brakes	Dry discs	Dry discs
HYDRAULIC		
Delivery / pressure (bar-l/min)	100-250	100-250
Hydraulic oil tank capacity (l)	55	55
CAB		
ASCS	Light	Light
FOPS/ROPS Cab	●	●
Tilting cab	—	—
CONFIGURATION		
Hydropneumatic Suspension CS Merlo	—	—
Frame suspension	—	—
Permanent four-wheel drive	●	●
Three steering way	●	●
Standard tyres	400/70-20"	400/70-20"
Hydraulically controlled stabilizers	—	—
Turret rotation	—	—
PTO (rpm)	—	—
3-point rear linkage (kg)	—	—

— NOT AVAILABLE • ● STANDARD • ○ OPTIONAL

Your Merlo dealer



MERLO S.P.A.

Via Nazionale, 9
12010 S. Defendente di Cervasca, (Cuneo) Italia
Tel. +39 0171 614111

info@merlo.com www.merlo.com

Release 18/05/2026 - 8:8

Data, specifications and illustrations contained in this document are indicative and not binding. Merlo S.p.A. pursues a policy of continuous research and development; therefore, products may differ from those described or be subject to change without prior notice. The products shown may include optional equipment.