

Medium Capacity Telehandlers

Turbofarmer 38.10



**PERFORMANCE AND FEATURES****TF38.10-136****TF38.10CS-136****Performance**

Unladen weight (kg)

8800

8500

Maximum load capacity (kg)

3800

3800

Lift height (m)

9,7

9.5

Maximum reach (m)

6,6

6.6

Lift height at max. load capacity (m)

8,6

6.1

Reach at max. load capacity (m)

1,9

1.9

Load capacity at max. lift height (m)

3000

1700

Load capacity at max. reach (kg)

800

800

Boom side-shift (mm)

-

-

Frame levelling (%)

-

-

Boom section

3

3

Powertrain

Engine

Deutz TCD 3.6

Perkins 904J

Range/Cylinders

3600/4

3600/4

Engine power (kW/HP)

105/143

100/136

Anti-pollution technology

Stage V - SCR + DPF +

Stage V - SCR + DPF +

Reversible Fan

●

●

Maximum speed (km/h)

40

40

Fuel tank capacity (l)

140

140

AdBlue tank capacity (l)

18

18

Hydrostatic transmission

YES - 2V

YES - 2V

EPD

PLUS

PLUS

Joystick autoaccelerante

STD

STD

Axles

Drop portal

Drop portal

Reducers

RR 700

RR 700

Brakes

Dry discs

Dry discs

Hydraulic

Hydraulic pump

LS+FS

LS+FS

Delivery / pressure (L / MIN - BAR)

145-250

139-250

Hydraulic oil tank capacity (l)

100

100

Auxiliary hydraulic service on boom

●

Rear service line

○

○

Cab

Cab finishing

ECO

ECO

ASCS

Light

Light

FOPS II Cab

●

●

ROPS Cab

●

●

Controls

Electronic joystick control

Electronic joystick control

Tilting cab

-

-

Reverse shuttle

Dual reverse

Dual reverse

Configuration

Hydropneumatic Suspension CS Merlo

●

●

Hydropneumatic Suspension BSS Merlo

○

○

Hydropneumatic Suspension EAS Merlo

-

-

Work lights on cab

●

●

Sun-shade in the cab

○

○

Tac-lock

●

●

Pre-arrangement for aerial work platform

○

○

Two floating forks

●

●

Pedal Inching-Control

●

●

Permanent four-wheel drive

●

●

All wheel steering

●

●

Three steering way

●

●

Standard tyres

OPT tyres

Hydraulically controlled stabilizers

-

-

Turret rotation

-

-

Tractor type approval

○

○

Pneumatic brakes (ton)

○

○

Hydraulic brakes (ton)

○

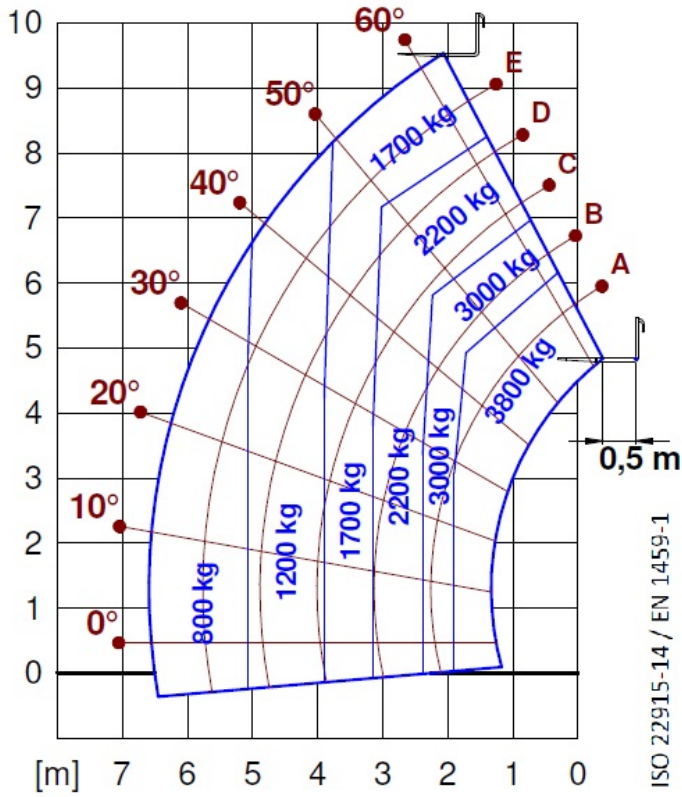
○

PTO

3-point rear linkage



- not available
● standard
○ optional



Dimensions



	TF38.10-136	TF38.10CS-136	
A - Length	4760	1245	
C - Wheelbase	2810	4104	
F - Ground clearance	460	460	
H - Width	2310	2310	
M - Cabin width	1010	1010	
P - Height	2530	2530	
R - Turning radius at wheels	3985	3985	
S - Turning radius at forks	4800	4800	

Your Merlo dealer

MERLO S.P.A.

Via Nazionale, 9

12010 S. Defendente di Cervasca, (Cuneo) Italia

Tel. +39 0171 614111

Fax +39 0171 684101

info@merlo.com

www.merlo.com



