

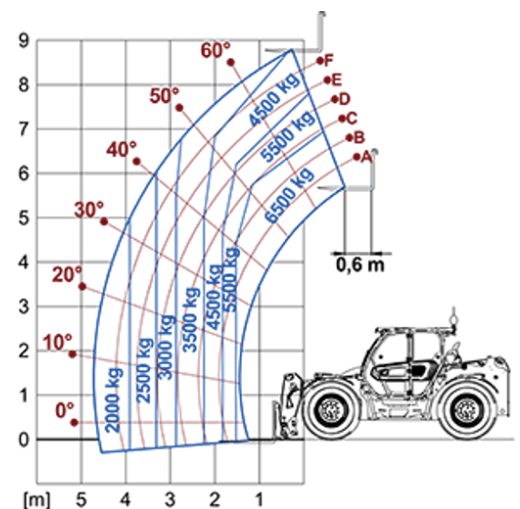
High Capacity Telehandlers

Regulatory area: EE
TF65.9

MERLO



MODEL	TF65.9TCS-170EE-HF
A - Length (mm)	5260
C - Wheelbase (mm)	3050
F - Ground clearance (mm)	440
H - Width (mm)	2400
M - Cab width (mm)	1010
P - Height (mm)	2510
S - Fork steering range (mm)	5325



MODEL	TF65.9TCS-170EE-HF
PERFORMANCE	
Unladen weight (kg)	11100
Maximum load capacity (kg)	6500
Lift height (m)	8.8
Maximum reach (m)	4.7
Boom side-shift (mm)	—
Frame levelling (%)	+/-8
Boom section	2
POWERTRAIN	
Engine	FPT NEF45
Range/Cylinders (l)	4.5/4
Engine power (kW/HP)	125/170
Anti-pollution technology	Tier 2
Reversible Fan	○
Maximum speed (km/h)	40
Fuel tank capacity (l)	140
AdBlue tank capacity (l)	—
Hydrostatic transmission EPD	●
Electronic joystick	●
Axles	Axial
Brakes	Dry discs
HYDRAULIC	
Delivery / pressure (bar-l/min)	160-250
Hydraulic oil tank capacity (l)	100
CAB	
ASCS	Full
FOPS/ROPS Cab	●
Tilting cab	—
CONFIGURATION	
Hydropneumatic Suspension CS Merlo	●
Hydropneumatic Suspension EAS Merlo	—
Permanent four-wheel drive	●
Three steering way	●
Standard tyres	500/70-24"
Hydraulically controlled stabilizers	—
Turret rotation	—
PTO (rpm)	—
3-point rear linkage (kg)	—

— NOT AVAILABLE • ● STANDARD • ○ OPTIONAL

Your Merlo dealer



MERLO S.p.A.

Via Nazionale, 9
12010 S. Defendente di Cervasca, (Cuneo) Italia
Tel. +39 0171 614111

info@merlo.com www.merlo.com

Release 4/11/2025 - 7:56

Data, specifications and illustrations contained in this document are indicative and not binding. Merlo S.p.A. pursues a policy of continuous research and development; therefore, products may differ from those described or be subject to change without prior notice. The products shown may include optional equipment.