

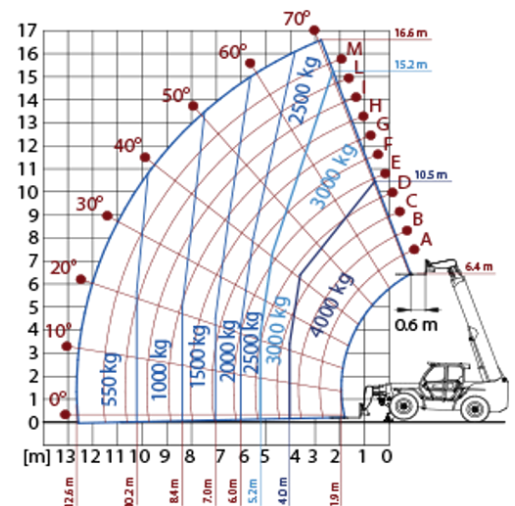
Stabilized Telehandlers

Regulatory area: AU
P40.17

MERLO



MODEL	P40.17EE
A - Length (mm)	5970
C - Wheelbase (mm)	2950
F - Ground clearance (mm)	450
H - Width (mm)	2420
M - Cab width (mm)	1010
P - Height (mm)	2500
S - Fork steering range (mm)	5160



MODEL	P40.17EE
PERFORMANCE	
Unladen weight (kg)	11670
Maximum load capacity (kg)	4000
Lift height (m)	16.6
Maximum reach (m)	12.4
Boom side-shift (mm)	+/- 435
Frame levelling (%)	+/- 8
Boom section	3
POWERTRAIN	
Engine	PERKINS 904
Range/Cylinders (l)	2.5/4
Engine power (kW/HP)	55.4/75.1
Anti-pollution technology	Tier 3
Reversible Fan	●
Maximum speed (km/h)	33
Fuel tank capacity (l)	140
AdBlue tank capacity (l)	—
Hydrostatic transmission EPD	●
Electronic joystick	●
Axles	Drop portal
Brakes	Dry discs
HYDRAULIC	
Delivery / pressure (bar-l/min)	108-250
Hydraulic oil tank capacity (l)	100
CAB	
ASCS	Light
FOPS/ROPS Cab	●
Tilting cab	—
CONFIGURATION	
Hydropneumatic Suspension CS Merlo	—
Hydropneumatic Suspension EAS Merlo	—
Permanent four-wheel drive	●
Three steering way	●
Standard tyres	400/70-24"
Hydraulically controlled stabilizers	Narrow
Turret rotation	—
PTO (rpm)	—
3-point rear linkage (kg)	—

— NOT AVAILABLE • ● STANDARD • ○ OPTIONAL

Your Merlo dealer



MERLO S.p.A.

Via Nazionale, 9
12010 S. Defendente di Cervasca, (Cuneo) Italia
Tel. +39 0171 614111

info@merlo.com www.merlo.com

Release 24/11/2025 - 14:23

Data, specifications and illustrations contained in this document are indicative and not binding. Merlo S.p.A. pursues a policy of continuous research and development; therefore, products may differ from those described or be subject to change without prior notice. The products shown may include optional equipment.