

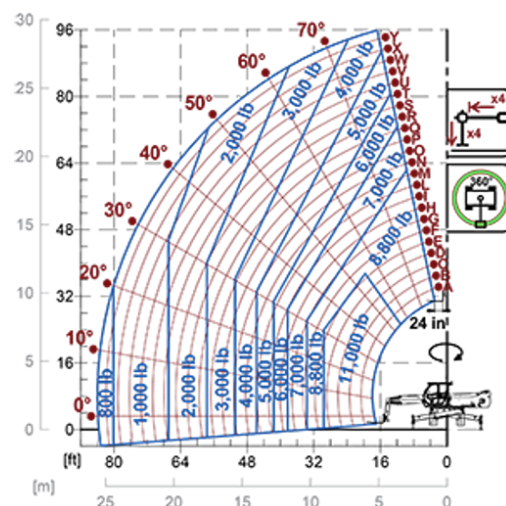
# Rotating Telehandlers

Regulatory area: NA

## ROT050.30



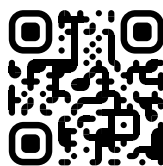
MODEL	ROT050.30SPLUSEE4
A - Length (in)	307
C - Wheelbase (in)	126
F - Ground clearance (in)	11
H - Width (in)	98
M - Cab width (in)	40
P - Height (in)	124
S - Fork steering range (in)	267



MODEL	ROTO50.30SPLUSEE4
<b>PERFORMANCE</b>	
Unladen weight (lb)	45194
Maximum load capacity (lb)	11000
Lift height (ft)	95'
Maximum reach (ft)	83'
Boom side-shift (in)	—
Frame levelling (%)	+/-12, +/-4
Boom section	5
<b>POWERTRAIN</b>	
Engine	FPT NEF45
Range/Cylinders (l)	4.5/4
Engine power (kW/HP)	125/170
Anti-pollution technology	Tier 4 - DOC
Reversible Fan	—
Maximum speed (mph)	25
Fuel tank capacity (gal)	39.6
AdBlue tank capacity (gal)	11.4
Hydrostatic transmission EPD	●
Electronic joystick	●
Axles	Axial
Brakes	Dry discs
<b>HYDRAULIC</b>	
Delivery / pressure (gal/min-psi)	36.5 + 26.4 - 3626/3336
Hydraulic oil tank capacity (gal)	31.7
<b>CAB</b>	
ASCS	Full
FOPS/ROPS Cab	●
Tilting cab	●
<b>CONFIGURATION</b>	
Hydropneumatic Suspension CS Merlo	—
Hydropneumatic Suspension EAS Merlo	●
Permanent four-wheel drive	●
Three steering way	●
Standard tyres	445/65-25"
Hydraulically controlled stabilizers	Multiposition
Turret rotation	Continuous
PTO (rpm)	—
3-point rear linkage (lb)	—

— NOT AVAILABLE • ● STANDARD • ○ OPTIONAL

**Your Merlo dealer**



**MERLO S.p.A.**

Via Nazionale, 9  
12010 S. Defendente di Cervasca, (Cuneo) Italia  
Tel. +39 0171 614111

info@merlo.com [www.merlo.com](http://www.merlo.com)

Release 20/11/2025 - 15:13

Data, specifications and illustrations contained in this document are indicative and not binding. Merlo S.p.A. pursues a policy of continuous research and development; therefore, products may differ from those described or be subject to change without prior notice. The products shown may include optional equipment.