

Compact Telehandlers

Turbofarmer 30.7



**PERFORMANCE AND FEATURES****P30.7L****P30.7****Performance**

Unladen weight (kg)

6450

6450

Maximum load capacity (kg)

3000

3000

Lift height (m)

6,7

6,7

Maximum reach (m)

3,78

3,78

Lift height at max. load capacity (m)

5,4

5,4

Reach at max. load capacity (m)

1,6

1,6

Load capacity at max. lift height (m)

2000

2000

Load capacity at max. reach (kg)

1100

1100

Boom side-shift (mm)

-

-

Frame levelling (%)

-

-

Boom section

2

2

Powertrain

Engine

KOHLER KDI2504

KOHLER KDI2504

Range/Cylinders

2500/4

2500/4

Engine power (kW/HP)

55,4/75,1

55,4/75,1

Anti-pollution technology

Stage V - DPF + DOC

Stage V - DPF + DOC

Reversible Fan

-

-

Maximum speed (km/h)

35

35

Fuel tank capacity (l)

90

90

AdBlue tank capacity (l)

-

-

Hydrostatic transmission

●

●

EPD

PLUS

PLUS

Joystick autoaccelerante

●

●

Axles

Axial

Axial

Reducers

Epicyclic

Epicyclic

Brakes

Dry discs

Dry discs

Automatic parking brake

●

●

Hydraulic

Hydraulic pump

Gear

Gear

Delivery / pressure (L / MIN - BAR)

100 - 250

100 - 250

Hydraulic oil tank capacity (l)

55

55

Auxiliary hydraulic service on boom

●

●

Rear service line

○

○

Cab

Cab finishing

Standard

Standard

ASCS

Light

Light

FOPS II Cab

●

●

ROPS Cab

●

●

Controls

Electronic joystick control

Electronic joystick control

Tilting cab

-

-

Reverse shuttle

Dual reverse

Dual reverse

Configuration

Hydropneumatic Suspension CS Merlo

-

-

Hydropneumatic Suspension BSS Merlo

○

○

Hydropneumatic Suspension EAS Merlo

-

-

Work lights on cab

●

●

Sun-shade in the cab

○

○

Tac-lock

●

●

Pre-arrangement for aerial work platform

-

-

Two floating forks

●

●

Pedal Inching-Control

●

●

Permanent four-wheel drive

●

●

All wheel steering

●

●

Three steering way

●

●

Standard tyres

400/70 - R20

400/70 - R20

OPT tyres

-

-

Hydraulically controlled stabilizers

-

-

Turret rotation

-

-

Tractor type approval

○

○

Pneumatic brakes (ton)

○

○

Hydraulic brakes (ton)

○

○

PTO

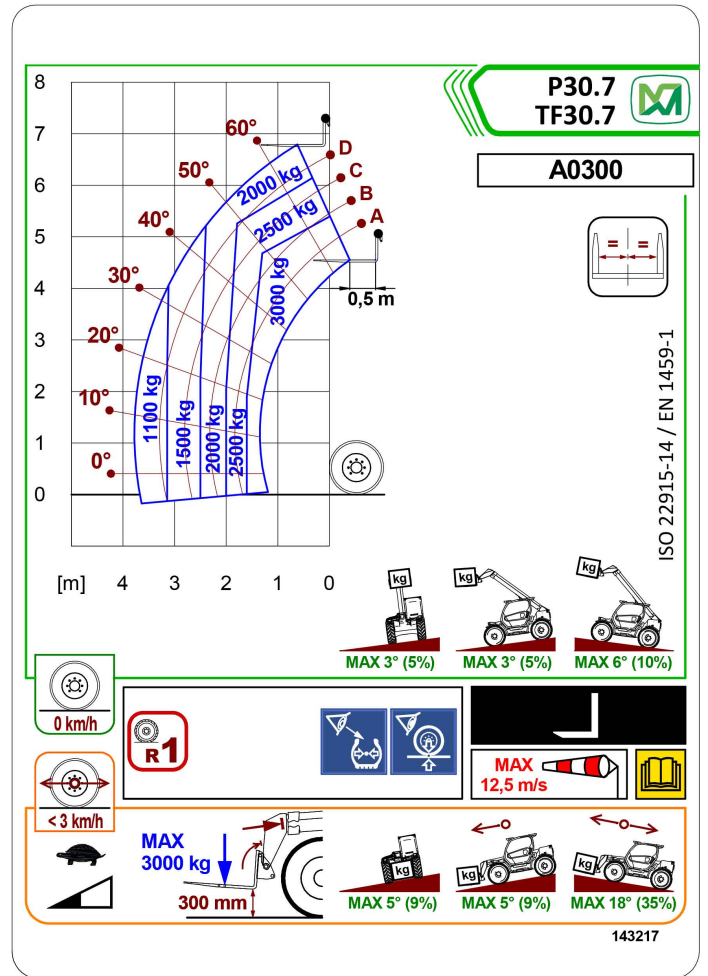
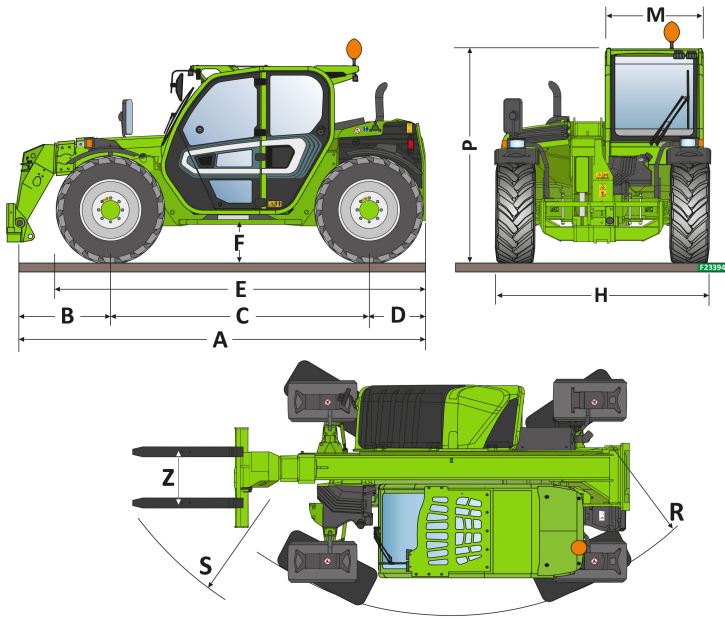
-

-



— not available
 ● standard
 ○ optional

Diagramma di carico



Dimensions



	P30.7L	P30.7	
A - Length	4510	4510	
C - Wheelbase	2800	2800	
F - Ground clearance	300	300	
H - Width	2000	2000	
M - Cabin width	1010	1010	
P - Height	2000	2120	
R - Turning radius at wheels	4240	4240	
S - Turning radius at forks	4820	4820	

Your Merlo dealer

MERLO S.P.A.

Via Nazionale, 9

12010 S. Defendente di Cervasca, (Cuneo) Italia

Tel. +39 0171 614111

Fax +39 0171 684101

info@merlo.com

www.merlo.com



