

# Medium Capacity Telehandlers

Turbofarmer 38.10



**PERFORMANCE AND FEATURES****TF38.10-116EE****Performance**

Unladen weight (kg)	8200
Maximum load capacity (kg)	4005
Lift height (m)	9,5
Maximum reach (m)	6,6
Lift height at max. load capacity (m)	6,1
Reach at max. load capacity (m)	1,9
Load capacity at max. lift height (m)	1700
Load capacity at max. reach (kg)	800
Boom side-shift (mm)	-
Frame levelling (%)	-
Boom section	3

**Powertrain**

Engine	Deutz TCD 3.6
Range/Cylinders	3600/4
Engine power (kW/HP)	85,9/116,8
Anti-pollution technology	Tier 3
Reversible Fan	●
Maximum speed (km/h)	40
Fuel tank capacity (l)	140
AdBlue tank capacity (l)	
Hydrostatic transmission	YES - 2V
EPD	PLUS
Joystick autoaccelerante	STD
Axles	Drop portal
Reducers	RR 700
Brakes	Dry discs

**Hydraulic**

Hydraulic pump	LS+FS
Delivery / pressure (L / MIN - BAR)	150-250
Hydraulic oil tank capacity (l)	100
Auxiliary hydraulic service on boom	●
Rear service line	○

**Cab**

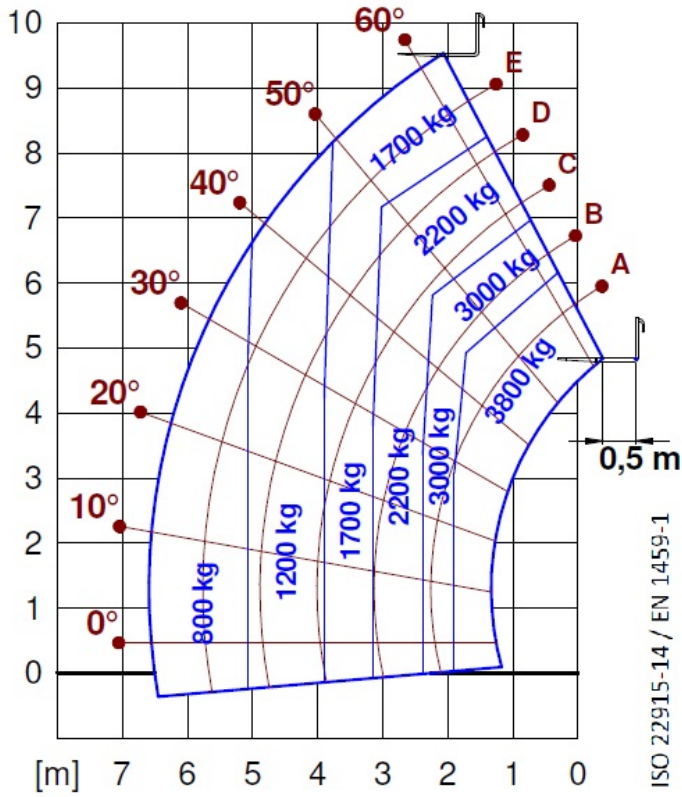
Cab finishing	ECO
ASCS	Full
FOPS II Cab	●
ROPS Cab	●
Controls	Electronic joystick control
Tilting cab	—
Reverse shuttle	Dual reverse

**Configuration**

Hydropneumatic Suspension CS Merlo	—
Hydropneumatic Suspension BSS Merlo	○
Hydropneumatic Suspension EAS Merlo	—
Work lights on cab	○
Sun-shade in the cab	○
Tac-lock	●
Pre-arrangement for aerial work platform	○
Two floating forks	●
Pedal Inching-Control	●
Permanent four-wheel drive	●
All wheel steering	●
Three steering way	●
Standard tyres	
OPT tyres	
Hydraulically controlled stabilizers	—
Turret rotation	—
Tractor type approval	—
Pneumatic brakes (ton)	○
Hydraulic brakes (ton)	○
PTO	
3-point rear linkage	



— not available  
 ● standard  
 ○ optional



Dimensions



	TF38.10-116EE		
A - Length	4760		
C - Wheelbase	2810		
F - Ground clearance	460		
H - Width	2310		
M - Cabin width	1010		
P - Height	2530		
R - Turning radius at wheels	3985		
S - Turning radius at forks	4800		

**Your Merlo dealer**

**MERLO S.P.A.**

Via Nazionale, 9

12010 S. Defendente di Cervasca, (Cuneo) Italia

Tel. +39 0171 614111

Fax +39 0171 684101

[info@merlo.com](mailto:info@merlo.com)

[www.merlo.com](http://www.merlo.com)



