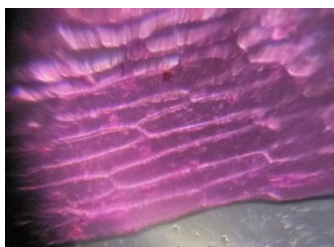
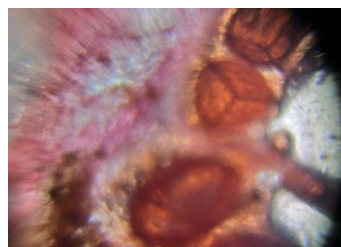


(A)



(B)



(C)



(D)

Fig 1 : Photographs (taken Through Samsung J8) of the Specimens as observed under Foldscope. (A) Stomata on Leaf of *Cranium* (B) Cell of Onion Peel (C) Spores of *Isoetes* (D) Section through root nodule of *Sesbania* observed under foldscope.



Fig 2 : Photographs Taken during Workshop.