

Districting Final Maps



Traditional Districting Principles

Preventing a Districting from Becoming a Gerrymander

There are a number of criteria that have been used nationally and upheld by courts.

- Relatively equal size – people, not citizens
- Contiguous – districts should not hop/jump
- Keep districts compact – appearance/function
- Maintain “*communities of interest*”
- Follow city/county/local government lines

Draft Map Options

- Draft Plan 1
- Draft Plan 2

REDISTRICTING PARTNERS Mid Peninsula Water District
Draft Plan 2

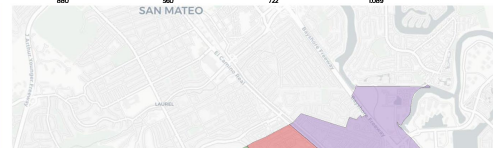
2020 Census

| | 1 | 2 | 3 | 4 | 5 |
|-------------|-------|-------|-------|-------|-------|
| Population | 5,098 | 5,804 | 6,136 | 5,820 | 5,720 |
| Deviation | -250 | -44 | 288 | 2 | -48 |
| Deviation % | -3.3% | -0.7% | 4.7% | 0.0% | -0.8% |
| Other | 3,196 | 3,291 | 4,052 | 3,299 | 3,428 |
| Other % | 27.7% | 56.7% | 66.0% | 57.0% | 46.0% |
| Latino | 491 | 880 | 960 | 722 | 1,089 |
| Latino % | | | | | |
| Asian | | | | | |
| Asian % | | | | | |
| Black | | | | | |
| Black % | | | | | |

Citizen Voting Age

| | |
|---------------|--|
| Total CVAP | |
| Other CVAP % | |
| Latino CVAP | |
| Latino CVAP % | |
| Asian CVAP | |
| Asian CVAP % | |
| Black CVAP | |
| Black CVAP % | |

Mid Peninsula Water District
Draft Plan 2



REDISTRICTING PARTNERS Mid Peninsula Water District
Draft Plan 1

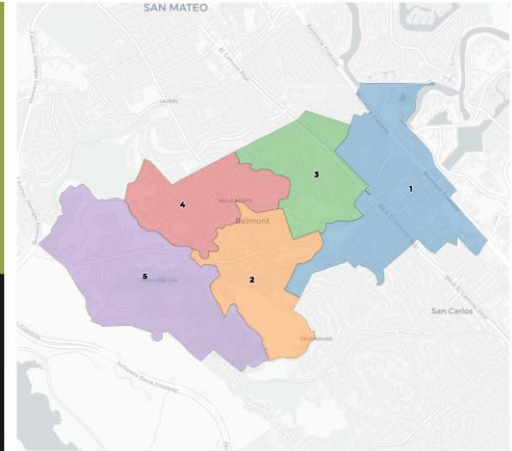
2020 Census

| | 1 | 2 | 3 | 4 | 5 |
|-------------|-------|-------|-------|-------|-------|
| Population | 4,092 | 5,701 | 5,695 | 5,664 | 5,936 |
| Deviation | 274 | 87 | -422 | -154 | 18 |
| Deviation % | 6.7% | 1.5% | -7.3% | -2.7% | 0.3% |
| Other | 3,083 | 3,348 | 3,015 | 3,608 | 3,352 |
| Other % | 50.6% | 58.7% | 52.9% | 63.7% | 56.6% |
| Latino | 1,061 | 854 | 799 | 490 | 946 |
| Latino % | 27.6% | 15.0% | 14.0% | 8.6% | 15.9% |
| Asian | 1,947 | | | | |
| Asian % | 30.3% | | | | |
| Black | 101 | | | | |
| Black % | 2.5% | | | | |

Citizen Voting Age Popul

| | |
|---------------|-------|
| Total CVAP | 3,306 |
| Other CVAP | 2,186 |
| Other CVAP % | 65.2% |
| Latino CVAP | 374 |
| Latino CVAP % | 11.3% |
| Asian CVAP | 703 |
| Asian CVAP % | 21.3% |
| Black CVAP | 73 |
| Black CVAP % | 2.2% |

Mid Peninsula Water District
Draft Plan 1

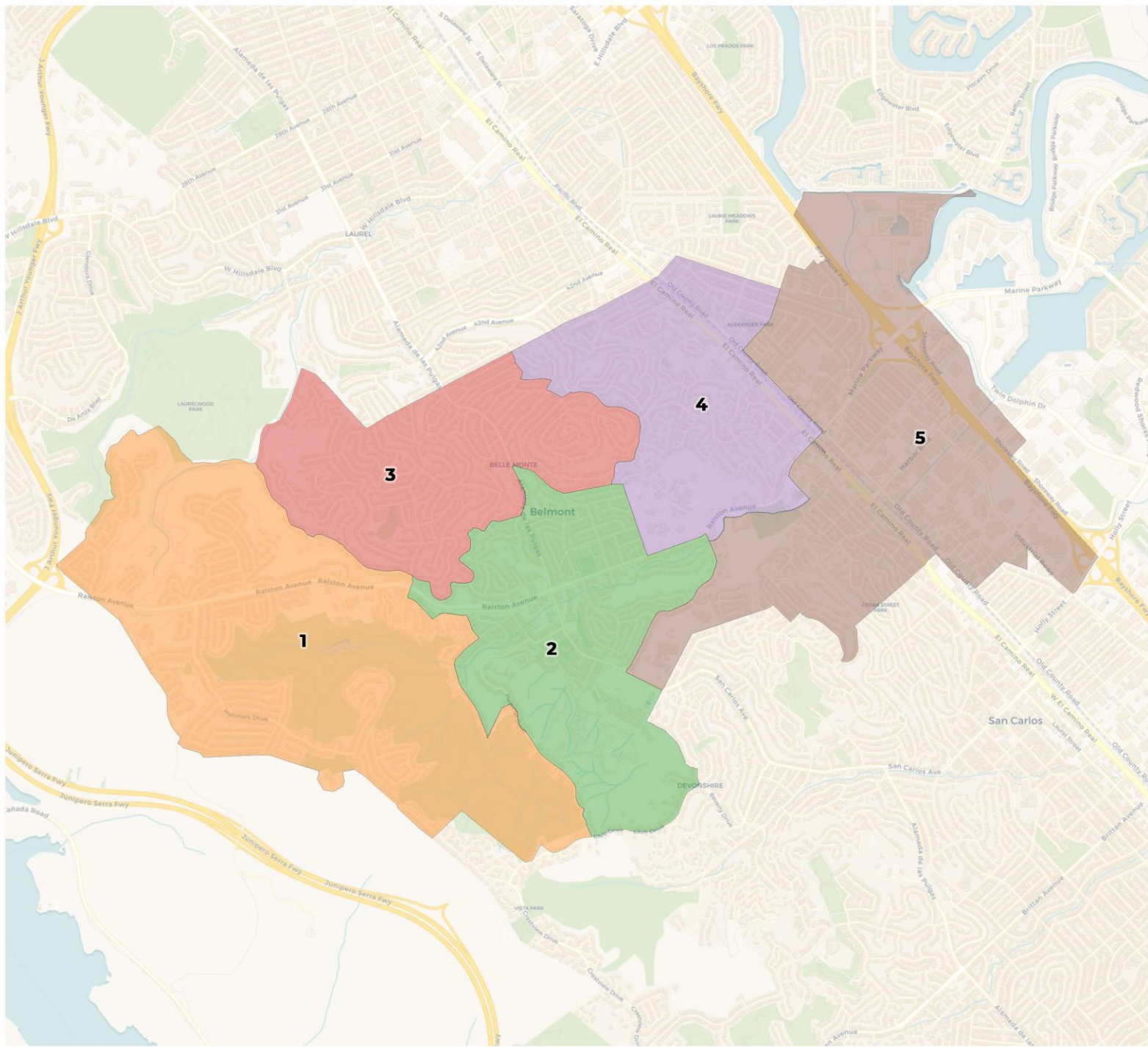


REDISTRICTING PARTNERS



**REDISTRICTING
PARTNERS**

**Mid-Peninsula Water
District
Draft Plan 1**



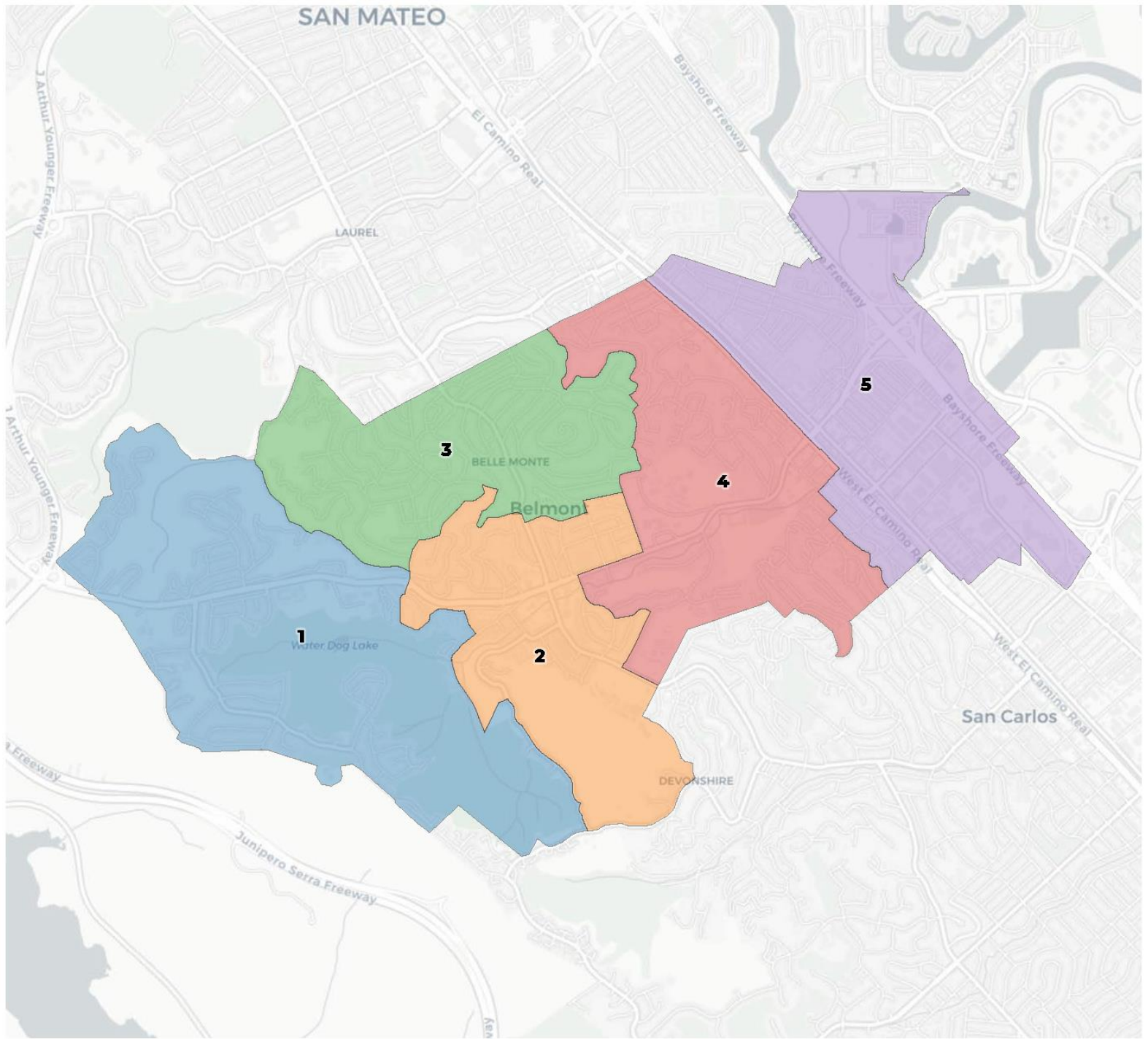
2020 Census

| | 1 | 2 | 3 | 4 | 5 |
|-------------|-------|-------|-------|-------|-------|
| Population | 6,092 | 5,701 | 5,695 | 5,664 | 5,936 |
| Deviation | 274 | -117 | -123 | -154 | 118 |
| Deviation % | 4.7% | -2.0% | -2.1% | -2.6% | 2.0% |
| Other | 3,083 | 3,348 | 3,015 | 3,688 | 3,362 |
| Other % | 50.6% | 58.7% | 52.9% | 65.1% | 56.6% |
| Latino | 1,061 | 854 | 791 | 490 | 546 |
| Latino % | | | | | 9.2% |
| Asian | | | | | 1,961 |
| Asian % | 30.3% | 25.3% | 31.2% | 25.7% | 33.0% |
| Black | 101 | 55 | 110 | 33 | 67 |
| Black % | 1.7% | 1.0% | 1.9% | 0.6% | 1.1% |

Total Deviation of 7.3%

Citizen Voting Age Population (CVAP)

| | 1 | 2 | 3 | 4 | 5 |
|---------------|-------|-------|-------|-------|-------|
| Total CVAP | 3,306 | 3,680 | 3,449 | 3,759 | 3,971 |
| Other CVAP | 2,156 | 2,564 | 2,277 | 2,475 | 2,680 |
| Other CVAP % | 65.2% | 69.7% | 66.0% | 65.8% | 67.5% |
| Latino CVAP | 374 | 433 | 355 | 297 | 442 |
| Latino CVAP % | 11.3% | 11.8% | 10.3% | 7.9% | 11.1% |
| Asian CVAP | 703 | 654 | 708 | 980 | 815 |
| Asian CVAP % | 21.3% | 17.8% | 20.5% | 26.1% | 20.5% |
| Black CVAP | 73 | 28 | 110 | 8 | 34 |
| Black CVAP % | 2.2% | 0.8% | 3.2% | 0.2% | 0.9% |



2020 Census

| | 1 | 2 | 3 | 4 | 5 |
|-------------|-------------------------|-------|-------|-------|-------|
| Population | 5,598 | 5,804 | 6,136 | 5,820 | 5,730 |
| Deviation | -220 | -14 | 318 | 2 | -88 |
| Deviation % | -3.8% | -0.2% | 5.5% | 0.0% | -1.5% |
| Other | 3,196 | 3,291 | 4,052 | 3,319 | 2,638 |
| Other % | 57.1% | 56.7% | 66.0% | 57.0% | 46.0% |
| Latino | 491 | 880 | 560 | 772 | 1,089 |
| Latino % | Total Deviation of 9.3% | | | | 19.0% |
| Asian | | | | | 1,896 |
| Asian % | 33.0% | 27.2% | 24.2% | 28.9% | 33.1% |
| Black | 61 | 57 | 42 | 99 | 107 |
| Black % | 1.1% | 1.0% | 0.7% | 1.7% | 1.9% |

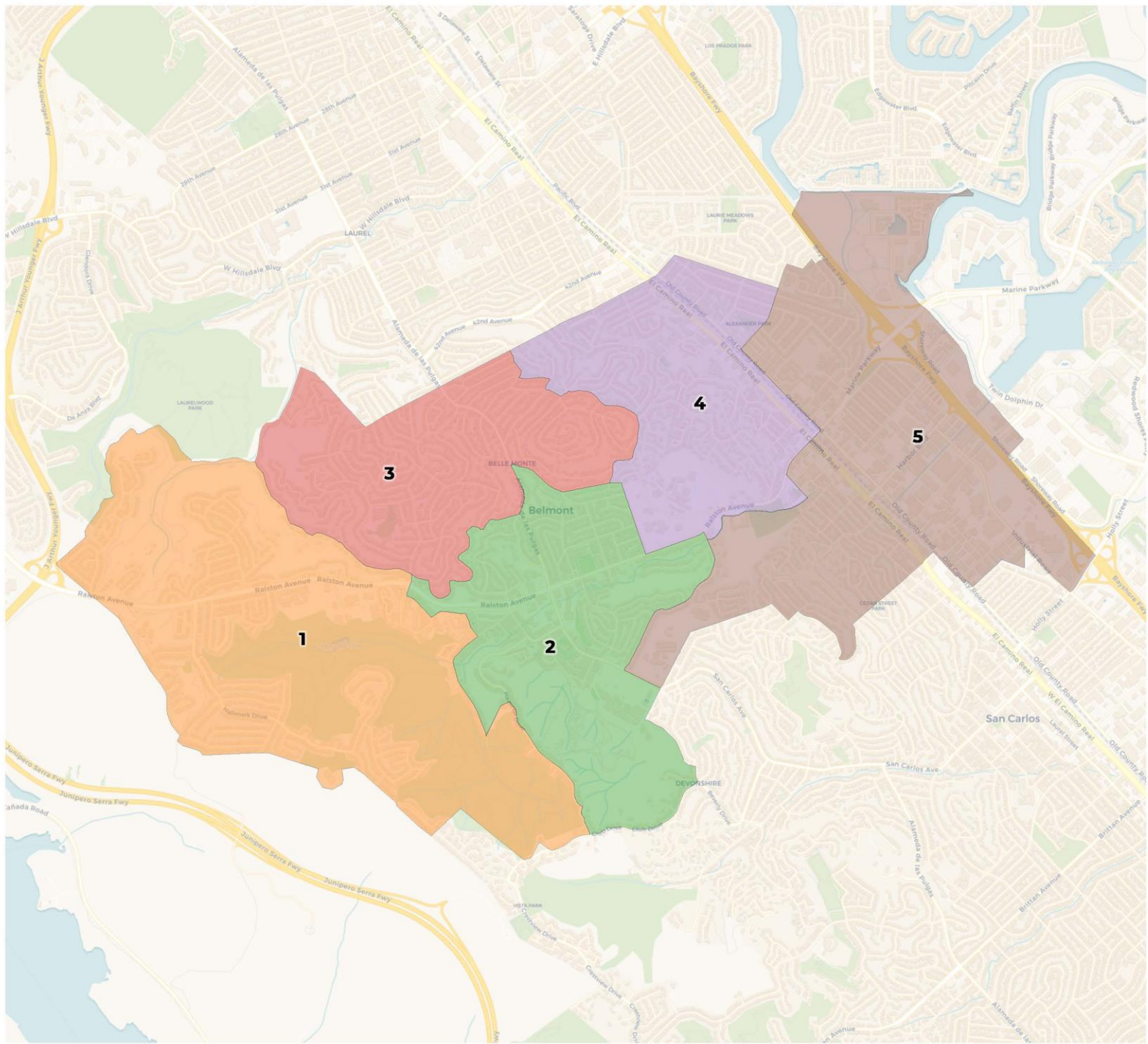
Citizen Voting Age Population (CVAP)

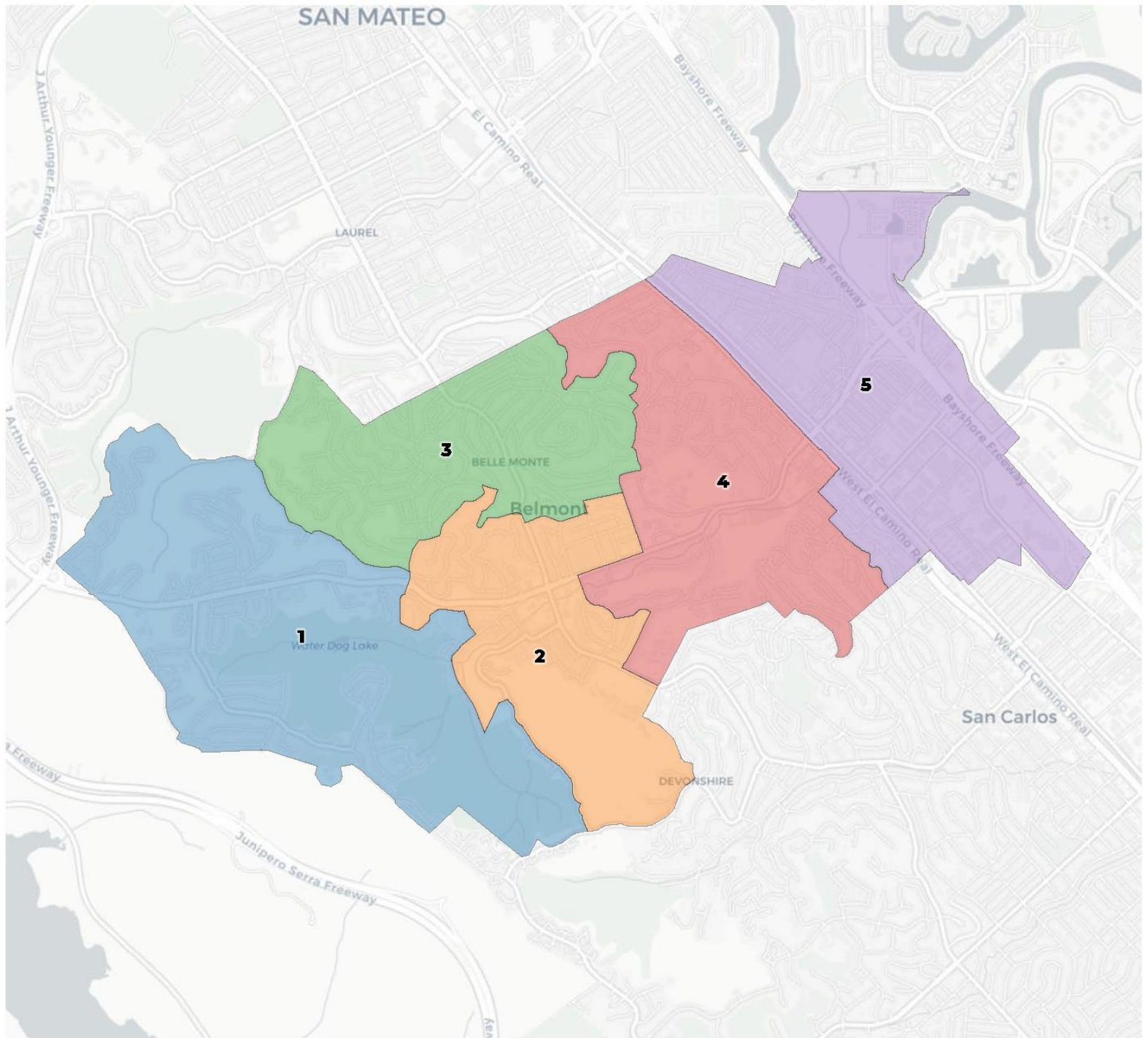
| | 1 | 2 | 3 | 4 | 5 |
|---------------|-------|-------|-------|-------|-------|
| Total CVAP | 3,725 | 3,796 | 3,971 | 3,717 | 2,956 |
| Other CVAP | 2,542 | 2,607 | 2,618 | 2,626 | 1,758 |
| Other CVAP % | 68.2% | 68.7% | 65.9% | 70.7% | 59.5% |
| Latino CVAP | 395 | 461 | 311 | 344 | 390 |
| Latino CVAP % | 10.6% | 12.1% | 7.8% | 9.3% | 13.2% |
| Asian CVAP | 757 | 705 | 1,031 | 634 | 732 |
| Asian CVAP % | 20.3% | 18.6% | 26.0% | 17.1% | 24.8% |
| Black CVAP | 31 | 24 | 10 | 112 | 76 |
| Black CVAP % | 0.8% | 0.6% | 0.3% | 3.0% | 2.6% |



**REDISTRICTING
PARTNERS**

**Mid-Peninsula Water
District
Draft Plan 1**



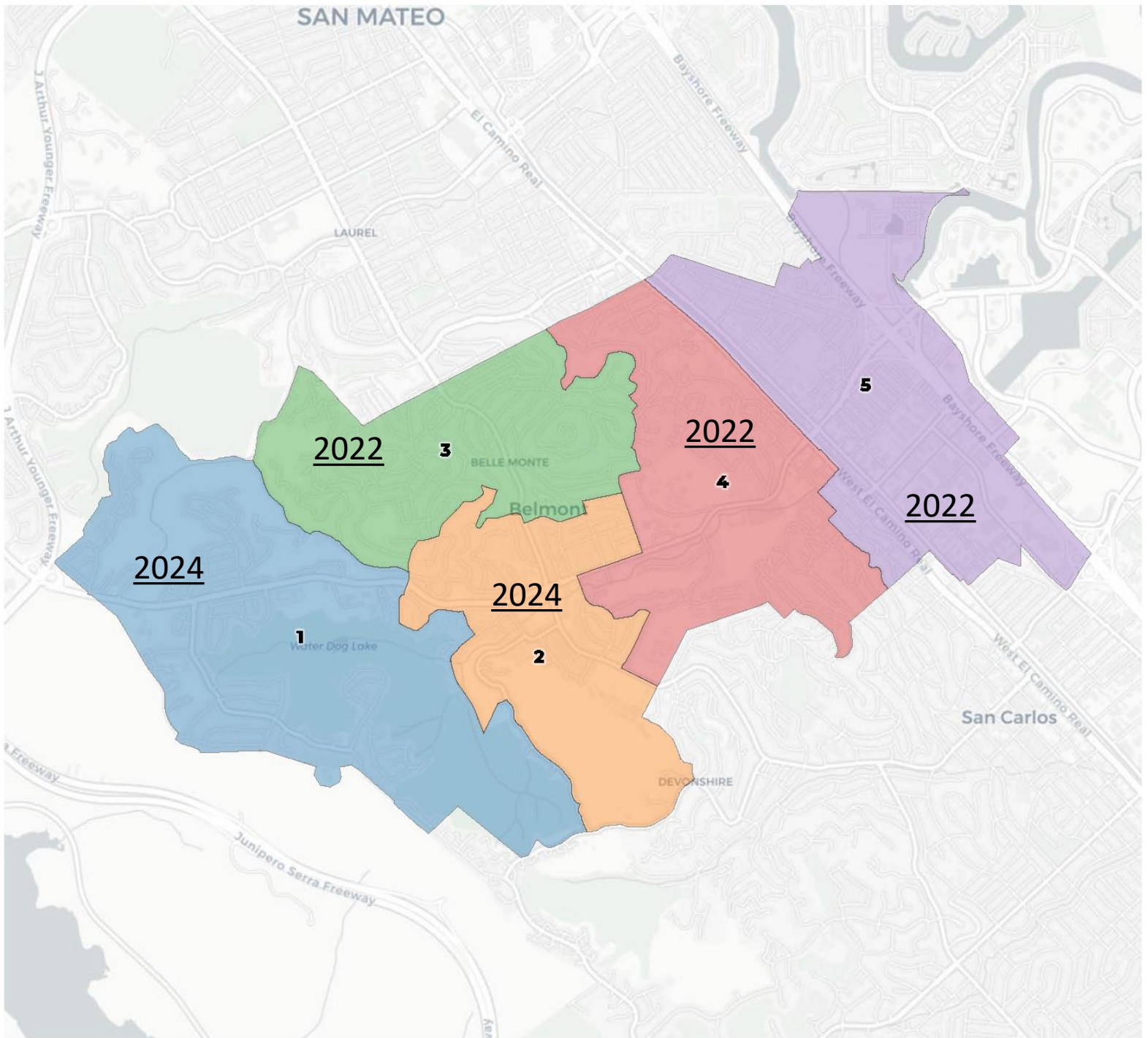


Sequencing of Election Districts

Sequencing determines when each division is up for election, and then residents will vote in those divisions every four years thereafter.

After talking with staff, we recommend the following sequencing:

| 2022 | 2024 |
|--|---|
| <ul style="list-style-type: none">• Division 3• Division 4• Division 5 | <ul style="list-style-type: none">• Division 1• Division 2 |



Districting Process

Timeline for Upcoming Meetings

January 27th, 2022

Board Meeting on Draft Maps

February 24th, 2022

Board Meeting on Draft Maps

March 24th, 2022

Final Vote on Maps