



Redistricting Data & Draft Maps



What is Redistricting

Definition

Redistricting is the process of adjusting district lines every 10 years after the release of the U.S. Census. The well-known examples are Congress and the legislature.

Within the U.S., redistricting has become an extremely politicized process and has been the subject of more high-profile Supreme Court decisions than any other part of our elections system.

Traditional Redistricting Principles

Preventing a Districting from Becoming a Gerrymander

There are a number of criteria that have been used nationally and upheld by courts.

- Relatively equal size – people, not citizens
- Contiguous – districts should not hop/jump
- Keep districts compact – appearance/function
- Maintain “*communities of interest*”
- Follow city/county/local government lines

Draft Map Options

- Draft Plan 1
- Draft Plan 2

REDISTRICTING PARTNERS Mid Peninsula Water District
Draft Plan 2

2020 Census

	1	2	3	4	5
Population	5,298	5,804	6,136	5,820	5,720
Deviation	-220	-44	288	2	-48
Deviation %	-3.9%	-0.7%	4.7%	0.0%	-0.8%
Other	1,296	1,291	4,052	1,339	1,428
Other %	24.5%	22.2%	66.0%	22.9%	25.0%
Latino	48	880	960	722	1,089
Latino %	0.9%	15.2%	15.6%	12.4%	19.0%
Asian					
Asian %					
Black					
Black %					

Citizen Voting Age

Total CVAP	
Other CVAP %	
Latino CVAP %	
Asian CVAP %	
Asian CVAP %	
Black CVAP	
Black CVAP %	

Mid Peninsula Water District
Draft Plan 2



REDISTRICTING PARTNERS Mid Peninsula Water District
Draft Plan 1

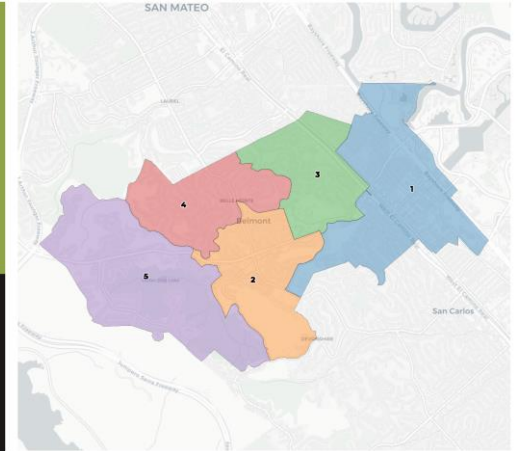
2020 Census

	1	2	3	4	5
Population	6,092	5,701	5,695	5,664	5,936
Deviation	276	-391	-422	-454	-180
Deviation %	4.5%	-6.8%	-7.4%	-8.0%	-3.0%
Other	1,083	1,348	1,055	1,688	1,362
Other %	17.8%	23.6%	18.5%	29.8%	22.9%
Latino	1,061	854	799	490	946
Latino %	17.4%	15.0%	13.9%	8.7%	16.3%
Asian	1,847				
Asian %	30.3%				
Black	101				
Black %	1.7%				

Citizen Voting Age Popul

Total CVAP	1,336
Other CVAP %	63.2%
Latino CVAP %	37%
Latino CVAP %	13.3%
Asian CVAP	703
Asian CVAP %	52.6%
Black CVAP	72
Black CVAP %	5.4%

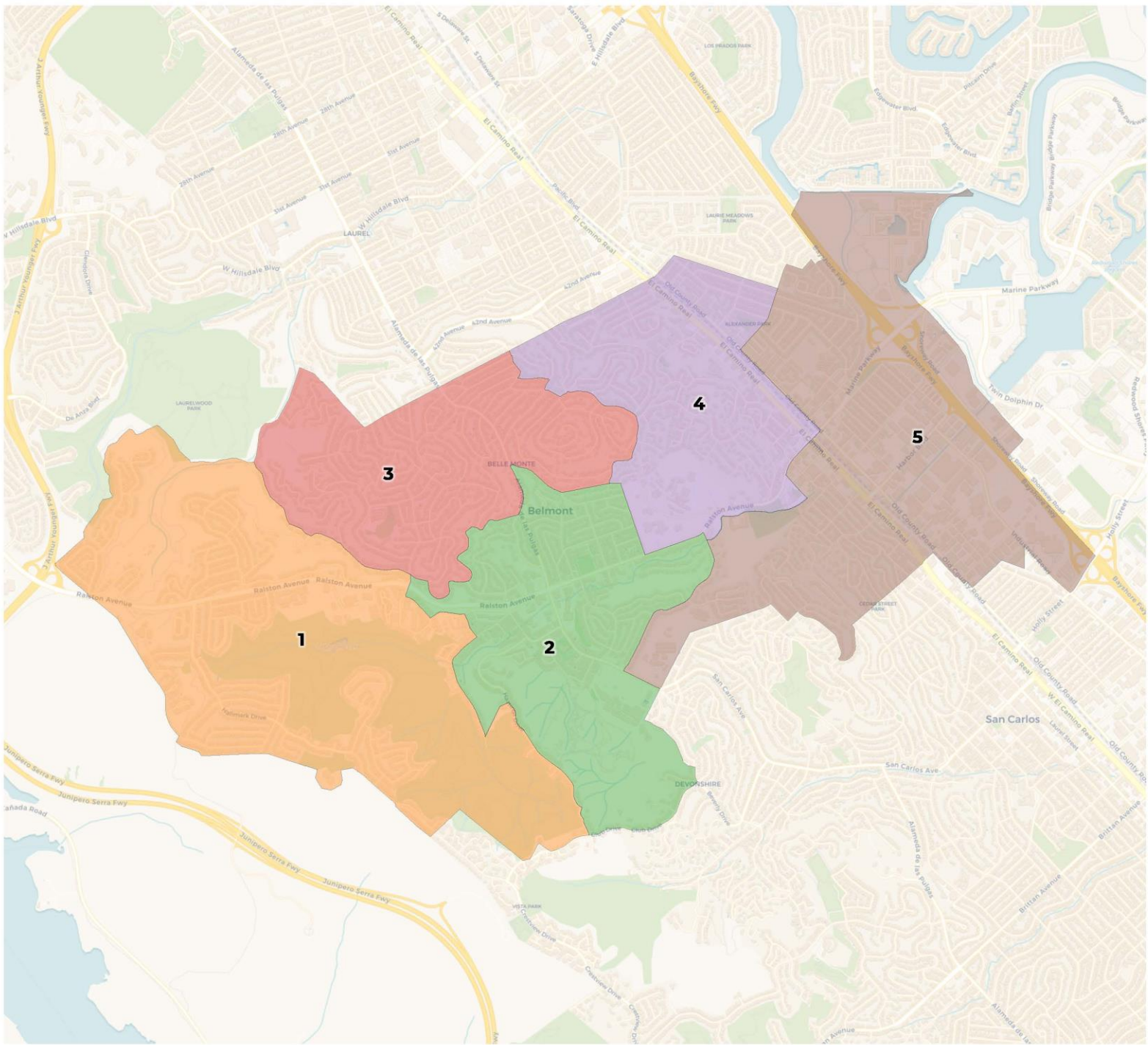
Mid Peninsula Water District
Draft Plan 1





**REDISTRICTING
PARTNERS**

**Mid-Peninsula Water
District
Draft Plan 1**



2020 Census

	1	2	3	4	5
Population	6,092	5,701	5,695	5,664	5,936
Deviation	274	-117	-123	-154	118
Deviation %	4.7%	-2.0%	-2.1%	-2.6%	2.0%
Other	3,083	3,348	3,015	3,688	3,362
Other %	50.6%	58.7%	52.9%	65.1%	56.6%
Latino	1,061	854	791	490	546
Latino %	17.4%	15.0%	13.9%	8.7%	9.2%
Asian	1,847	1,444	1,779	1,453	1,961
Asian %	30.3%	25.3%	31.2%	25.7%	33.0%
Black	101	55	110	33	67
Black %	1.7%	1.0%	1.9%	0.6%	1.1%

Citizen Voting Age Population (CVAP)

	1	2	3	4	5
Total CVAP	3,306	3,680	3,449	3,759	3,971
Other CVAP	2,156	2,564	2,277	2,475	2,680
Other CVAP %	65.2%	69.7%	66.0%	65.8%	67.5%
Latino CVAP	374	433	355	297	442
Latino CVAP %	11.3%	11.8%	10.3%	7.9%	11.1%
Asian CVAP	703	654	708	980	815
Asian CVAP %	21.3%	17.8%	20.5%	26.1%	20.5%
Black CVAP	73	28	110	8	34
Black CVAP %	2.2%	0.8%	3.2%	0.2%	0.9%

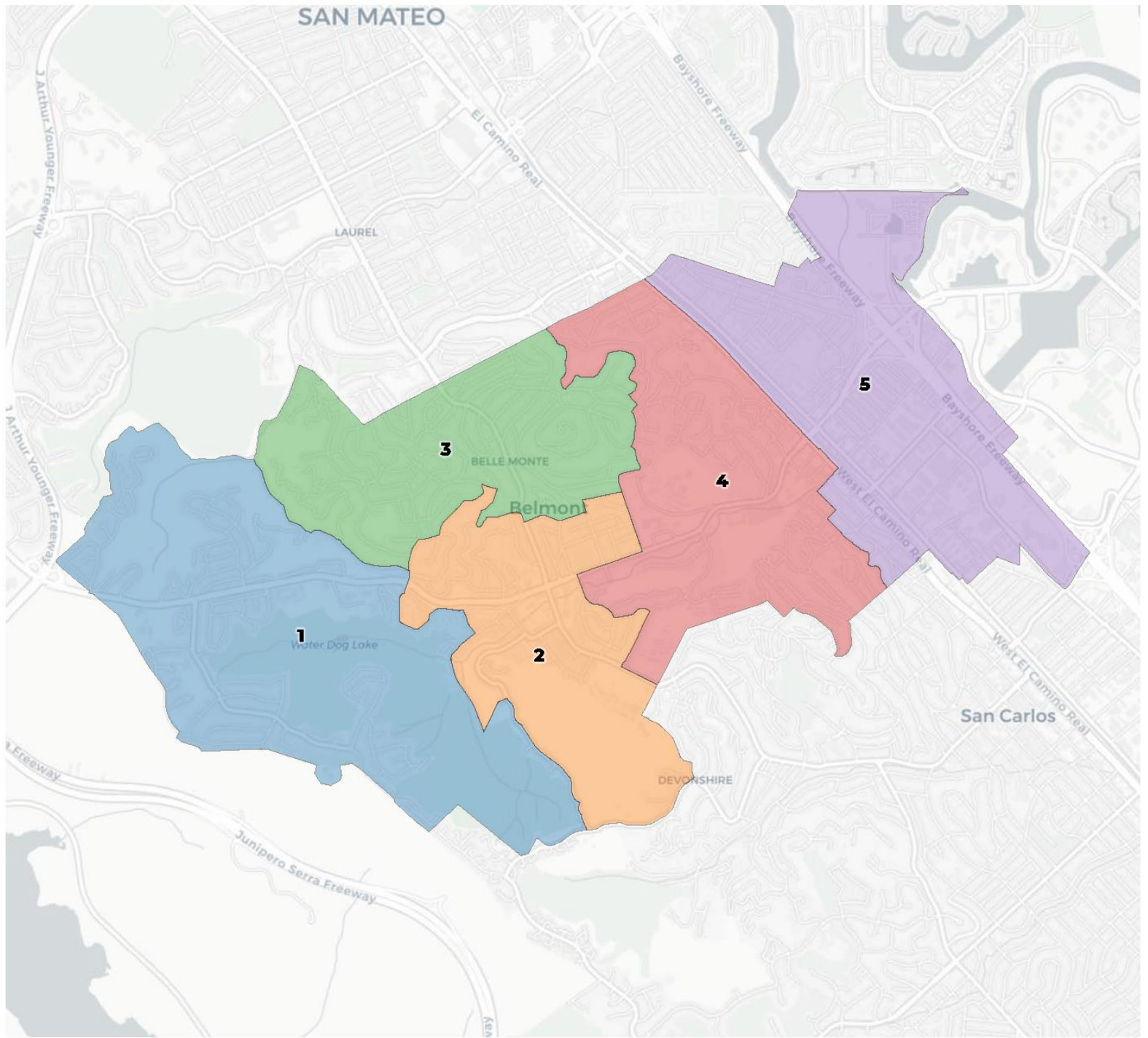
2020 Census

	1	2	3	4	5
Population	6,092	5,701	5,695	5,664	5,936
Deviation	274	-117	-123	-154	118
Deviation %	4.7%	-2.0%	-2.1%	-2.6%	2.0%
Other	3,083	3,348	3,015	3,688	3,362
Other %	50.6%	58.7%	52.9%	65.1%	56.6%
Latino	1,061	854	791	490	546
Latino %					9.2%
Asian					1,961
Asian %	30.3%	25.3%	31.2%	25.7%	33.0%
Black	101	55	110	33	67
Black %	1.7%	1.0%	1.9%	0.6%	1.1%

Total Deviation of 7.3%

Citizen Voting Age Population (CVAP)

	1	2	3	4	5
Total CVAP	3,306	3,680	3,449	3,759	3,971
Other CVAP	2,156	2,564	2,277	2,475	2,680
Other CVAP %	65.2%	69.7%	66.0%	65.8%	67.5%
Latino CVAP	374	433	355	297	442
Latino CVAP %	11.3%	11.8%	10.3%	7.9%	11.1%
Asian CVAP	703	654	708	980	815
Asian CVAP %	21.3%	17.8%	20.5%	26.1%	20.5%
Black CVAP	73	28	110	8	34
Black CVAP %	2.2%	0.8%	3.2%	0.2%	0.9%



2020 Census

	1	2	3	4	5
Population	5,598	5,804	6,136	5,820	5,730
Deviation	-220	-14	318	2	-88
Deviation %	-3.8%	-0.2%	5.5%	0.0%	-1.5%
Other	3,196	3,291	4,052	3,319	2,638
Other %	57.1%	56.7%	66.0%	57.0%	46.0%
Latino	491	880	560	722	1,089
Latino %	8.8%	15.2%	9.1%	12.4%	19.0%
Asian	1,850	1,576	1,482	1,680	1,896
Asian %	33.0%	27.2%	24.2%	28.9%	33.1%
Black	61	57	42	99	107
Black %	1.1%	1.0%	0.7%	1.7%	1.9%

Citizen Voting Age Population (CVAP)

	1	2	3	4	5
Total CVAP	3,725	3,796	3,971	3,717	2,956
Other CVAP	2,542	2,607	2,618	2,626	1,758
Other CVAP %	68.2%	68.7%	65.9%	70.7%	59.5%
Latino CVAP	395	461	311	344	390
Latino CVAP %	10.6%	12.1%	7.8%	9.3%	13.2%
Asian CVAP	757	705	1,031	634	732
Asian CVAP %	20.3%	18.6%	26.0%	17.1%	24.8%
Black CVAP	31	24	10	112	76
Black CVAP %	0.8%	0.6%	0.3%	3.0%	2.6%

2020 Census

	1	2	3	4	5
Population	5,598	5,804	6,136	5,820	5,730
Deviation	-220	-14	318	2	-88
Deviation %	-3.8%	-0.2%	5.5%	0.0%	-1.5%
Other	3,196	3,291	4,052	3,319	2,638
Other %	57.1%	56.7%	66.0%	57.0%	46.0%
Latino	491	880	560	772	1,089
Latino %	Total Deviation of 9.3%				
Asian					
Asian %	33.0%	27.2%	24.2%	28.9%	33.1%
Black	61	57	42	99	107
Black %	1.1%	1.0%	0.7%	1.7%	1.9%

Citizen Voting Age Population (CVAP)

	1	2	3	4	5
Total CVAP	3,725	3,796	3,971	3,717	2,956
Other CVAP	2,542	2,607	2,618	2,626	1,758
Other CVAP %	68.2%	68.7%	65.9%	70.7%	59.5%
Latino CVAP	395	461	311	344	390
Latino CVAP %	10.6%	12.1%	7.8%	9.3%	13.2%
Asian CVAP	757	705	1,031	634	732
Asian CVAP %	20.3%	18.6%	26.0%	17.1%	24.8%
Black CVAP	31	24	10	112	76
Black CVAP %	0.8%	0.6%	0.3%	3.0%	2.6%

Redistricting Process

Timeline for Upcoming Meetings

January 27th, 2022

Board Meeting on Draft Maps

February 24th, 2022

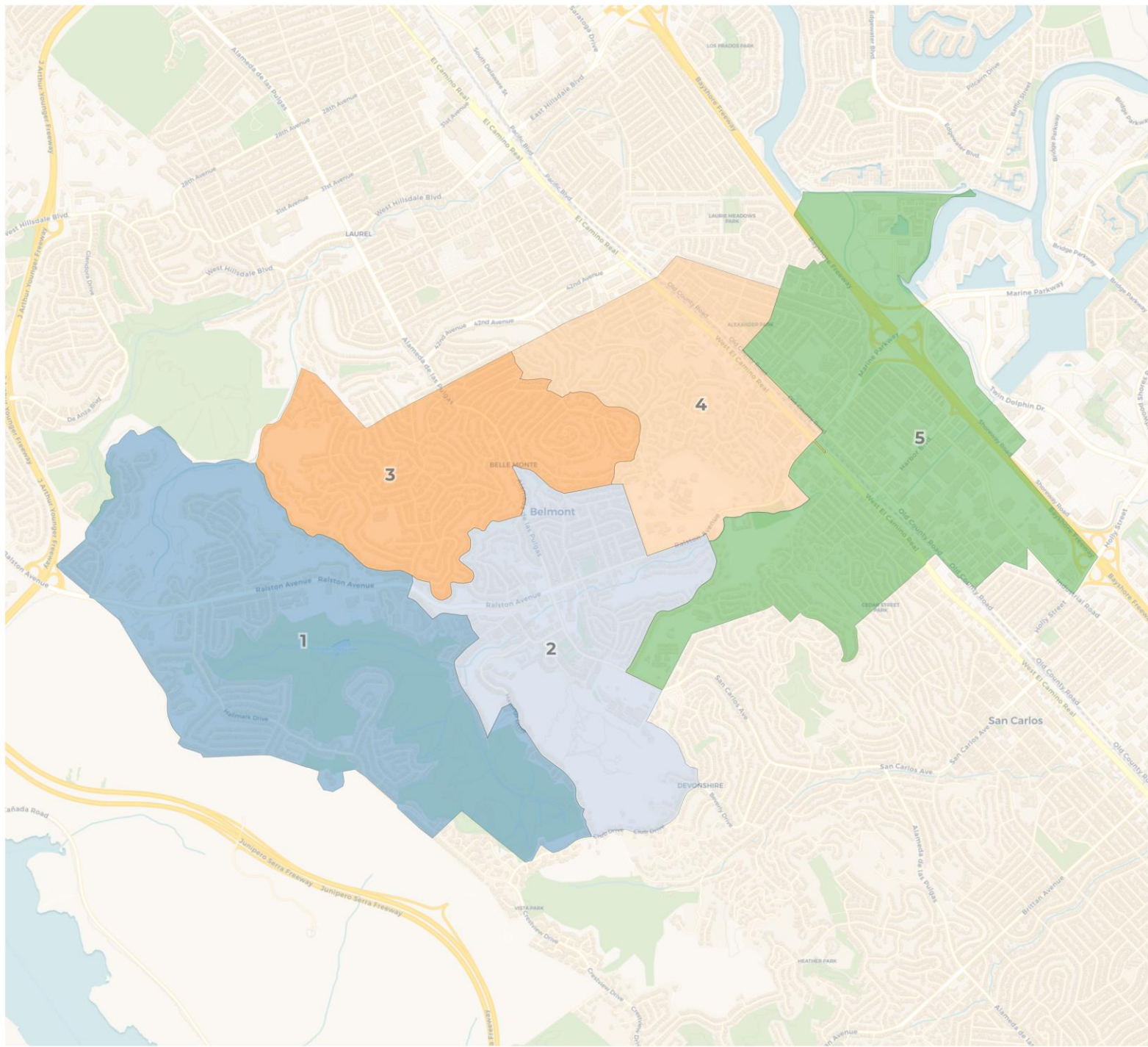
Board Meeting on Draft Maps

March 24th, 2022

Final Vote on Maps



**REDISTRICTING
PARTNERS**



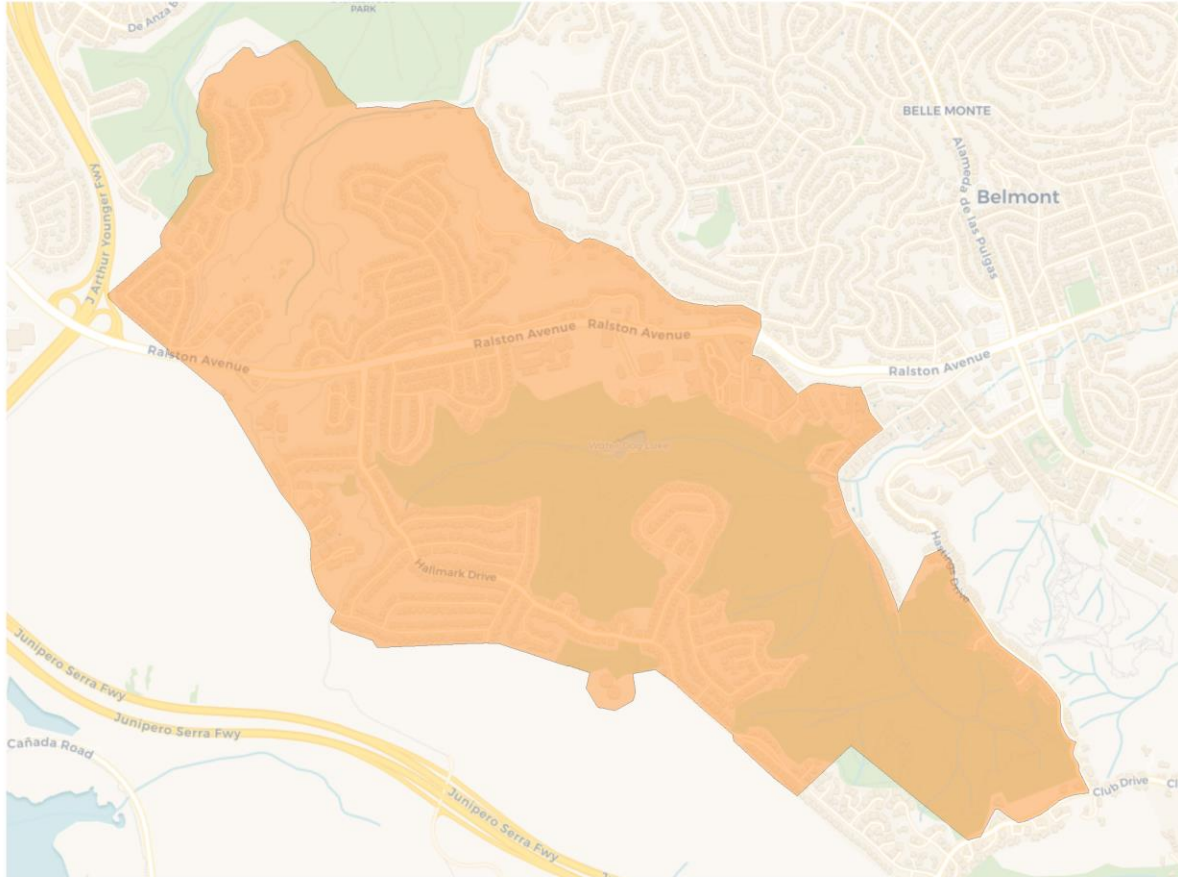
2020 Census

	1	2	3	4	5
Population	6,092	5,701	5,695	5,664	5,936
Deviation	274	-117	-123	-154	118
Deviation %	4.7%	-2.0%	-2.1%	-2.6%	2.0%
Other	3,083	3,348	3,015	3,688	3,362
Other %	50.6%	58.7%	52.9%	65.1%	56.6%
Latino	1,061	854	791	490	546
Latino %	17.4%	15.0%	13.9%	8.7%	9.2%
Asian	1,847	1,444	1,779	1,453	1,961
Asian %	30.3%	25.3%	31.2%	25.7%	33.0%
Black	101	55	110	33	67
Black %	1.7%	1.0%	1.9%	0.6%	1.1%

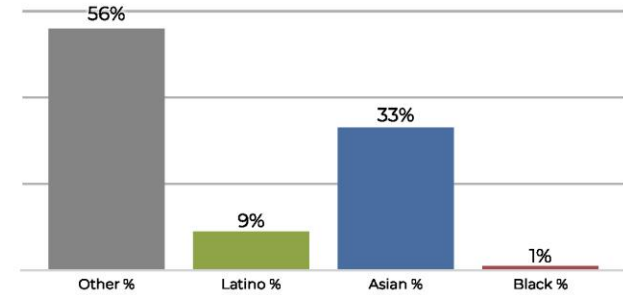
Citizen Voting Age Population (CVAP)

	1	2	3	4	5
Total CVAP	3,306	3,680	3,449	3,759	3,971
Other CVAP	2,156	2,564	2,277	2,475	2,680
Other CVAP %	65.2%	69.7%	66.0%	65.8%	67.5%
Latino CVAP	374	433	355	297	442
Latino CVAP %	11.3%	11.8%	10.3%	7.9%	11.1%
Asian CVAP	703	654	708	980	815
Asian CVAP %	21.3%	17.8%	20.5%	26.1%	20.5%
Black CVAP	73	28	110	8	34
Black CVAP %	2.2%	0.8%	3.2%	0.2%	0.9%

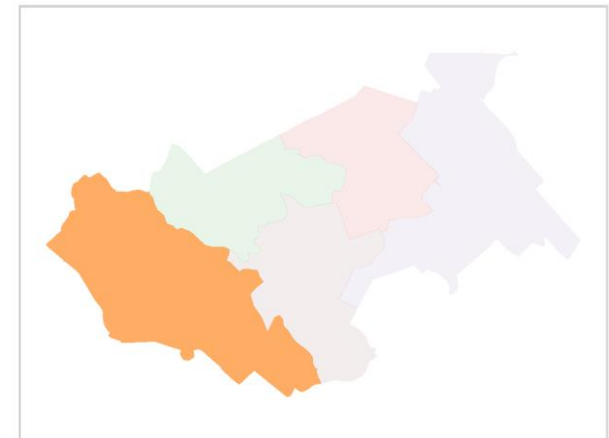
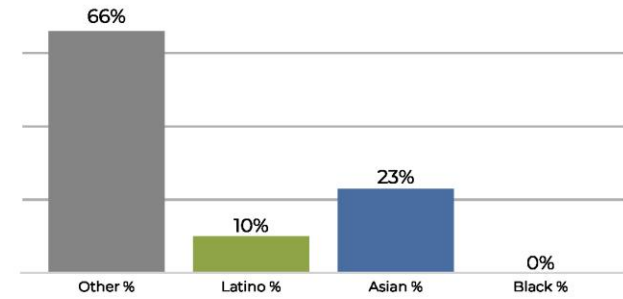
Division 1



2020 Census

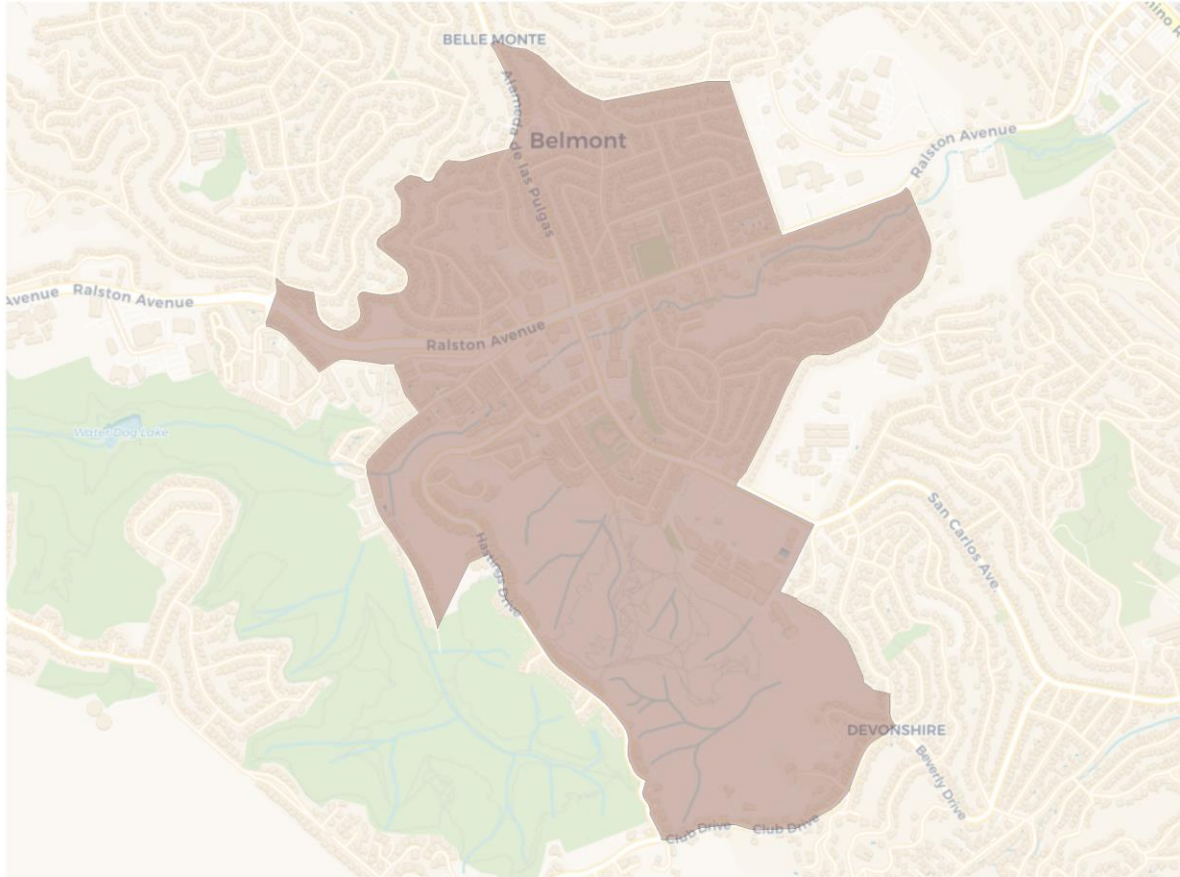


Citizen Voting Age Population

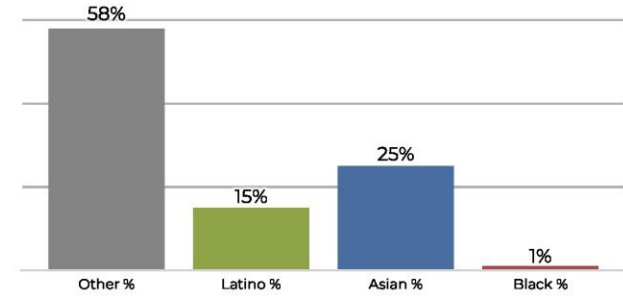


Population	Deviation	Deviation %	Other	Other %	Latino	Latino %	Asian	Asian %	Black	Black %
5,936	118	2.0%	3,362	56.6%	546	9.2%	1,961	33.0%	67	1.1%
Total CVAP	Other CVAP	Other CVAP %	Latino CVAP	Latino CVAP %	Asian CVAP	Asian CVAP %	Black CVAP	Black CVAP %		
3,961	2,617	66.1%	399	10.1%	911	23.0%	34	0.9%		

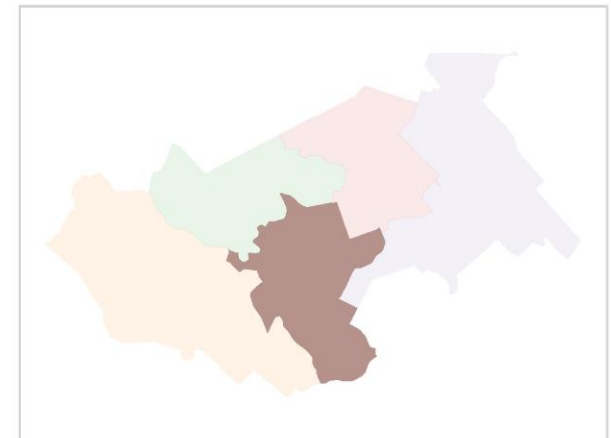
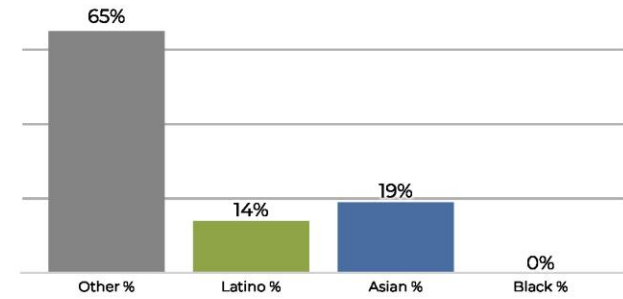
Divison 2



2020 Census

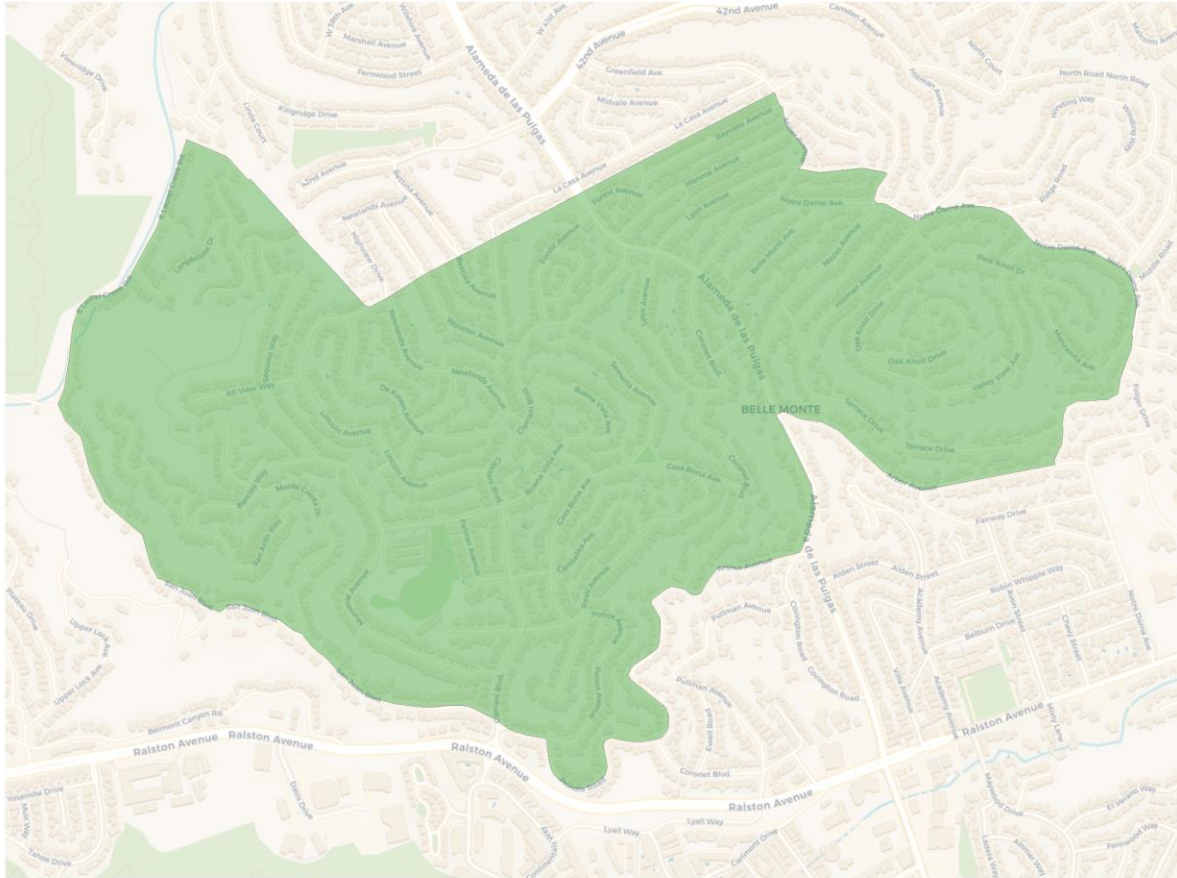


Citizen Voting Age Population

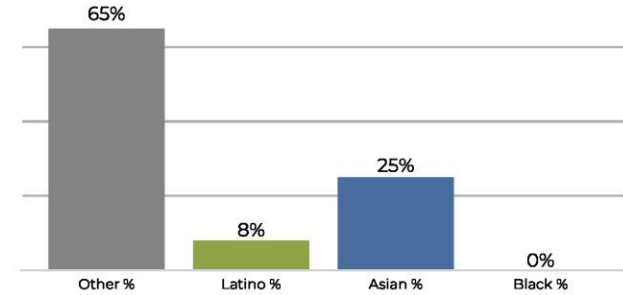


Population	Deviation	Deviation %	Other	Other %	Latino	Latino %	Asian	Asian %	Black	Black %
5,701	-117	-2.0%	3,348	58.7%	854	15.0%	1,444	25.3%	55	1.0%
Total CVAP	Other CVAP	Other CVAP %	Latino CVAP	Latino CVAP %	Asian CVAP	Asian CVAP %	Black CVAP	Black CVAP %		
3,792	2,483	65.5%	556	14.7%	735	19.4%	18	0.5%		

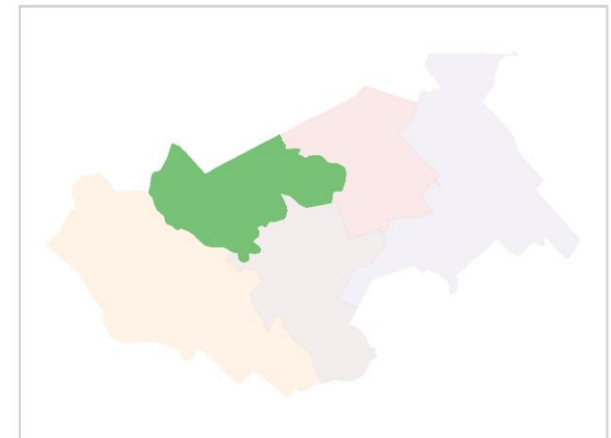
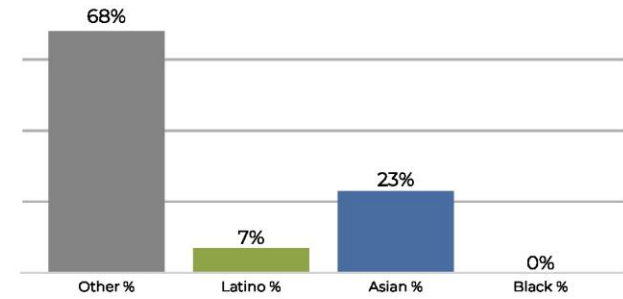
Division 3



2020 Census

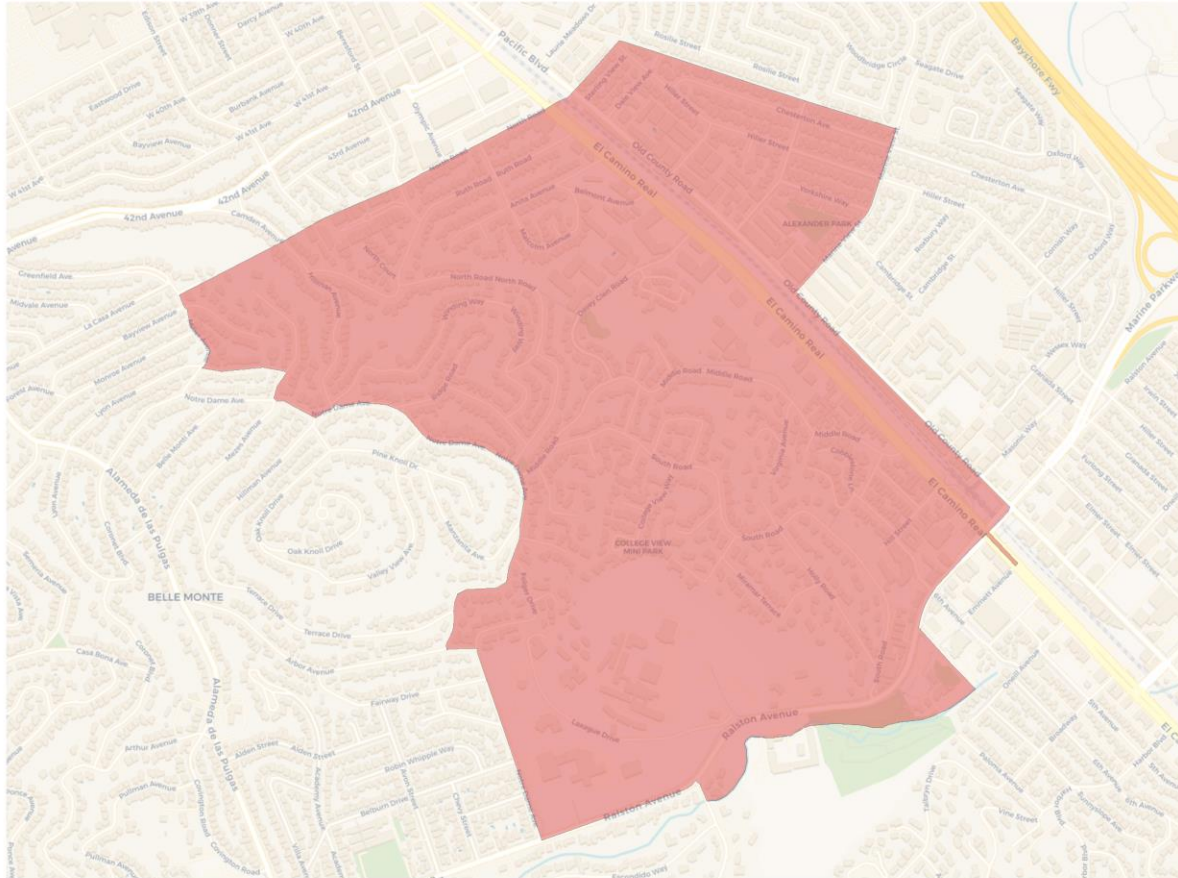


Citizen Voting Age Population

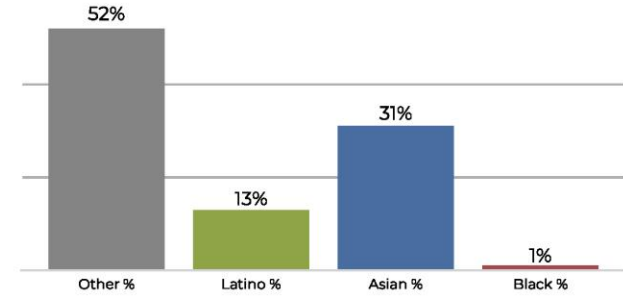


Population	Deviation	Deviation %	Other	Other %	Latino	Latino %	Asian	Asian %	Black	Black %
5,664	-154	-2.6%	3,688	65.1%	490	8.7%	1,453	25.7%	33	0.6%
Total CVAP	Other CVAP	Other CVAP %	Latino CVAP	Latino CVAP %	Asian CVAP	Asian CVAP %	Black CVAP	Black CVAP %		
3,527	2,404	68.2%	272	7.7%	844	23.9%	7	0.2%		

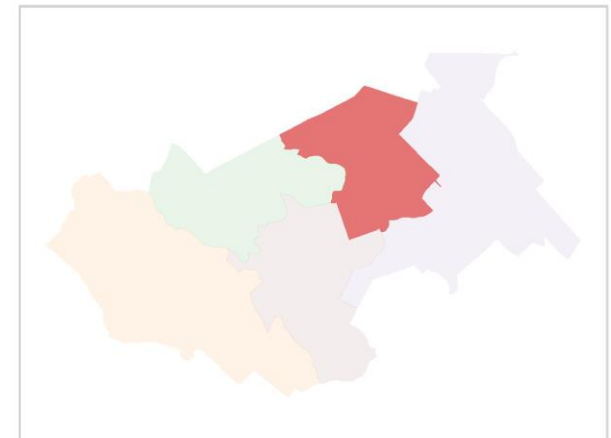
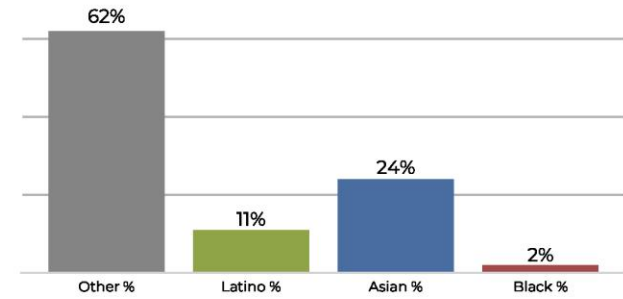
Division 4



2020 Census

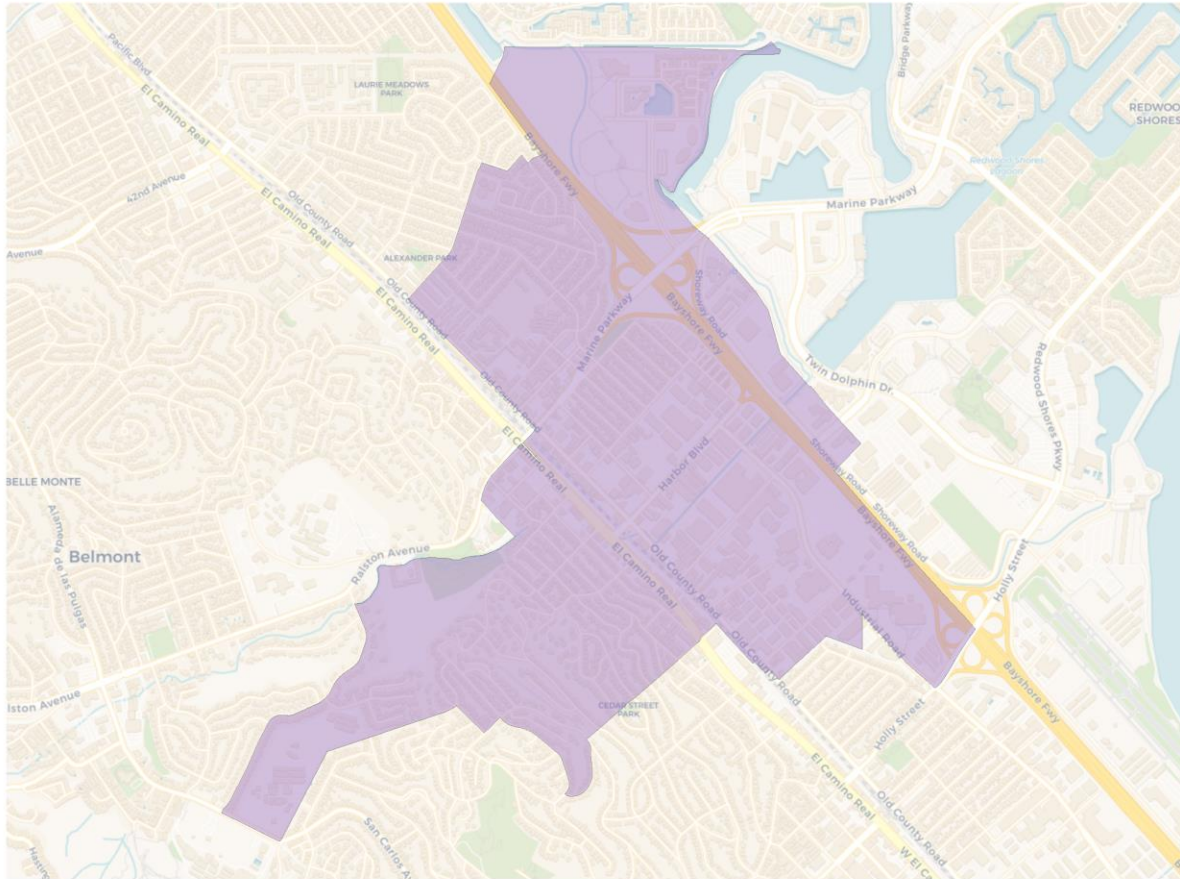


Citizen Voting Age Population

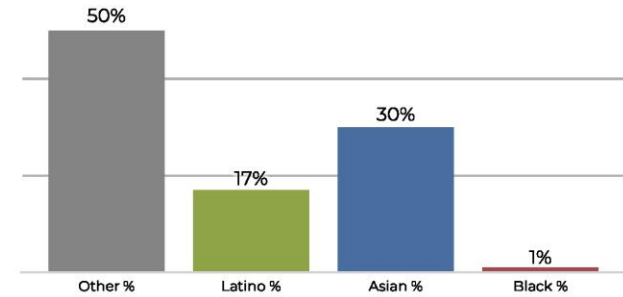


Population	Deviation	Deviation %	Other	Other %	Latino	Latino %	Asian	Asian %	Black	Black %
5,695	-123	-2.1%	3,015	52.9%	791	13.9%	1,779	31.2%	110	1.9%
Total CVAP	Other CVAP	Other CVAP %	Latino CVAP	Latino CVAP %	Asian CVAP	Asian CVAP %	Black CVAP	Black CVAP %		
3,449	2,140	62.0%	403	11.7%	835	24.2%	71	2.1%		

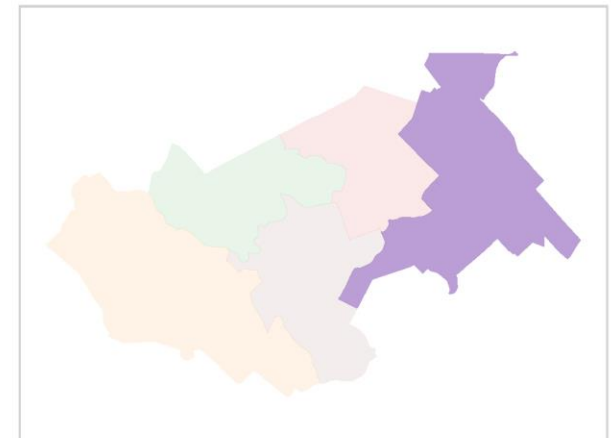
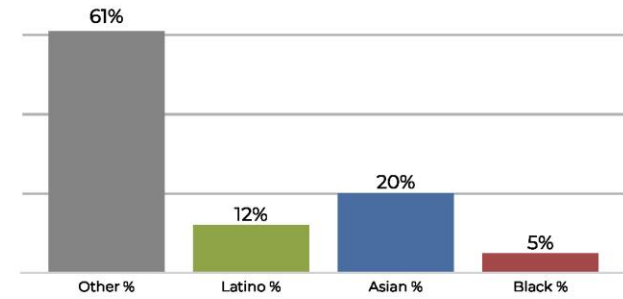
Division 5



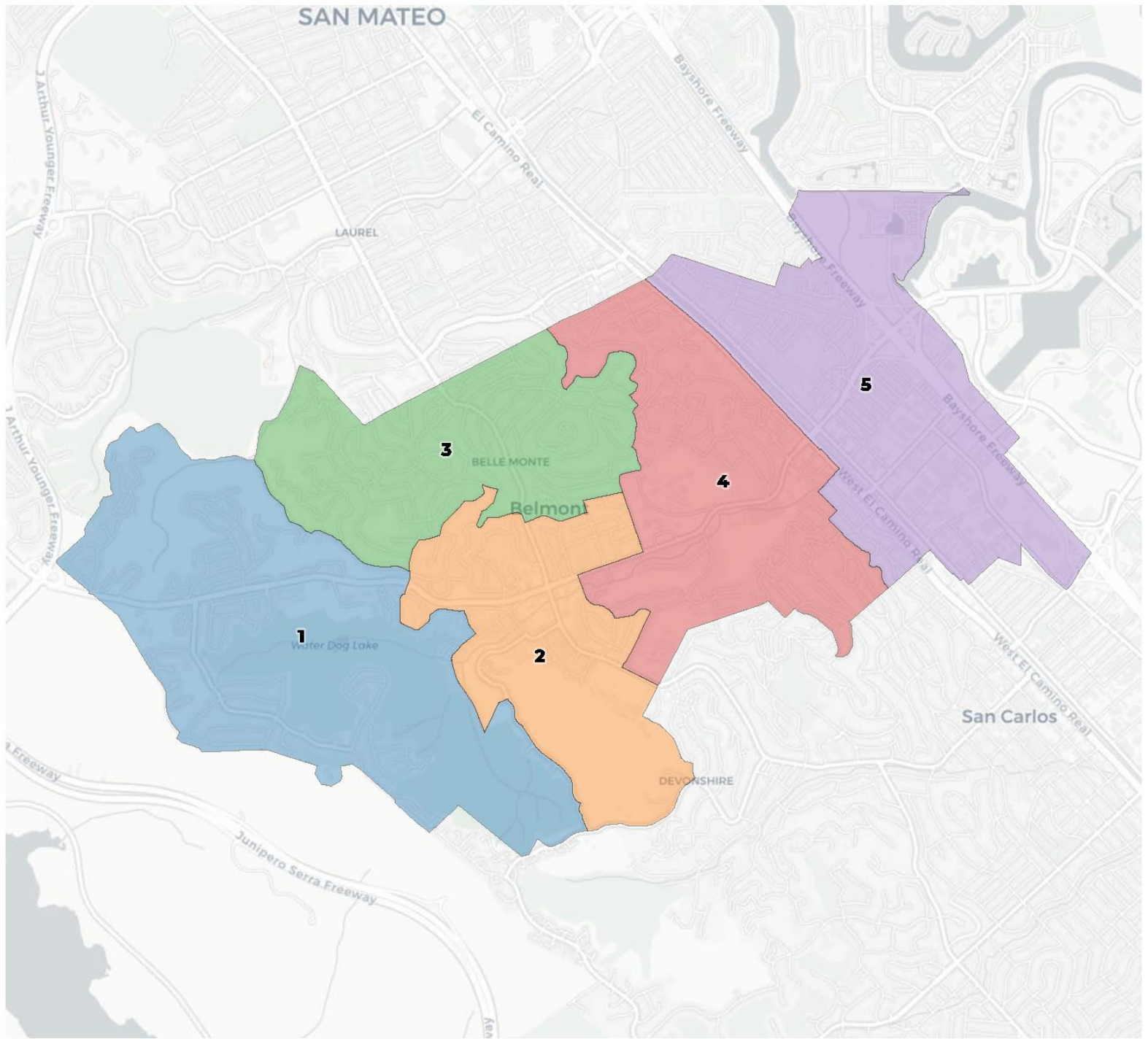
2020 Census



Citizen Voting Age Population



Population	Deviation	Deviation %	Other	Other %	Latino	Latino %	Asian	Asian %	Black	Black %
6,092	274	4.7%	3,083	50.6%	1,061	17.4%	1,847	30.3%	101	1.7%
Total CVAP	Other CVAP	Other CVAP %	Latino CVAP	Latino CVAP %	Asian CVAP	Asian CVAP %	Black CVAP	Black CVAP %		
3,434	2,114	61.6%	431	12.6%	718	20.9%	171	5.0%		



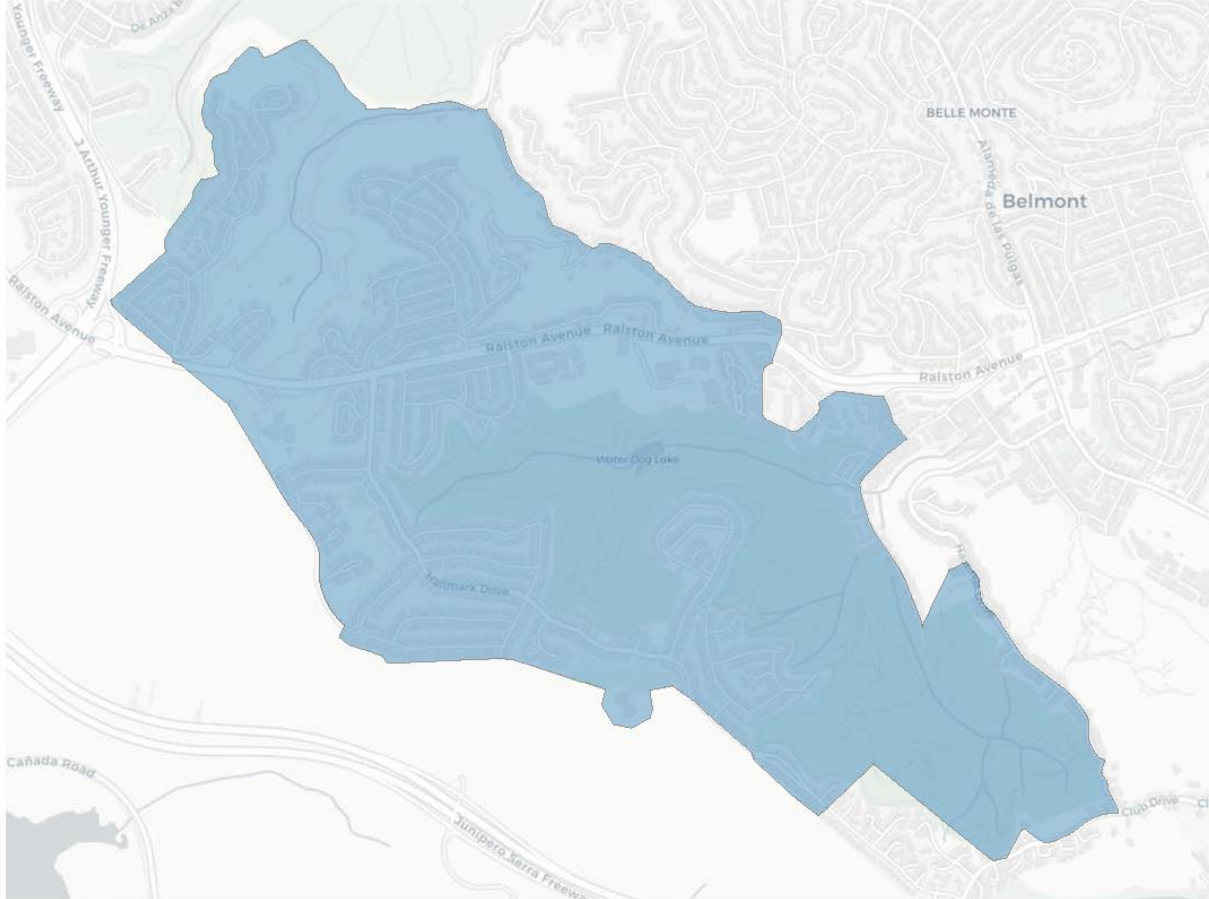
2020 Census

	1	2	3	4	5
Population	5,598	5,804	6,136	5,820	5,730
Deviation	-220	-14	318	2	-88
Deviation %	-3.8%	-0.2%	5.5%	0.0%	-1.5%
Other	3,196	3,291	4,052	3,319	2,638
Other %	57.1%	56.7%	66.0%	57.0%	46.0%
Latino	491	880	560	722	1,089
Latino %	8.8%	15.2%	9.1%	12.4%	19.0%
Asian	1,850	1,576	1,482	1,680	1,896
Asian %	33.0%	27.2%	24.2%	28.9%	33.1%
Black	61	57	42	99	107
Black %	1.1%	1.0%	0.7%	1.7%	1.9%

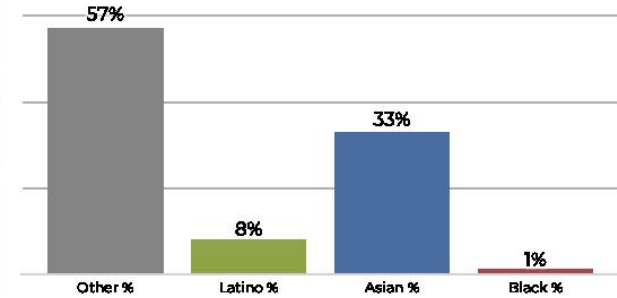
Citizen Voting Age Population (CVAP)

	1	2	3	4	5
Total CVAP	3,725	3,796	3,971	3,717	2,956
Other CVAP	2,542	2,607	2,618	2,626	1,758
Other CVAP %	68.2%	68.7%	65.9%	70.7%	59.5%
Latino CVAP	395	461	311	344	390
Latino CVAP %	10.6%	12.1%	7.8%	9.3%	13.2%
Asian CVAP	757	705	1,031	634	732
Asian CVAP %	20.3%	18.6%	26.0%	17.1%	24.8%
Black CVAP	31	24	10	112	76
Black CVAP %	0.8%	0.6%	0.3%	3.0%	2.6%

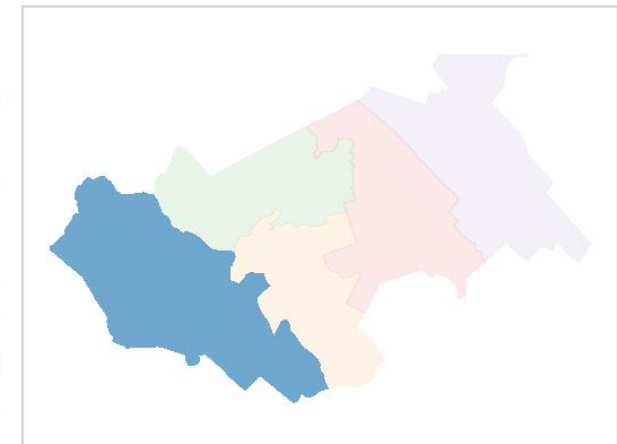
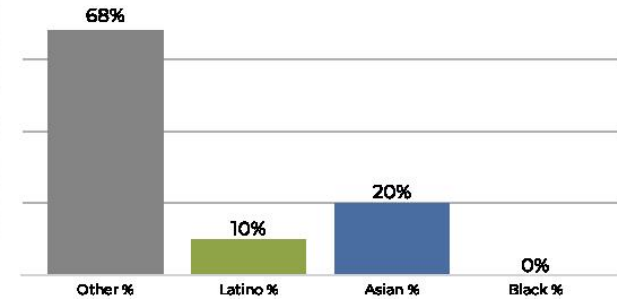
Division 1



2020 Census

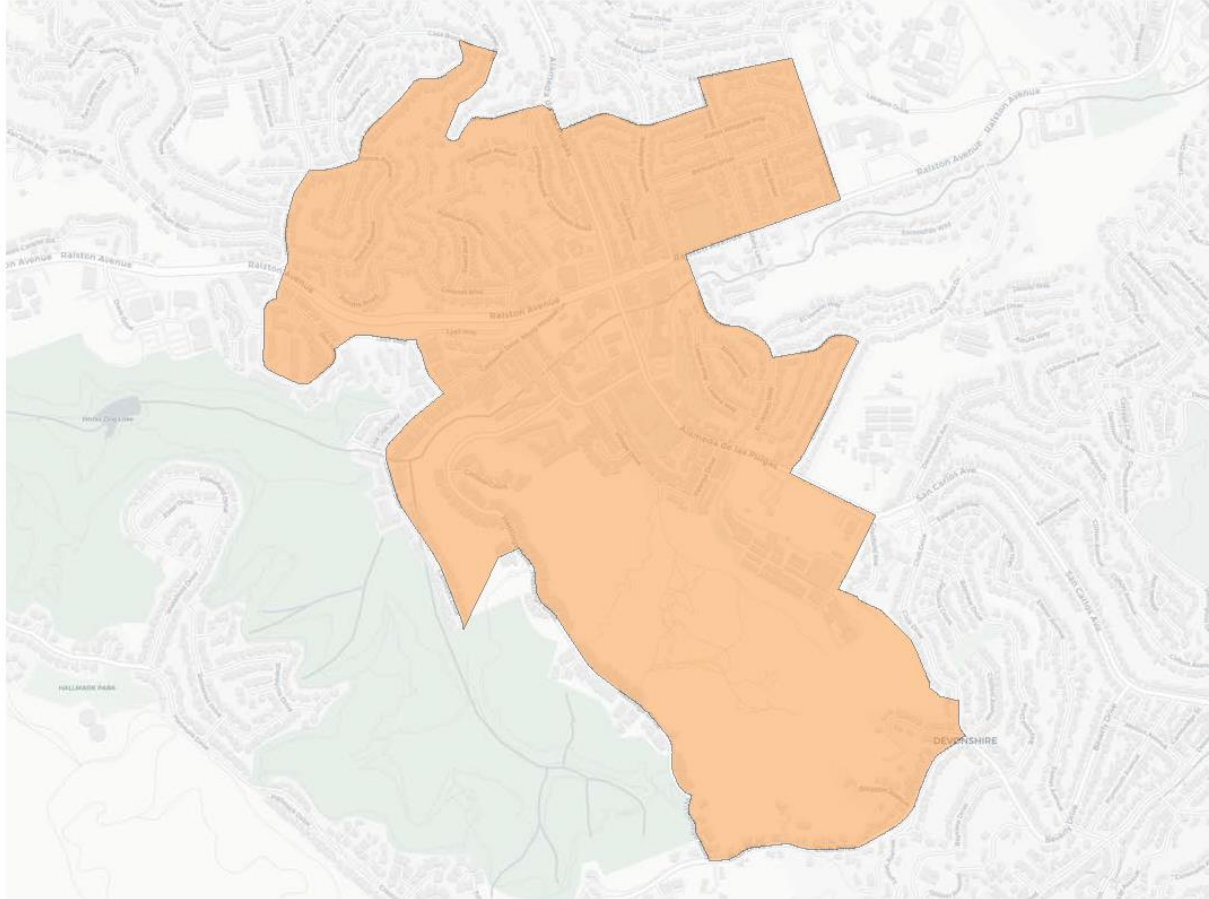


Citizen Voting Age Population

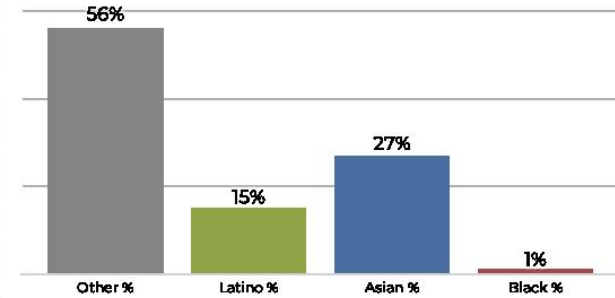


Population	Deviation	Deviation %	Other	Other %	Latino	Latino %	Asian	Asian %	Black	Black %
5,598	-220	-3.8%	3,196	57.1%	491	8.8%	1,850	33.0%	61	1.1%
Total CVAP	Other CVAP	Other CVAP %	Latino CVAP	Latino CVAP %	Asian CVAP	Asian CVAP %	Black CVAP	Black CVAP %		
3,725	2,542	68.2%	395	10.6%	757	20.3%	31	0.8%		

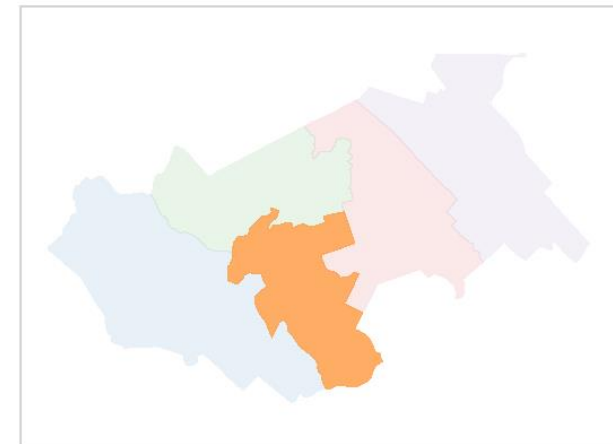
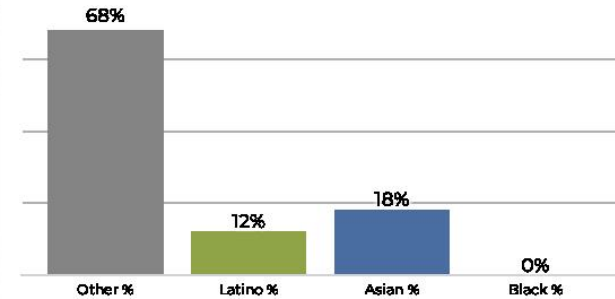
Division 2



2020 Census

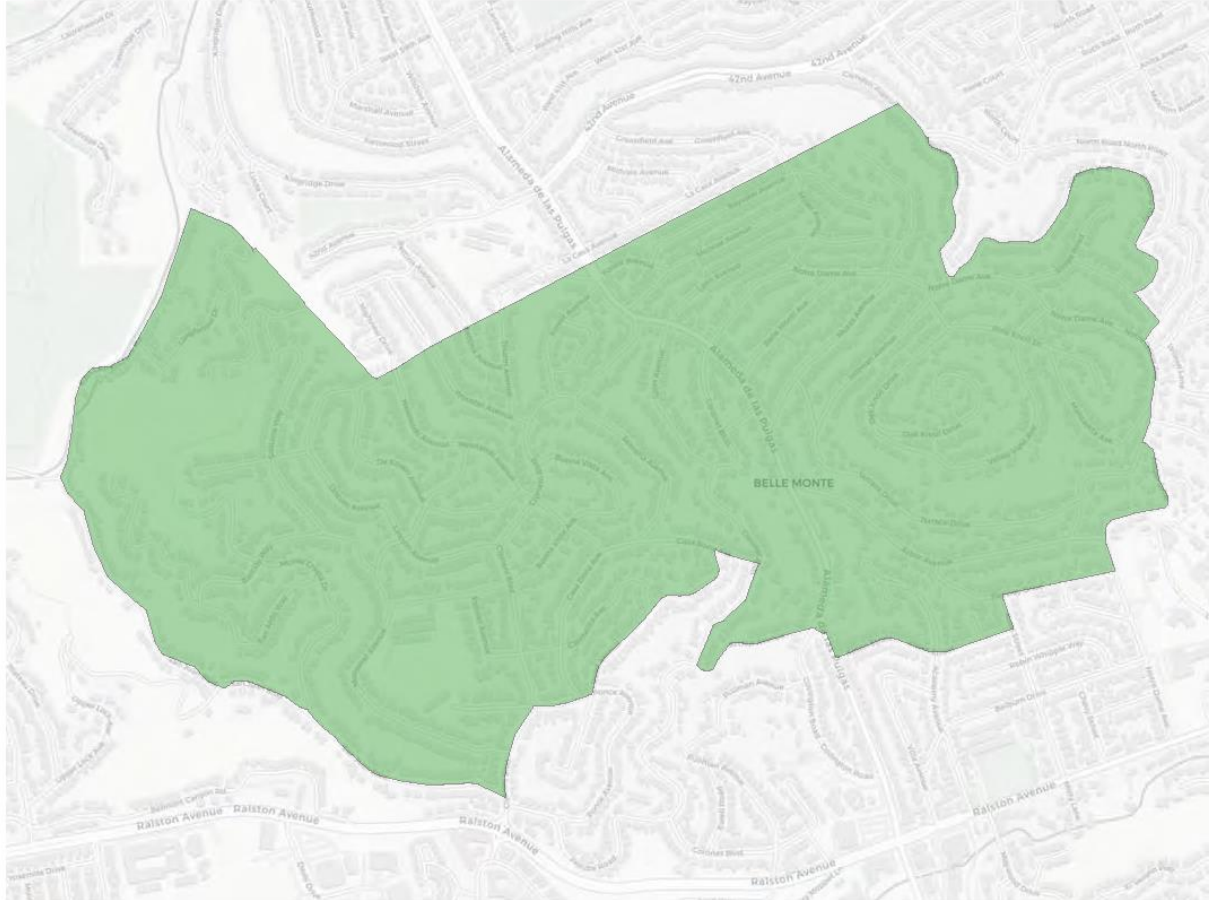


Citizen Voting Age Population

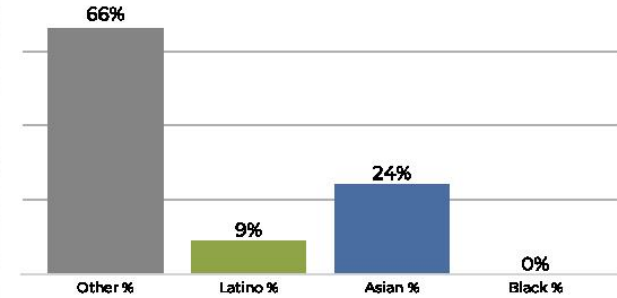


Population	Deviation	Deviation %	Other	Other %	Latino	Latino %	Asian	Asian %	Black	Black %
5,804	-14	-0.2%	3,291	56.7%	880	15.2%	1,576	27.2%	57	1.0%
Total CVAP	Other CVAP	Other CVAP %	Latino CVAP	Latino CVAP %	Asian CVAP	Asian CVAP %	Black CVAP	Black CVAP %		
3,796	2,607	68.7%	461	12.1%	705	18.6%	24	0.6%		

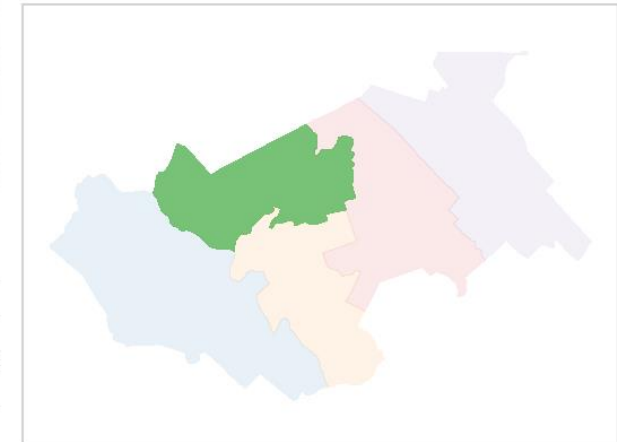
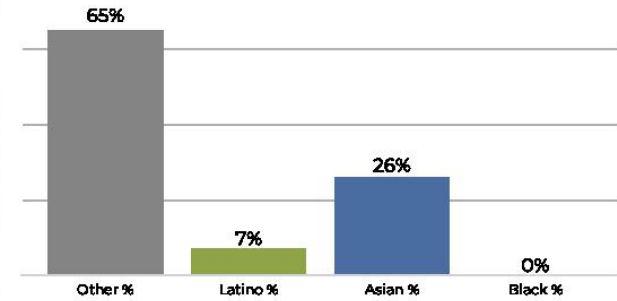
Division 3



2020 Census

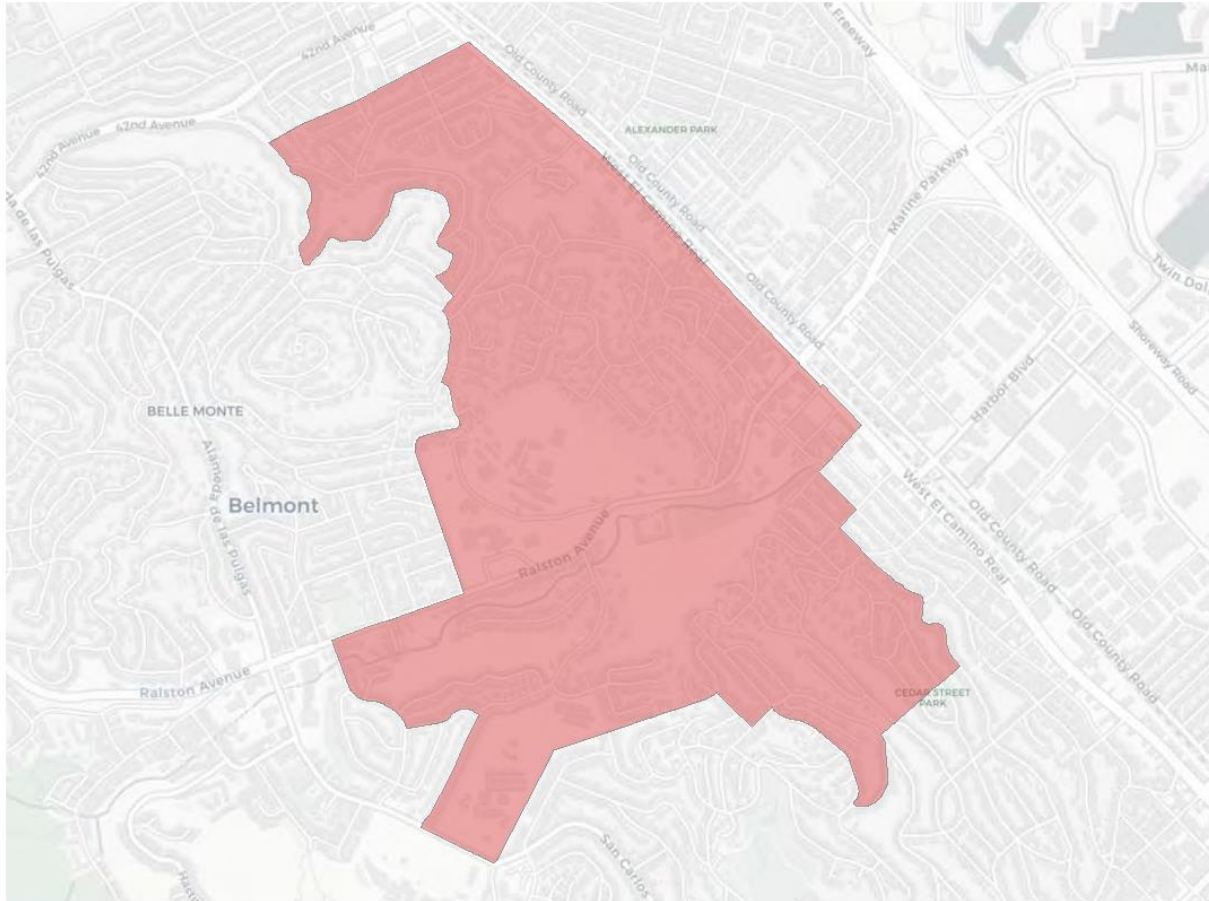


Citizen Voting Age Population

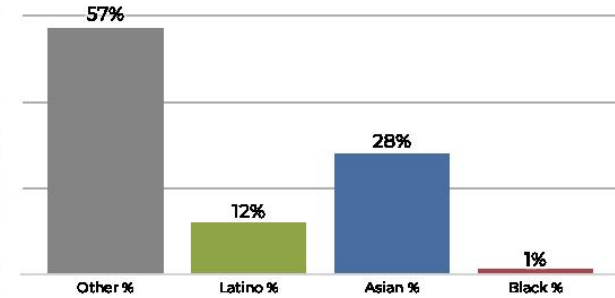


Population	Deviation	Deviation %	Other	Other %	Latino	Latino %	Asian	Asian %	Black	Black %
6,136	318	5.5%	4,052	66.0%	560	9.1%	1,482	24.2%	42	0.7%
Total CVAP	Other CVAP	Other CVAP %	Latino CVAP	Latino CVAP %	Asian CVAP	Asian CVAP %	Black CVAP	Black CVAP %		
3,971	2,618	65.9%	311	7.8%	1,031	26.0%	10	0.3%		

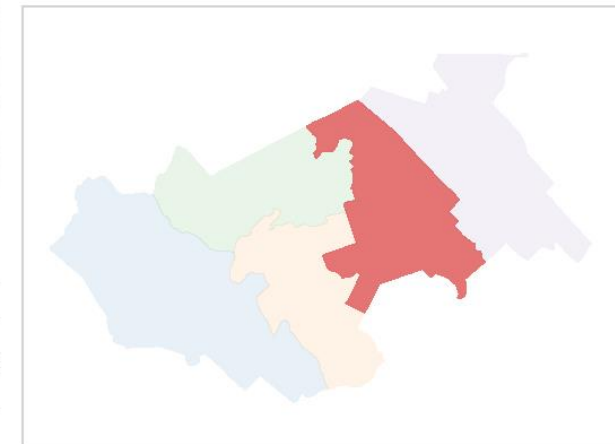
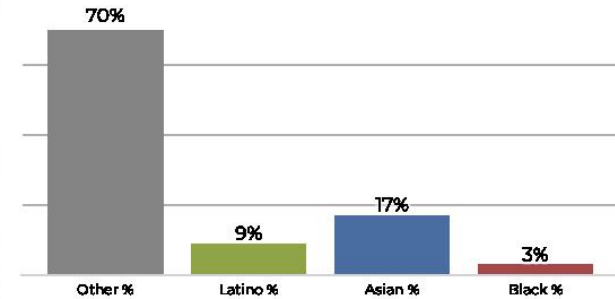
Division 4



2020 Census

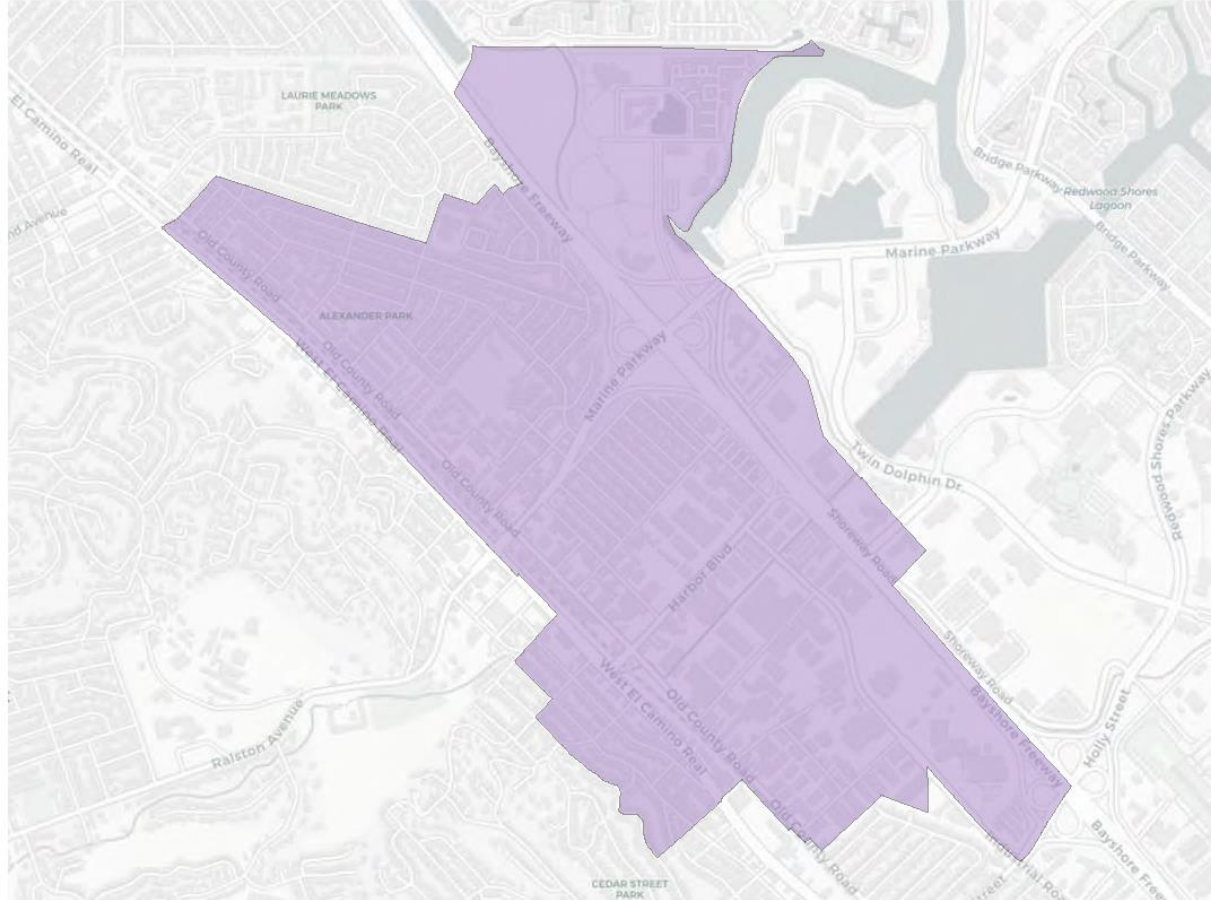


Citizen Voting Age Population

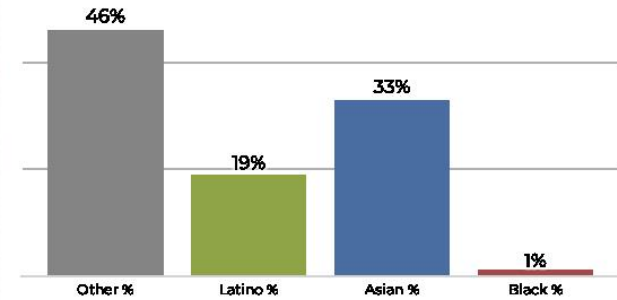


Population	Deviation	Deviation %	Other	Other %	Latino	Latino %	Asian	Asian %	Black	Black %
5,820	2	0.0%	3,319	57.0%	722	12.4%	1,680	28.9%	99	1.7%
Total CVAP	Other CVAP	Other CVAP %	Latino CVAP	Latino CVAP %	Asian CVAP	Asian CVAP %	Black CVAP	Black CVAP %		
3,717	2,626	70.7%	344	9.3%	634	17.1%	112	3.0%		

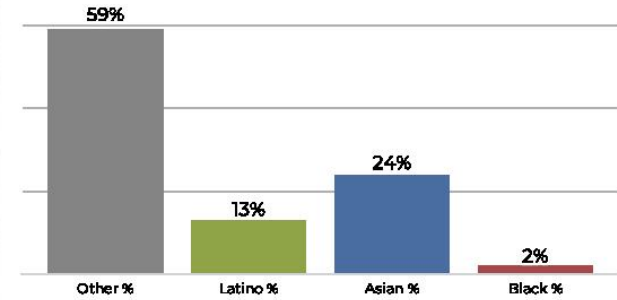
Division 5



2020 Census



Citizen Voting Age Population



Population	Deviation	Deviation %	Other	Other %	Latino	Latino %	Asian	Asian %	Black	Black %
5,730	-88	-1.5%	2,638	46.0%	1,089	19.0%	1,896	33.1%	107	1.9%
Total CVAP	Other CVAP	Other CVAP %	Latino CVAP	Latino CVAP %	Asian CVAP	Asian CVAP %	Black CVAP	Black CVAP %		
2,956	1,758	59.5%	390	13.2%	732	24.8%	76	2.6%		

