

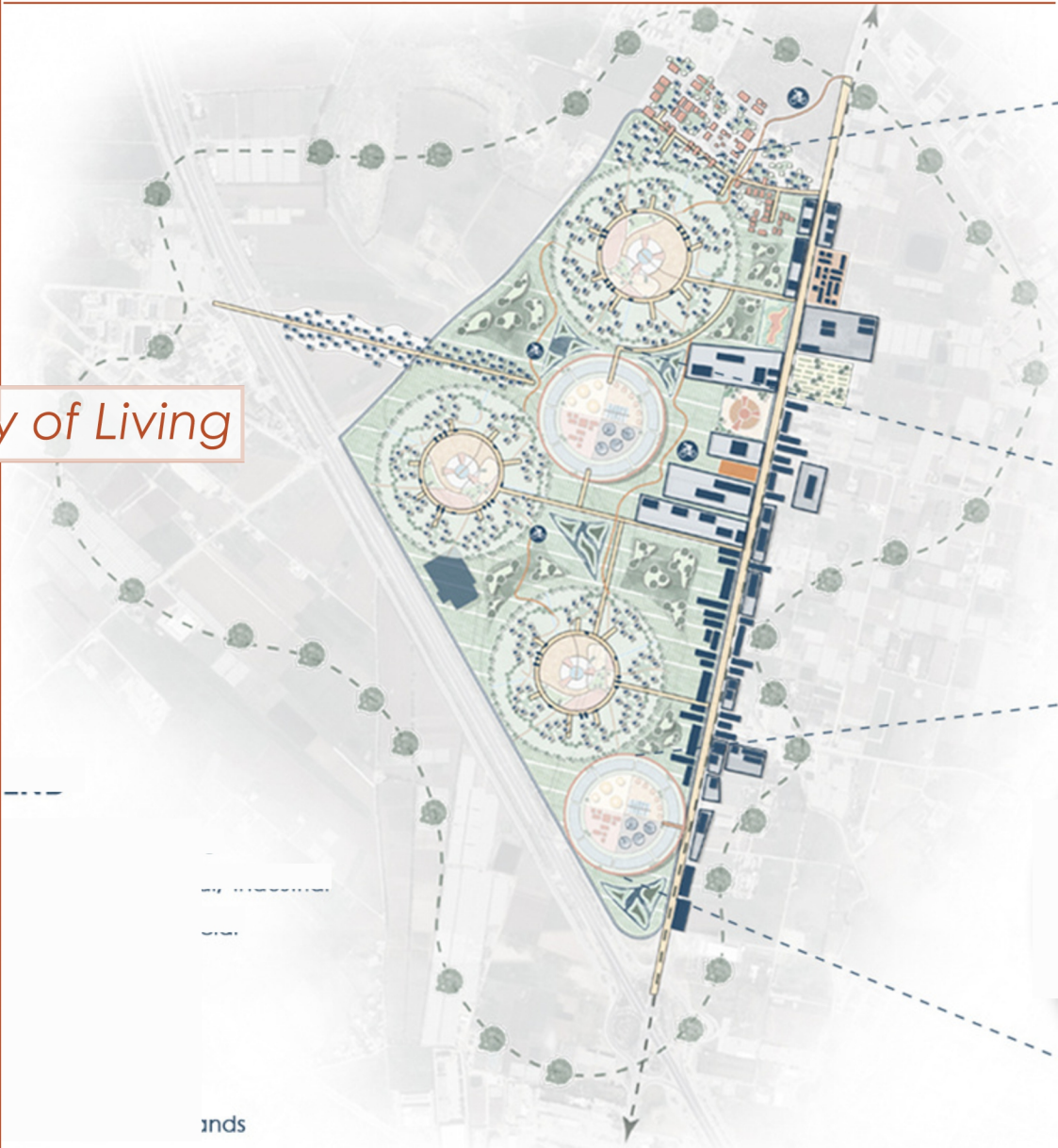
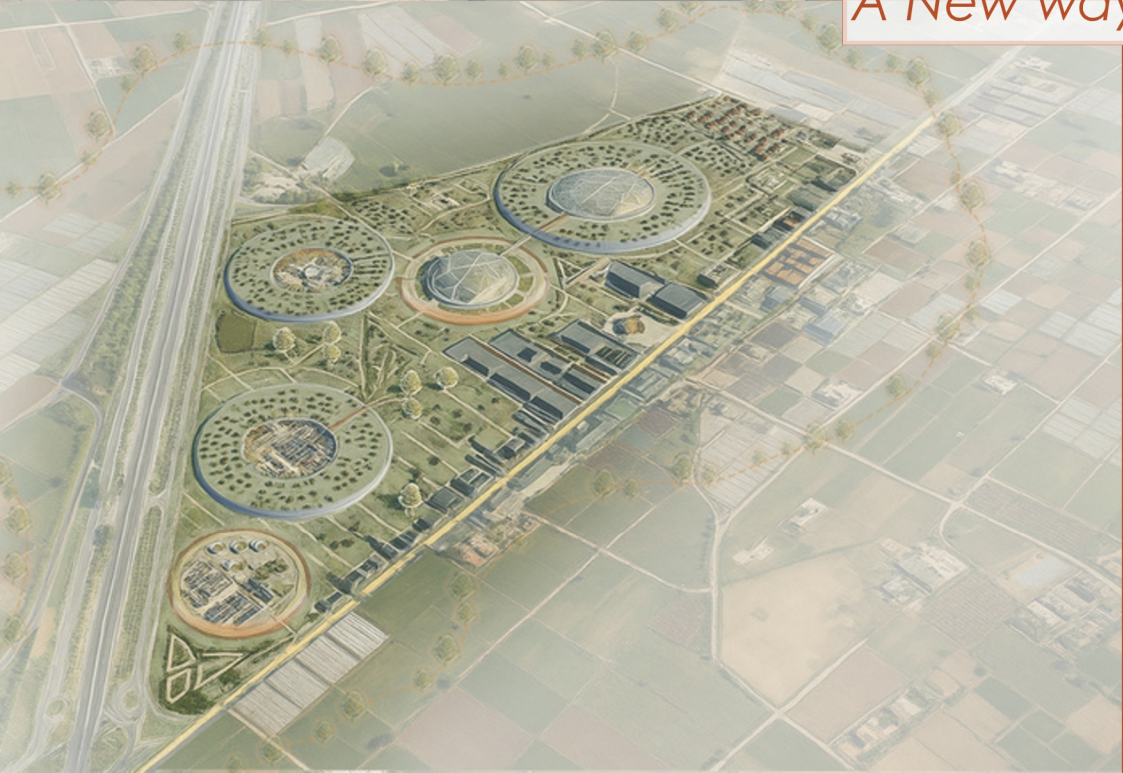


Amman Souther Gate

CircuLife

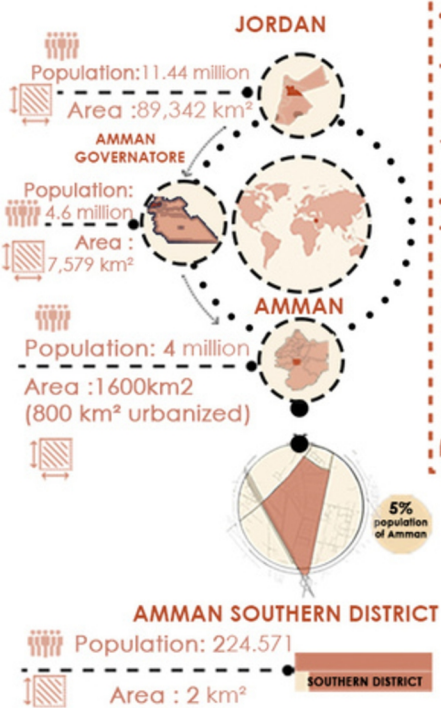
Smart Sustainable Neighbourhood

A New way of Living



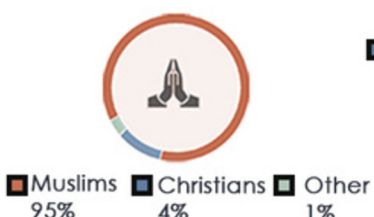
Context analysis// Amman

Working Area Location



Demographic Analysis

Religion Distribution



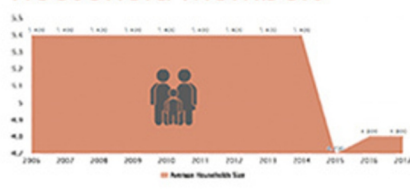
Gender Distribution



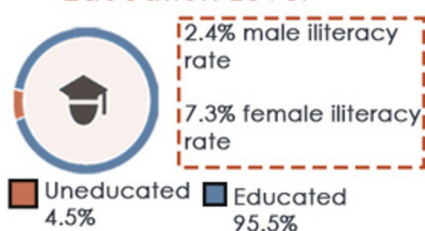
Age Groups



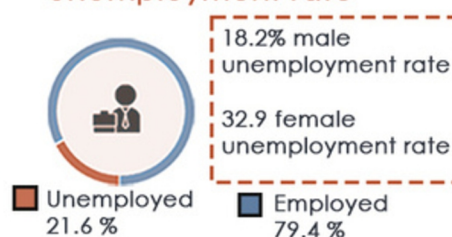
Household Members



Education Level



Unemployment rate



Average Temperature



Precipitation & Humidity



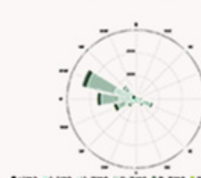
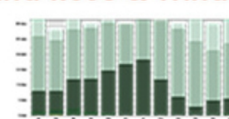
Average daily sun hours



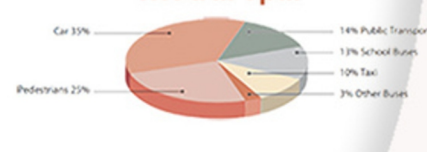
Solar Radiation Intensity



Wind Rose & Wind Speed



Modal Split



Al - Mahatta 1987

After the war in 1948, the city expanded further and the city of Amman became the capital city

1948 (Amman Municipality)

Basman street in Amman

Third Roundabout 1970s

Amman downtown 1978

Amman - Abdali and Shmeisani

TYCHE HOTEL - JORDAN
The first Municipal Council of Amman was established when the population of Amman was about 200 families or about 2,000 residents.

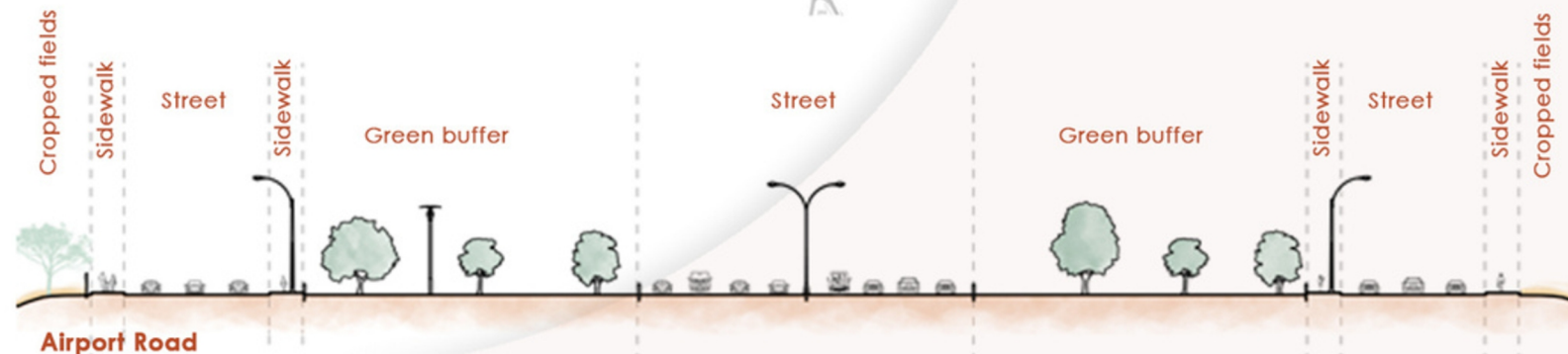
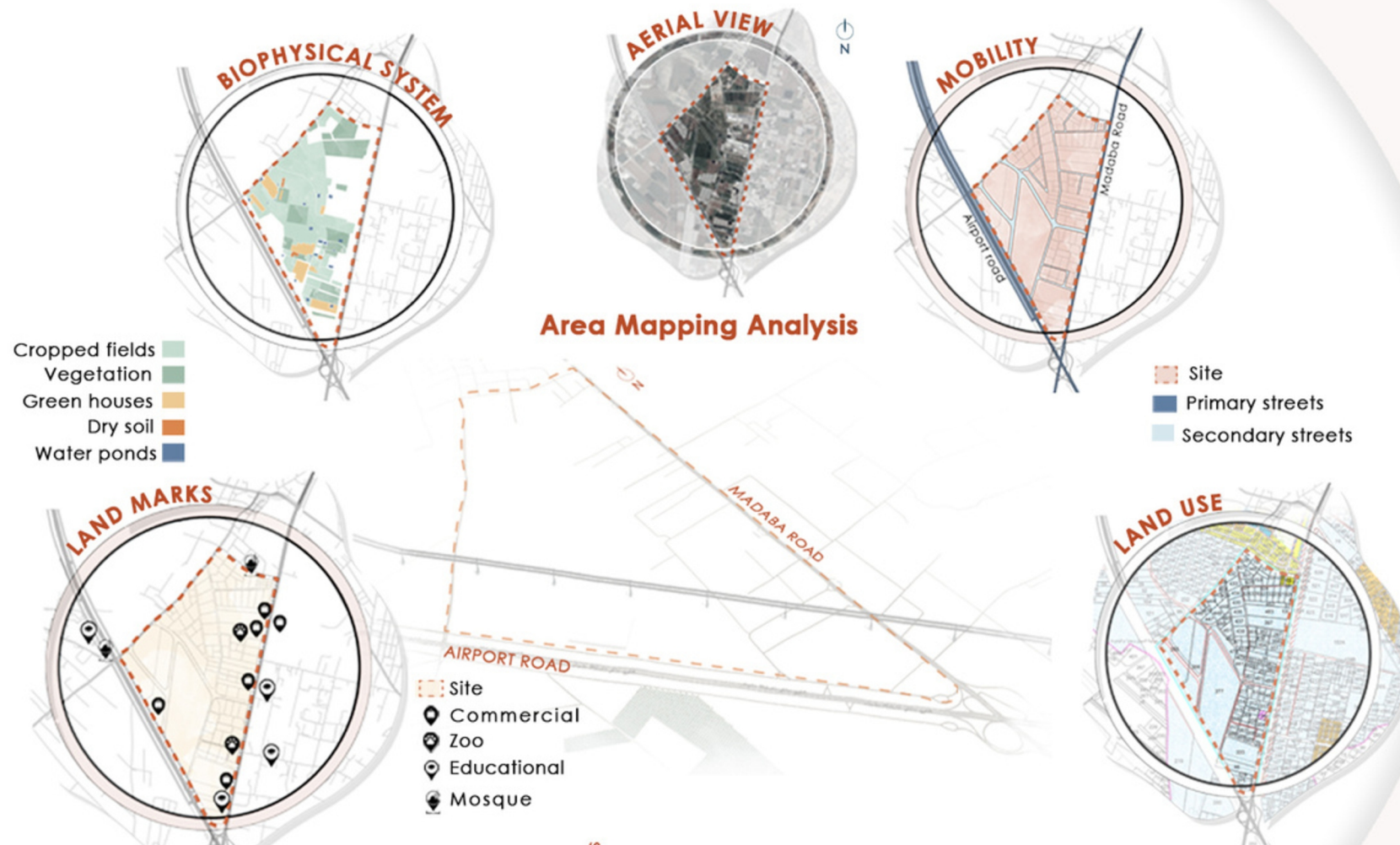


Context analysis// Amman.

ECONOMIC AND SOCIAL CHALLENGES

-Amman, the capital of Jordan, faces **rapid urbanization, population growth**, and increasing pressure on its **infrastructure**. The city's economy is driven by **services, tourism, and trade**, but **high unemployment** and **rising living costs** pose challenges.

-The city most critical concerns are unplanned **urban expansion**, inefficient **public transport**, limited **green spaces**, and **aging infrastructure**, inadequate **wastewater management** and **social inequalities**.



Strategic framework & program layout

Considering **Amman's** growing population and its unique location in an extreme climate, we **envision the capital** as a **resilient** and **regenerative city**. In the given site, we propose a **circular urban model**, accommodating the growing population into a **self-sustainable community**.

This proposal introduces a **multi-functional program** that is built based on the existing infrastructure, landscape features, and functional traces, integrating **housing**, **productive landscapes**, **clean energy**, and **community infrastructure** into a **cohesive circular system**.

Designed to meet the **diverse needs of residents** -both present and future—the program distributes land use across **residential zones**, **agri-solar fields**, **livestock farming**, and **public spaces**.

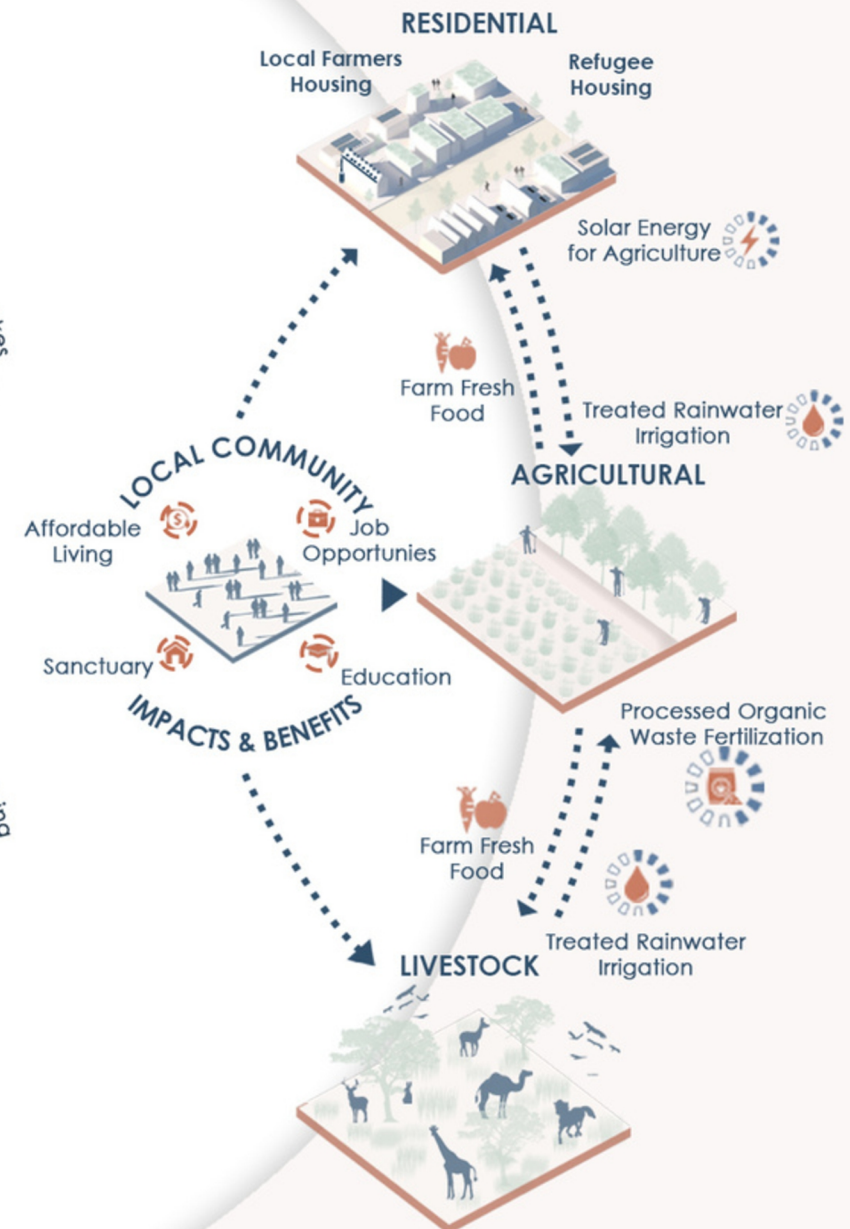
This project goes beyond resource management; it focuses on **community empowerment** by creating spaces that encourage **connection** and **collaboration**.



Concept// Circular city

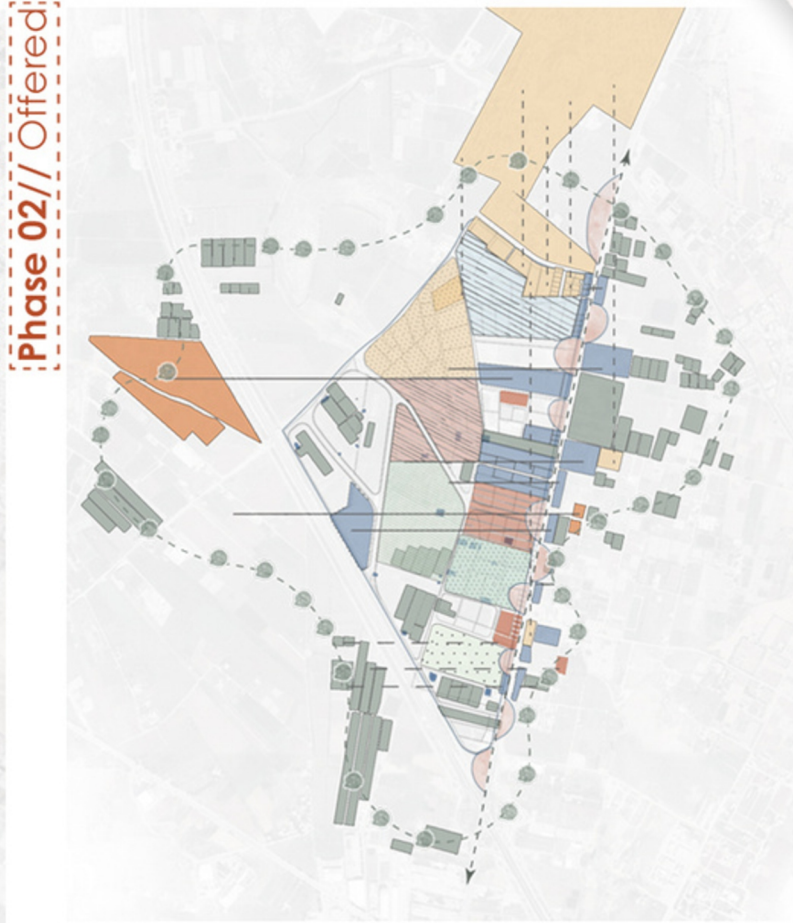
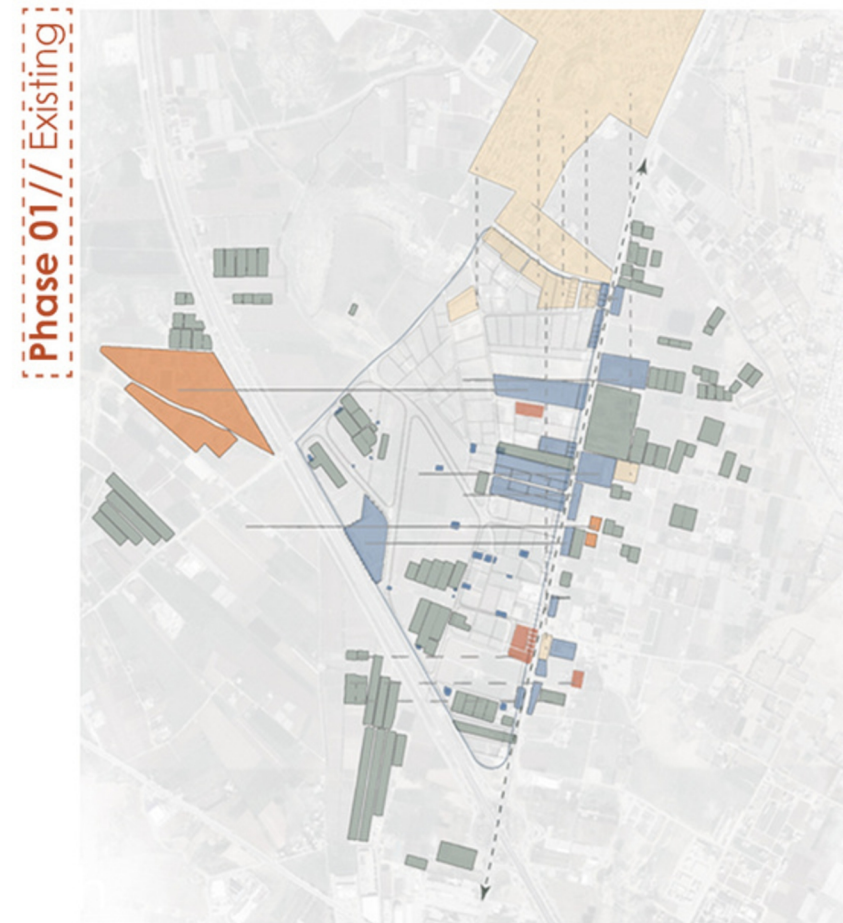


Symbiotic Urban Ecosystem



Master plan - phases

SPACE FLOW TRANSFORMATION



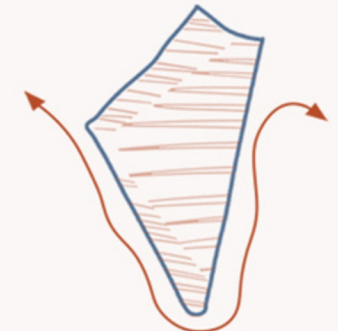
LEGEND

- Educational
- Commercial
- Residential
- Green houses
- Farms

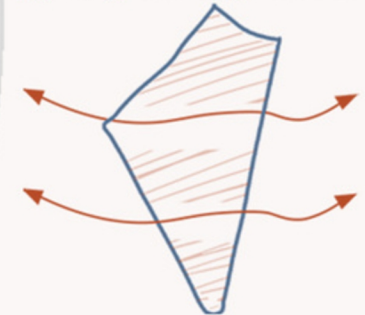
LEGEND

- Student housing
- Farmers housing
- Mixed use
- Residential + farms
- Local markets + farms
- Solar plants
- Educational
- Main street supportive functions
- Green corridor

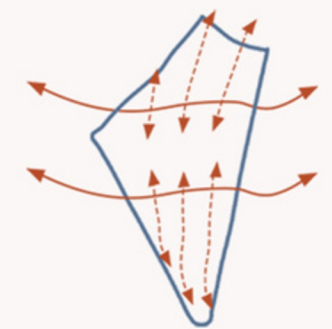
Present avoidance of the area



Creating a passage
-The City
(going through the area)

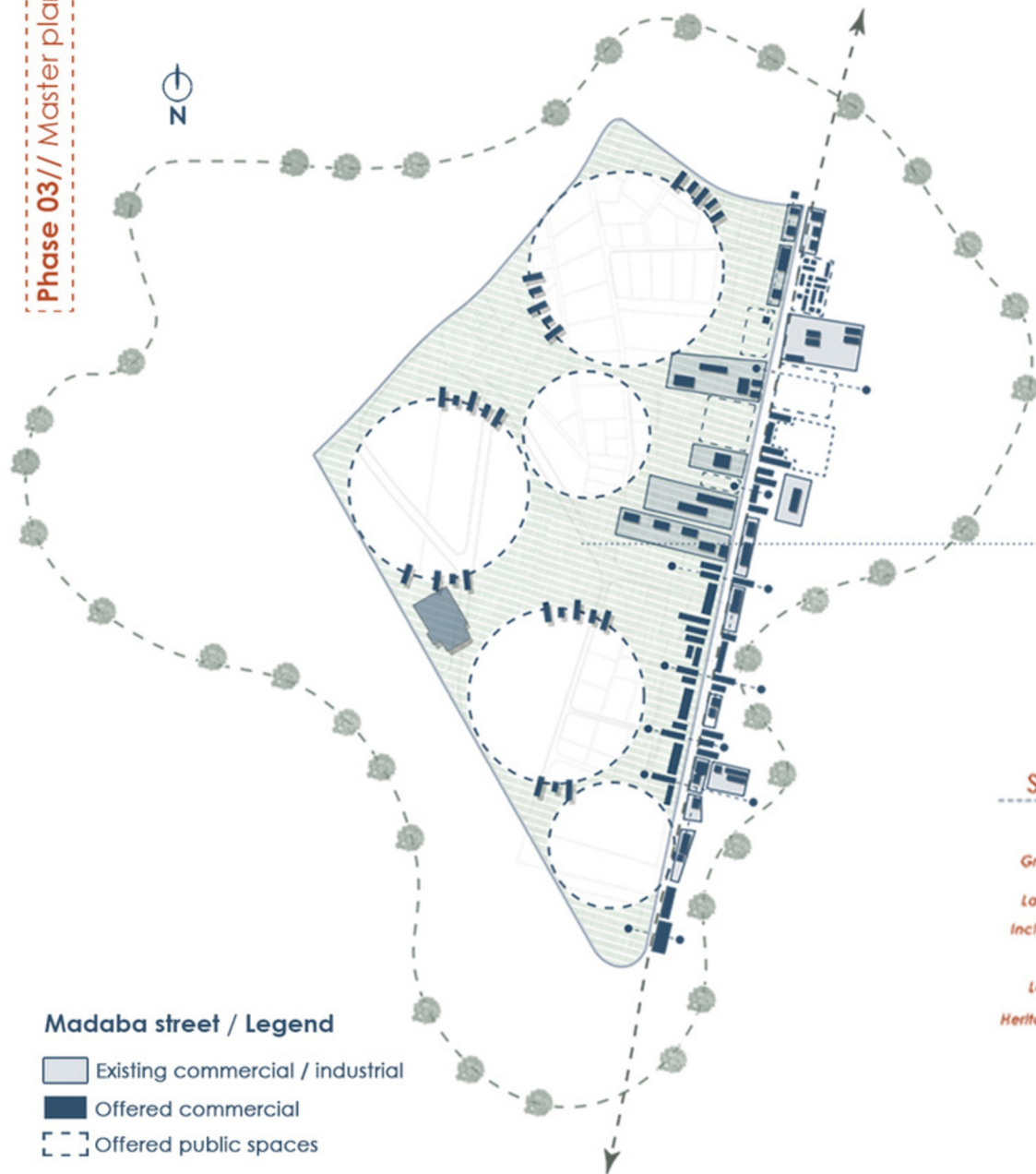


Inner connection & activities
(staying in the area)



Master plan - phases

Phase 03/// Master plan



Project approach// Resilient Urban Model

Foundation strategies

- Closed-Loop Resourcing
- Inclusive Community Spaces
- Green & Blue Infrastructure
- Local Materials Utilization

Sustainable Development goals

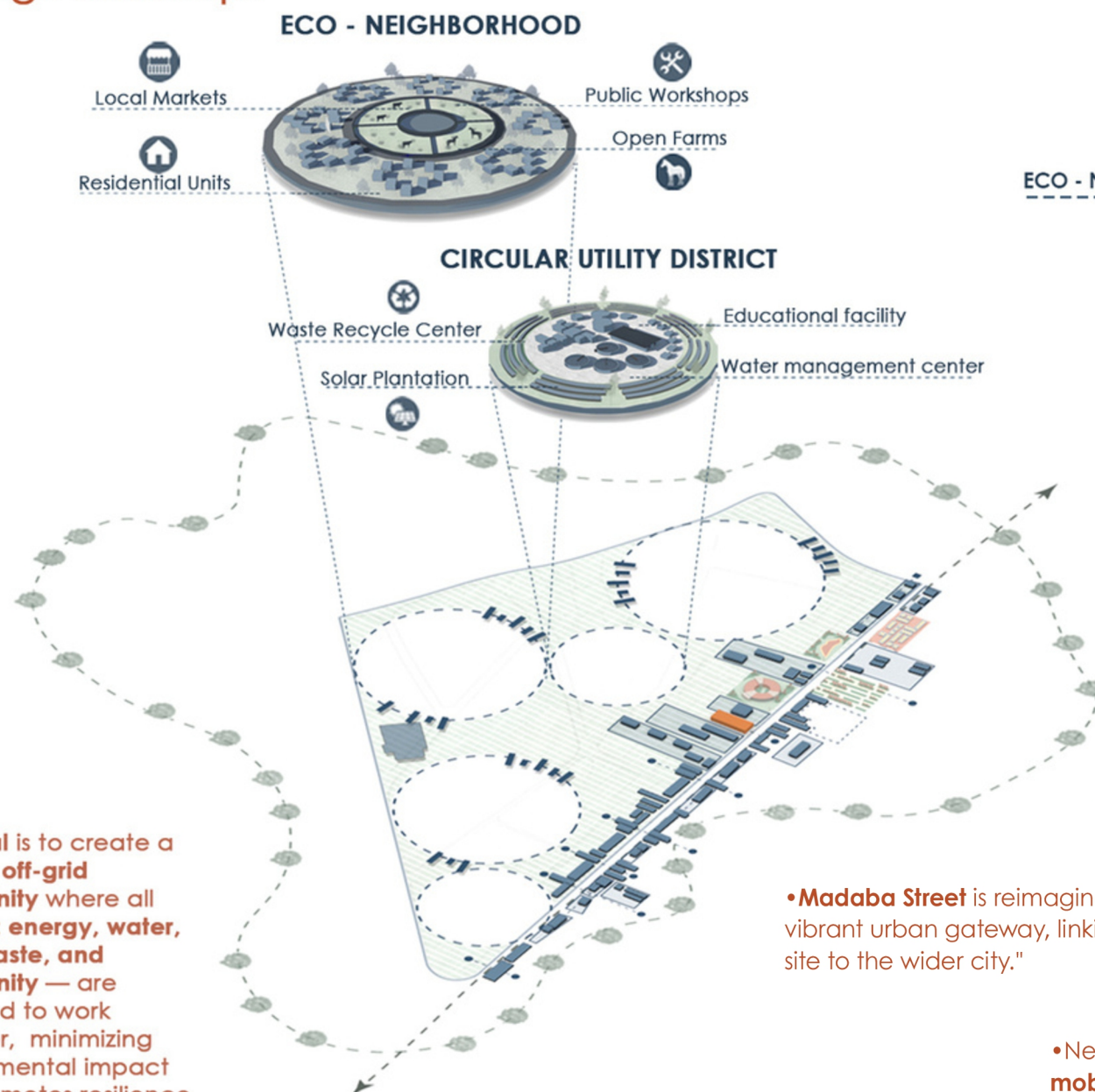
- Eco-Neighbourhood**
 - Responsible Consumption
 - Sustainable City & Community
 - Good Health & Well Being
 - Innovation & Infrastructure
 - Gender Equality
 - Reduced Inequalities
- Farming & Agriculture**
 - No Poverty
 - Zero Hunger
 - Economic Growth
 - Life on Land
- Regenerative Utility District**
 - Clean Water
 - Innovation & Infrastructure
 - Quality Education
 - Affordable & Clean Energy



Integrated Solutions



Circular vision & Design concept



Project approach// Resilient Urban Model



ECO - NEIGHBORHOOD

MIXED-USE
PUBLIC SPACE

SUSTAINABLE
RESOURCING DISTRICT

LOCAL FARMING

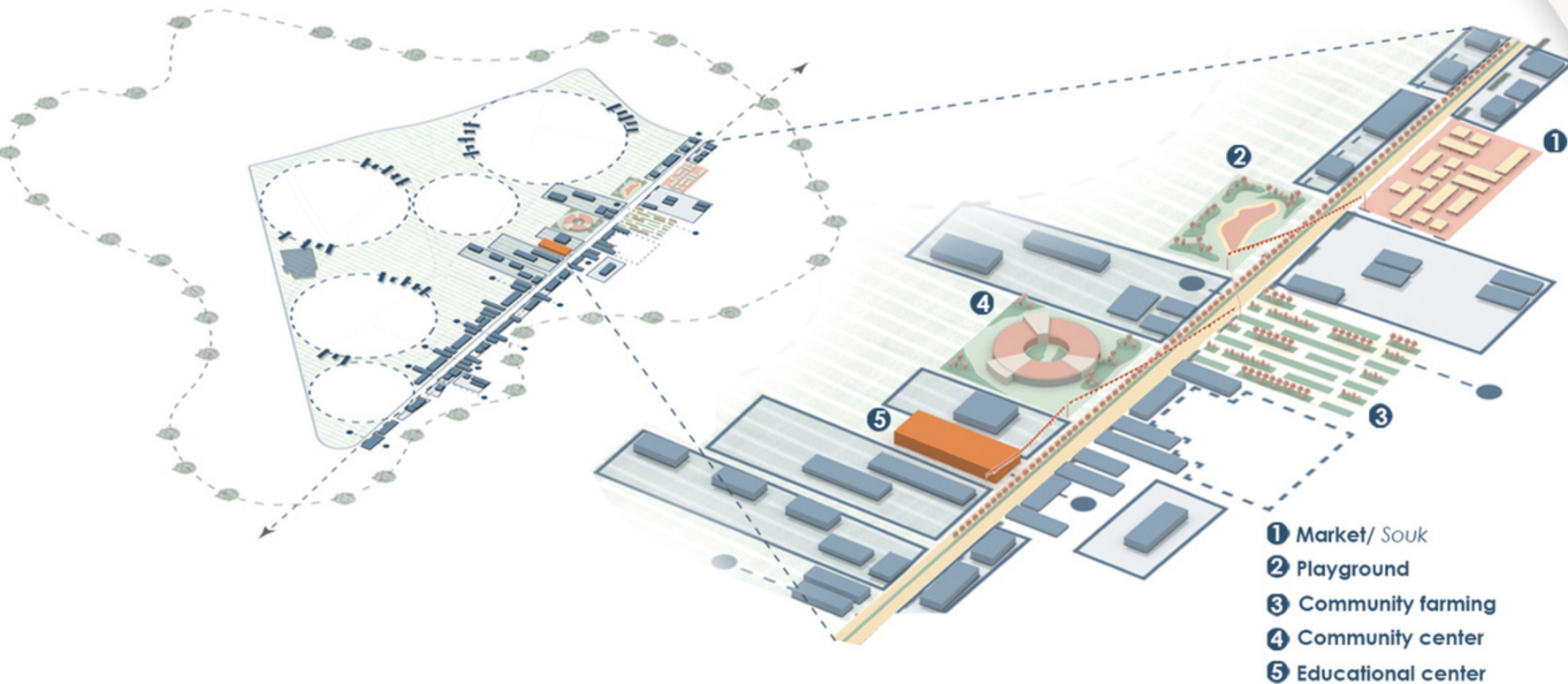
• **Madaba Street** is reimagined as a vibrant urban gateway, linking the site to the wider city."

• **Preserving** existing infrastructure, surrounding fields and natural landscape

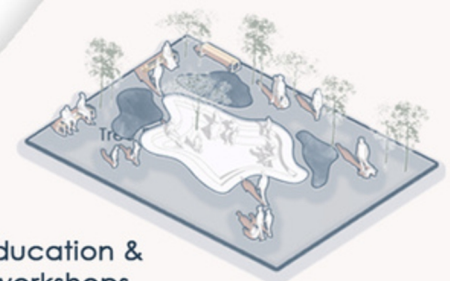
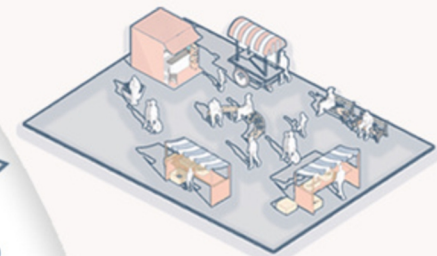
• New **community spaces** and an **eco-mobility network** strengthen connections within and beyond the neighbourhood.

Our goal is to create a vibrant, off-grid community where all systems: **energy, water, food, waste, and community** — are designed to work together, minimizing environmental impact and promotes resilience and self-sufficiency

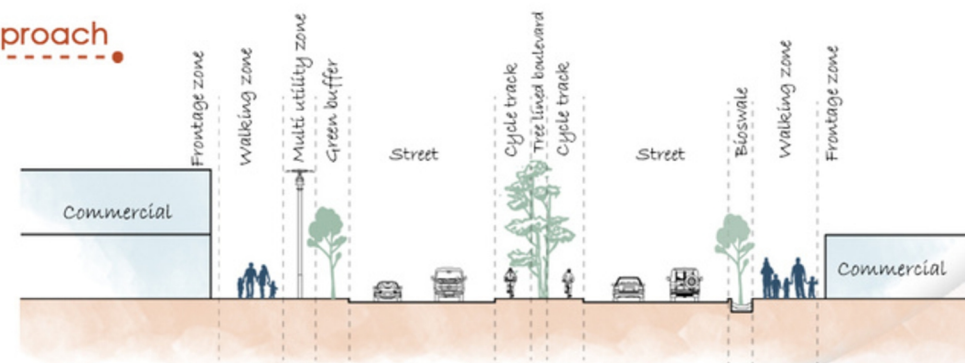
Circular vision & Design concept



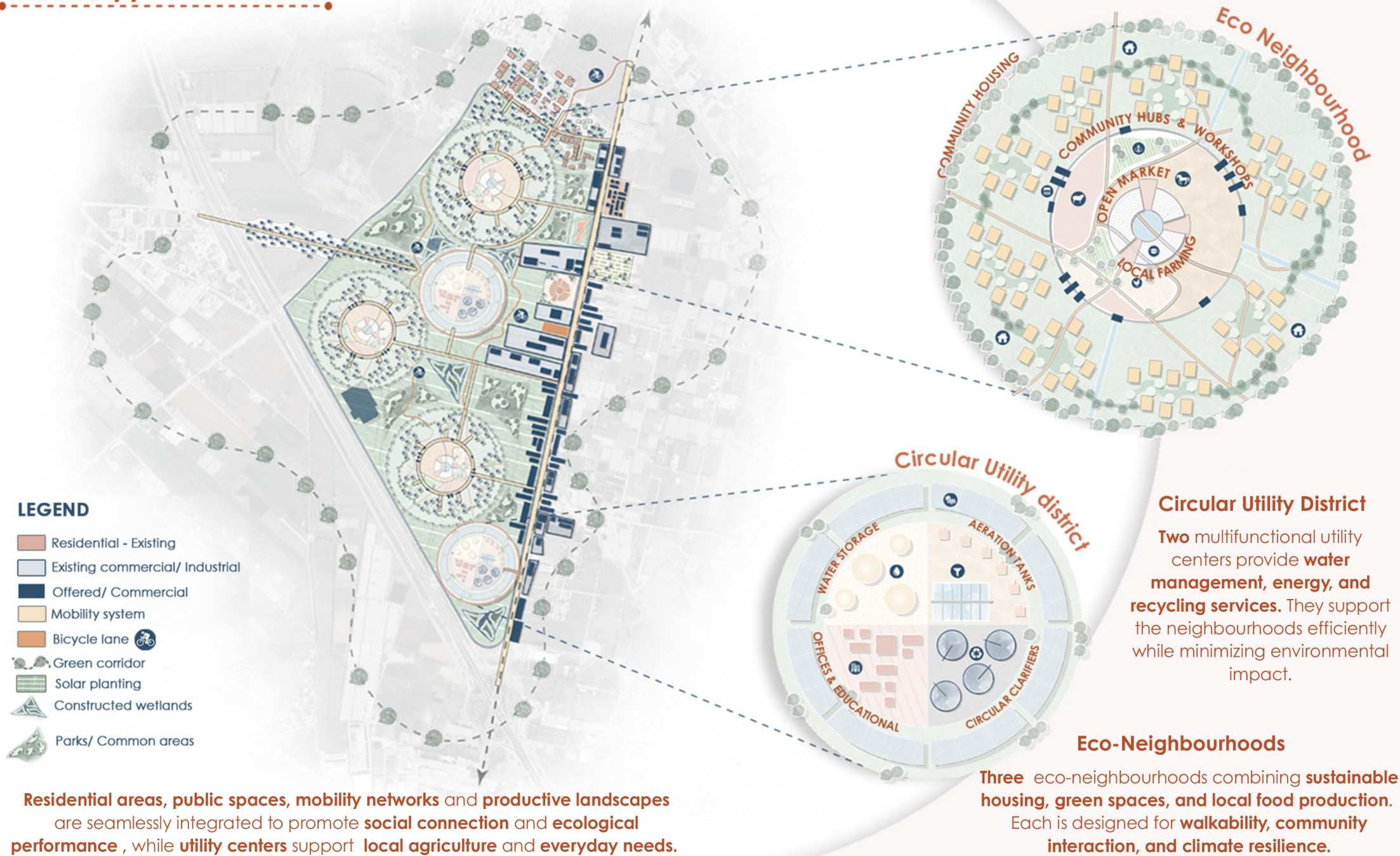
MIXED-USE SPACES Community Centered Activities



Madaba street// Healthy street approach

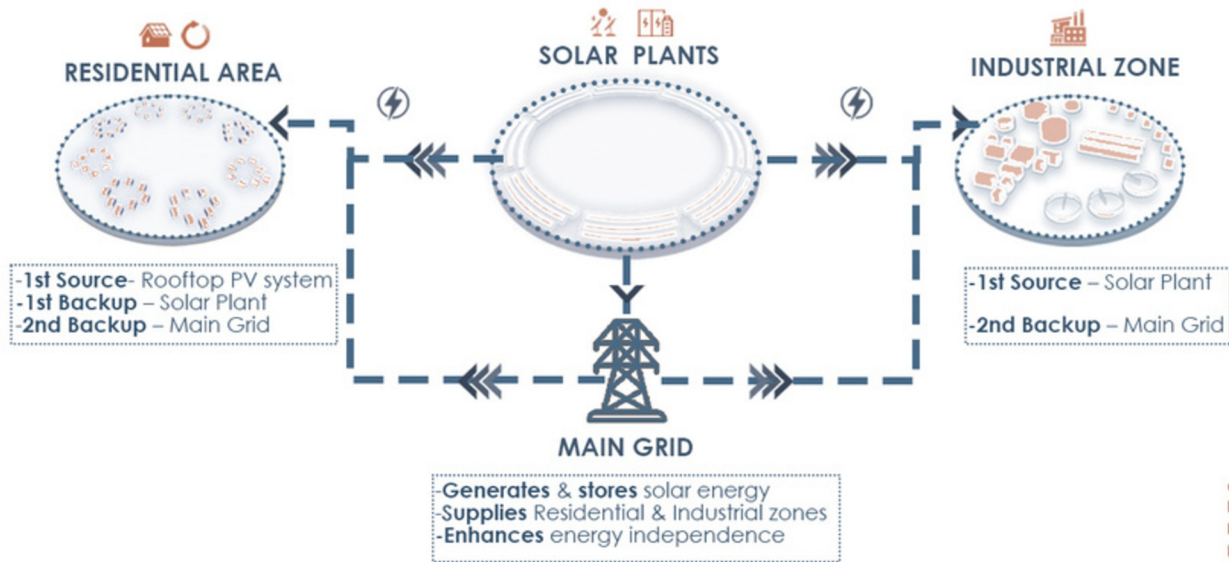


Vision// CircuLife.



Vision// Systems.

ON-GRID PV SOLAR ENERGY HYBRID SUPPLY SYSTEM

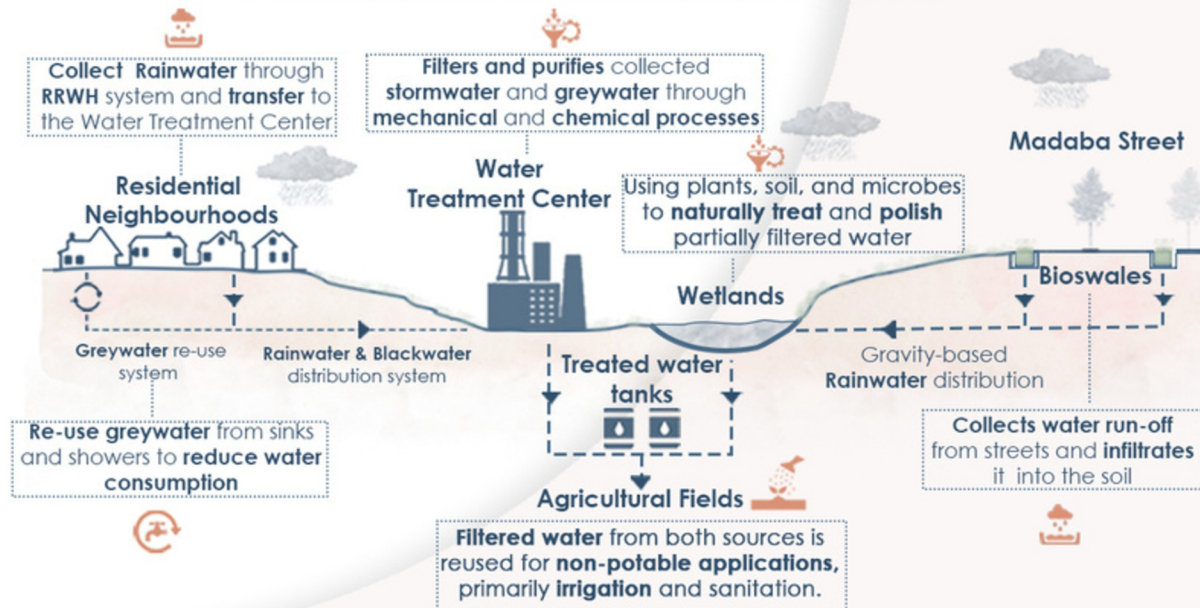


Hybrid solar energy system that combines **centralized** and **decentralized** generation for efficiency and resilience.

Two solar plants are connected to the main grid to power **public infrastructure** and **utility hubs**, while **rooftop PV panels** on every residential building provide localized, independent energy.

CIRCULAR WATER SYSTEM

Harvesting, Treatment & Reuse Flow System



Centralized water reuse system designed to reduce freshwater demand and close the urban water loop.

Blackwater and rainwater are collected, treated at two utility hubs, and reused for **irrigation, landscape maintenance, and non-potable applications** across the area.

Greywater is treated locally, by **independent systems** in the residential area.

Vision// Details

